

# DATA SHEET

## Three Phase Induction Motor - Squirrel Cage



Customer :

Product line : Standard Efficiency Three-Phase Product code : 13997247

Frame	: 56C	Cooling method	: IC01 - ODP
Insulation class	: F	Mounting	: F-1
Duty cycle	: Cont.(S1)	Rotation <sup>1</sup>	: Both (CW and CCW)
Ambient temperature	: -20°C to +40°C	Starting method	: Direct On Line
Altitude	: 1000 m.a.s.l.	Approx. weight <sup>3</sup>	: 7.4 kg
		Moment of inertia (J)	: 0.0016 kgm <sup>2</sup>

Output [HP]	0.25	0.25	0.25
Poles	4	4	4
Frequency [Hz]	60	50	50
Rated voltage [V]	208-230/460	190/380	220/415
Rated current [A]	1.26-1.14/0.571	1.18/0.589	1.20/0.636
L. R. Amperes [A]	7.45-6.74/3.37	5.89/2.94	6.12/3.24
LRC [A]	5.9x(Code M)	5.0x(Code J)	5.1x(Code L)
No load current [A]	0.864-1.00/0.501	0.976/0.488	1.11/0.589
Rated speed [RPM]	1760	1450	1460
Slip [%]	2.22	3.33	2.67
Rated torque [kgfm]	0.103	0.125	0.124
Locked rotor torque [%]	229	190	229
Breakdown torque [%]	350	260	320
Service factor		1.15	1.15
Temperature rise	80 K	80 K	80 K
Locked rotor time	59s (cold) 33s (hot)	77s (cold) 43s (hot)	61s (cold) 34s (hot)
Noise level <sup>2</sup>	52.0 dB(A)	49.0 dB(A)	49.0 dB(A)
Efficiency (%)	25%		
	50%	55.0	50.8
	75%	62.0	59.7
	100%	66.0	64.5
Power Factor	25%		
	50%	0.41	0.42
	75%	0.51	0.52
	100%	0.60	0.61

Bearing type	: Drive end	Non drive end	Foundation loads
	: 6203 ZZ	6202 ZZ	
Sealing	: Without	Without	Max. traction : 9 kgf
	: Bearing Seal	Bearing Seal	
Lubrication interval	: -	-	Max. compression : 16 kgf
Lubricant amount	: -	-	
Lubricant type	: Mobil Polyrex EM		

Notes  
USABLE @208V SF 1.00

This revision replaces and cancel the previous one, which must be eliminated.  
(1) Looking the motor from the shaft end.  
(2) Measured at 1m and with tolerance of +3dB(A).  
(3) Approximate weight subject to changes after manufacturing process.  
(4) At 100% of full load.

These are average values based on tests with sinusoidal power supply, subject to the tolerances stipulated in NEMA MG-1.

Rev.	Changes Summary	Performed	Checked	Date
Performed by				
Checked by				
Date	17/05/2022			

Page 1 / 4  
Revision

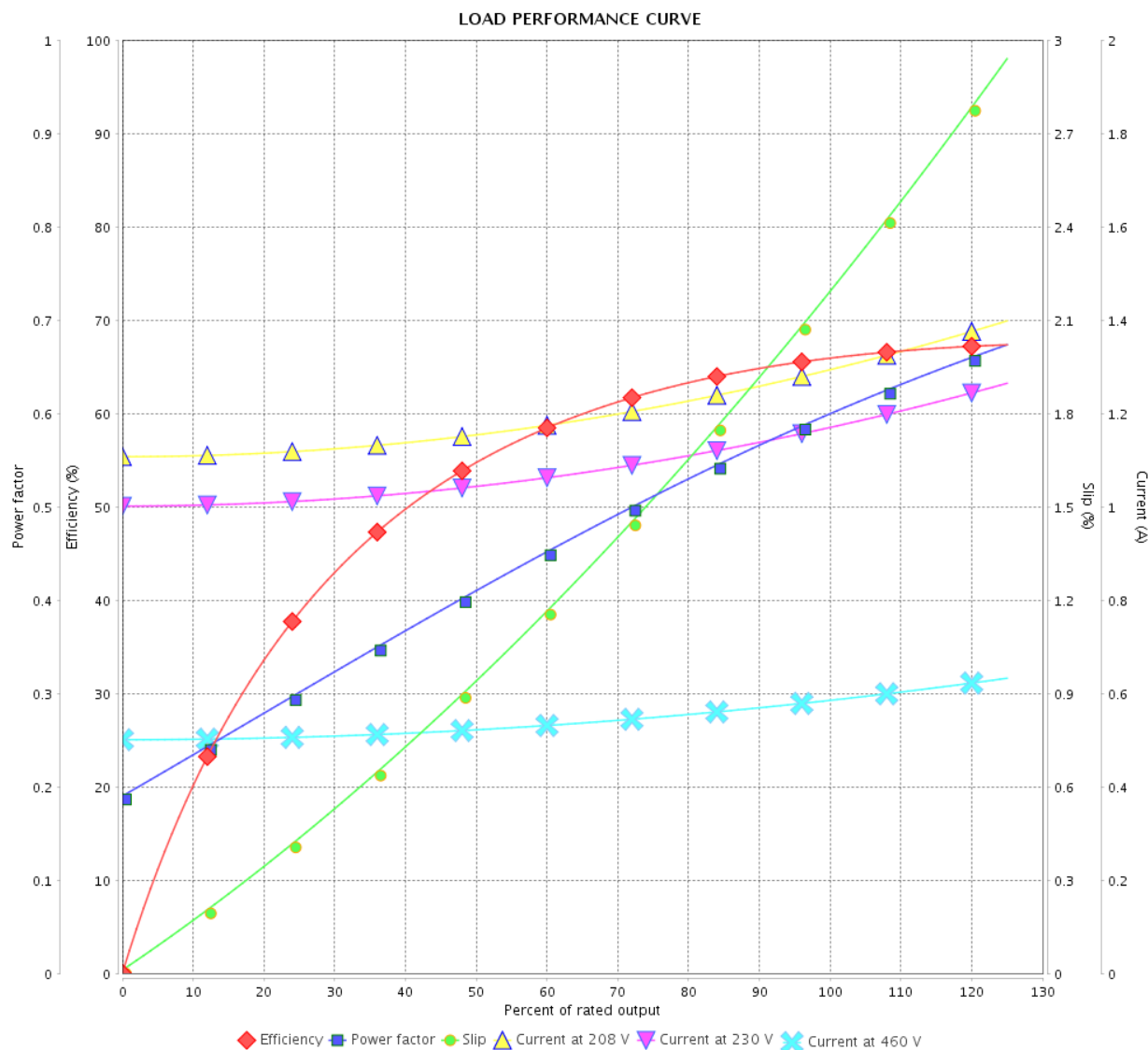
# LOAD PERFORMANCE CURVE

Three Phase Induction Motor - Squirrel Cage



Customer :

Product line : Standard Efficiency Three-Phase Product code : 13997247



Performance : 208-230/460 V 60 Hz 4P

Rated current : 1.26-1.14/0.571 A  
 LRC : 5.9  
 Rated torque : 0.103 kgfm  
 Locked rotor torque : 229 %  
 Breakdown torque : 350 %  
 Rated speed : 1760 rpm

Moment of inertia (J) : 0.0016 kgm<sup>2</sup>  
 Duty cycle : Cont.(S1)  
 Insulation class : F  
 Service factor :  
 Temperature rise : 80 K

Rev.	Changes Summary		Performed	Checked	Date
Performed by				Page 2 / 4	Revision
Checked by					
Date	17/05/2022				

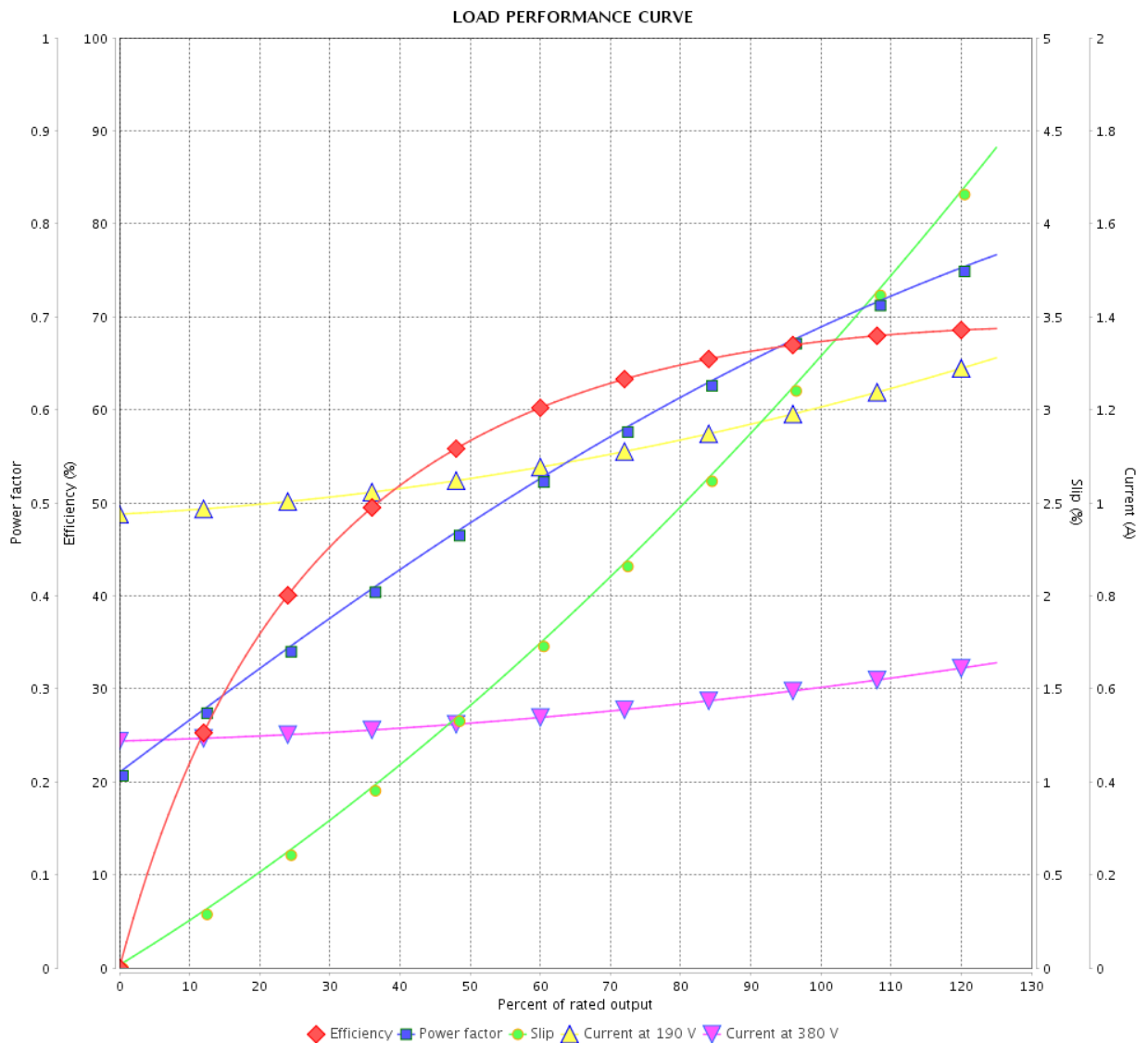
# LOAD PERFORMANCE CURVE

## Three Phase Induction Motor - Squirrel Cage



Customer :

Product line : Standard Efficiency Three-Phase Product code : 13997247



Performance : 190/380 V 50 Hz 4P

Rated current : 1.18/0.589 A  
 LRC : 5.0  
 Rated torque : 0.125 kgfm  
 Locked rotor torque : 190 %  
 Breakdown torque : 260 %  
 Rated speed : 1450 rpm

Moment of inertia (J) : 0.0016 kgm<sup>2</sup>  
 Duty cycle : Cont.(S1)  
 Insulation class : F  
 Service factor : 1.15  
 Temperature rise : 80 K

Rev.	Changes Summary	Performed	Checked	Date
Performed by		Page 3 / 4Revision		
Checked by				
Date	17/05/2022			

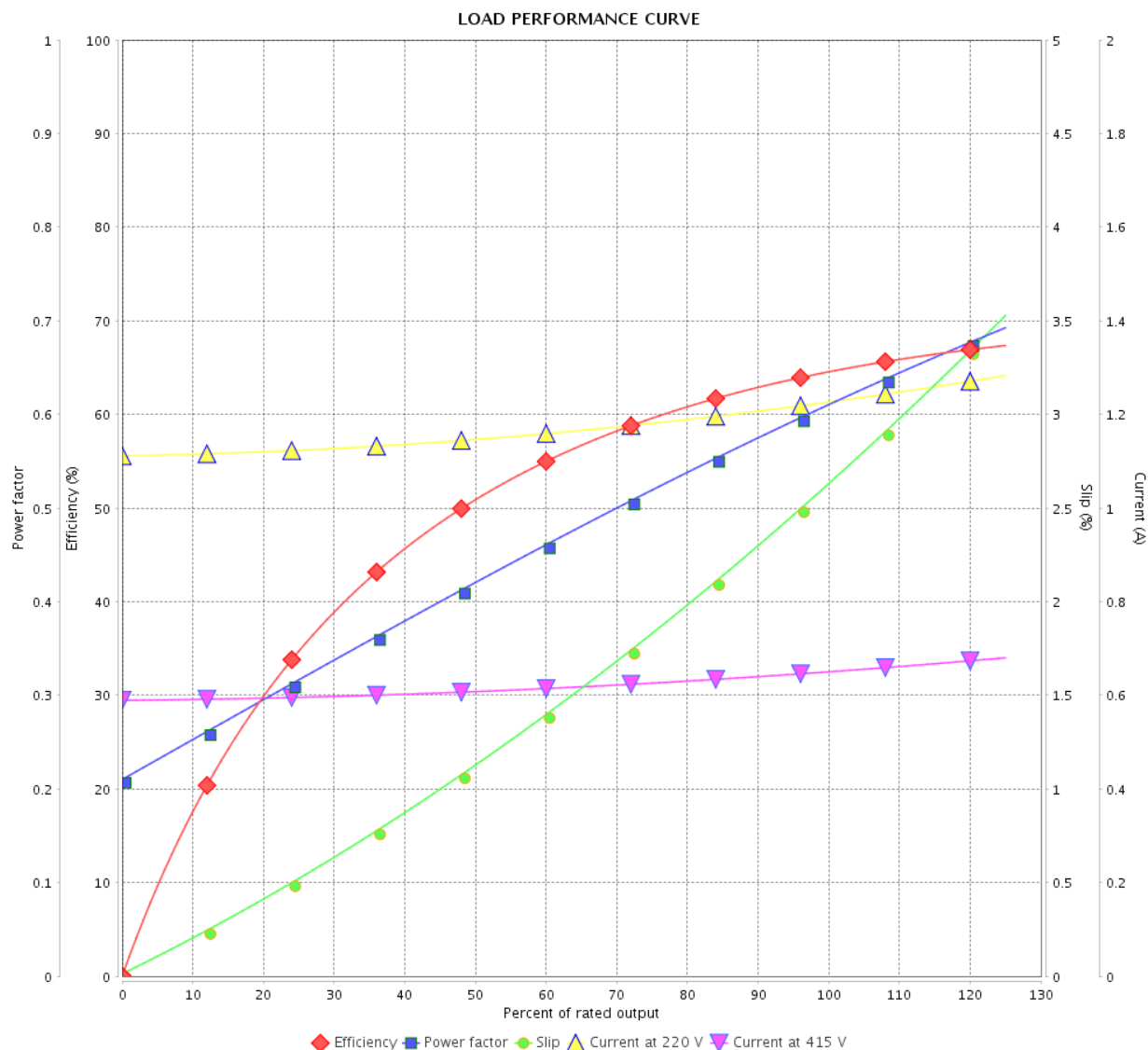
# LOAD PERFORMANCE CURVE

Three Phase Induction Motor - Squirrel Cage



Customer :

Product line : Standard Efficiency Three-Phase Product code : 13997247

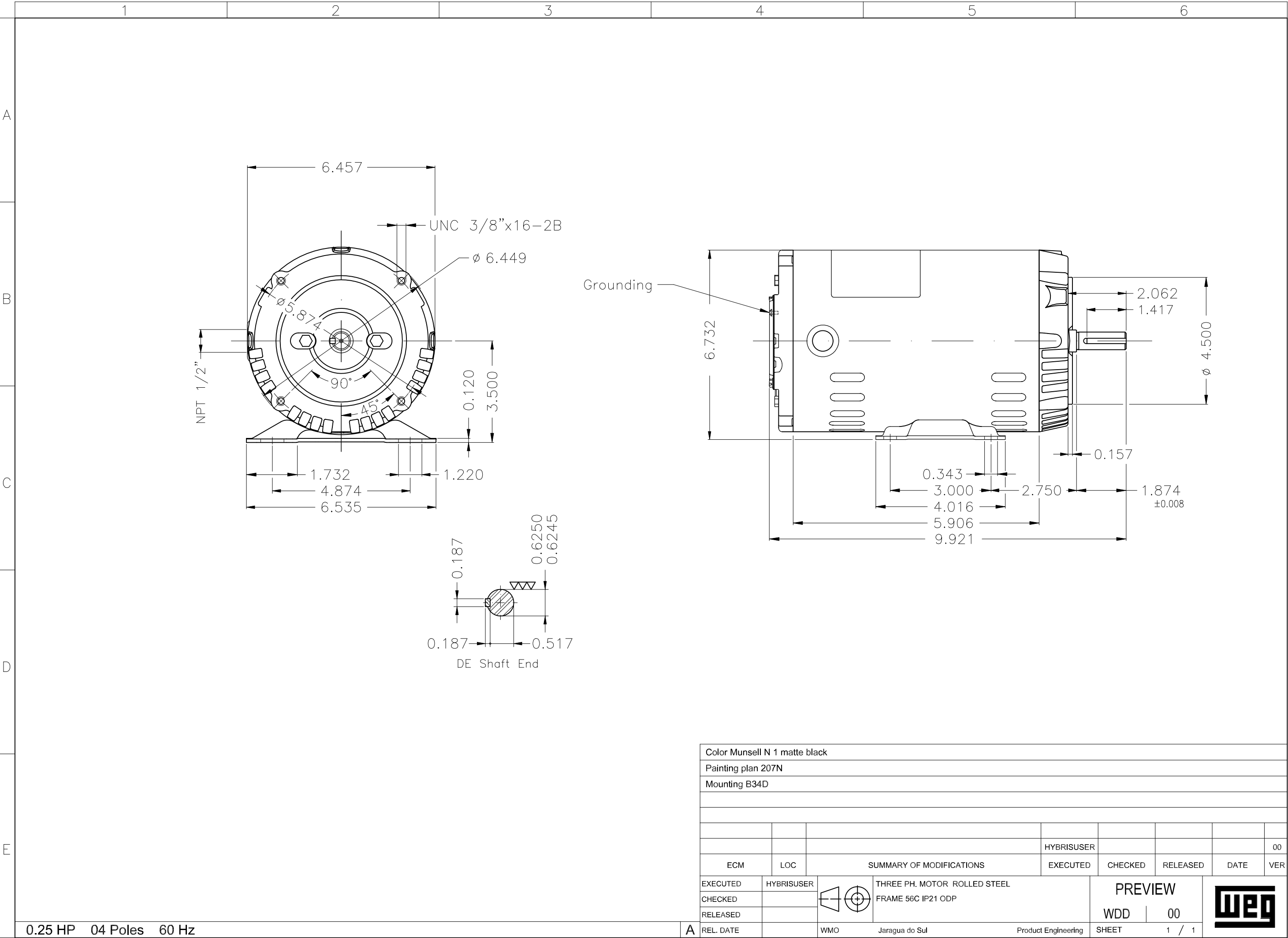


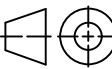

Performance : 220/415 V 50 Hz 4P

Rated current : 1.20/0.636 A  
 LRC : 5.1  
 Rated torque : 0.124 kgfm  
 Locked rotor torque : 229 %  
 Breakdown torque : 320 %  
 Rated speed : 1460 rpm

Moment of inertia (J) : 0.0016 kgm<sup>2</sup>  
 Duty cycle : Cont.(S1)  
 Insulation class : F  
 Service factor : 1.15  
 Temperature rise : 80 K

Rev.	Changes Summary		Performed	Checked	Date
Performed by				Page	Revision
Checked by				4 / 4	
Date					



Color Munsell N 1 matte black									
Painting plan 207N									
Mounting B34D									
				HYBRISUSER					00
ECM	LOC	SUMMARY OF MODIFICATIONS			EXECUTED	CHECKED	RELEASED	DATE	VER
EXECUTED	HYBRISUSER	 THREE PH. MOTOR ROLLED STEEL FRAME 56C IP21 ODP			PREVIEW				
CHECKED									
RELEASED									
REL. DATE		WMO	Jaragua do Sul	Product Engineering	SHEET	1 / 1			