

# DATA SHEET

## Three Phase Induction Motor - Squirrel Cage



Customer :

Product line : W22 Brake Motor NEMA Premium Efficiency Three-Phase Product code : 15808380

Frame	: 284/6T	Locked rotor time	: 36s (cold) 20s (hot)
Output	: 15 HP (11 kW)	Temperature rise	: 80 K
Poles	: 6	Duty cycle	: Cont.(S1)
Frequency	: 60 Hz	Ambient temperature	: -20°C to +40°C
Rated voltage	: 575 V	Altitude	: 1000 m.a.s.l.
Rated current	: 14.3 A	Protection degree	: IP55
L. R. Amperes	: 91.6 A	Cooling method	: IC411 - TEFC
LRC	: 6.4x(Code G)	Mounting	: F-1
No load current	: 5.60 A	Rotation <sup>1</sup>	: Both (CW and CCW)
Rated speed	: 1175 rpm	Noise level <sup>2</sup>	: 59.0 dB(A)
Slip	: 2.08 %	Starting method	: Direct On Line
Rated torque	: 9.26 kgfm	Approx. weight <sup>3</sup>	: 221 kg
Locked rotor torque	: 229 %		
Breakdown torque	: 260 %		
Insulation class	: F		
Service factor	: 1.25		
Moment of inertia (J)	: 0.3310 kgm <sup>2</sup>		
Design	: B		

Output	50%	75%	100%	Foundation loads	
Efficiency (%)	91.0	91.7	91.7	Max. traction	: 234 kgf
Power Factor	0.69	0.80	0.84	Max. compression	: 455 kgf

Losses at normative operating points (speed;torque), in percentage of rated output power

P1 (0,9;1,0)	P2 (0,5;1,0)	P3 (0,25;1,0)	P4 (0,9;0,5)	P5 (0,5;0,5)	P6 (0,5;0,25)	P7 (0,25;0,25)
8.9	7.6	7.0	4.1	2.8	1.8	1.2

	Drive end	Non drive end
Bearing type	: 6311 C3	6211 C3
Sealing	: V'Ring	Lip Seal
Lubrication interval	: 20000 h	20000 h
Lubricant amount	: 18 g	11 g
Lubricant type	Mobil Polyrex EM	

Notes

This revision replaces and cancel the previous one, which must be eliminated.

- (1) Looking the motor from the shaft end.
- (2) Measured at 1m and with tolerance of +3dB(A).
- (3) Approximate weight subject to changes after manufacturing process.
- (4) At 100% of full load.

These are average values based on tests with sinusoidal power supply, subject to the tolerances stipulated in NEMA MG-1.

Rev.	Changes Summary	Performed	Checked	Date
Performed by				
Checked by				
Date	23/10/2023			

Page 1 / 3  
Revision

# DATA SHEET

## Three Phase Induction Motor - Squirrel Cage



Customer : \_\_\_\_\_

### Brake information

Voltage: 525-575 V

Brake Torque: 26.5 kgfm

Rev.	Changes Summary		Performed	Checked	Date
Performed by			Page 2 / 3		Revision
Checked by					
Date	23/10/2023				

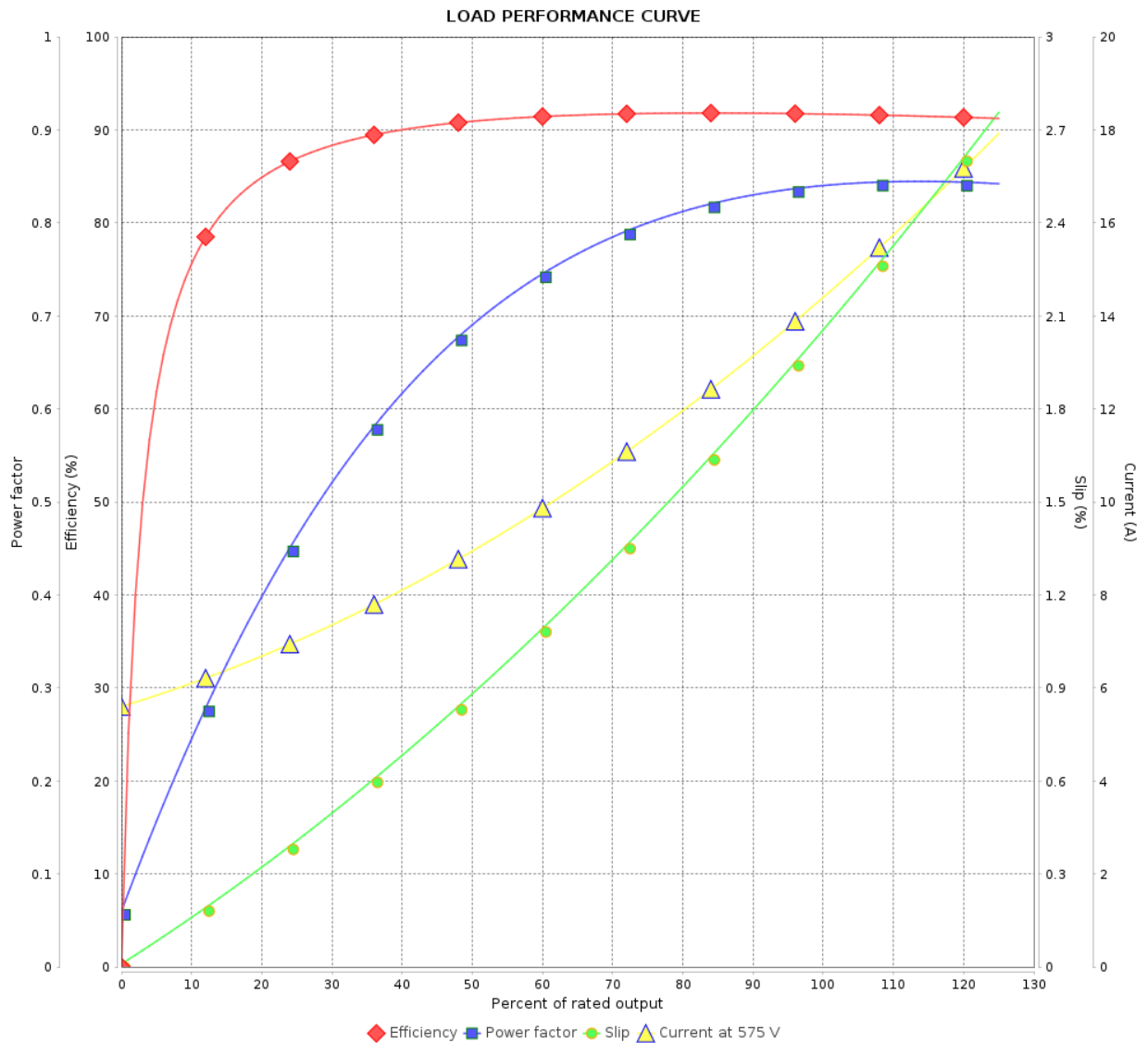
# LOAD PERFORMANCE CURVE

## Three Phase Induction Motor - Squirrel Cage



Customer :

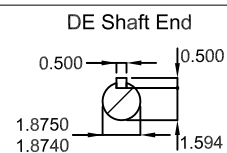
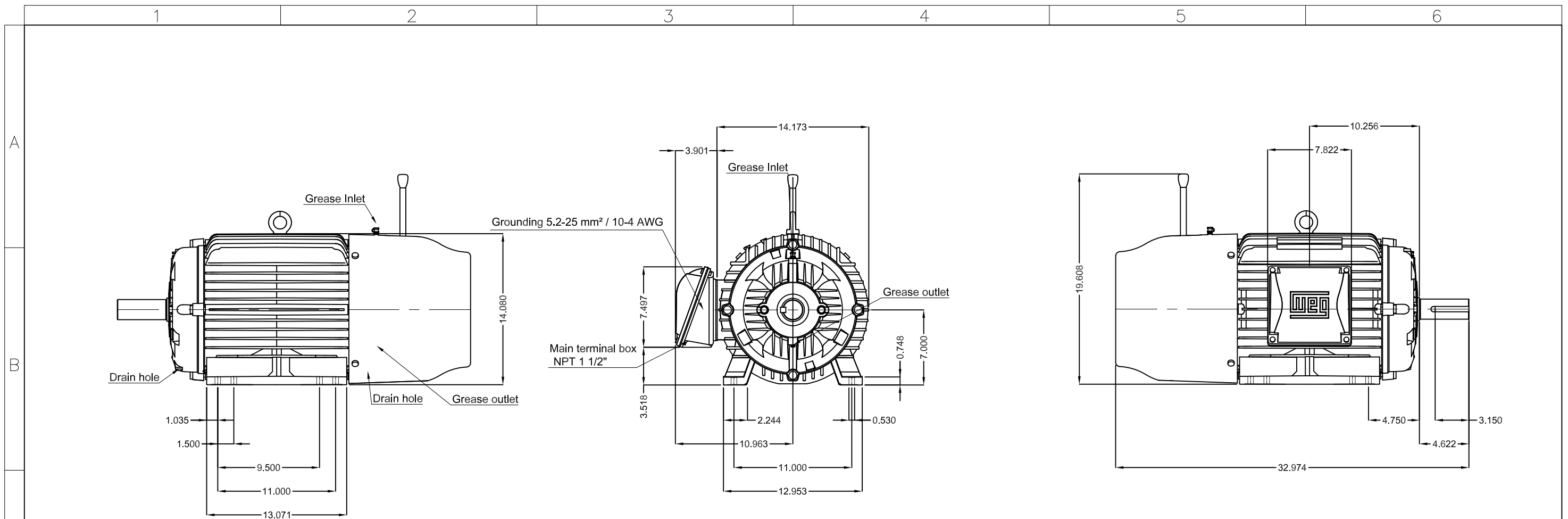
Product line : W22 Brake Motor NEMA Premium Efficiency Three-Phase Product code : 15808380





Performance : 575 V 60 Hz 6P

Rated current	: 14.3 A	Moment of inertia (J)	: 0.3310 kgm <sup>2</sup>
LRC	: 6.4	Duty cycle	: Cont.(S1)
Rated torque	: 9.26 kgfm	Insulation class	: F
Locked rotor torque	: 229 %	Service factor	: 1.25
Breakdown torque	: 260 %	Temperature rise	: 80 K
Rated speed	: 1175 rpm	Design	: B

Rev.	Changes Summary	Performed	Checked	Date
Performed by		Page 3 / 3		
Checked by				
Date	23/10/2023			
		Revision		



15 HP   06 Poles   60 Hz										A
						HYBRISUSER				00
ECM		LOC	SUMMARY OF MODIFICATIONS			EXECUTED	CHECKED	RELEASED	DATE	VER
EXECUTED		HYBRISUSER		THREE PH. MOTOR W22 BRAKE MOTOR NEMA PREM. EFF. FRAME 284/6T IP55 TEFC			PREVIEW WDD   00			
CHECKED										
RELEASED										
REL. DATE										
							SHEET		/	