

DATA SHEET

Single Phase Induction Motor - Squirrel Cage



Customer : V.J. PAMENSKY CANADA INC.

Product line : W01 - TEFC - Premium Efficiency (DOE) Product code : 14757245

Frame	: 56C	Locked rotor time	: 15 s (hot) 27 s (cold)
Output	: 1 HP (0.75 kW)	Temperature rise	: 80 K
Poles	: 2	Duty cycle	: S1
Frequency	: 60 Hz	Ambient temperature	: -20 °C to +40 °C
Rated voltage	: 115/208-230 V	Altitude	: 3280 ft
Rated current	: 8.42/4.95-4.21 A	Protection degree	: IP55
L. R. Amperes	: 69.9/41.1-34.9 A	Cooling method	: IC411 - TEFC
LRC	: 8.3	Mounting	: F-1/B14R(D)
No load current	: 2.00/0.862-1.00 A	Rotation ¹	: Both
Rated speed	: 3505 rpm	Noise level ²	: 68.0 dB(A)
Slip	: 2.64 %	Vibration class	: A
Rated torque	: 1.48 ft.lb	Starting method	: Direct On Line
Locked rotor torque	: 270 %	Approx. weight ³	: 32.0 lb
Pull up torque	: 230 %	Painting plan	: 207N
Breakdown torque	: 290 %	Color	: MUNSELL N 1 - MATTE
Insulation class	: F	Design	: N
Service factor	: 1.15		
Moment of inertia (J)	: 0.0593 sq.ft.lb		

Output	50%	75%	100%	Load type	: -
Efficiency (%)	64.0	72.0	78.5	Load torque	: -
Power Factor	0.95	0.94	0.95	Load inertia (J=GD ² /4)	: -

Bearing type Lubrication interval Lubricant amount Lubricant type	Drive end	Non drive end	Foundation loads Max. traction : - Max. compression : -
	6203-ZZ	6202-ZZ	
	-	-	
	-	-	
	MOBIL POLYREX EM		

Notes
See notes on page 2.

This revision replaces and cancel the previous one, which must be eliminated.
(1) Looking the motor from the shaft end.
(2) Measured at 1m and with tolerance of +3dB(A).
(3) Approximate weight, subject to be changed after manufacturing process.

These are average values based on tests with sinusoidal power supply, subject to the tolerances stipulated in NEMA MG 1-12.

Rev.	Changes Summary	Rev.	Checked	Date
Performed by	farazq	1854375890		
Checked by	AUTOMATICO	Page	Rev.	
Date	29/05/2026	1 / 2	0	

DATA SHEET

Single Phase Induction Motor - Squirrel Cage



Customer : V.J. PAMENSKY CANADA INC.

Product line : W01 - TEFC - Premium Efficiency (DOE) Product code : 14757245

Thermal protection ID	Application	Type	Quantity	Sensing Temperature
-----------------------	-------------	------	----------	---------------------

Notes

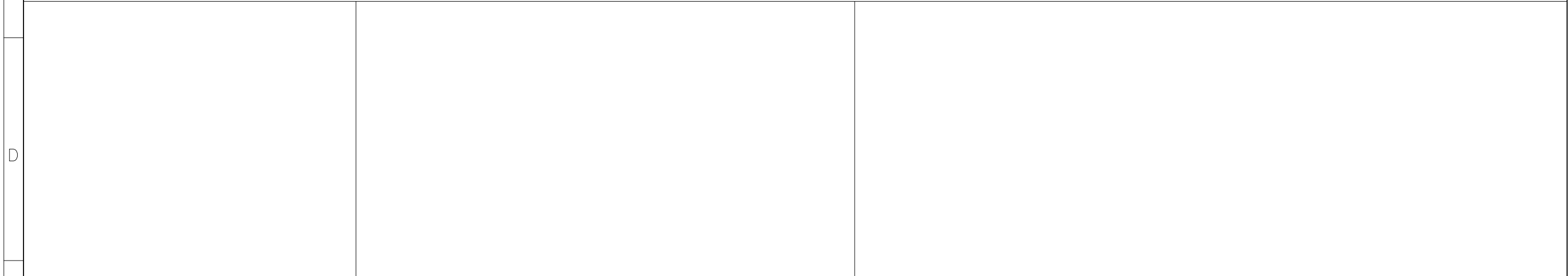
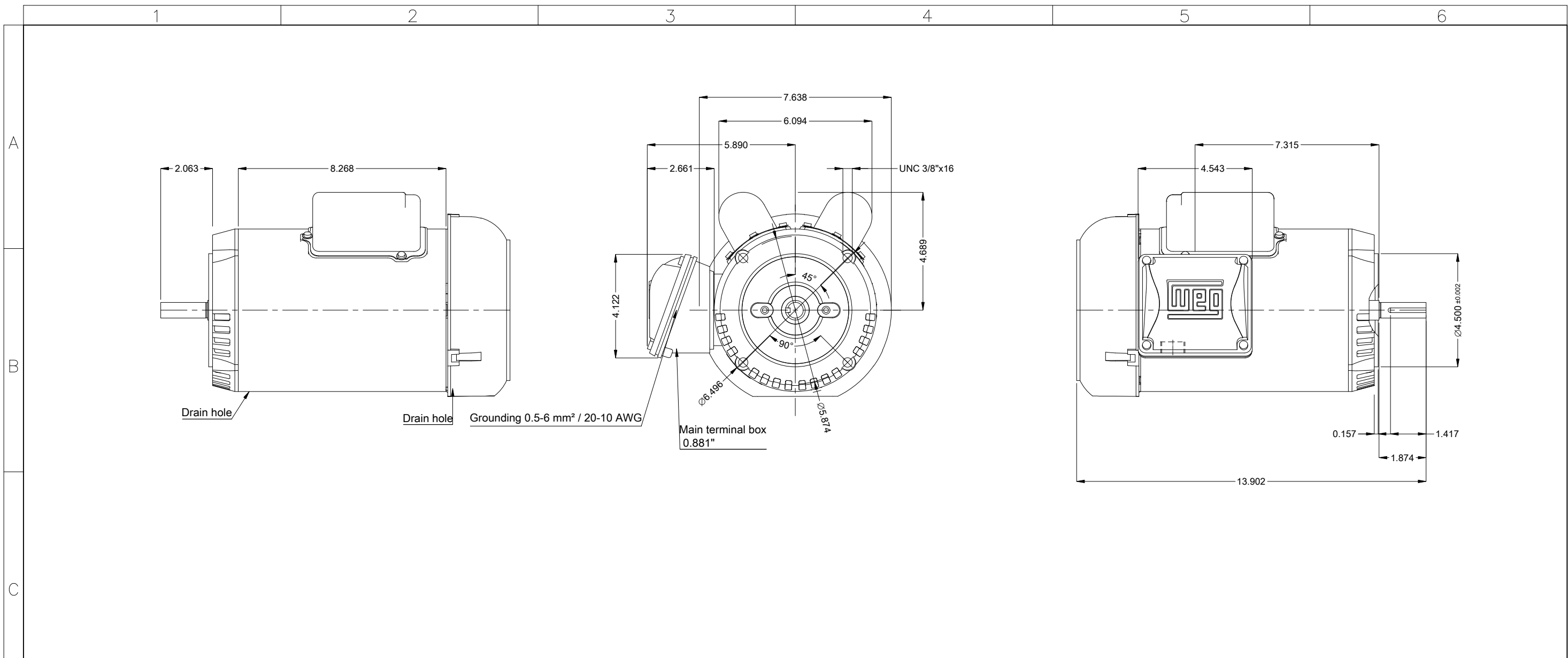
Standards	Specification	: MG1 - Part 10	Vibration	: MG1 - Part 7
	Test	: MG1 - Part 12	Tolerance	: MG1 - Part 12
	Noise	: MG1 - Part 9		

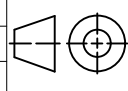

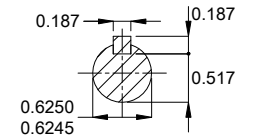
This revision replaces and cancel the previous one, which must be eliminated.

- (1) Looking the motor from the shaft end.
- (2) Measured at 1m and with tolerance of +3dB(A).
- (3) Approximate weight, subject to be changed after manufacturing process.

These are average values based on tests with sinusoidal power supply, subject to the tolerances stipulated in NEMA MG 1-12.

Rev.	Changes Summary	Rev.	Checked	Date
Performed by	farazq		1854375890	
Checked by	AUTOMATICO		Page	Rev.
Date	29/05/2026		2 / 2	0



		1 HP 02 Poles 60 Hz		A	
		Scale 1 : 4			
		HYBRISUSER		00	
ECM	LOC	SUMMARY OF MODIFICATIONS	EXECUTED	CHECKED	RELEASED
EXECUTED	HYBRISUSER	 SINGLE PH. MOTOR ROLLED STEEL PREM. EFF. FRAME 56C IP55 TEFC	PREVIEW		
CHECKED			WDD	00	
RELEASED			SHEET 1 / 1		
REL. DATE					
DE Shaft End 					
Color Munsell N 1 matte black Painting plan 207N Mounting MARKET F-1/B14R(D) Mounting F-1/B14R(D)					