

DATA SHEET

Three Phase Induction Motor - Squirrel Cage



Customer :

Product line : W22 Tru-Metric IE3 Three-Phase Product code : 12564983

Frame	: 132M	Locked rotor time	: 77s (cold) 43s (hot)
Output	: 5.5 HP (4 kW)	Temperature rise	: 80 K
Poles	: 6	Duty cycle	: S1
Frequency	: 60 Hz	Ambient temperature	: -20°C to +40°C
Rated voltage	: 575 V	Altitude	: 1000 m.a.s.l.
Rated current	: 6.32 A	Protection degree	: IP55
L. R. Amperes	: 44.2 A	Cooling method	: IC411 - TEFC
LRC	: 7.0	Mounting	: B35L(E)
No load current	: 3.84 A	Rotation ¹	: Both (CW and CCW)
Rated speed	: 1165 rpm	Noise level ²	: 55.0 dB(A)
Slip	: 2.92 %	Starting method	: Direct On Line
Rated torque	: 3.43 kgfm	Approx. weight ³	: 82.0 kg
Locked rotor torque	: 190 %		
Breakdown torque	: 300 %		
Insulation class	: F		
Service factor	: 1.25		
Moment of inertia (J)	: 0.0566 kgm ²		
Design	: N		

Output	50%	75%	100%	Foundation loads	
Efficiency (%)	85.5	88.5	89.5	Max. traction	: 149 kgf
Power Factor	0.50	0.63	0.71	Max. compression	: 231 kgf

Losses at normative operating points (speed;torque), in percentage of rated output power

P1 (0,9;1,0)	P2 (0,5;1,0)	P3 (0,25;1,0)	P4 (0,9;0,5)	P5 (0,5;0,5)	P6 (0,5;0,25)	P7 (0,25;0,25)
11.1	8.9	8.3	6.4	4.4	3.4	2.5

	Drive end	Non drive end
Bearing type	: 6308 ZZ	: 6207 ZZ
Sealing	: V'Ring	: V'Ring
Lubrication interval	: -	: -
Lubricant amount	: -	: -
Lubricant type	: Mobil Polyrex EM	

Notes

This revision replaces and cancel the previous one, which must be eliminated.

- (1) Looking the motor from the shaft end.
- (2) Measured at 1m and with tolerance of +3dB(A).
- (3) Approximate weight subject to changes after manufacturing process.
- (4) At 100% of full load.

These are average values based on tests with sinusoidal power supply, subject to the tolerances stipulated in NEMA MG-1.

Rev.	Changes Summary	Performed	Checked	Date
Performed by		Page Revision 1 / 2		
Checked by				
Date	25/10/2024			

LOAD PERFORMANCE CURVE

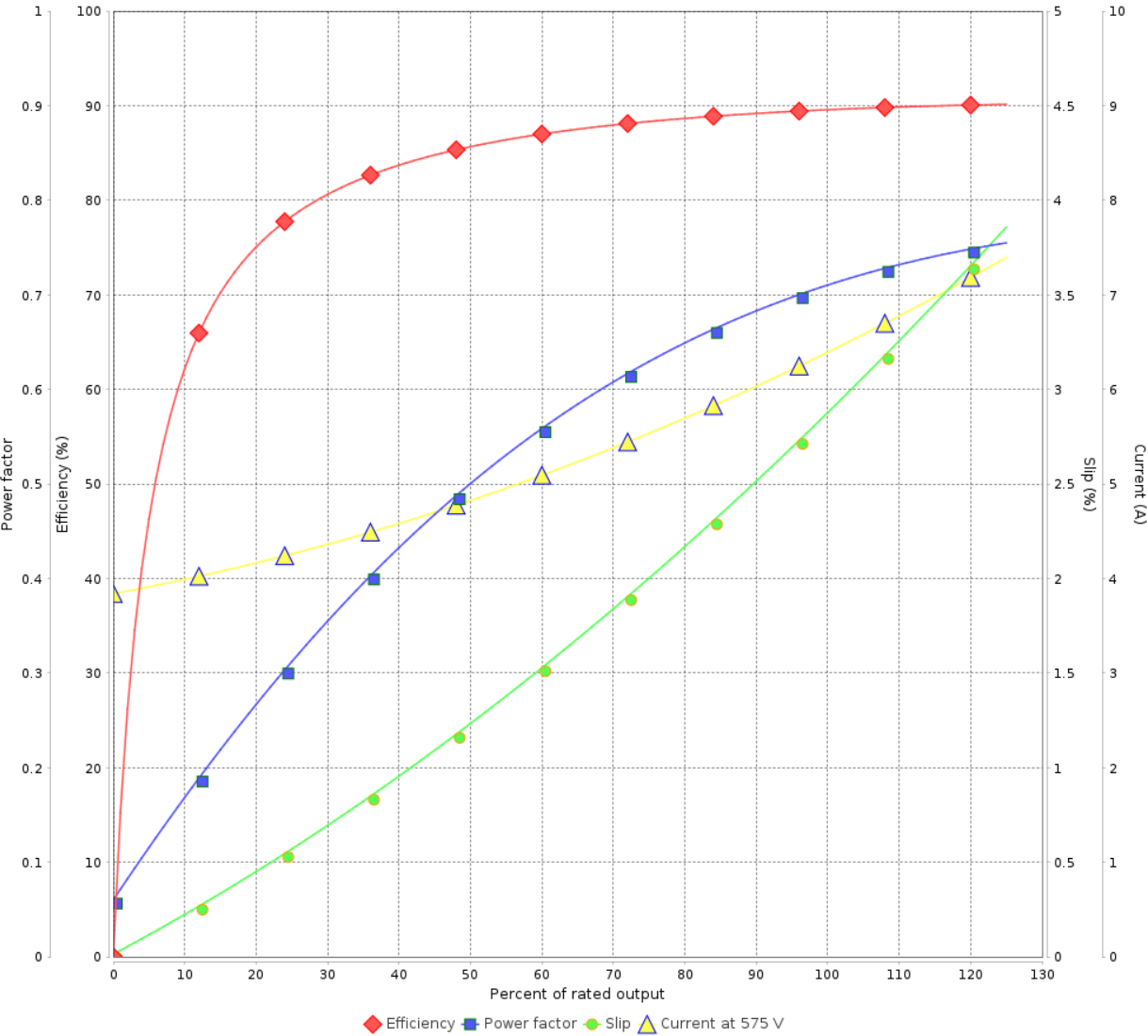
Three Phase Induction Motor - Squirrel Cage



Customer :

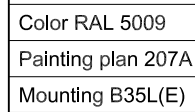
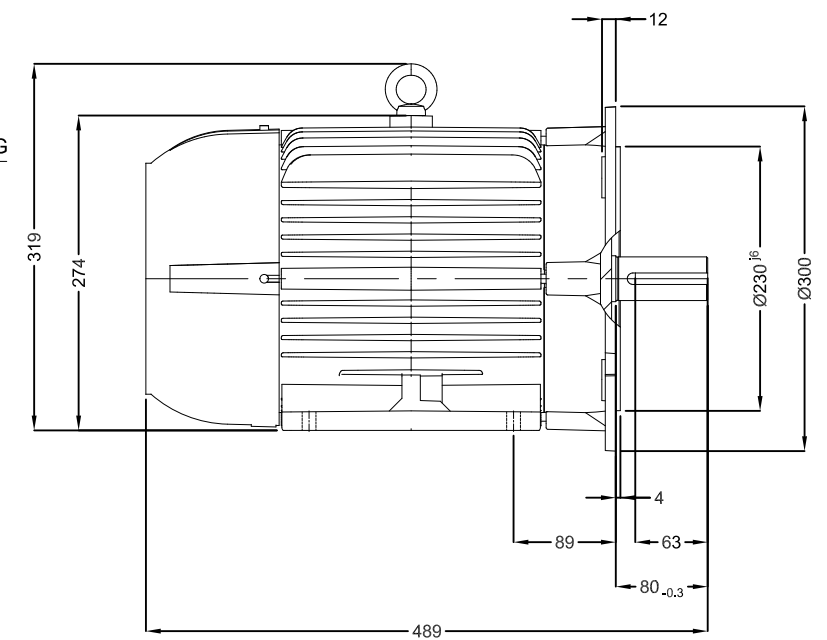
Product line : W22 Tru-Metric IE3 Three-Phase Product code : 12564983

LOAD PERFORMANCE CURVE



Performance : 575 V 60 Hz 6P			
Rated current	: 6.32 A	Moment of inertia (J)	: 0.0566 kgm²
LRC	: 7.0	Duty cycle	: S1
Rated torque	: 3.43 kgfm	Insulation class	: F
Locked rotor torque	: 190 %	Service factor	: 1.25
Breakdown torque	: 300 %	Temperature rise	: 80 K
Rated speed	: 1165 rpm	Design	: N

Rev.	Changes Summary		Performed	Checked	Date
Performed by				Page 2 / 2	Revision
Checked by					
Date	25/10/2024				



WEG's property. Forbidden reproduction without previous authorization.