

DATA SHEET

Three Phase Induction Motor - Squirrel Cage



| | | | | | |
|---|----------------------|---|--|----------------------------|----------|
| Customer : | | | | | |
| Product line | | : W22 NEMA Premium Efficiency Three-Phase | Product code : 12717200 | | |
| Frame : 182/4TC | | Cooling method : IC411 - TEFC | | | |
| Insulation class : F | | Mounting : F-1 | | | |
| Duty cycle : Cont.(S1) | | Rotation ¹ : Both (CW and CCW) | | | |
| Ambient temperature : -20°C to +40°C | | Starting method : Direct On Line | | | |
| Altitude : 1000 m.a.s.l. | | Approx. weight ³ : 40.6 kg | | | |
| Protection degree : IP55 | | Moment of inertia (J) : 0.0143 kgm ² | | | |
| Design : B | | | | | |
| Output [HP] | 3 | 3 | 3 | 3 | |
| Poles | 4 | 4 | 4 | 4 | |
| Frequency [Hz] | 60 | 50 | 50 | 50 | |
| Rated voltage [V] | 230/460 | 380 | 400 | 415 | |
| Rated current [A] | 8.02/4.01 | 4.78 | 4.54 | 4.43 | |
| L. R. Amperes [A] | 65.8/32.9 | 30.1 | 32.2 | 33.7 | |
| LRC [A] | 8.2x(Code K) | 6.3x(Code H) | 7.1x(Code J) | 7.6x(Code K) | |
| No load current [A] | 4.00/2.00 | 2.10 | 2.20 | 2.35 | |
| Rated speed [RPM] | 1765 | 1455 | 1460 | 1465 | |
| Slip [%] | 1.94 | 3.00 | 2.67 | 2.33 | |
| Rated torque [kgfm] | 1.23 | 1.50 | 1.49 | 1.49 | |
| Locked rotor torque [%] | 220 | 220 | 220 | 220 | |
| Breakdown torque [%] | 320 | 250 | 270 | 290 | |
| Service factor | 1.25 | 1.25 | 1.25 | 1.25 | |
| Temperature rise | 80 K | 80 K | 80 K | 80 K | |
| Locked rotor time | 41s (cold) 23s (hot) | 32s (cold) 18s (hot) | 32s (cold) 18s (hot) | 32s (cold) 18s (hot) | |
| Noise level ² | 56.0 dB(A) | 56.0 dB(A) | 56.0 dB(A) | 56.0 dB(A) | |
| Efficiency (%) | 25% | | | | |
| | 50% | 87.5 | 87.5 | 87.5 | |
| | 75% | 88.5 | 87.5 | 87.5 | |
| | 100% | 89.5 | 87.5 | 87.5 | |
| Power Factor | 25% | | | | |
| | 50% | 0.58 | 0.65 | 0.62 | |
| | 75% | 0.69 | 0.77 | 0.73 | |
| | 100% | 0.77 | 0.80 | 0.80 | |
| Losses at normative operating points (speed;torque), in percentage of rated output power | | | | | |
| Losses (%) | P1 (0,9;1,0) | 12.7 | 12.9 | 13.7 | 13.8 |
| | P2 (0,5;1,0) | 11.2 | 11.3 | 12.0 | 12.1 |
| | P3 (0,25;1,0) | 10.8 | 11.0 | 11.7 | 11.7 |
| | P4 (0,9;0,5) | 6.7 | 6.8 | 7.2 | 7.3 |
| | P5 (0,5;0,5) | 5.0 | 5.1 | 5.4 | 5.4 |
| | P6 (0,5;0,25) | 3.7 | 3.7 | 4.0 | 4.0 |
| | P7 (0,25;0,25) | 2.8 | 2.9 | 3.1 | 3.1 |
| Bearing type | | Drive end : 6207 ZZ | Non drive end : 6206 ZZ | Foundation loads | |
| Sealing | | : V'Ring | : V'Ring | Max. traction : 70 kgf | |
| Lubrication interval | | : - | : - | Max. compression : 110 kgf | |
| Lubricant amount | | : - | : - | | |
| Lubricant type | | : 00088 | | | |
| This revision replaces and cancel the previous one, which must be eliminated. (1) Looking the motor from the shaft end. (2) Measured at 1m and with tolerance of +3dB(A). (3) Approximate weight subject to changes after manufacturing process. | | | These are average values based on tests with sinusoidal power supply, subject to the tolerances stipulated in NEMA MG-1. | | |
| Rev. | Changes Summary | | Performed | Checked | Date |
| Performed by | | | | | |
| Checked by | | | | Page | Revision |
| Date | 31/05/2026 | | | 1 / 6 | |

DATA SHEET

Three Phase Induction Motor - Squirrel Cage



Customer : _____

Notes
USABLE @208V 8.65A SF 1.15 SFA 9.95A

| Rev. | Changes Summary | Performed | Checked | Date |
|--------------|-----------------|-----------|---------|----------|
| Performed by | | | | |
| Checked by | | | Page | Revision |
| Date | 31/05/2026 | | 2 / 6 | |

LOAD PERFORMANCE CURVE

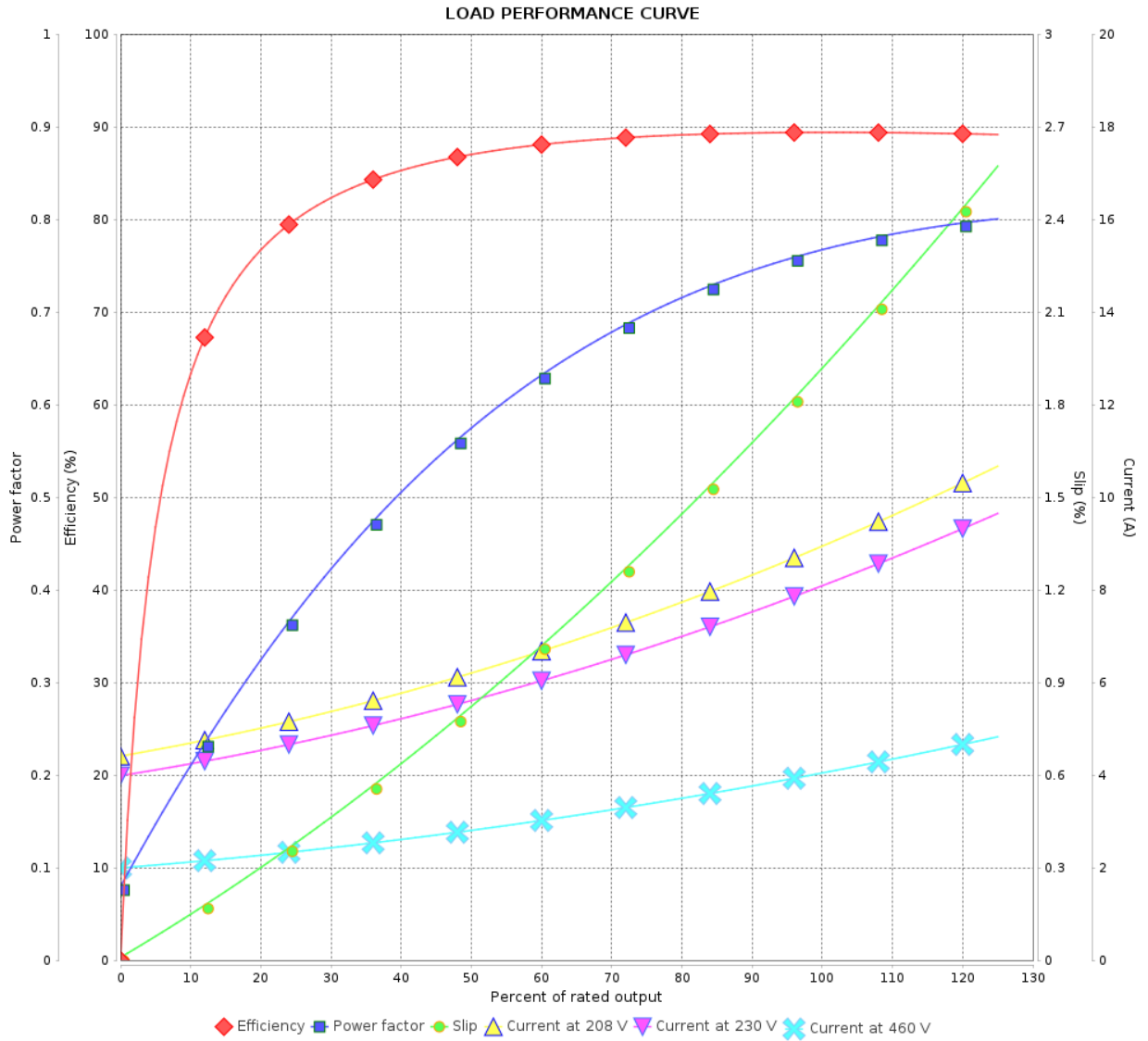
Three Phase Induction Motor - Squirrel Cage



Customer :

Product line : W22 NEMA Premium Efficiency Three-Phase

Product code : 12717200



| Rev. | Changes Summary | Performed | Checked | Date |
|--------------|-----------------|-----------|---------------|----------|
| | | | | |
| Performed by | | | Page 3 / 6 | Revision |
| Checked by | | | | |
| Date | 31/05/2026 | | | |

LOAD PERFORMANCE CURVE

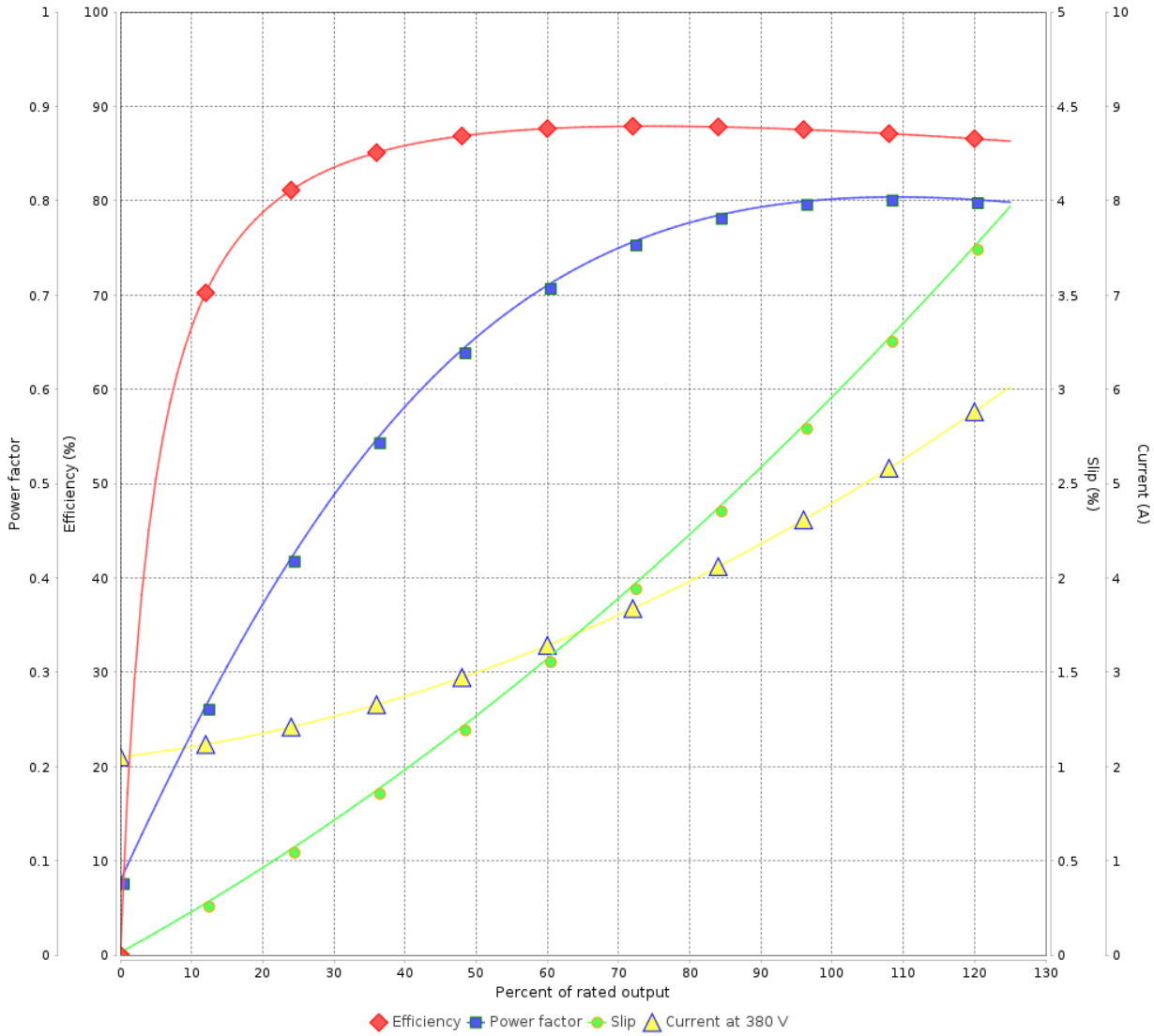
Three Phase Induction Motor - Squirrel Cage



Customer : _____

Product line : W22 NEMA Premium Efficiency Three-Phase Product code : 12717200

LOAD PERFORMANCE CURVE



| Rev. | Changes Summary | Performed | Checked | Date |
|--------------|-----------------|-----------|---------------|----------|
| | | | | |
| Performed by | | | Page 4 / 6 | Revision |
| Checked by | | | | |
| Date | | | | |

LOAD PERFORMANCE CURVE

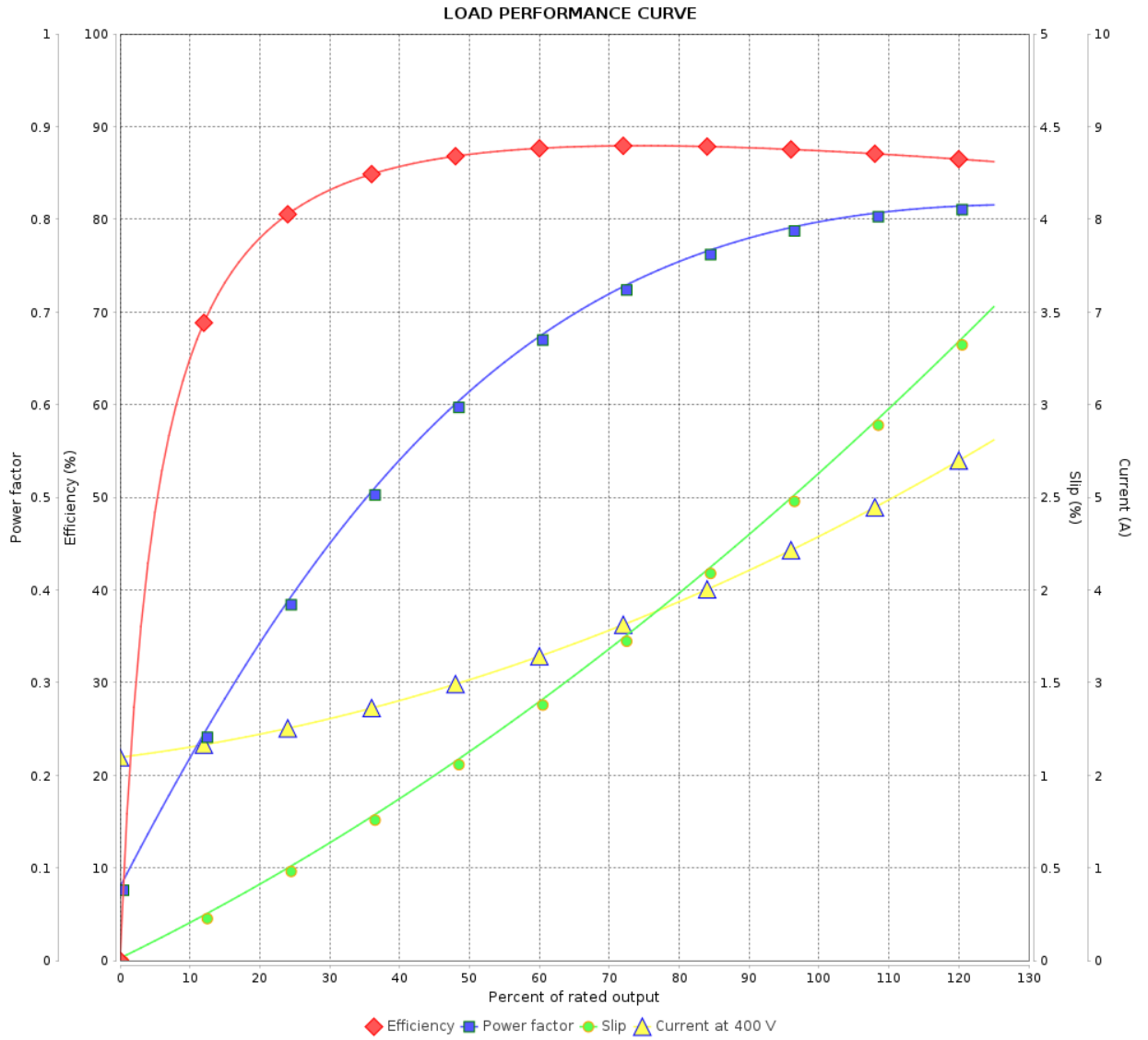
Three Phase Induction Motor - Squirrel Cage



Customer :

Product line : W22 NEMA Premium Efficiency Three-Phase

Product code : 12717200



| Rev. | Changes Summary | Performed | Checked | Date |
|--------------|-----------------|-----------|---------------|----------|
| | | | | |
| Performed by | | | | |
| Checked by | | | | |
| Date | | | | |
| | | | Page 5 / 6 | Revision |

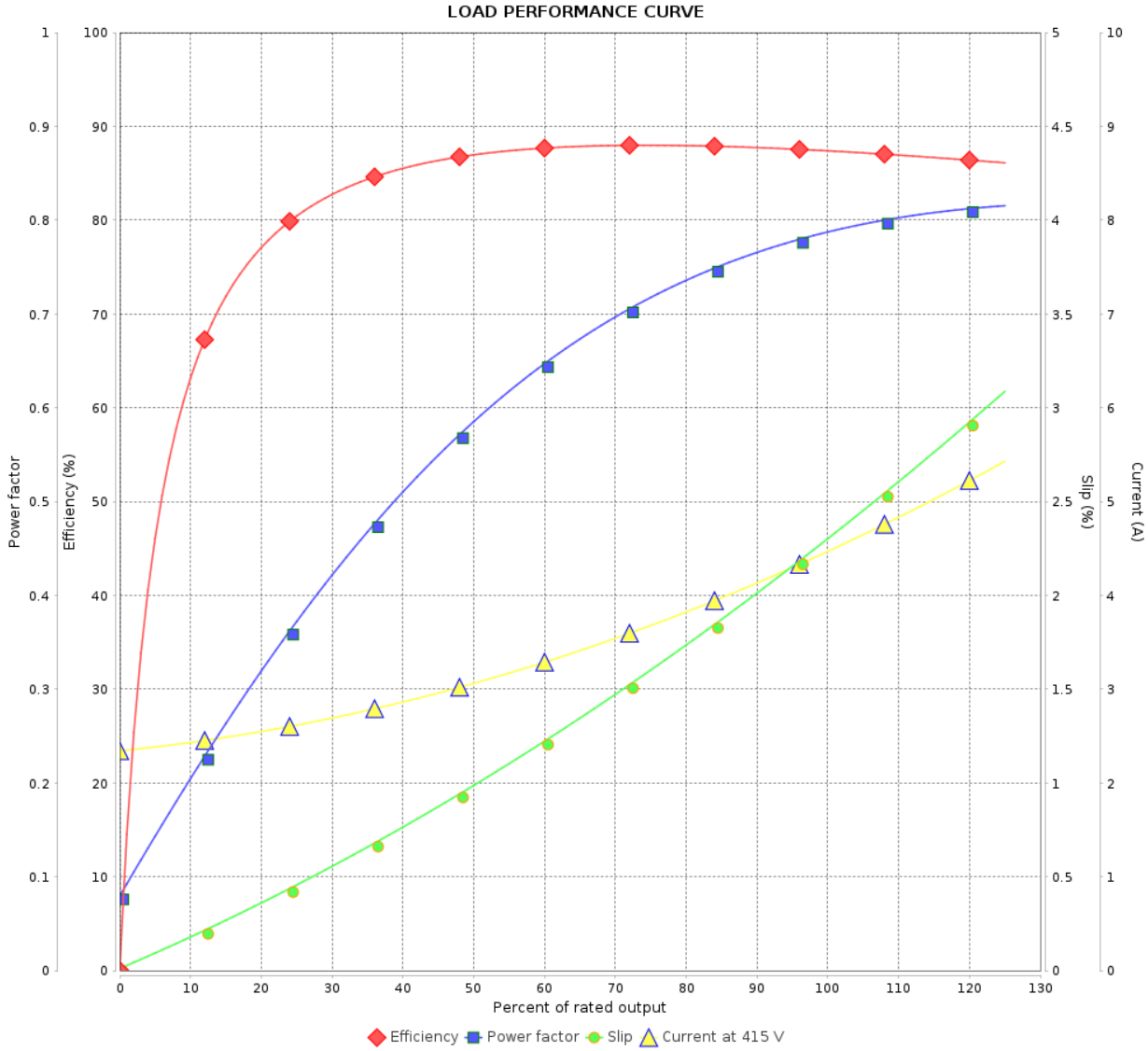
LOAD PERFORMANCE CURVE

Three Phase Induction Motor - Squirrel Cage

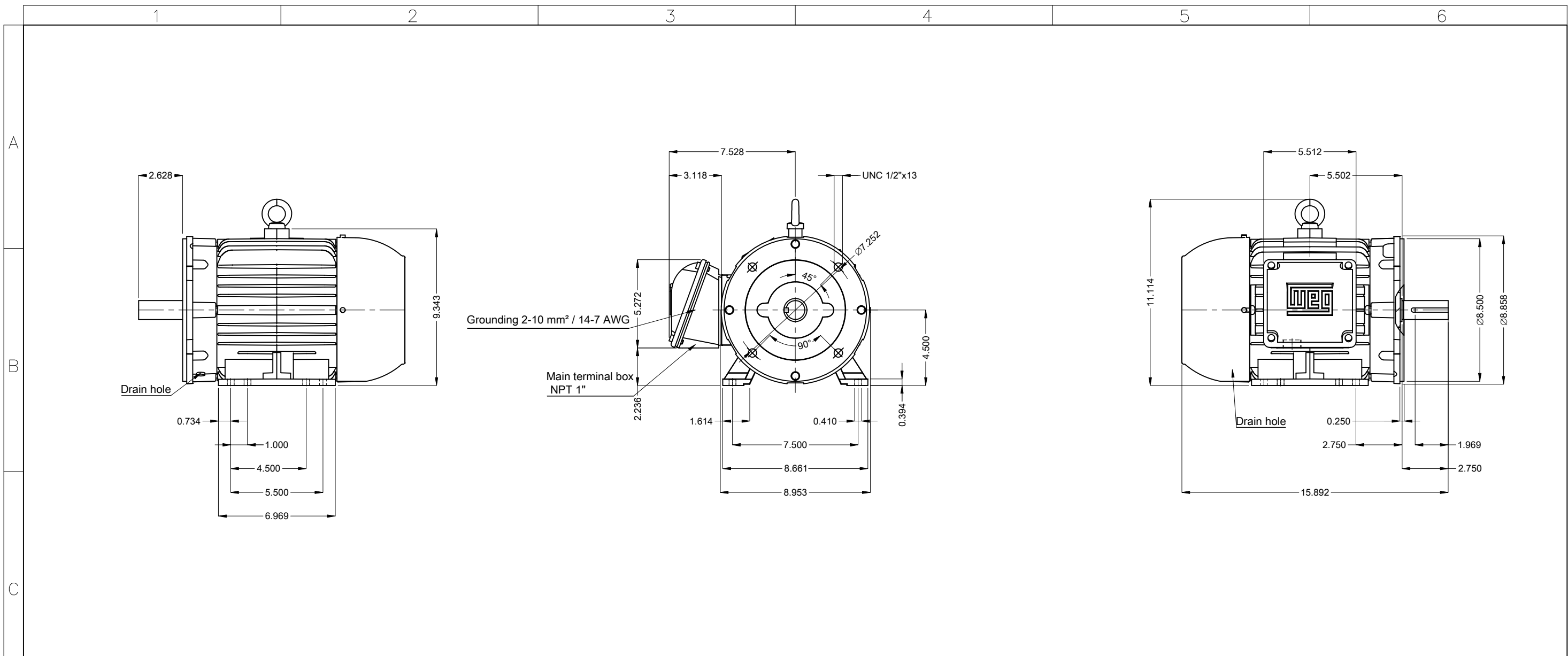


Customer :

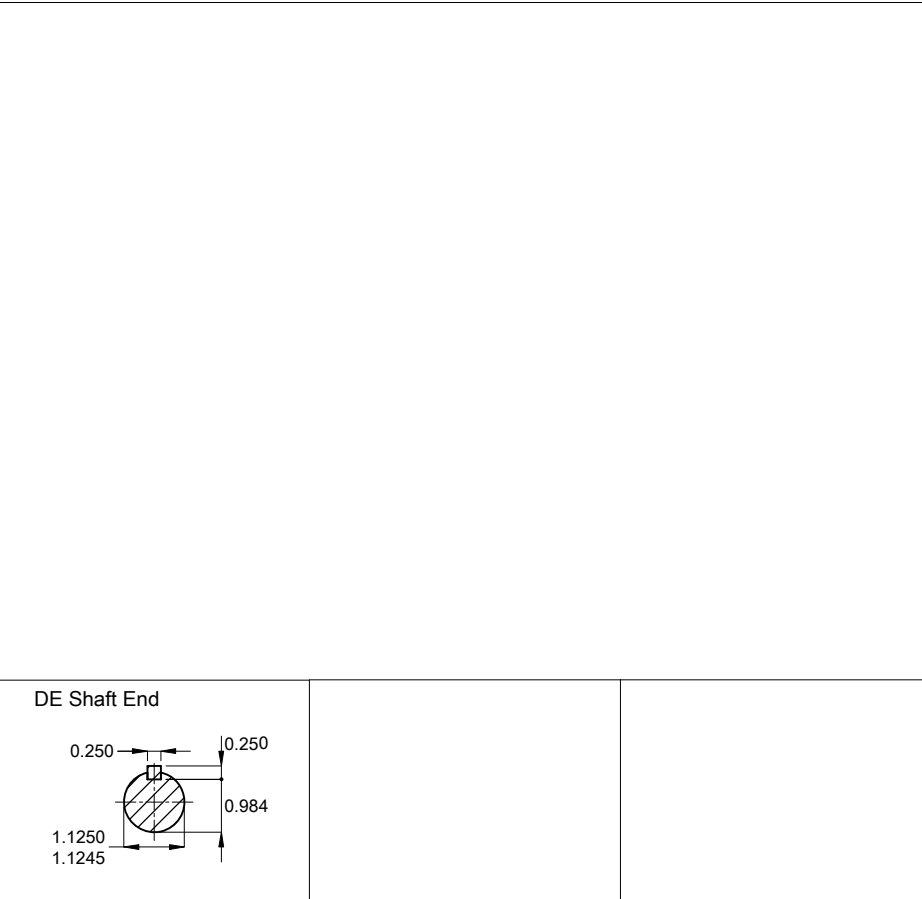
Product line : W22 NEMA Premium Efficiency Three-Phase Product code : 12717200



| Rev. | Changes Summary | Performed | Checked | Date |
|--------------|-----------------|-----------|---------------|----------|
| | | | | |
| Performed by | | | Page 6 / 6 | Revision |
| Checked by | | | | |
| Date | 31/05/2026 | | | |



Color RAL 5009
 Painting plan 207A
 Mounting NEMA F-1
 Mounting B34D



| | | | | | | | | | | | |
|---------------------|------------|-------------------------------------|--|--|--|--|----------|---------|----------|------|-----|
| 3 HP 04 Poles 60 Hz | | | | | | | | | | A | |
| Scale 1 : 6 | | | | | | | | | | | |
| HYBRISUSER | | | | | | | | | | 00 | |
| ECM | LOC | SUMMARY OF MODIFICATIONS | | | | | EXECUTED | CHECKED | RELEASED | DATE | VER |
| EXECUTED | HYBRISUSER | THREE PH. MOTOR W22 NEMA PREM. EFF. | | | | | PREVIEW | | | | |
| CHECKED | | FRAME 182/4TC IP55 TEFC | | | | | WDD | 00 | | | |
| RELEASED | | | | | | | SHEET | | 1 / 1 | | |
| REL. DATE | | | | | | | | | | | |