

DATA SHEET

Three Phase Induction Motor - Squirrel Cage



Customer :

Product line : W22 Tru-Metric IE3 Three-Phase Product code : 12761144

Frame	: 180L	Locked rotor time	: 32s (cold) 18s (hot)
Output	: 30 HP (22 kW)	Temperature rise	: 80 K
Poles	: 4	Duty cycle	: S1
Frequency	: 60 Hz	Ambient temperature	: -20°C to +40°C
Rated voltage	: 575 V	Altitude	: 1000 m.a.s.l.
Rated current	: 28.8 A	Protection degree	: IP55
L. R. Amperes	: 274 A	Cooling method	: IC411 - TEFC
LRC	: 9.5	Mounting	: B35L(E)
No load current	: 13.4 A	Rotation ¹	: Both (CW and CCW)
Rated speed	: 1778 rpm	Noise level ²	: 63.0 dB(A)
Slip	: 1.22 %	Starting method	: Direct On Line
Rated torque	: 12.2 kgfm	Approx. weight ³	: 206 kg
Locked rotor torque	: 360 %		
Breakdown torque	: 380 %		
Insulation class	: F		
Service factor	: 1.25		
Moment of inertia (J)	: 0.2272 kgm ²		
Design	: N		

Output	50%	75%	100%	Foundation loads	
Efficiency (%)	91.0	92.4	93.6	Max. traction	: 564 kgf
Power Factor	0.65	0.76	0.82	Max. compression	: 769 kgf

Losses at normative operating points (speed;torque), in percentage of rated output power

P1 (0,9;1,0)	P2 (0,5;1,0)	P3 (0,25;1,0)	P4 (0,9;0,5)	P5 (0,5;0,5)	P6 (0,5;0,25)	P7 (0,25;0,25)
6.5	5.0	4.4	3.8	2.4	1.8	1.2

	Drive end	Non drive end
Bearing type	: 6311 C3	6211 C3
Sealing	: V'Ring	V'Ring
Lubrication interval	: 20000 h	20000 h
Lubricant amount	: 18 g	11 g
Lubricant type	Mobil Polyrex EM	

Notes

This revision replaces and cancel the previous one, which must be eliminated.

- (1) Looking the motor from the shaft end.
- (2) Measured at 1m and with tolerance of +3dB(A).
- (3) Approximate weight subject to changes after manufacturing process.
- (4) At 100% of full load.

These are average values based on tests with sinusoidal power supply, subject to the tolerances stipulated in NEMA MG-1.

Rev.	Changes Summary	Performed	Checked	Date
Performed by		Page 1 / 2 Revision		
Checked by				
Date	25/10/2024			

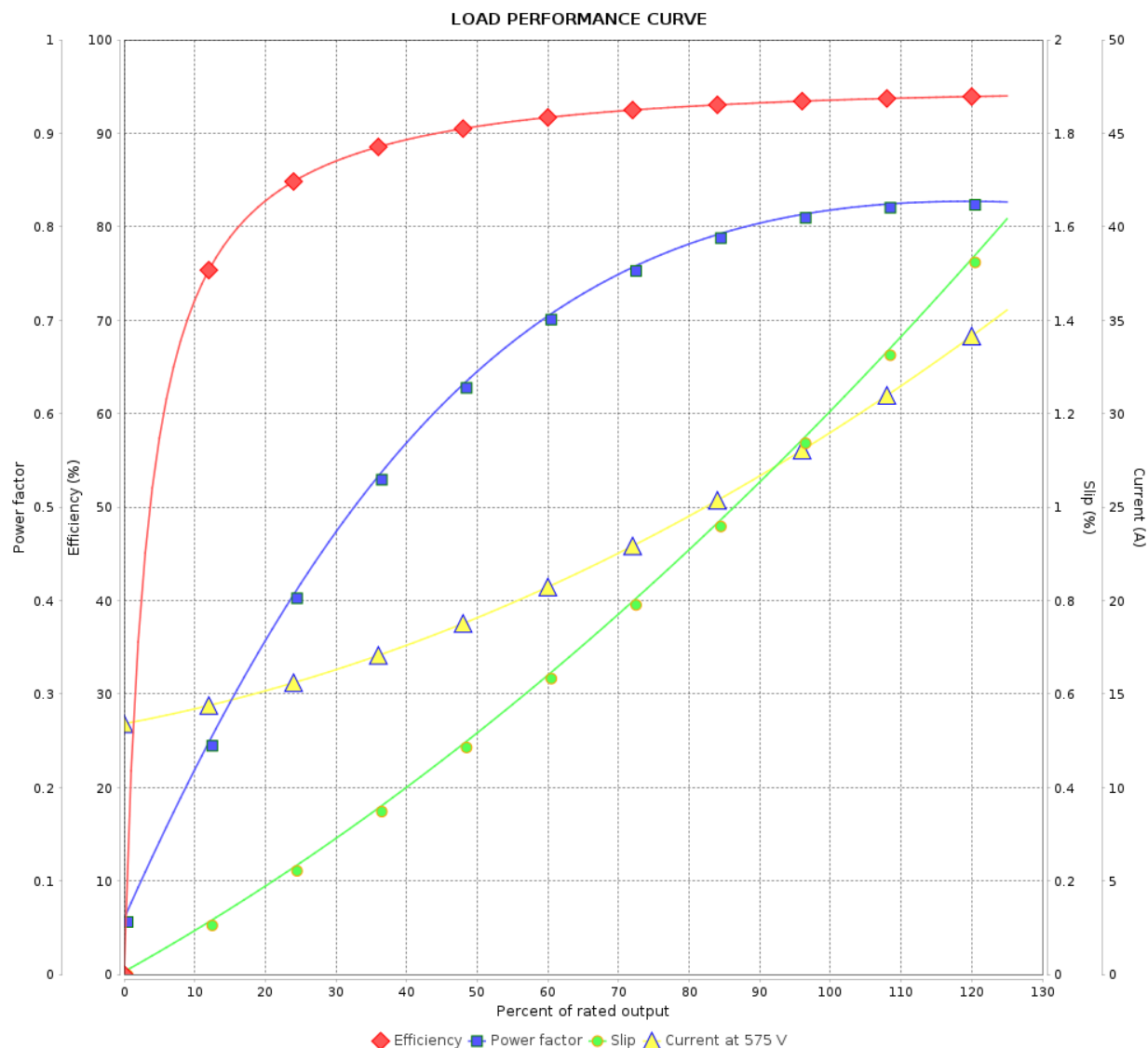
LOAD PERFORMANCE CURVE

Three Phase Induction Motor - Squirrel Cage



Customer :

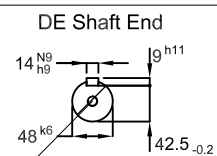
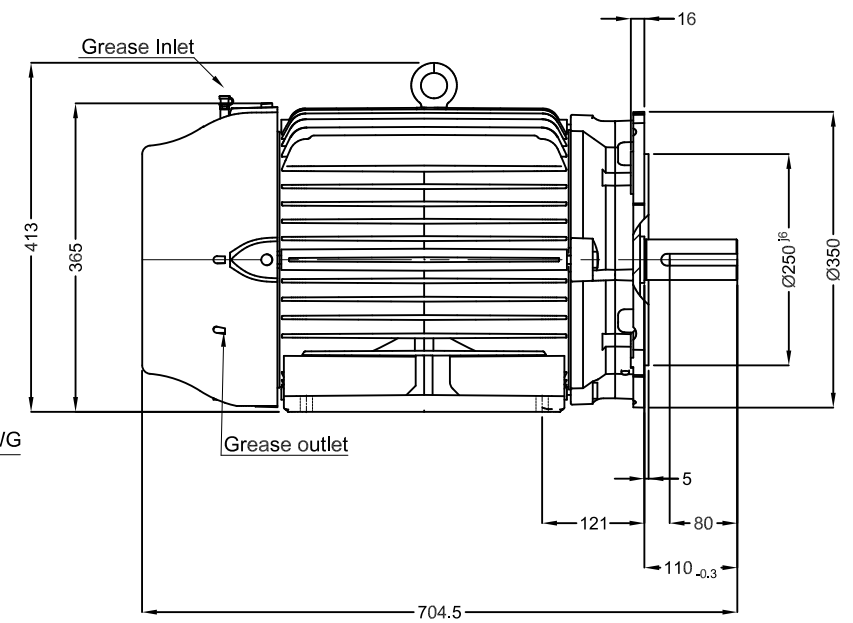
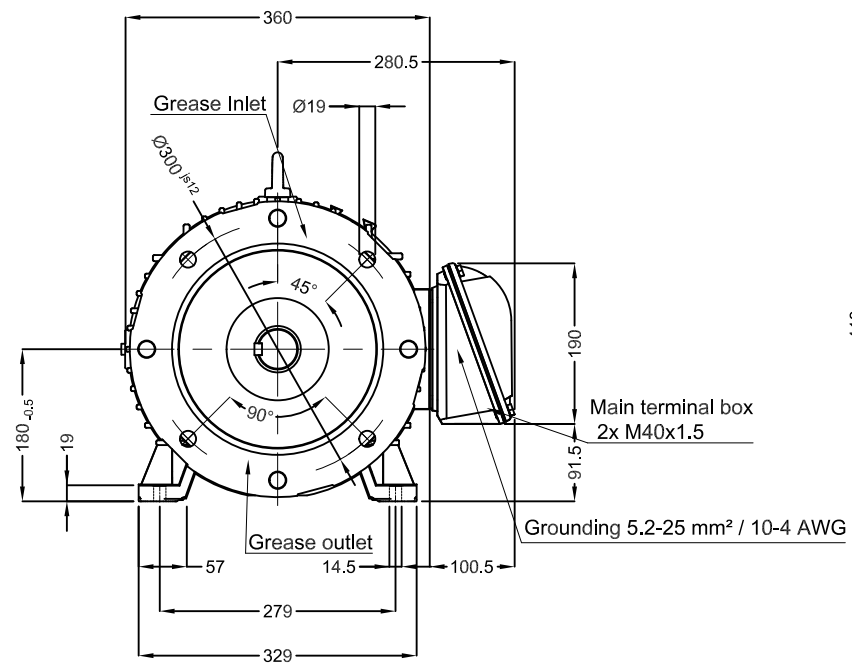
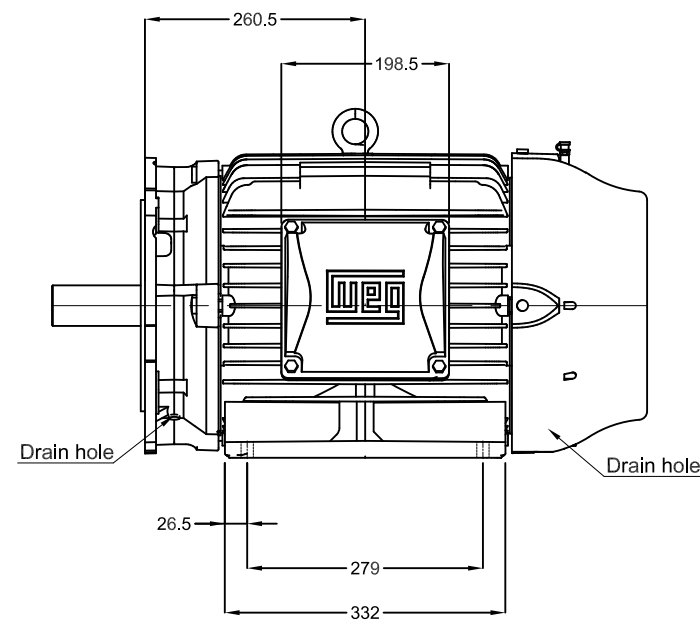
Product line : W22 Tru-Metric IE3 Three-Phase Product code : 12761144





Performance : 575 V 60 Hz 4P

Rated current	: 28.8 A	Moment of inertia (J)	: 0.2272 kgm ²
LRC	: 9.5	Duty cycle	: S1
Rated torque	: 12.2 kgfm	Insulation class	: F
Locked rotor torque	: 360 %	Service factor	: 1.25
Breakdown torque	: 380 %	Temperature rise	: 80 K
Rated speed	: 1778 rpm	Design	: N

Rev.	Changes Summary	Performed	Checked	Date
Performed by		Page 2 / 2Revision		
Checked by				
Date	25/10/2024			



DM16 WEG WPR-7339 (DS DIN332)

30 HP 04 Poles 60 Hz										A	
							HYBRISUSER			00	
ECM		LOC	SUMMARY OF MODIFICATIONS				EXECUTED	CHECKED	RELEASED	DATE	VER
EXECUTED	HYBRISUSER		THREE PH. MOTOR W22 IE3 FRAME 180L IP55 TEFC					PREVIEW WDD 00			
CHECKED											
RELEASED											
REL. DATE							SHEET		/		