

# DATA SHEET



## Three Phase Induction Motor - Squirrel Cage

Customer :

Product line : Rolled Steel NEMA Premium Efficiency Three-Phase      Product code : 19222762

Frame	: 143/5TC	Locked rotor time	: 18s (cold) 10s (hot)
Output	: 3 HP (2.2 kW)	Temperature rise	: 80 K
Frequency	: 60 Hz	Duty cycle	: Cont.(S1)
Rated voltage	: 230/460 V	Ambient temperature	: -20°C to +40°C
Poles	: 2	Altitude	: 1000 m.a.s.l.
Rated current	: 7.02/3.51 A	Protection degree	: IP55
	: 9.5x(Code K)	Cooling method	: IC411 - TEFC
Rated speed	: 3500 rpm	Mounting	: F-1
Rated torque	: 0.622 kgfm	Rotation <sup>1</sup>	: Both (CW and CCW)
Insulation class	: F	Noise level <sup>2</sup>	: 68.0 dB(A)
Service factor	: 1.15	Starting method	: Direct On Line
Moment of inertia (J)	: 0.0070 kgm <sup>2</sup>	Approx. weight <sup>3</sup>	: 22.9 kg
Design	: B		

Output	50%	75%	100%	Foundation loads	
Efficiency (%)	84.0	86.5	86.5	Max. traction	: 61 kgf
Power Factor	0.78	0.87	0.91	Max. compression	: 84 kgf

Losses at normative operating points (speed;torque), in percentage of rated output power

P1 (0,9;1,0)	P2 (0,5;1,0)	P3 (0,25;1,0)	P4 (0,9;0,5)	P5 (0,5;0,5)	P6 (0,5;0,25)	P7 (0,25;0,25)
14.5	10.8	9.9	8.0	4.4	3.0	1.7

	Drive end	Non drive end
Bearing type	: 6205 ZZ	: 6203 ZZ
Sealing	: V'Ring	: Without Bearing Seal
Lubrication interval	: -	: -
Lubricant amount	: -	: -
Lubricant type	: Mobil Polyrex EM	

### Notes

USABLE @208V 7.76A SF 1.00 SFA 7.76A

This revision replaces and cancel the previous one, which must be eliminated.

- (1) Looking the motor from the shaft end.
- (2) Measured at 1m and with tolerance of +3dB(A).
- (3) Approximate weight subject to changes after manufacturing process.
- (4) At 100% of full load.

These are average values based on tests with sinusoidal power supply, subject to the tolerances stipulated in NEMA MG-1.

Rev.	Changes Summary	Performed	Checked	Date
Performed by				
Checked by			Page	Revision
Date	18/04/2026		1 / 2	

# LOAD PERFORMANCE CURVE

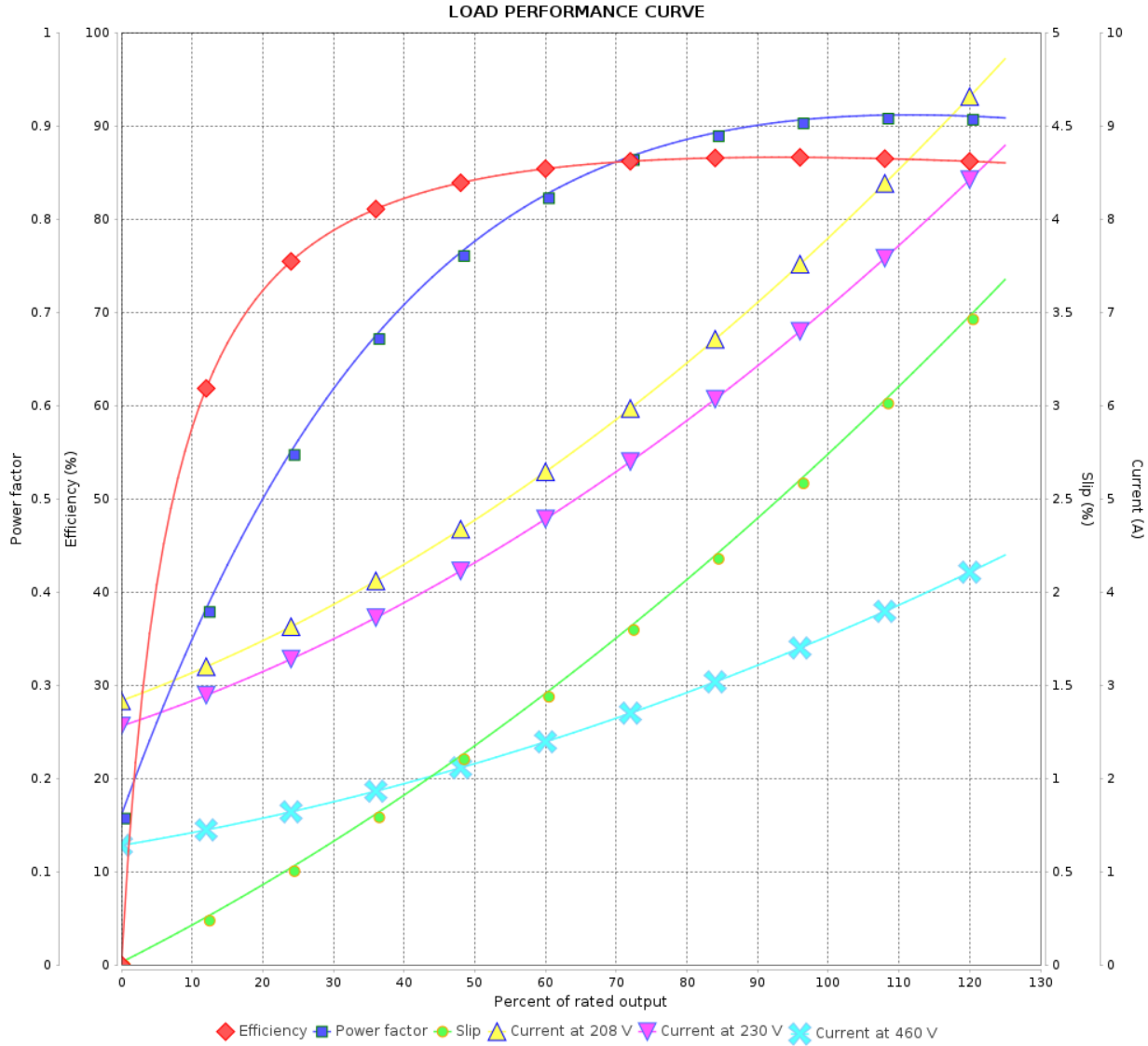
Three Phase Induction Motor - Squirrel Cage



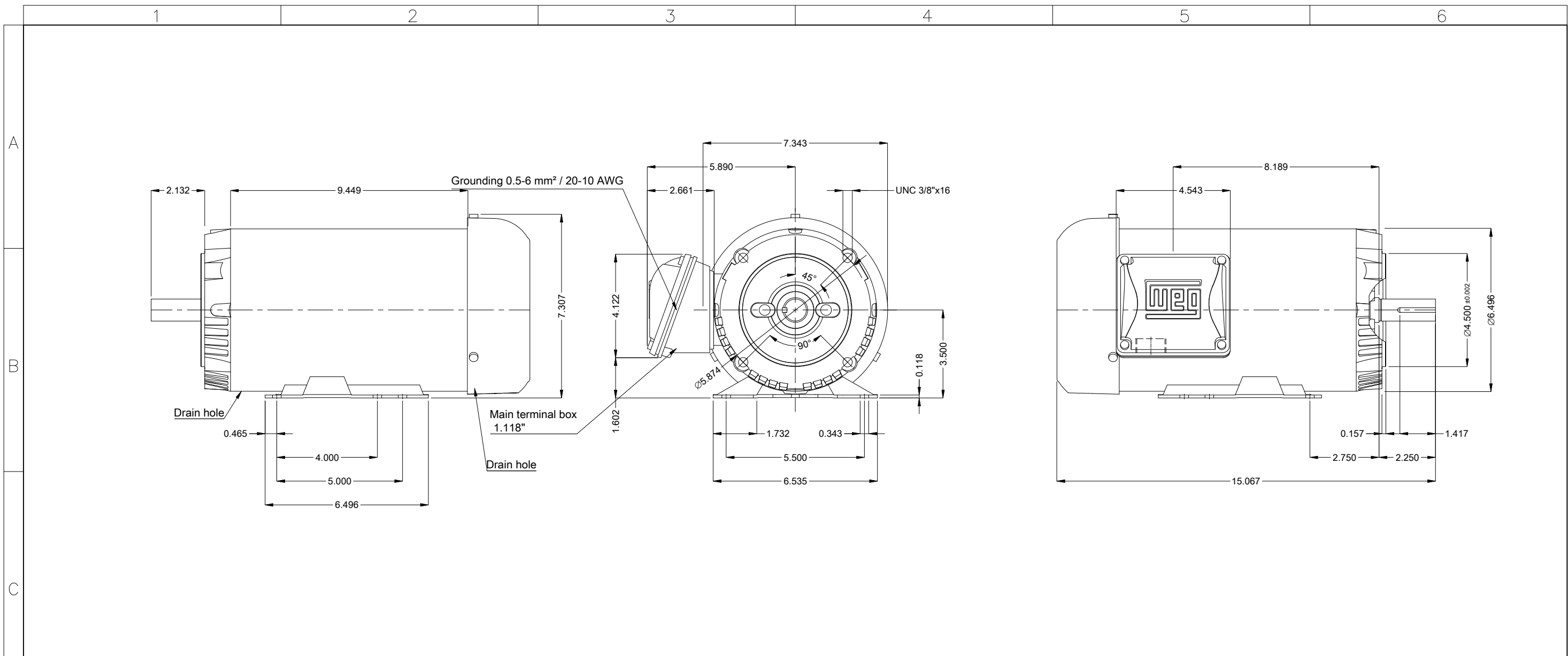
Customer :

Product line : Rolled Steel NEMA Premium  
Efficiency Three-Phase

Product code : 19222762



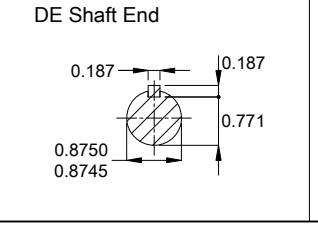
Rev.	Changes Summary	Performed	Checked	Date
Performed by			Page 2 / 2	Revision
Checked by				
Date 18/04/2026				



1  
2  
3  
4  
5  
6

A  
B  
C  
D  
E

- E Reinforce the foot with 2 mig welding spots
- Fan cover - steel plate
- Color Munsell N 1 matte black
- Painting plan 207N
- Mounting MARKET F-1/B34R(D)
- Mounting B34D



3 HP 02 Poles 60 Hz										A	
										Scale 1 : 4	
										HYBRISUSER	00
ECM	LOC	SUMMARY OF MODIFICATIONS					EXECUTED	CHECKED	RELEASED	DATE	VER
EXECUTED	HYBRISUSER	THREE PH. MOTOR ROLLED STEEL NEMA PREM. EFF.									
CHECKED		FRAME 143/5TC IP55 TEFC									
RELEASED											
REL. DATE											
						PREVIEW		WDD 00			
						SHEET 1 / 1					