

# DATA SHEET



## Three Phase Induction Motor - Squirrel Cage

Customer	:			
Product line	: Jet Pump - C type Three-Phase	Product code : 13722359		
Frame	: 56C	Cooling method : IC411 - TEFC		
Insulation class	: F	Mounting : W-6		
Duty cycle	: Cont.(S1)	Rotation <sup>1</sup> : CCW		
Ambient temperature	: -20°C to +40°C	Starting method : Direct On Line		
Altitude	: 1000 m.a.s.l.	Approx. weight <sup>3</sup> : 17.6 kg		
Protection degree	: IP55	Moment of inertia (J) : 0.0054 kgm <sup>2</sup>		
Design	: B			
Output [HP]		2		
Poles		2		
Frequency [Hz]		60		
Rated voltage [V]		575		
Rated current [A]		1.98		
L. R. Amperes [A]		19.6		
LRC [A]		9.9x(Code L)		
No load current [A]		0.850		
Rated speed [RPM]		3520		
Slip [%]		2.22		
Rated torque [kgfm]		0.412		
Locked rotor torque [%]		250		
Breakdown torque [%]		300		
Service factor		1.15		
Temperature rise		80 K		
Locked rotor time		23s (cold) 13s (hot)		
Noise level <sup>2</sup>		68.0 dB(A)		
Efficiency (%)	25%			
	50%	82.5		
	75%	85.5		
	100%	85.5		
Power Factor	25%			
	50%	0.73		
	75%	0.83		
	100%	0.89		
Bearing type	: <u>Drive end</u> 6203 2RS <u>Non drive end</u> 6202 2RS	Foundation loads		
Sealing	: V'Ring V'Ring	Max. traction : 31 kgf		
Lubrication interval	: - -	Max. compression : 48 kgf		
Lubricant amount	: - -			
Lubricant type	: Mobil Polyrex EM			
Notes				
<p>This revision replaces and cancel the previous one, which must be eliminated.</p> <p>(1) Looking the motor from the shaft end.</p> <p>(2) Measured at 1m and with tolerance of +3dB(A).</p> <p>(3) Approximate weight subject to changes after manufacturing process.</p> <p>(4) At 100% of full load.</p>		<p>These are average values based on tests with sinusoidal power supply, subject to the tolerances stipulated in NEMA MG-1.</p>		
Rev.	Changes Summary	Performed	Checked	Date
Performed by				
Checked by			Page	Revision
Date	17/05/2022		1 / 2	

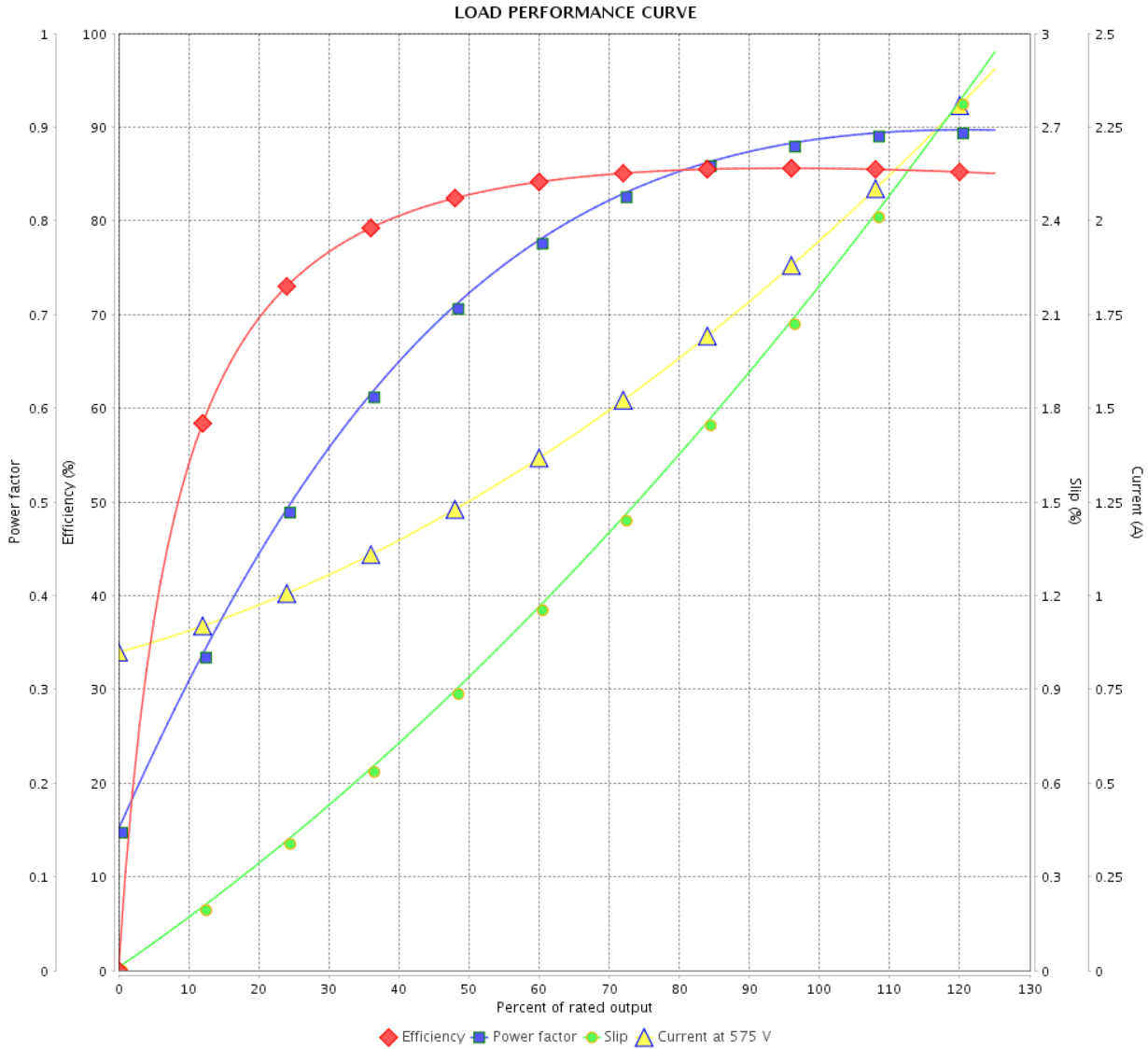
# LOAD PERFORMANCE CURVE

Three Phase Induction Motor - Squirrel Cage



Customer : \_\_\_\_\_

Product line : Jet Pump - C type Three-Phase      Product code : 13722359



Performance : 575 V 60 Hz 2P

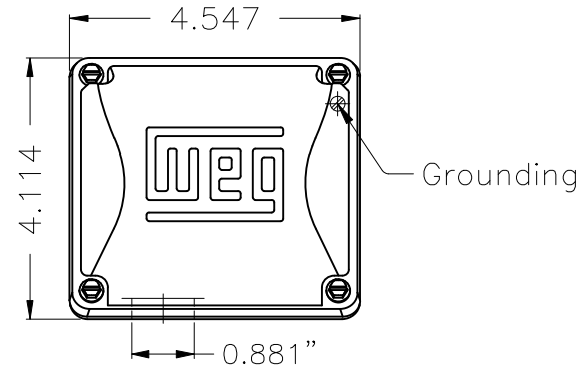
Rated current : 1.98 A  
 LRC : 9.9  
 Rated torque : 0.412 kgfm  
 Locked rotor torque : 250 %  
 Breakdown torque : 300 %  
 Rated speed : 3520 rpm

Moment of inertia (J) : 0.0054 kgm<sup>2</sup>  
 Duty cycle : Cont.(S1)  
 Insulation class : F  
 Service factor : 1.15  
 Temperature rise : 80 K  
 Design : B

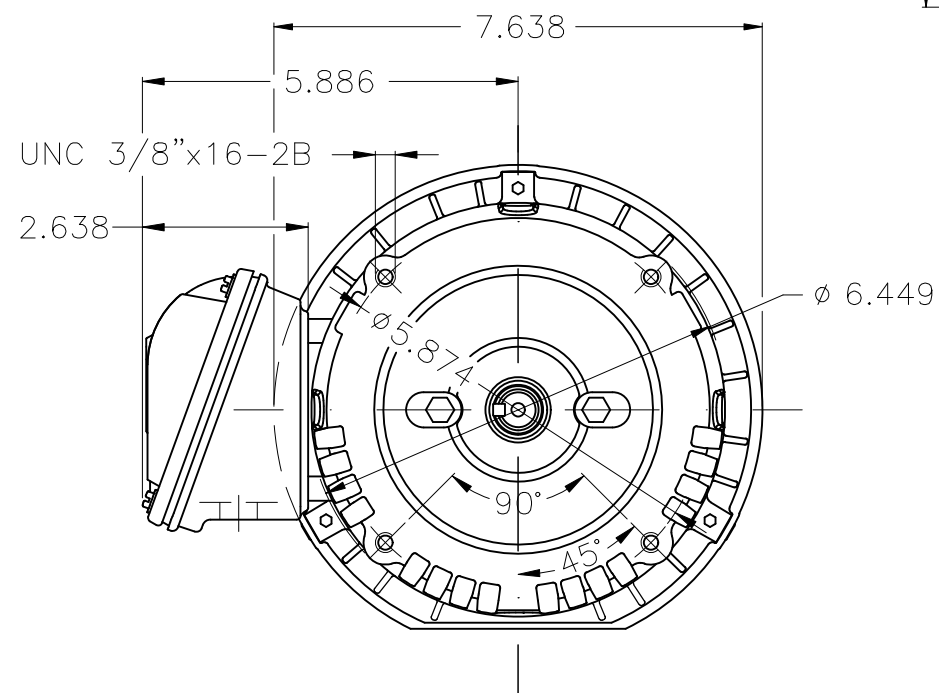
Rev.	Changes Summary	Performed	Checked	Date
Performed by			Page 2 / 2	Revision
Checked by				
Date	17/05/2022			

1 2 3 4 5 6

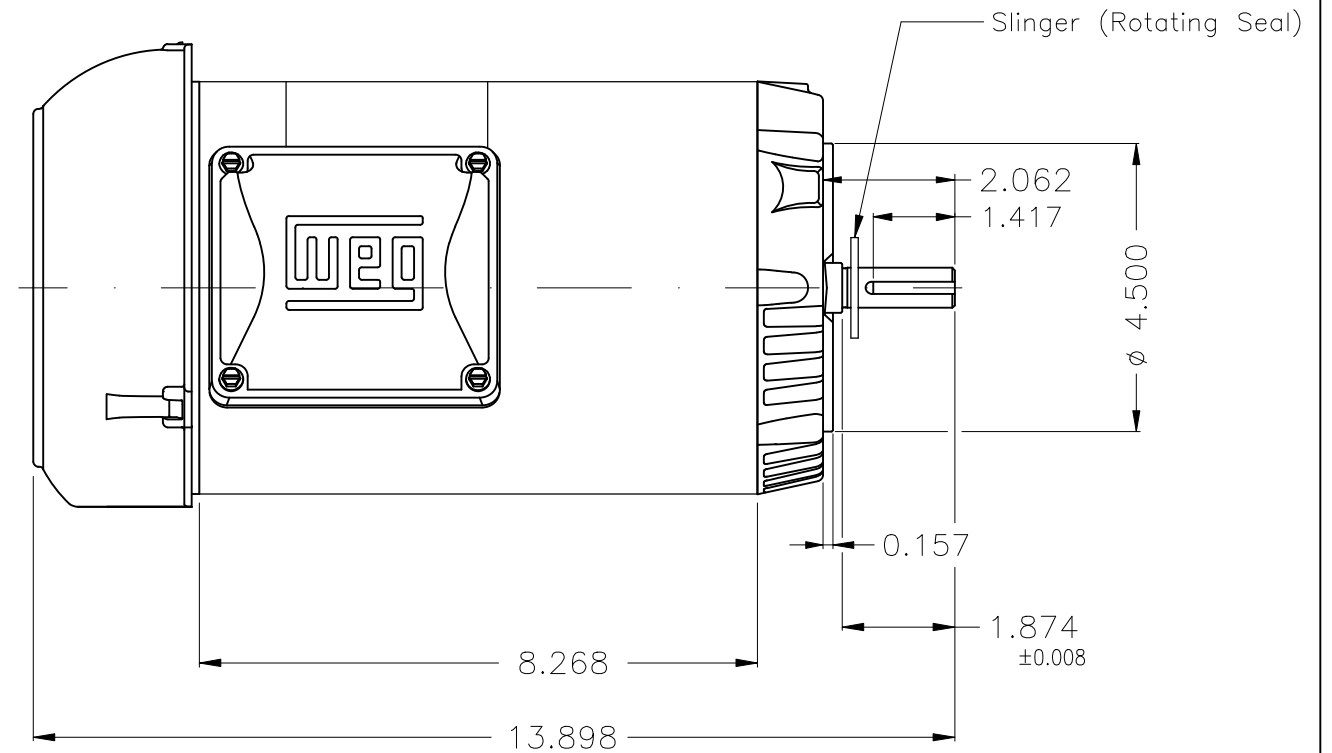
A



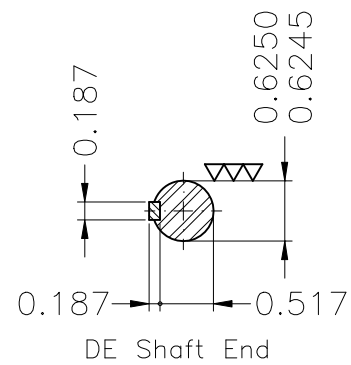
B



C



D



E

NDE sealing - V ring											
Color Munsell N 1 matte black											
Painting plan 207N											
Mounting W-6/V18R(D)											
							HYBRISUSER			00	
ECM	LOC	SUMMARY OF MODIFICATIONS					EXECUTED	CHECKED	RELEASED	DATE	VER
EXECUTED	HYBRISUSER	THREE PH. MOTOR ROLLED STEEL JET PUMP KEYED PREM. EFF.					EXECUTED				
CHECKED		FRAME 56C IP55 TEFC									
RELEASED											
REL. DATE	WMO	Jaragua do Sul	Product Engineering				WDD	00	PREVIEW		
SHEET 1 / 1							WEG				

2 HP 02 Poles 60 Hz

A