

# DATA SHEET



## Three Phase Induction Motor - Squirrel Cage

Customer :					
Product line		: Wjet Pump Three-Phase		Product code : 10812182	
Frame	: E56C		Locked rotor time	: 18s (cold) 10s (hot)	
Output	: 1 HP (0.75 kW)		Temperature rise	: 80 K	
Poles	: 2		Duty cycle	: Cont.(S1)	
Frequency	: 60 Hz		Ambient temperature	: -20°C to +40°C	
Rated voltage	: 575 V		Altitude	: 1000 m.a.s.l.	
Rated current	: 1.24 A		Protection degree	: IP21	
L. R. Amperes	: 8.06 A		Cooling method	: IC01 - ODP	
LRC	: 6.5x(Code K)		Mounting	: F-1	
No load current	: 0.760 A		Rotation <sup>1</sup>	: CCW	
Rated speed	: 3470 rpm		Starting method	: Direct On Line	
Slip	: 3.61 %		Approx. weight <sup>3</sup>	: 10.2 kg	
Rated torque	: 0.209 kgfm				
Locked rotor torque	: 260 %				
Breakdown torque	: 280 %				
Insulation class	: B				
Service factor	: 1.40				
Moment of inertia (J)	: 0.0012 kgm <sup>2</sup>				
Output	50%	75%	100%	Foundation loads	
Efficiency (%)	66.5	72.0	74.0	Max. traction : 13 kgf	
Power Factor	0.62	0.73	0.81	Max. compression : 24 kgf	
		<u>Drive end</u>		<u>Non drive end</u>	
Bearing type	:	6203 2RS		6203 2RS	
Sealing	:	Slinger		Without Bearing Seal	
Lubrication interval	:	-		-	
Lubricant amount	:	-		-	
Lubricant type	:	Mobil Polyrex EM			
Notes					
This revision replaces and cancel the previous one, which must be eliminated. (1) Looking the motor from the shaft end. (2) Measured at 1m and with tolerance of +3dB(A). (3) Approximate weight subject to changes after manufacturing process. (4) At 100% of full load.			These are average values based on tests with sinusoidal power supply, subject to the tolerances stipulated in NEMA MG-1.		
Rev.	Changes Summary		Performed	Checked	Date
Performed by					
Checked by				Page	Revision
Date	24/10/2024			1 / 2	

# LOAD PERFORMANCE CURVE

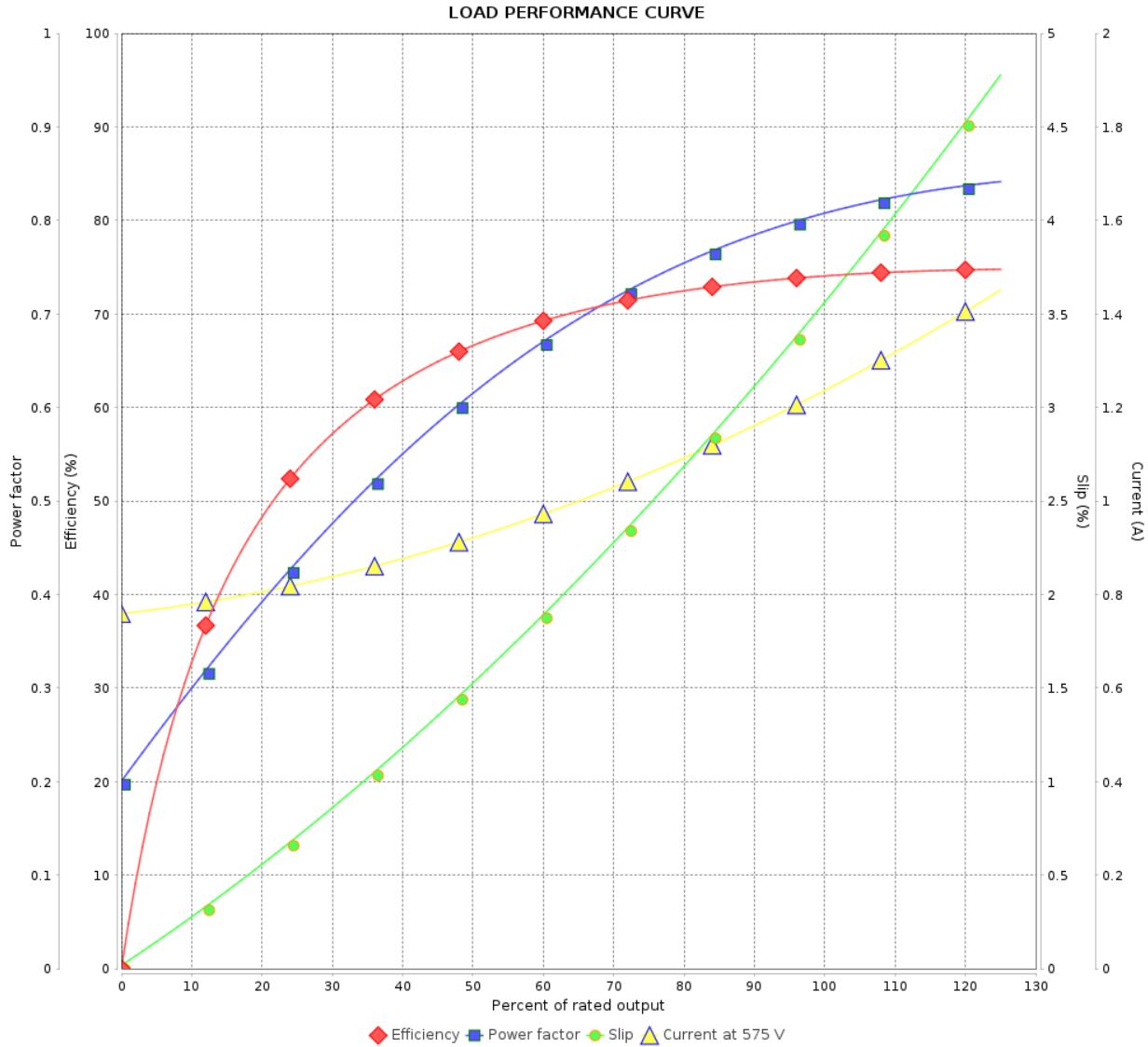
Three Phase Induction Motor - Squirrel Cage



Customer :

Product line : Wjet Pump Three-Phase

Product code : 10812182



Performance : 575 V 60 Hz 2P

Rated current : 1.24 A  
 LRC : 6.5  
 Rated torque : 0.209 kgfm  
 Locked rotor torque : 260 %  
 Breakdown torque : 280 %  
 Rated speed : 3470 rpm

Moment of inertia (J) : 0.0012 kgm<sup>2</sup>  
 Duty cycle : Cont.(S1)  
 Insulation class : B  
 Service factor : 1.40  
 Temperature rise : 80 K

Rev.	Changes Summary	Performed	Checked	Date
Performed by			Page 2 / 2	Revision
Checked by				
Date	24/10/2024			

1

2

3

4

5

6

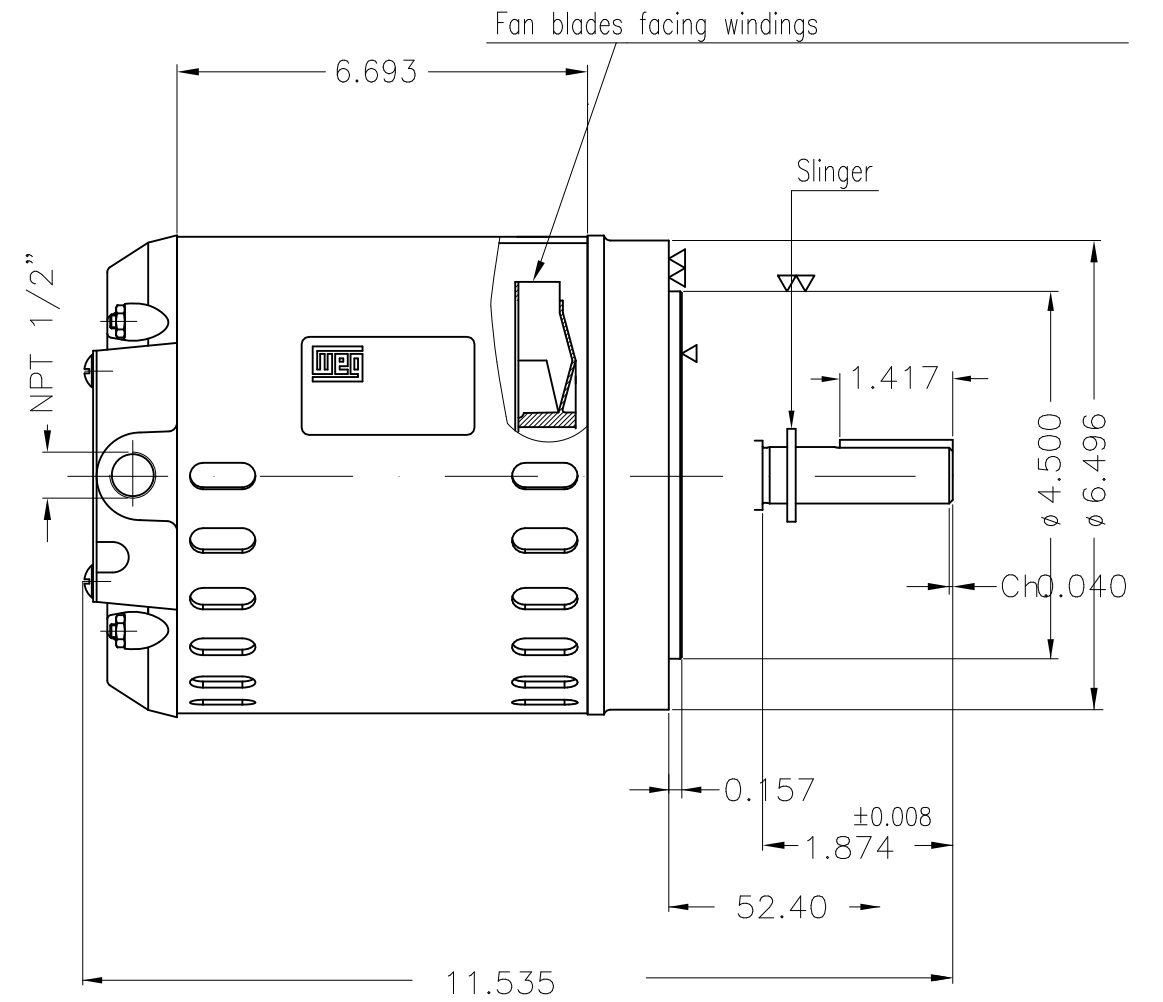
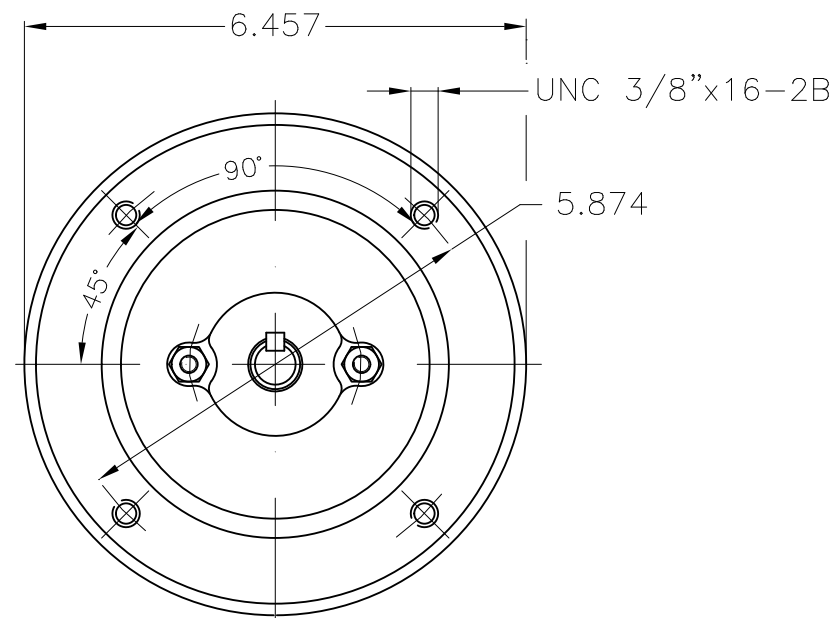
A

B

C

D

E



Without switch off thermal protection

Mounting B14R(D)

ECM	LOC	SUMMARY OF MODIFICATIONS				HYBRISUSER	DATE	VER
EXECUTED	HYBRISUSER	THREE PH. MOTOR WJET PUMP				00		
CHECKED		FRAME E56C IP21 ODP						
RELEASED								
REL. DATE	WMO	Jaragua do Sul	Product Engineering	SHEET	1 / 1			

1 HP 02 Poles 60 Hz

A

PREVIEW

WDD 00



Dimensions in inches

XME A3