

# DATA SHEET



## Three Phase Induction Motor - Squirrel Cage

Customer :				
Product line	: Jet Pump - J type Premium Efficiency Three-Phase	Product code :	15942864	
Frame	: W56J	Cooling method	: IC411 - TEFC	
Insulation class	: F	Mounting	: W-6	
Duty cycle	: Cont.(S1)	Rotation <sup>1</sup>	: CCW	
Ambient temperature	: -20°C to +40°C	Starting method	: Direct On Line	
Altitude	: 1000 m.a.s.l.	Approx. weight <sup>2</sup>	: 9.5 kg	
Protection degree	: IP55	Moment of inertia (J)	: 0.0011 kgm <sup>2</sup>	
Output [HP]	1	1	1	
Poles	2	2	2	
Frequency [Hz]	60	50	50	
Rated voltage [V]	230/460	190-220/380	415	
Rated current [A]	3.00/1.50	3.40-2.94/1.70	1.65	
L. R. Amperes [A]	26.4/13.2	22.1-19.1/11.0	12.4	
LRC [A]	8.8x(Code M)	6.5x(Code J)	7.5x(Code K)	
No load current [A]	1.60/0.798	1.56-1.35/0.781	0.949	
Rated speed [RPM]	3435	2770	2815	
Slip [%]	4.58	7.67	6.17	
Rated torque [kgfm]	0.211	0.262	0.258	
Locked rotor torque [%]	360	280	330	
Breakdown torque [%]	380	250	310	
Service factor		1.15	1.15	
Temperature rise	80 K	80 K	80 K	
Locked rotor time	18s (cold) 10s (hot)	16s (cold) 9s (hot)	14s (cold) 8s (hot)	
Noise level <sup>2</sup>	65.0 dB(A)	64.0 dB(A)	64.0 dB(A)	
Efficiency (%)	25%			
	50%	74.0	75.9	
	75%	77.0	78.9	
	100%	78.5	79.0	
Power Factor	25%			
	50%	0.63	0.61	
	75%	0.75	0.74	
	100%	0.80	0.80	
Bearing type	: <u>Drive end</u> 6203 2RS <u>Non drive end</u> 6202 2RS	Foundation loads		
Sealing	: V'Ring V'Ring	Max. traction	: 21 kgf	
Lubrication interval	: - -	Max. compression	: 30 kgf	
Lubricant amount	: - -			
Lubricant type	: Mobil Polyrex EM			
Notes USABLE @208V 3.32A SF 1.00 SFA 3.32A				
This revision replaces and cancel the previous one, which must be eliminated. (1) Looking the motor from the shaft end. (2) Measured at 1m and with tolerance of +3dB(A). (3) Approximate weight subject to changes after manufacturing process. (4) At 100% of full load.		These are average values based on tests with sinusoidal power supply, subject to the tolerances stipulated in NEMA MG-1.		
Rev.	Changes Summary	Performed	Checked	Date
Performed by				
Checked by			Page	Revision
Date	16/05/2022		1 / 4	

# LOAD PERFORMANCE CURVE

Three Phase Induction Motor - Squirrel Cage

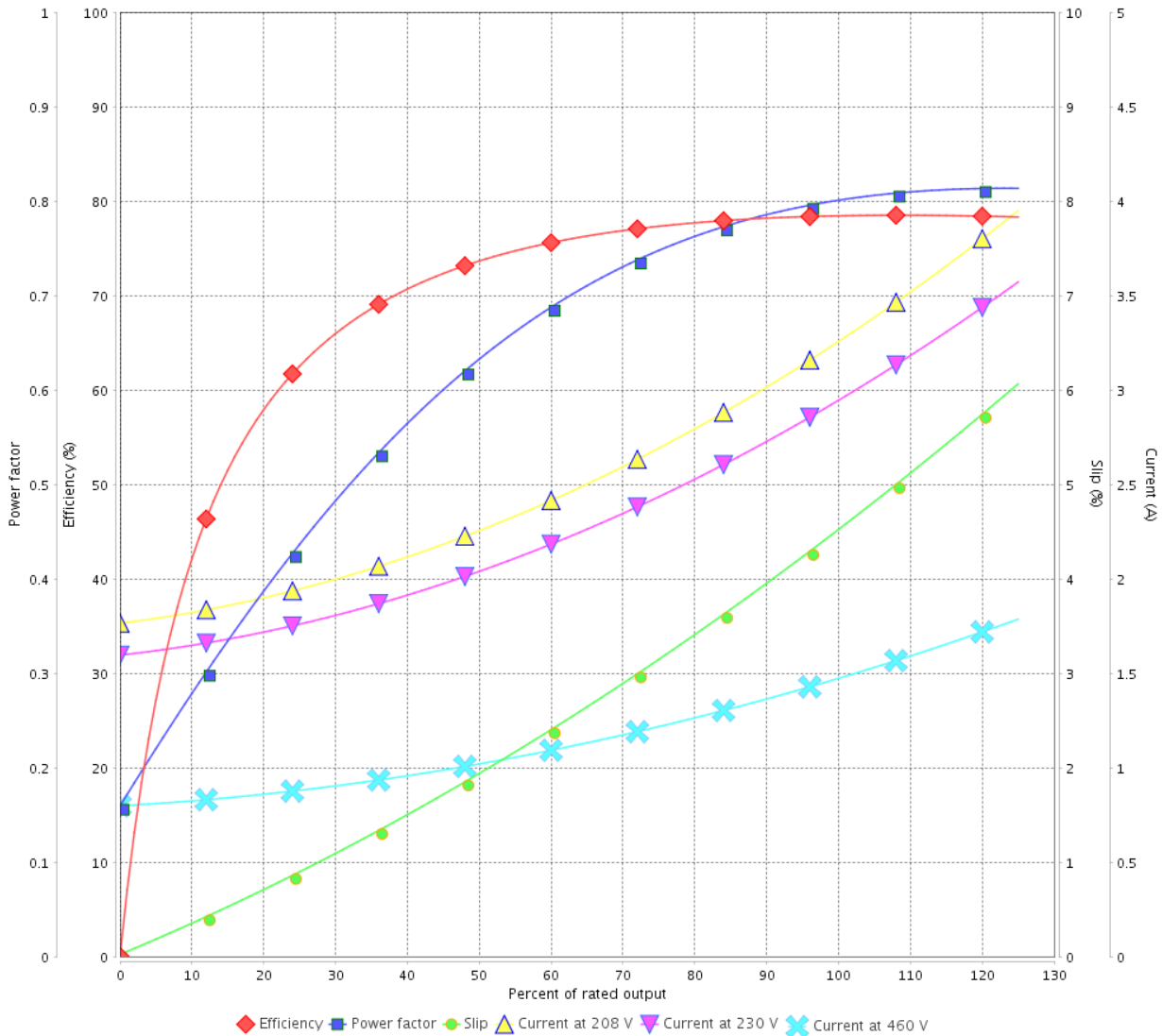


Customer :

Product line : Jet Pump - J type Premium  
Efficiency Three-Phase

Product code : 15942864

LOAD PERFORMANCE CURVE



Performance : 230/460 V 60 Hz 2P

Rated current : 3.00/1.50 A  
 LRC : 8.8  
 Rated torque : 0.211 kgfm  
 Locked rotor torque : 360 %  
 Breakdown torque : 380 %  
 Rated speed : 3435 rpm

Moment of inertia (J) : 0.0011 kgm<sup>2</sup>  
 Duty cycle : Cont.(S1)  
 Insulation class : F  
 Service factor :  
 Temperature rise : 80 K

Rev.	Changes Summary	Performed	Checked	Date
Performed by	16/05/2022		Page 2 / 4	Revision
Checked by				
Date				

# LOAD PERFORMANCE CURVE

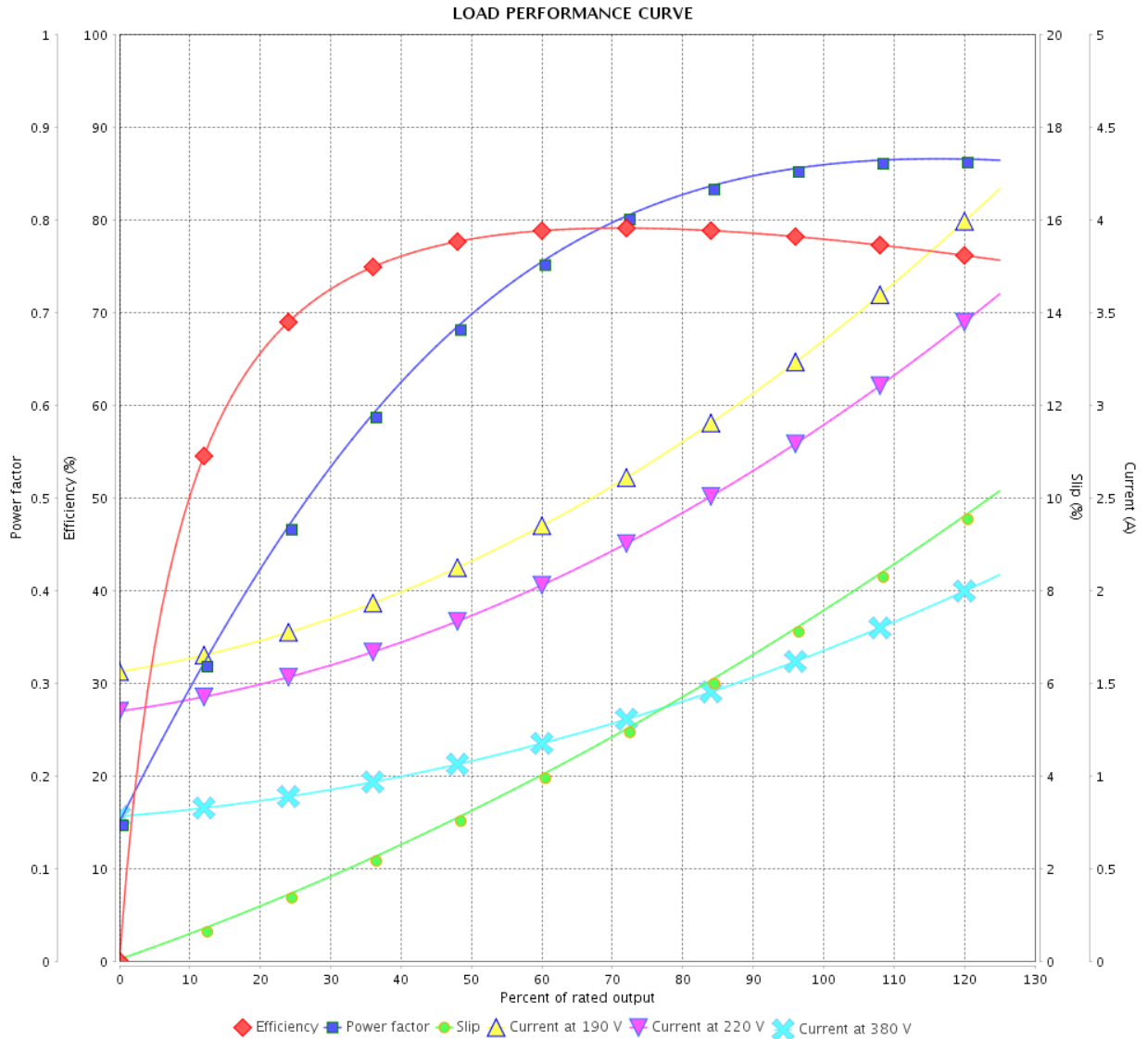
## Three Phase Induction Motor - Squirrel Cage



Customer :

Product line : Jet Pump - J type Premium  
Efficiency Three-Phase

Product code : 15942864



Performance : 190-220/380 V 50 Hz 2P

Rated current : 3.40-2.94/1.70 A  
 LRC : 6.5  
 Rated torque : 0.262 kgfm  
 Locked rotor torque : 280 %  
 Breakdown torque : 250 %  
 Rated speed : 2770 rpm

Moment of inertia (J) : 0.0011 kgm<sup>2</sup>  
 Duty cycle : Cont.(S1)  
 Insulation class : F  
 Service factor : 1.15  
 Temperature rise : 80 K

Rev.	Changes Summary	Performed	Checked	Date
Performed by			Page	Revision
Checked by				
Date				

# LOAD PERFORMANCE CURVE

Three Phase Induction Motor - Squirrel Cage

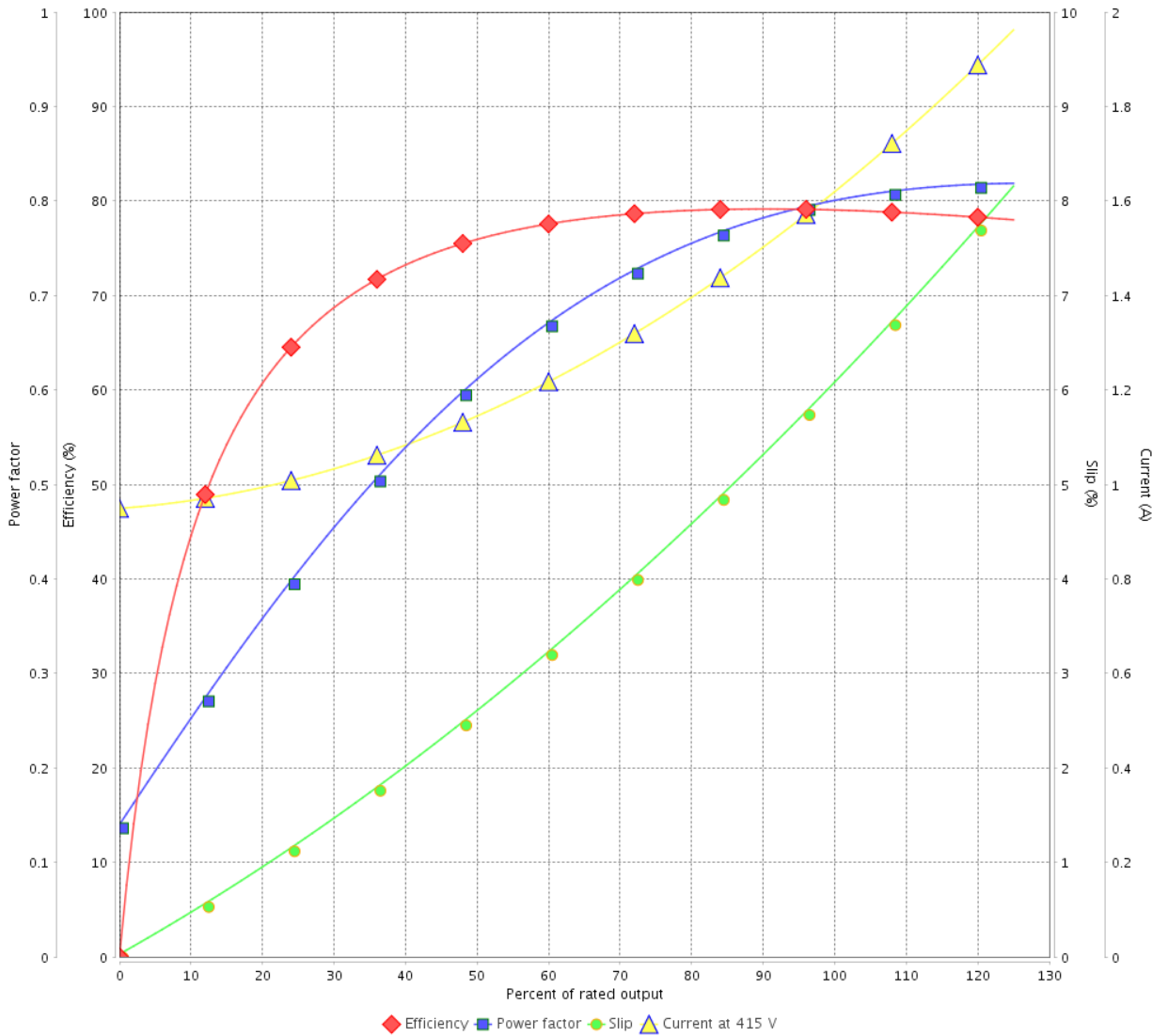


Customer :

Product line : Jet Pump - J type Premium  
Efficiency Three-Phase

Product code : 15942864

LOAD PERFORMANCE CURVE



Performance : 415 V 50 Hz 2P

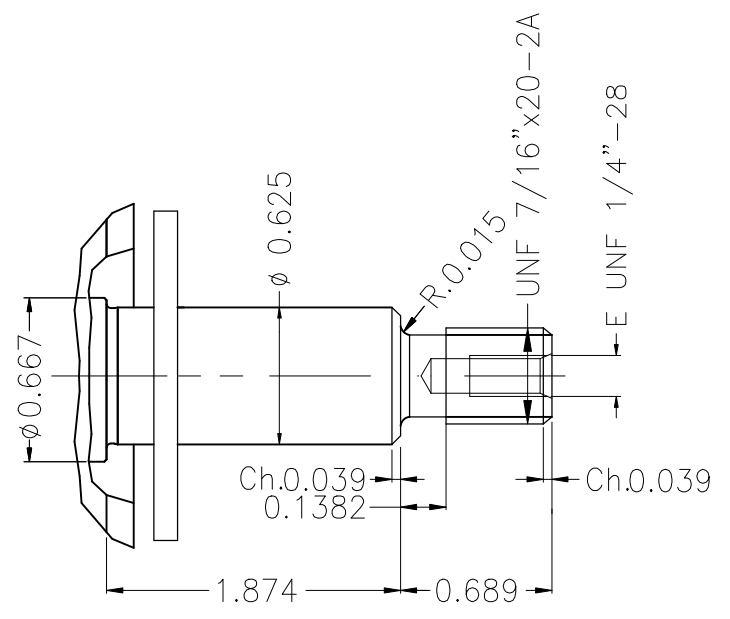
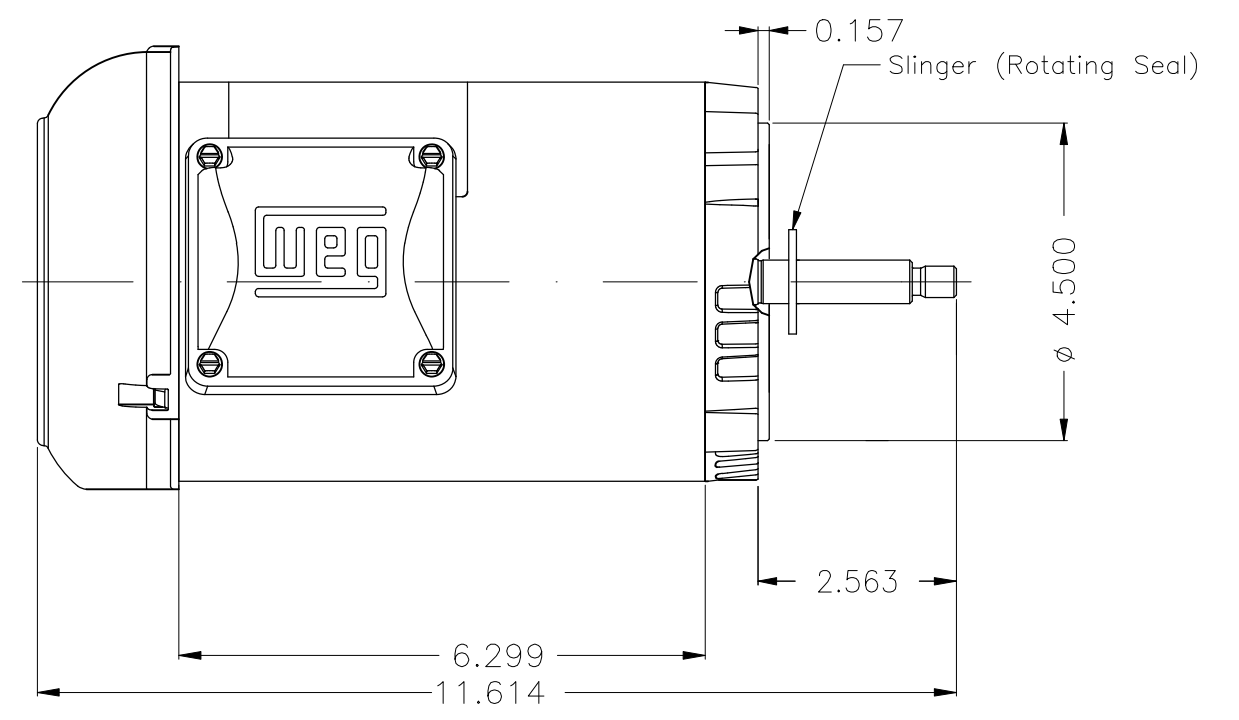
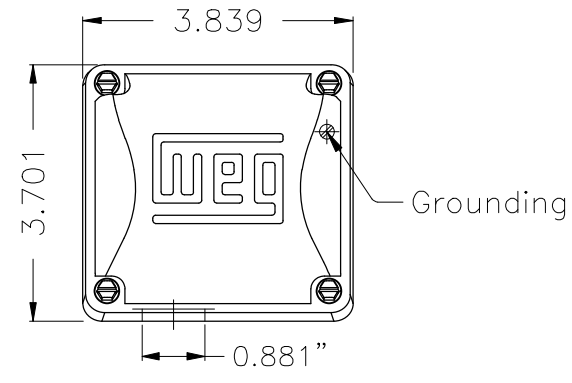
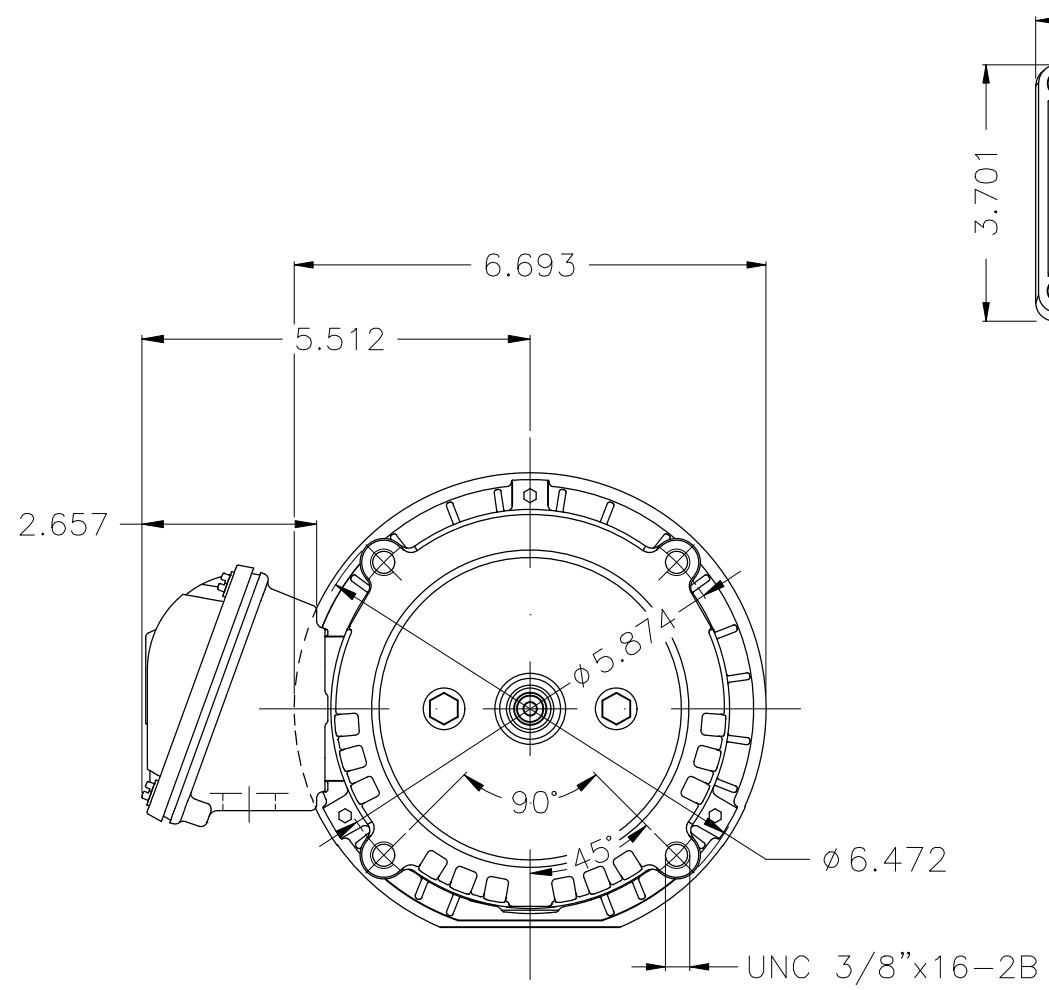
Rated current : 1.65 A  
LRC : 7.5  
Rated torque : 0.258 kgfm  
Locked rotor torque : 330 %  
Breakdown torque : 310 %  
Rated speed : 2815 rpm

Moment of inertia (J) : 0.0011 kgm<sup>2</sup>  
Duty cycle : Cont.(S1)  
Insulation class : F  
Service factor : 1.15  
Temperature rise : 80 K

Rev.	Changes Summary	Performed	Checked	Date
Performed by			Page	Revision
Checked by				
Date				

1 2 3 4 5 6

A  
B  
C  
D  
E



NDE sealing - V ring						
Color Munsell N 1 matte black						
Painting plan 207N						
Mounting W-6/V18R(D)						
					HYBRISUSER	00
ECM	LOC	SUMMARY OF MODIFICATIONS		EXECUTED	CHECKED	RELEASED DATE VER
EXECUTED	HYBRISUSER	THREE PH. MOTOR ROLLED STEEL JET PUMP THREADED PREL. FEEL				
CHECKED		FRAME W56J IP55 TEFC				
RELEASED						
REL. DATE	WMO	Jaragua do Sul	Product Engineering	WDD	00	
				SHEET	1 / 1	

1 HP 02 Poles 60 Hz

A

Dimensions in inches XME A3

