

DATA SHEET

Three Phase Induction Motor - Squirrel Cage



Customer :

Product line : W22 NEMA Premium Efficiency Three-Phase Product code : 11456826

Frame : 182/4TC	Cooling method : IC411 - TEFC
Insulation class : F	Mounting : F-1
Duty cycle : Cont.(S1)	Rotation ¹ : Both (CW and CCW)
Ambient temperature : -20°C to +40°C	Starting method : Direct On Line
Altitude : 1000 m.a.s.l.	Approx. weight ³ : 46.8 kg
Protection degree : IP55	Moment of inertia (J) : 0.0262 kgm ²
Design : B	

Output [HP]	2	2	2	2
Poles	6	6	6	6
Frequency [Hz]	60	50	50	50
Rated voltage [V]	230/460	380	400	415
Rated current [A]	6.44/3.22	3.66	3.61	3.58
L. R. Amperes [A]	48.3/24.2	22.0	24.2	25.4
LRC [A]	7.5x(Code L)	6.0x(Code J)	6.7x(Code K)	7.1x(Code L)
No load current [A]	3.80/1.90	1.90	2.05	2.15
Rated speed [RPM]	1165	960	965	965
Slip [%]	2.92	4.00	3.50	3.50
Rated torque [kgfm]	1.25	1.51	1.50	1.50
Locked rotor torque [%]	300	229	280	310
Breakdown torque [%]	350	260	290	330
Service factor	1.25	1.00	1.00	1.00
Temperature rise	80 K	80 K	80 K	80 K
Locked rotor time	55s (cold) 31s (hot)	36s (cold) 20s (hot)	36s (cold) 20s (hot)	36s (cold) 20s (hot)
Noise level ²	52.0 dB(A)	49.0 dB(A)	49.0 dB(A)	49.0 dB(A)
Efficiency (%)	25%			
	50%	85.5	85.5	85.0
	75%	87.5	86.0	86.5
	100%	88.5	86.5	87.0
Power Factor	25%			
	50%	0.46	0.53	0.46
	75%	0.58	0.65	0.59
	100%	0.66	0.72	0.67

Losses at normative operating points (speed;torque), in percentage of rated output power

Losses (%)	P1 (0,9;1,0)	13.7	14.1	13.8	14.2
	P2 (0,5;1,0)	11.8	12.1	11.9	12.3
	P3 (0,25;1,0)	11.8	12.1	11.9	12.2
	P4 (0,9;0,5)	7.6	7.8	7.7	7.9
	P5 (0,5;0,5)	5.7	5.8	5.7	5.9
	P6 (0,5;0,25)	4.3	4.4	4.4	4.5
	P7 (0,25;0,25)	3.4	3.5	3.4	3.5

	<u>Drive end</u>	<u>Non drive end</u>	Foundation loads
Bearing type :	6207 ZZ	6206 ZZ	Max. traction : 80 kgf
Sealing :	V'Ring	V'Ring	Max. compression : 127 kgf
Lubrication interval :	-	-	
Lubricant amount :	-	-	
Lubricant type :	Mobil Polyrex EM		

This revision replaces and cancel the previous one, which must be eliminated.
 (1) Looking the motor from the shaft end.
 (2) Measured at 1m and with tolerance of +3dB(A).
 (3) Approximate weight subject to changes after manufacturing process.

These are average values based on tests with sinusoidal power supply, subject to the tolerances stipulated in NEMA MG-1.

Rev.	Changes Summary	Performed	Checked	Date
Performed by				
Checked by				
Date	11/05/2025		Page 1 / 6	Revision

DATA SHEET

Three Phase Induction Motor - Squirrel Cage



Customer :

Notes
USABLE @208V 7.13A SF 1.15 SFA 8.20A

Rev.	Changes Summary		Performed	Checked	Date
Performed by			Page		Revision
Checked by					
Date	11/05/2025				

LOAD PERFORMANCE CURVE

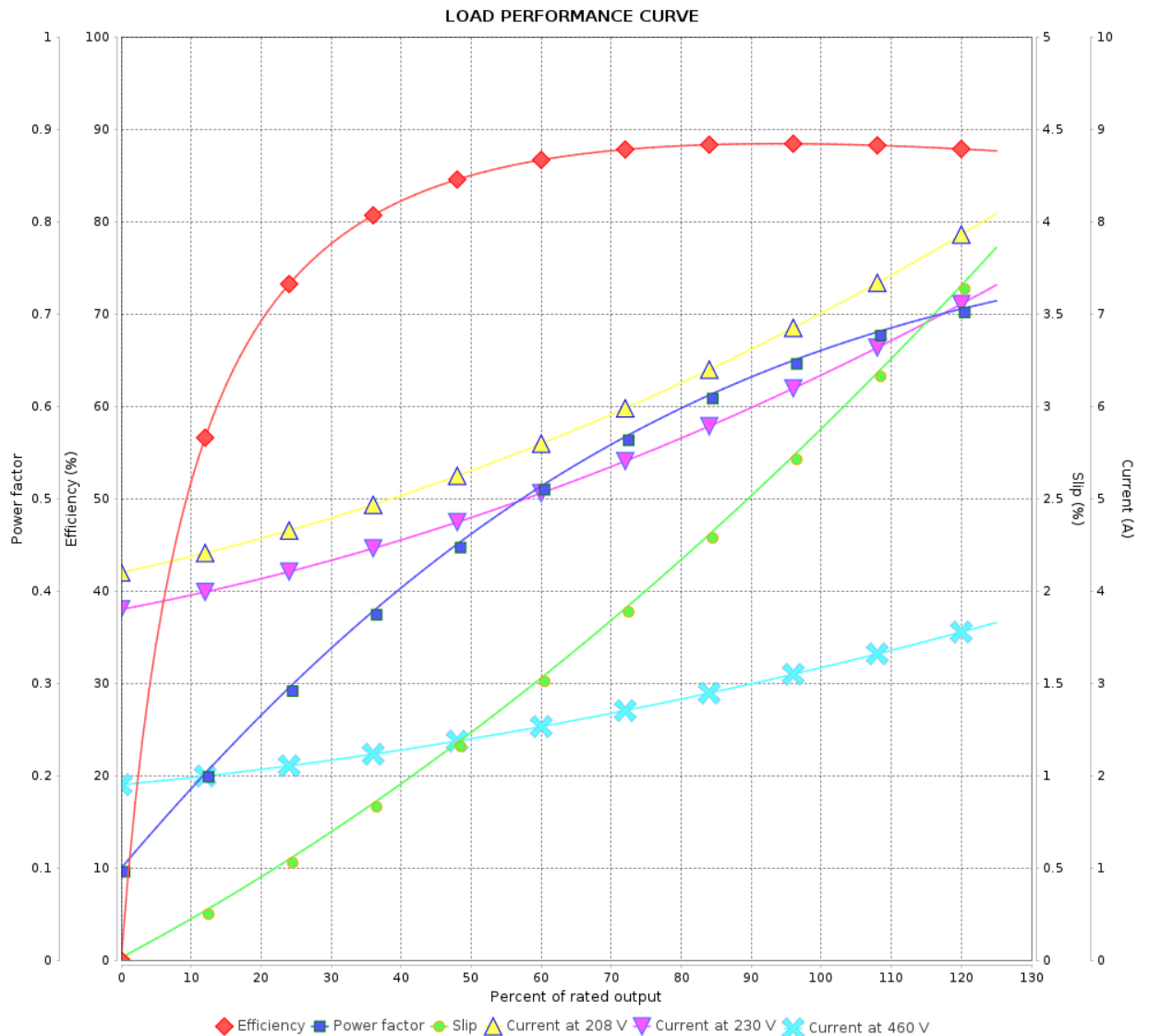
Three Phase Induction Motor - Squirrel Cage



Customer :

Product line : W22 NEMA Premium Efficiency
Three-Phase

Product code : 11456826



Performance : 230/460 V 60 Hz 6P

Rated current : 6.44/3.22 A
LRC : 7.5
Rated torque : 1.25 kgfm
Locked rotor torque : 300 %
Breakdown torque : 350 %
Rated speed : 1165 rpm

Moment of inertia (J) : 0.0262 kgm²
Duty cycle : Cont.(S1)
Insulation class : F
Service factor : 1.25
Temperature rise : 80 K
Design : B

Rev.	Changes Summary	Performed	Checked	Date
Performed by		Page 3 / 6Revision		
Checked by				
Date	11/05/2025			

LOAD PERFORMANCE CURVE

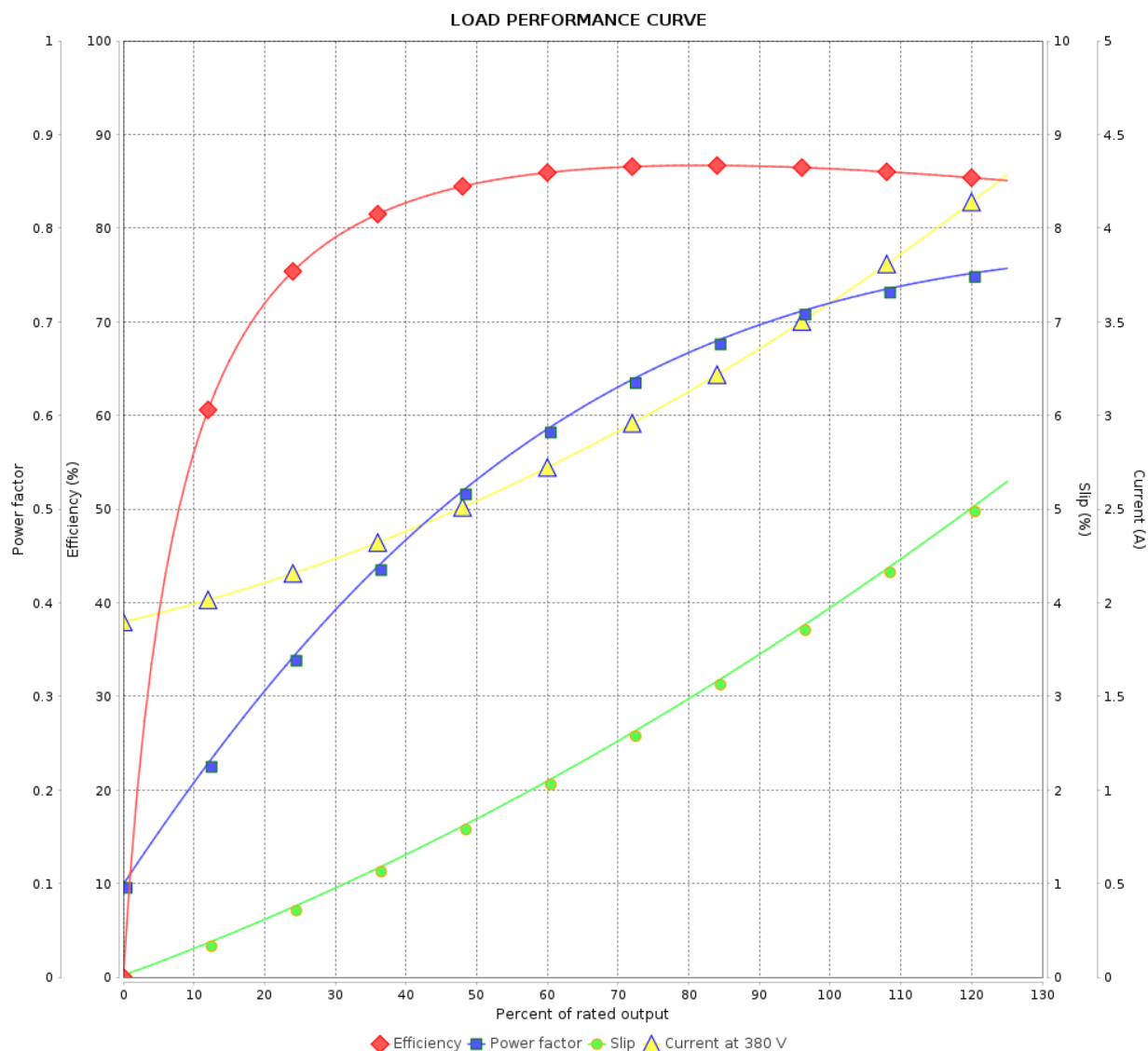
Three Phase Induction Motor - Squirrel Cage



Customer :

Product line : W22 NEMA Premium Efficiency
Three-Phase

Product code : 11456826



Performance : 380 V 50 Hz 6P IE4

Rated current : 3.66 A
LRC : 6.0
Rated torque : 1.51 kgfm
Locked rotor torque : 229 %
Breakdown torque : 260 %
Rated speed : 960 rpm

Moment of inertia (J) : 0.0262 kgm²
Duty cycle : Cont.(S1)
Insulation class : F
Service factor : 1.00
Temperature rise : 80 K
Design : B

Rev.	Changes Summary		Performed	Checked	Date
Performed by				Page	Revision
Checked by				4 / 6	
Date					
	11/05/2025				

LOAD PERFORMANCE CURVE

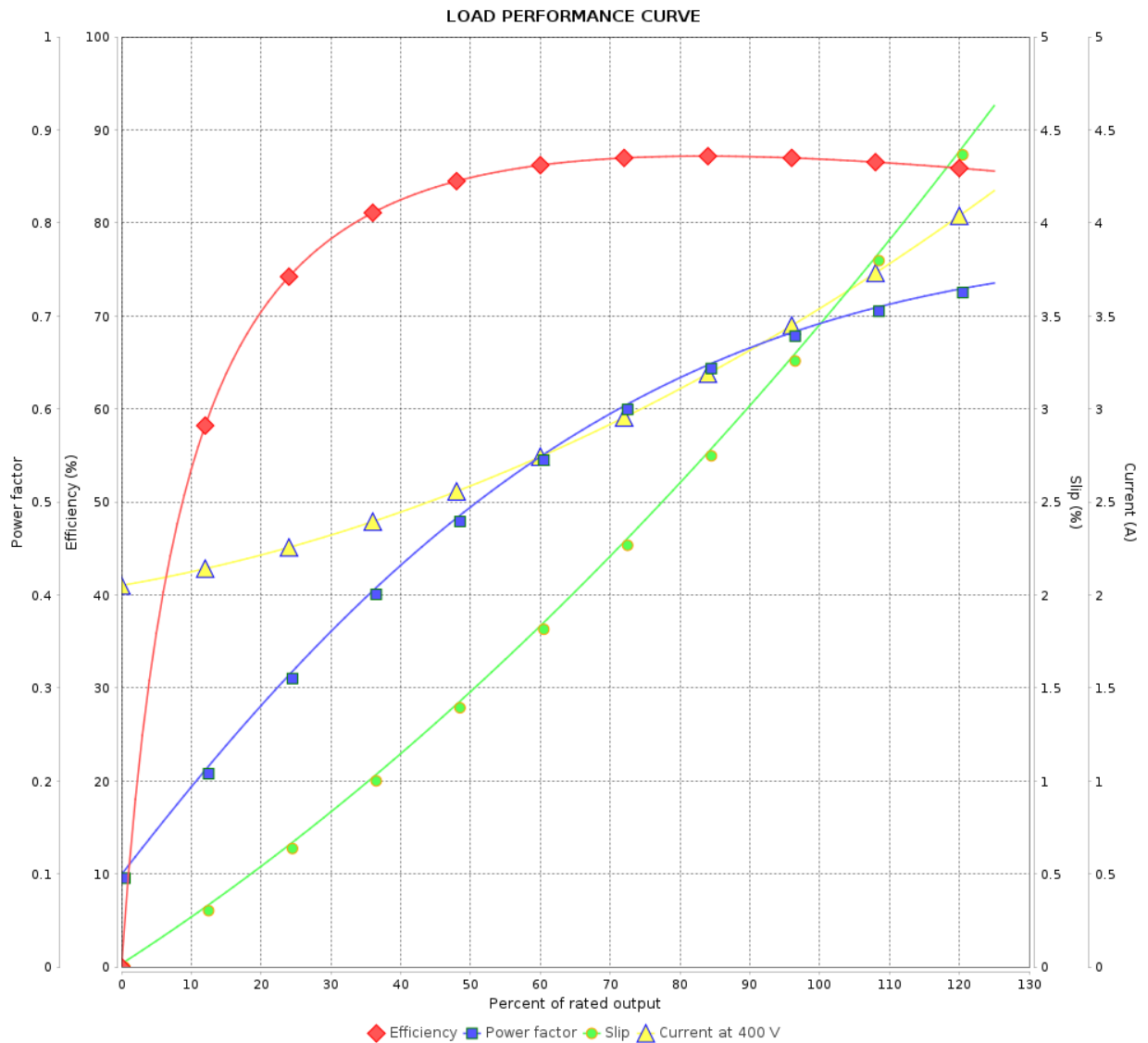
Three Phase Induction Motor - Squirrel Cage



Customer :

Product line : W22 NEMA Premium Efficiency
Three-Phase

Product code : 11456826



Performance : 400 V 50 Hz 6P IE4

Rated current	: 3.61 A	Moment of inertia (J)	: 0.0262 kgm ²
LRC	: 6.7	Duty cycle	: Cont.(S1)
Rated torque	: 1.50 kgfm	Insulation class	: F
Locked rotor torque	: 280 %	Service factor	: 1.00
Breakdown torque	: 290 %	Temperature rise	: 80 K
Rated speed	: 965 rpm	Design	: B

Rev.	Changes Summary	Performed	Checked	Date
Performed by		Page 5 / 6 Revision		
Checked by				
Date	11/05/2025			

LOAD PERFORMANCE CURVE

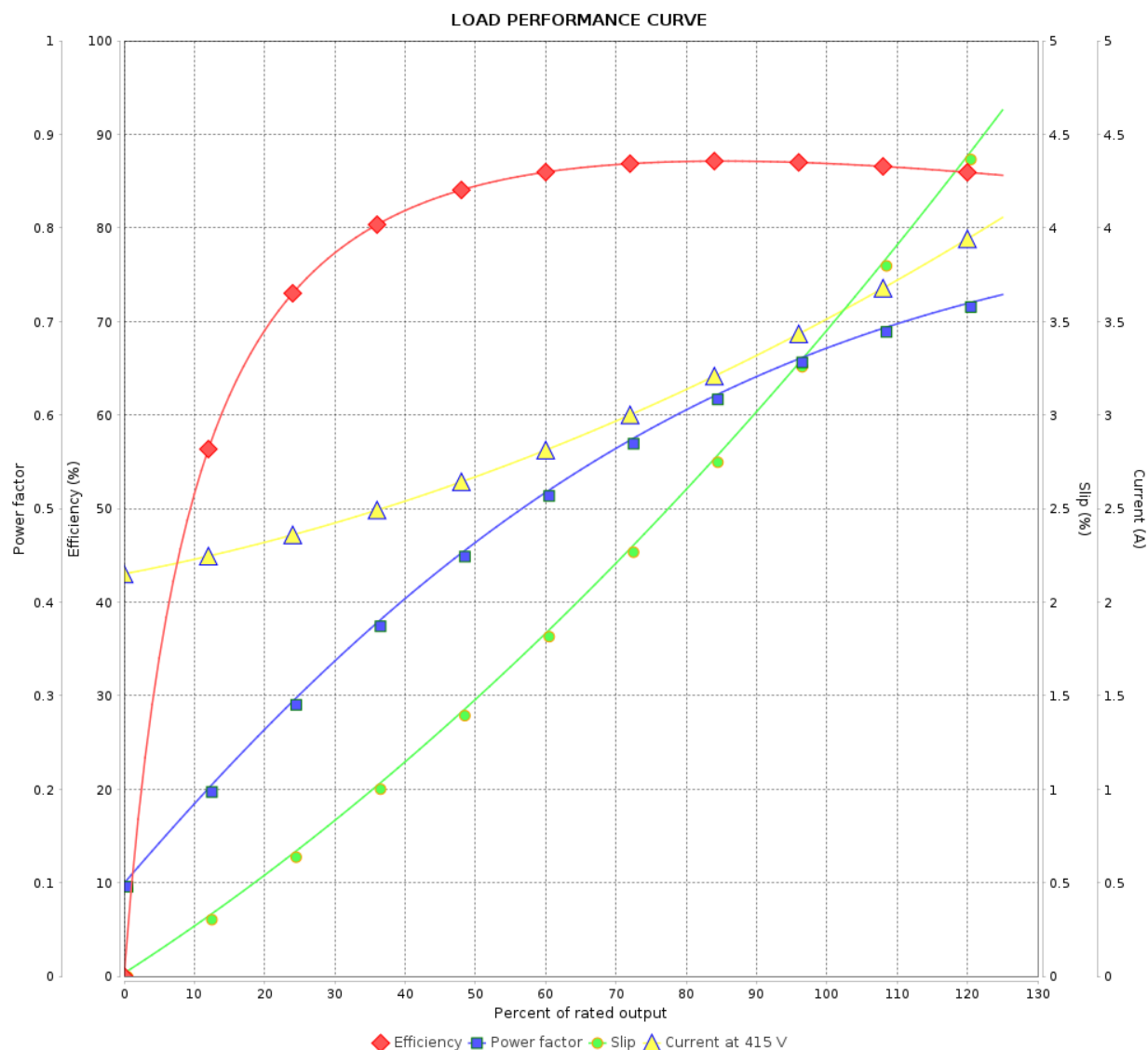
Three Phase Induction Motor - Squirrel Cage



Customer :

Product line : W22 NEMA Premium Efficiency
Three-Phase

Product code : 11456826

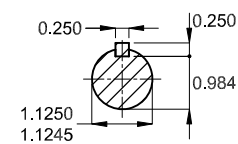
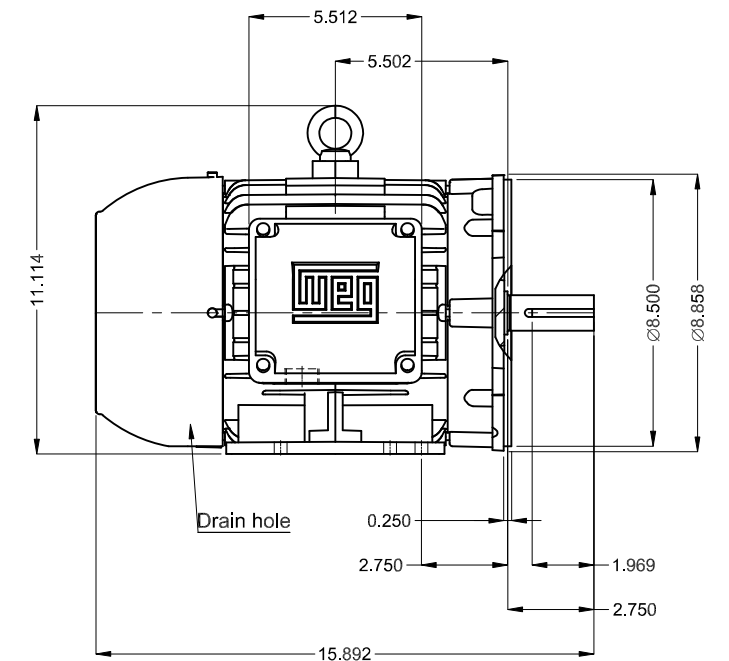
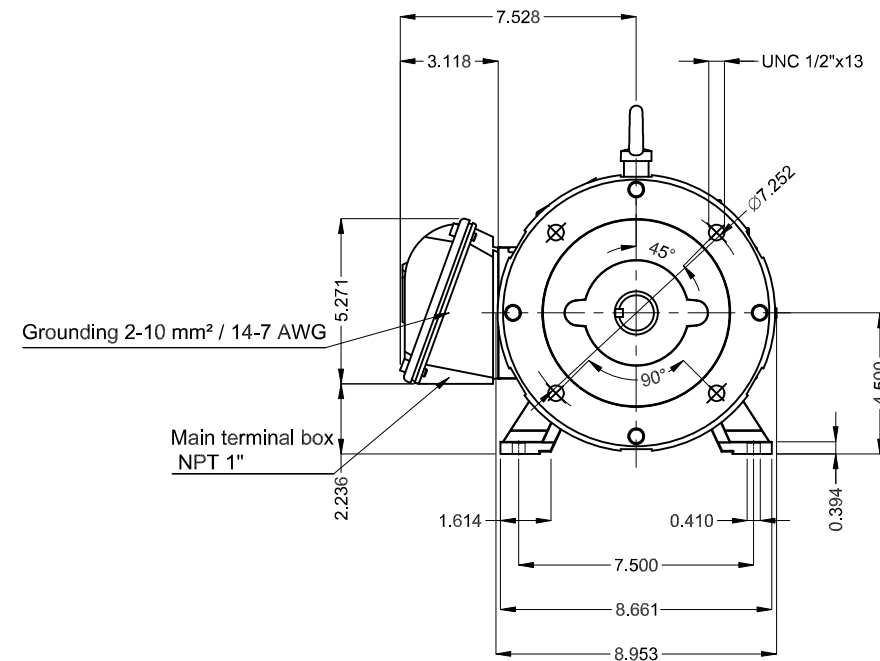
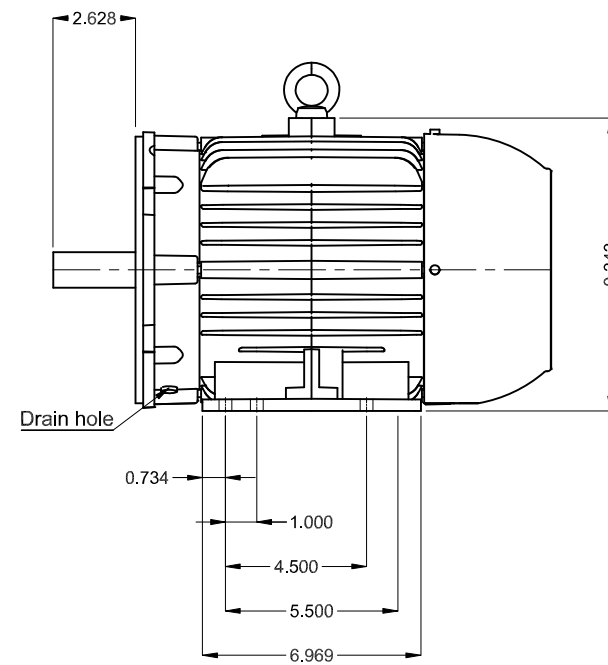


Performance : 415 V 50 Hz 6P IE4



Rated current : 3.58 A
LRC : 7.1
Rated torque : 1.50 kgfm
Locked rotor torque : 310 %
Breakdown torque : 330 %
Rated speed : 965 rpm

Moment of inertia (J) : 0.0262 kgm²
Duty cycle : Cont.(S1)
Insulation class : F
Service factor : 1.00
Temperature rise : 80 K
Design : B

Rev.	Changes Summary		Performed	Checked	Date
Performed by				Page 6 / 6	Revision
Checked by					
Date	11/05/2025				



Color RAL 5009
Painting plan 207A
Mounting B34D

2 HP 06 Poles 60 Hz										A
						Scale 1 : 6				
						HYBRISUSER				00
ECM	LOC	SUMMARY OF MODIFICATIONS				EXECUTED	CHECKED	RELEASED	DATE	VER
EXECUTED	HYBRISUSER		THREE PH. MOTOR W22 NEMA PREM. EFF. FRAME 182/4TC IP55 TEFC				PREVIEW WDD 00			
CHECKED										
RELEASED										
REL. DATE										
						SHEET		1 / 1		