

DATA SHEET

Single Phase Induction Motor - Squirrel Cage



Customer :

Product line : Centrifugal Pump Single-Phase Product code : 10504701
Start Capacitor

Frame	: D56J	Locked rotor time	: 10s (cold) 6s (hot)
Output	: 1 HP (0.75 kW)	Temperature rise	: 80 K
Poles	: 2	Duty cycle	: Cont.(S1)
Frequency	: 60 Hz	Ambient temperature	: -20°C to +40°C
Rated voltage	: 115/208-230 V	Altitude	: 1000 m.a.s.l.
Rated current	: 12.8/6.40-6.40 A	Protection degree	: IP55
L. R. Amperes	: 89.6/44.8-44.8 A	Cooling method	: IC411 - TEFC
LRC	: 7.0x(Code M)	Mounting	: F-1
No load current	: 9.00/3.88-4.50 A	Rotation ¹	: CCW
Rated speed	: 3500 rpm	Starting method	: Direct On Line
Slip	: 2.78 %	Approx. weight ³	: 15.0 kg
Rated torque	: 0.207 kgfm		
Locked rotor torque	: 320 %		
Breakdown torque	: 280 %		
Insulation class	: B		
Service factor	: 1.15		
Moment of inertia (J)	: 0.0022 kgm ²		

Output	50%	75%	100%	Foundation loads	
Efficiency (%)	55.0	63.0	67.0	Max. traction	: 11 kgf
Power Factor	0.56	0.67	0.75	Max. compression	: 26 kgf

		Drive end	Non drive end
Bearing type	:	6204 2RS	6202 2RS
Sealing	:	V'Ring	V'Ring
Lubrication interval	:	-	-
Lubricant amount	:	-	-
Lubricant type	:	Mobil Polyrex EM	

Notes

This revision replaces and cancel the previous one, which must be eliminated.

- (1) Looking the motor from the shaft end.
- (2) Measured at 1m and with tolerance of +3dB(A).
- (3) Approximate weight subject to changes after manufacturing process.
- (4) At 100% of full load.

These are average values based on tests with sinusoidal power supply, subject to the tolerances stipulated in NEMA MG-1.

Rev.	Changes Summary	Performed	Checked	Date
Performed by		Page Revision 1 / 2		
Checked by				
Date	24/10/2024			

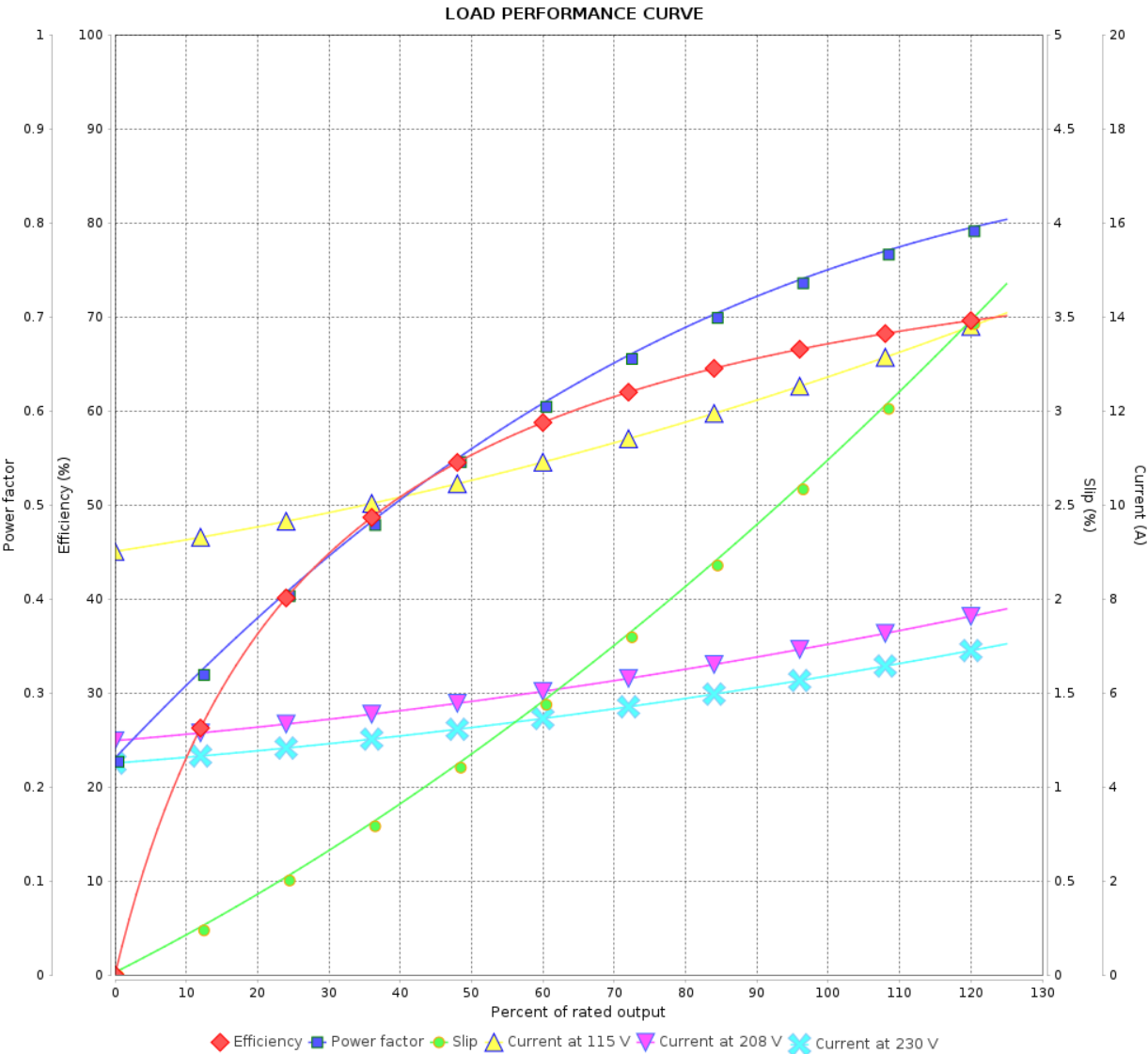
LOAD PERFORMANCE CURVE

Single Phase Induction Motor - Squirrel Cage



Customer :

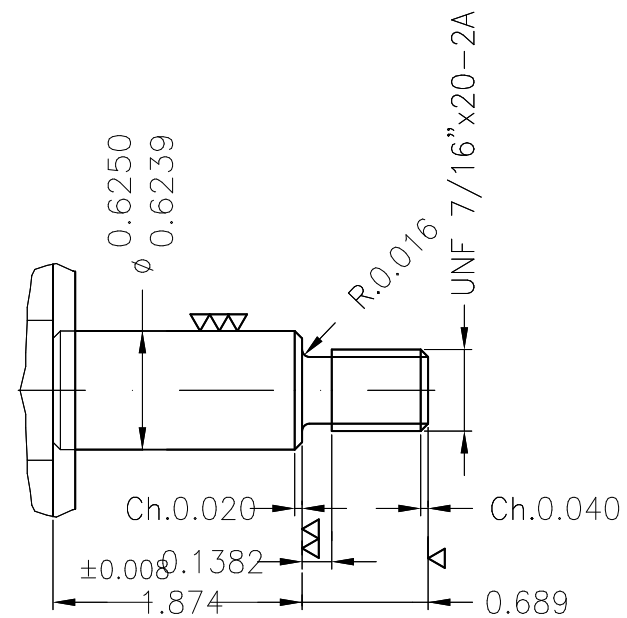
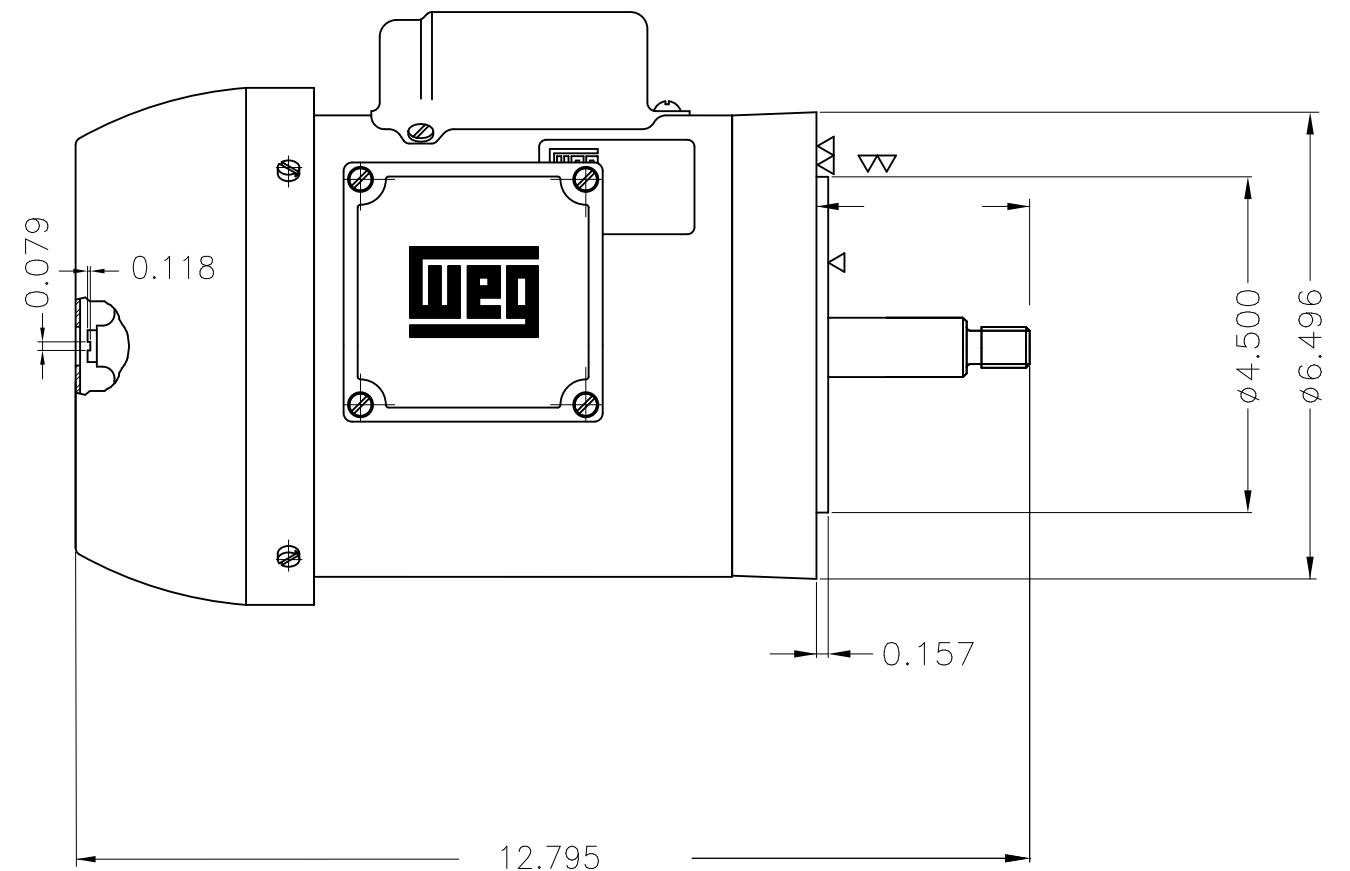
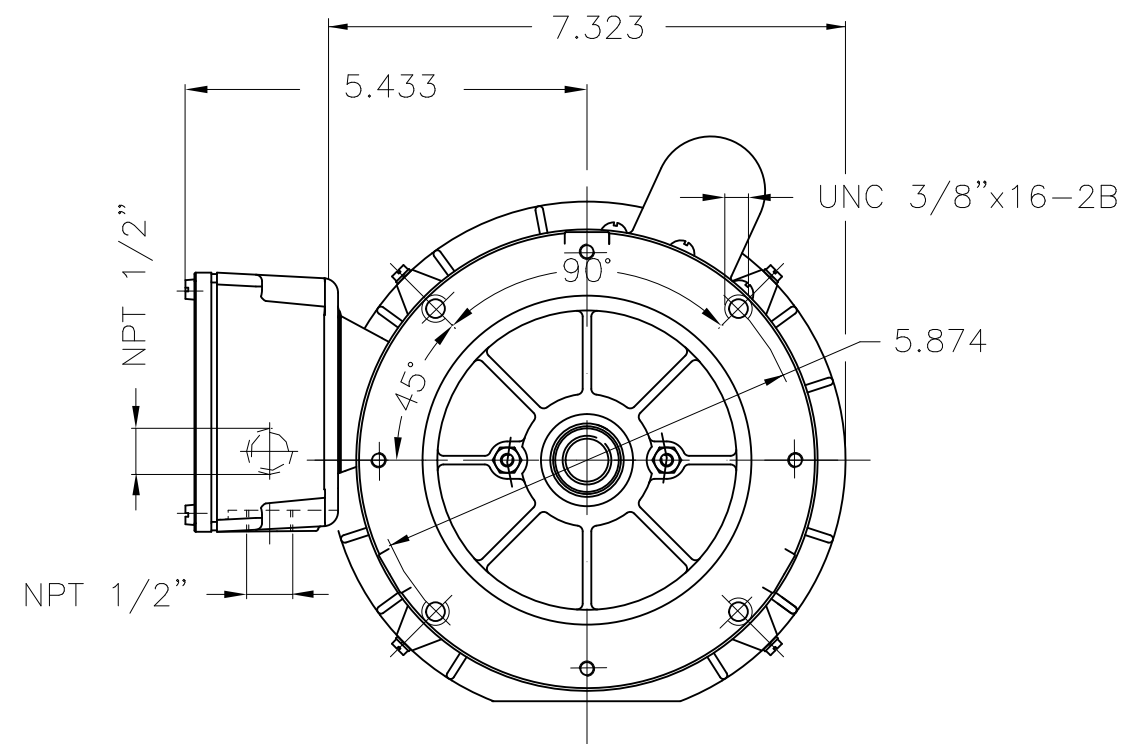
Product line : Centrifugal Pump Single-Phase Start Capacitor Product code : 10504701





Performance : 115/208-230 V 60 Hz 2P

Rated current	: 12.8/6.40-6.40 A	Moment of inertia (J)	: 0.0022 kgm ²
LRC	: 7.0	Duty cycle	: Cont.(S1)
Rated torque	: 0.207 kgfm	Insulation class	: B
Locked rotor torque	: 320 %	Service factor	:
Breakdown torque	: 280 %	Temperature rise	: 80 K
Rated speed	: 3500 rpm		

Rev.	Changes Summary	Performed	Checked	Date
Performed by		Page 2 / 2Revision		
Checked by				
Date	24/10/2024			



Mounting B14R(D)									
						HYBRISUSER			00
ECM	LOC	SUMMARY OF MODIFICATIONS				EXECUTED	CHECKED	RELEASED	DATE VER
EXECUTED	HYBRISUSER		SINGLE PH. MOTOR CENTRIFUGAL PUMP FRAME D56J IP55 TEFC			<div>PREVIEW</div> <div>WDD 00</div>			
CHECKED									
RELEASED									
REL. DATE		WMO	Jaragua do Sul		Product Engineering	SHEET	1 / 1		