

DATA SHEET



Single Phase Induction Motor - Squirrel Cage

| | | | | | | |
|--|---------------------------|--|--|---------------------------|---------|----------|
| Customer : | | | | | | |
| Product line | | : Centrifugal Pump Single-Phase Start Capacitor | | Product code : 10749078 | | |
| Frame | : B56J | | Locked rotor time | : 10s (cold) 6s (hot) | | |
| Output | : 0.75 HP (0.55 kW) | | Temperature rise | : 80 K | | |
| Poles | : 2 | | Duty cycle | : Cont.(S1) | | |
| Frequency | : 60 Hz | | Ambient temperature | : -20°C to +40°C | | |
| Rated voltage | : 115/208-230 V | | Altitude | : 1000 m.a.s.l. | | |
| Rated current | : 10.4/5.00-5.20 A | | Protection degree | : IP55 | | |
| L. R. Amperes | : 65.5/31.5-32.8 A | | Cooling method | : IC411 - TEFC | | |
| LRC | : 6.3x(Code K) | | Mounting | : F-1 | | |
| No load current | : 7.60/3.28-3.80 A | | Rotation ¹ | : CCW | | |
| Rated speed | : 3490 rpm | | Noise level ² | : 55.0 dB(A) | | |
| Slip | : 3.06 % | | Starting method | : Direct On Line | | |
| Rated torque | : 0.157 kgfm | | Approx. weight ³ | : 12.7 kg | | |
| Locked rotor torque | : 300 % | | | | | |
| Breakdown torque | : 290 % | | | | | |
| Insulation class | : B | | | | | |
| Service factor | : 1.15 | | | | | |
| Moment of inertia (J) | : 0.0017 kgm ² | | | | | |
| Output | 50% | 75% | 100% | Foundation loads | | |
| Efficiency (%) | 52.0 | 60.0 | 64.0 | Max. traction : 8 kgf | | |
| Power Factor | 0.54 | 0.64 | 0.72 | Max. compression : 20 kgf | | |
| | | <u>Drive end</u> | | <u>Non drive end</u> | | |
| Bearing type | : | 6203 2RS | | 6202 2RS | | |
| Sealing | : | V'Ring | | V'Ring | | |
| Lubrication interval | : | - | | - | | |
| Lubricant amount | : | - | | - | | |
| Lubricant type | : | Mobil Polyrex EM | | | | |
| Notes | | | | | | |
| This revision replaces and cancel the previous one, which must be eliminated. (1) Looking the motor from the shaft end. (2) Measured at 1m and with tolerance of +3dB(A). (3) Approximate weight subject to changes after manufacturing process. (4) At 100% of full load. | | | These are average values based on tests with sinusoidal power supply, subject to the tolerances stipulated in NEMA MG-1. | | | |
| Rev. | Changes Summary | | | Performed | Checked | Date |
| Performed by | | | | | | |
| Checked by | | | | | Page | Revision |
| Date | 24/10/2024 | | | | 1 / 2 | |

LOAD PERFORMANCE CURVE

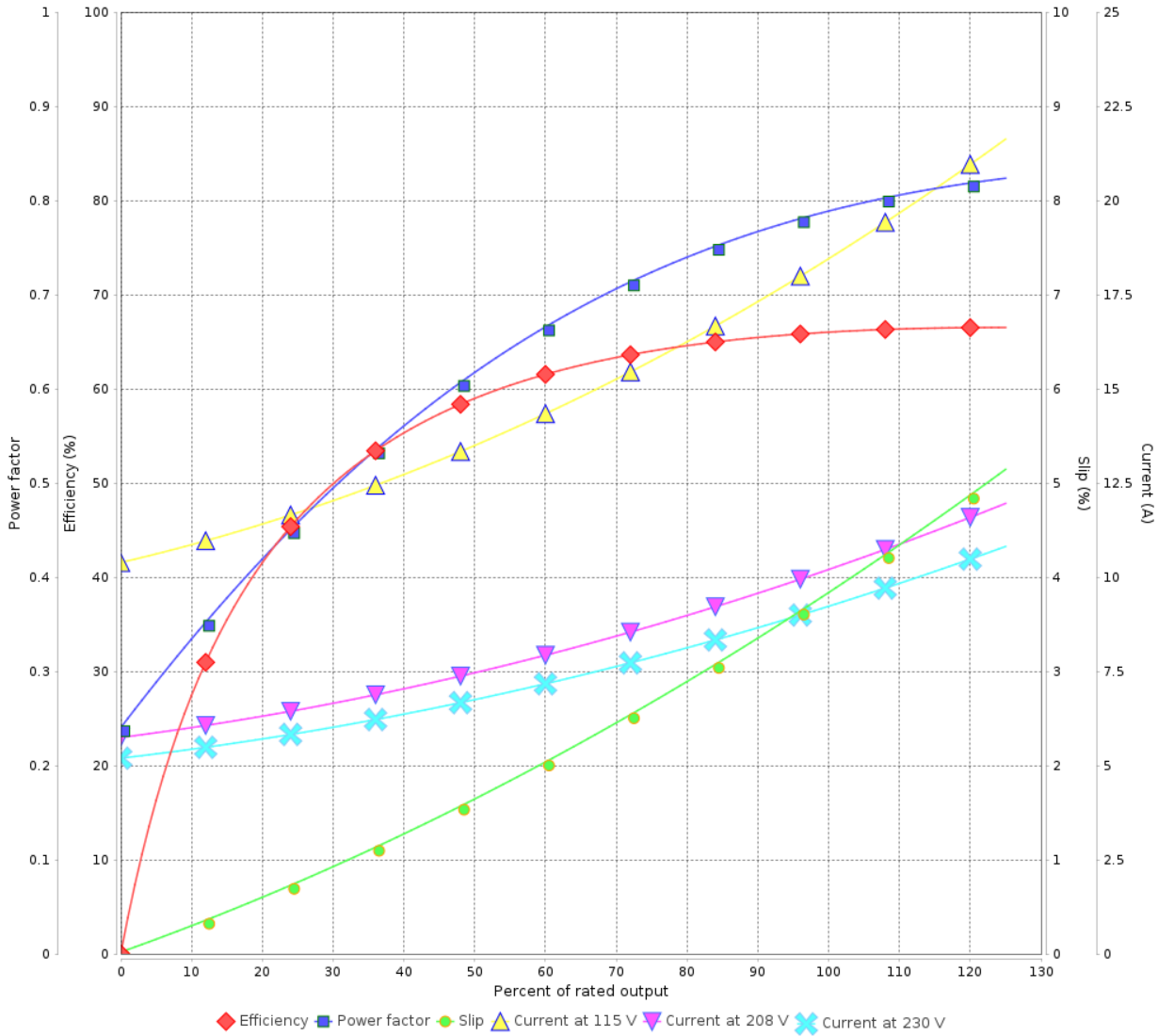
Single Phase Induction Motor - Squirrel Cage



Customer :

Product line : Centrifugal Pump Single-Phase Start Capacitor Product code : 10749078

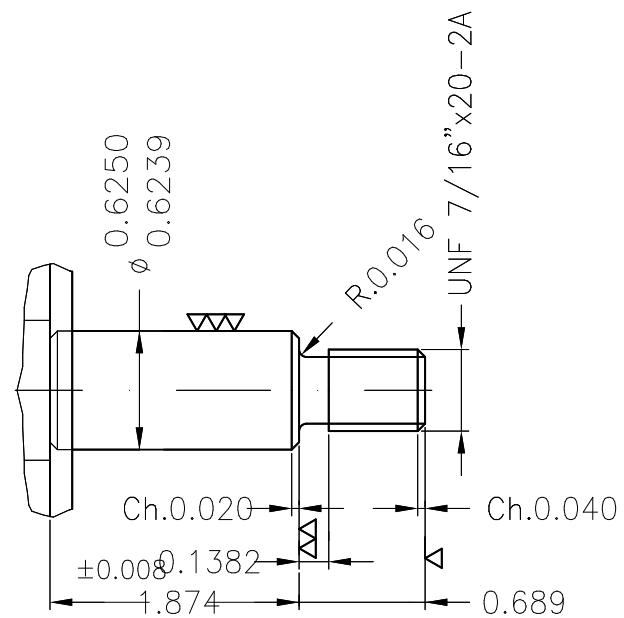
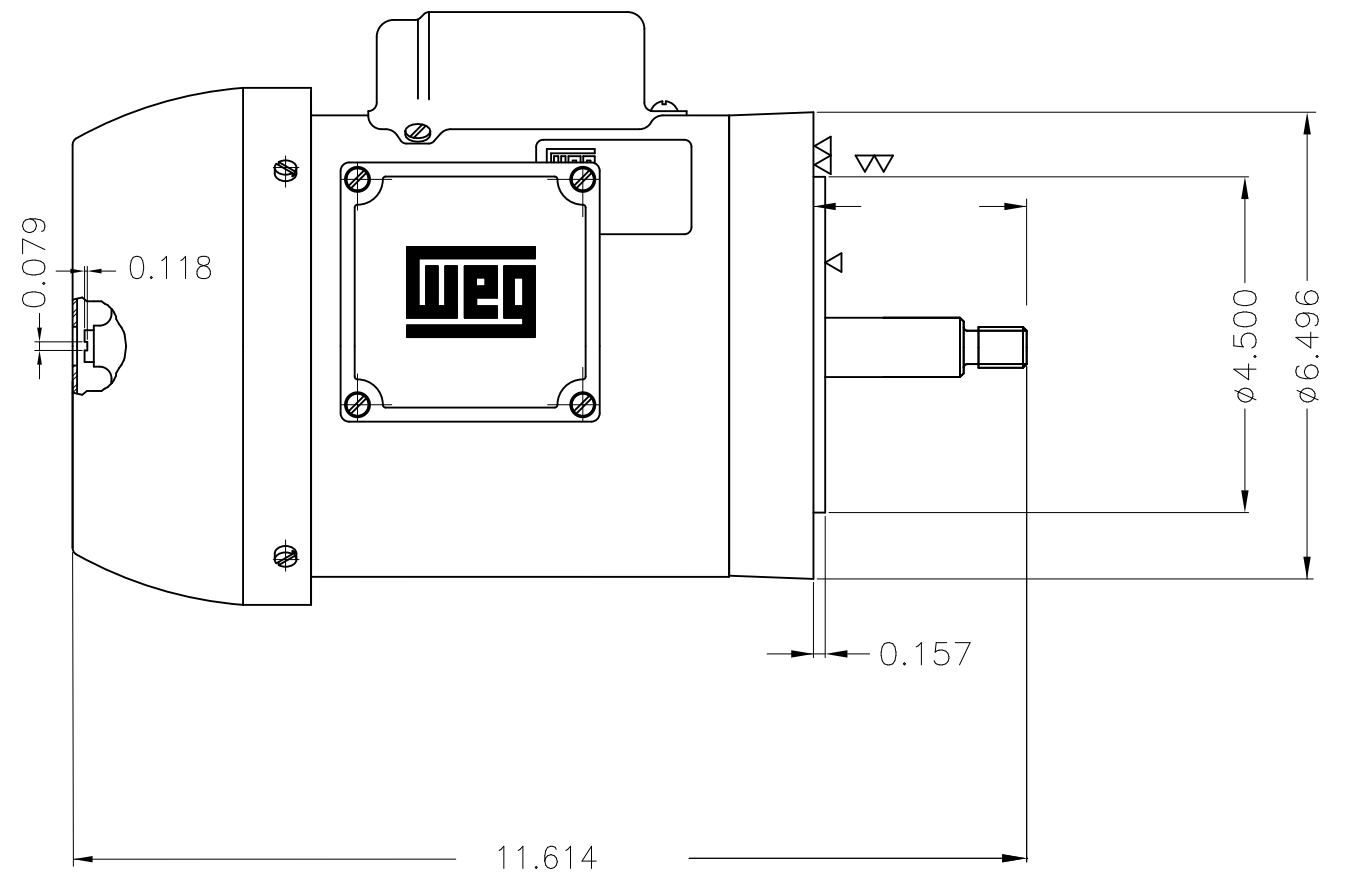
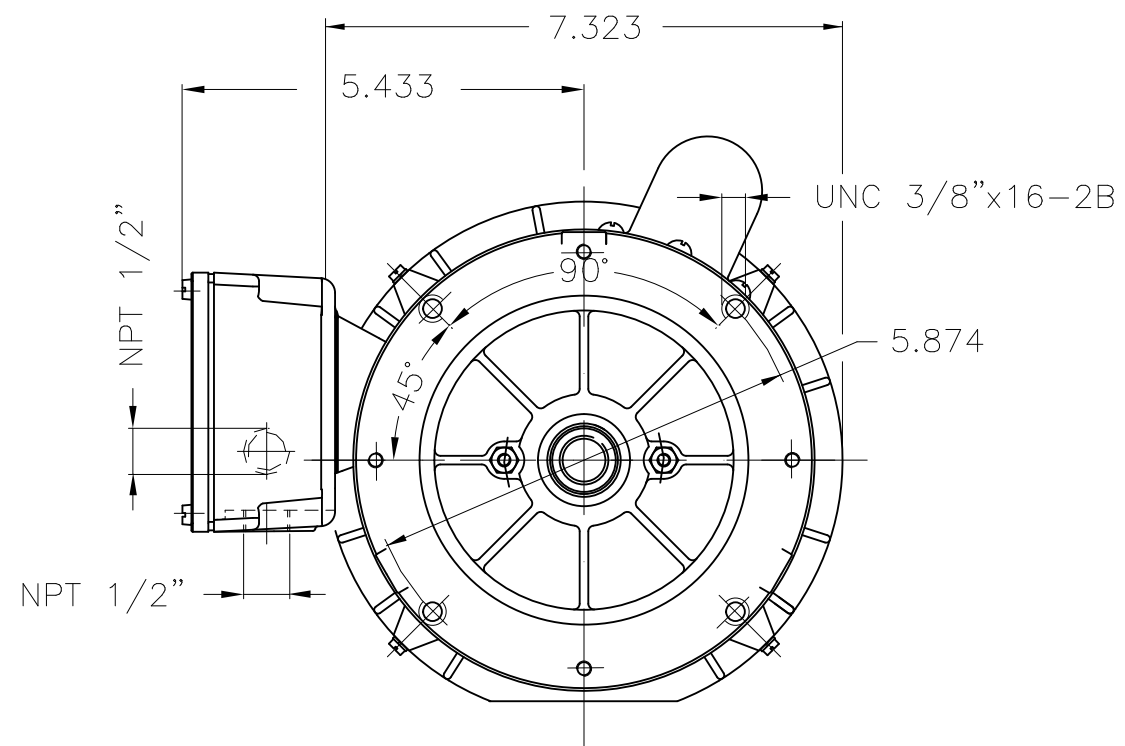
LOAD PERFORMANCE CURVE



Performance : 115/208-230 V 60 Hz 2P

| | | | |
|---------------------|--------------------|-----------------------|---------------------------|
| Rated current | : 10.4/5.00-5.20 A | Moment of inertia (J) | : 0.0017 kgm ² |
| LRC | : 6.3 | Duty cycle | : Cont.(S1) |
| Rated torque | : 0.157 kgfm | Insulation class | : B |
| Locked rotor torque | : 300 % | Service factor | : |
| Breakdown torque | : 290 % | Temperature rise | : 80 K |
| Rated speed | : 3490 rpm | | |

| Rev. | Changes Summary | Performed | Checked | Date |
|--------------|-----------------|-----------|---------------|----------|
| | | | | |
| Performed by | | | Page 2 / 2 | Revision |
| Checked by | | | | |
| Date | 24/10/2024 | | | |



| Mounting B14R(D) | | | | | | |
|------------------|------------|-----------------------------------|---------------------|-------------|----------|------|
| ECM | LOC | SUMMARY OF MODIFICATIONS | EXECUTED | CHECKED | RELEASED | DATE |
| EXECUTED | HYBRISUSER | SINGLE PH. MOTOR CENTRIFUGAL PUMP | | | | |
| CHECKED | | FRAME B56J IP55 TEFC | | | | |
| RELEASED | | | | | | |
| REL. DATE | WMO | Jaragua do Sul | Product Engineering | PREVIEW | | |
| | | | | WDD | 00 | |
| | | | | SHEET 1 / 1 | | |

3/4 HP 02 Poles 60 Hz