

# DATA SHEET

## Three Phase Induction Motor - Squirrel Cage



Customer	:			
Product line	: Jet Pump - J type Three-Phase	Product code : 13721664		
Frame	: W56J	Cooling method : IC411 - TEFC		
Insulation class	: F	Mounting : W-6		
Duty cycle	: Cont.(S1)	Rotation <sup>1</sup> : CCW		
Ambient temperature	: -20°C to +40°C	Starting method : Direct On Line		
Altitude	: 1000 m.a.s.l.	Approx. weight <sup>3</sup> : 6.8 kg		
Protection degree	: IP55	Moment of inertia (J) : 0.0006 kgm <sup>2</sup>		
Output [HP]		0.33		
Poles		2		
Frequency [Hz]		60		
Rated voltage [V]		575		
Rated current [A]		0.458		
L. R. Amperes [A]		3.25		
LRC [A]		7.1x(Code L)		
No load current [A]		0.283		
Rated speed [RPM]		3450		
Slip [%]		4.17		
Rated torque [kgfm]		0.069		
Locked rotor torque [%]		320		
Breakdown torque [%]		370		
Service factor		1.15		
Temperature rise		80 K		
Locked rotor time		50s (cold) 28s (hot)		
Noise level <sup>2</sup>		65.0 dB(A)		
Efficiency (%)	25%			
	50%	59.5		
	75%	66.0		
	100%	72.0		
Power Factor	25%			
	50%	0.61		
	75%	0.71		
	100%	0.76		
Bearing type	: <u>Drive end</u> 6203 2RS <u>Non drive end</u> 6202 2RS	Foundation loads		
Sealing	: V'Ring V'Ring	Max. traction : 4 kgf		
Lubrication interval	: - -	Max. compression : 11 kgf		
Lubricant amount	: - -			
Lubricant type	: Mobil Polyrex EM			
Notes				
<p>This revision replaces and cancel the previous one, which must be eliminated.</p> <p>(1) Looking the motor from the shaft end.</p> <p>(2) Measured at 1m and with tolerance of +3dB(A).</p> <p>(3) Approximate weight subject to changes after manufacturing process.</p> <p>(4) At 100% of full load.</p>		<p>These are average values based on tests with sinusoidal power supply, subject to the tolerances stipulated in NEMA MG-1.</p>		
Rev.	Changes Summary	Performed	Checked	Date
Performed by				
Checked by			Page	Revision
Date	16/05/2022		1 / 2	

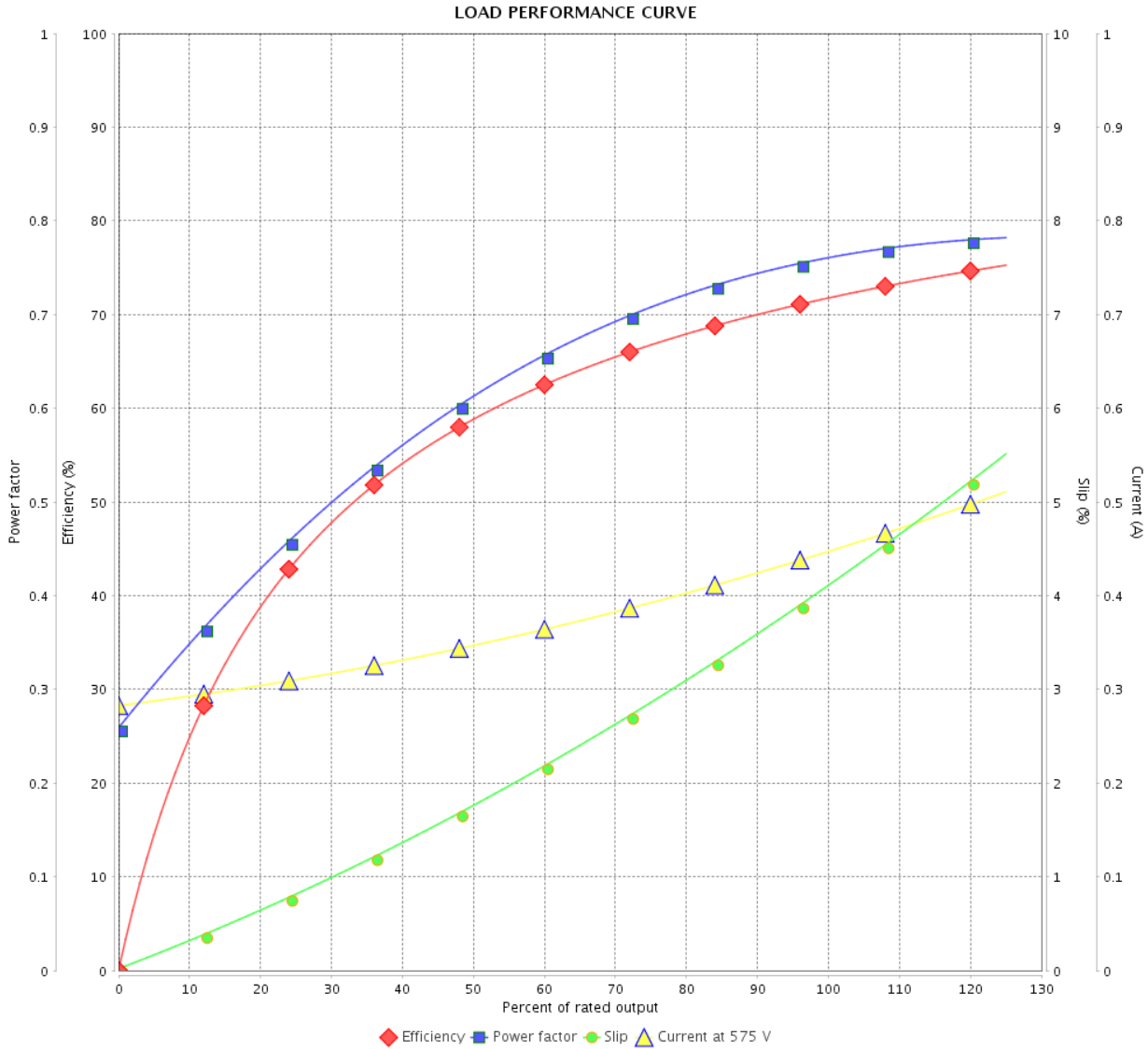
# LOAD PERFORMANCE CURVE

Three Phase Induction Motor - Squirrel Cage



Customer :

Product line : Jet Pump - J type Three-Phase      Product code : 13721664



Performance : 575 V 60 Hz 2P

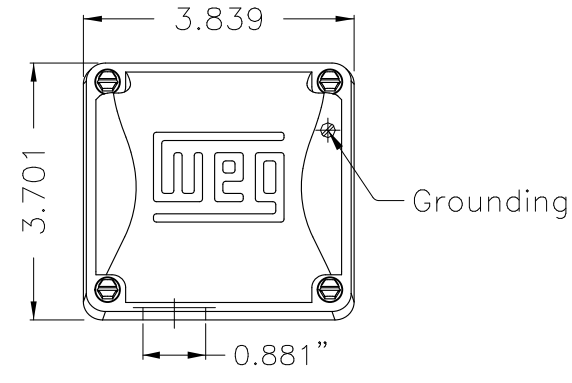
Rated current : 0.458 A  
 LRC : 7.1  
 Rated torque : 0.069 kgfm  
 Locked rotor torque : 320 %  
 Breakdown torque : 370 %  
 Rated speed : 3450 rpm

Moment of inertia (J) : 0.0006 kgm<sup>2</sup>  
 Duty cycle : Cont.(S1)  
 Insulation class : F  
 Service factor : 1.15  
 Temperature rise : 80 K

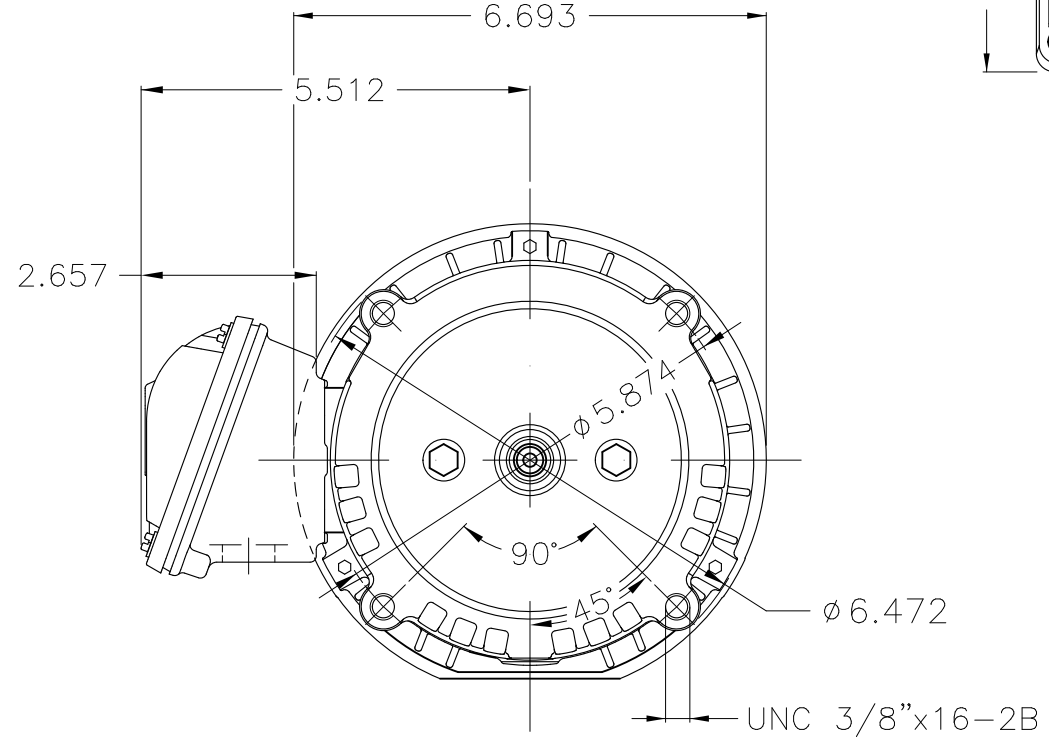
Rev.	Changes Summary	Performed	Checked	Date
Performed by			Page 2 / 2	Revision
Checked by				
Date	16/05/2022			

1 2 3 4 5 6

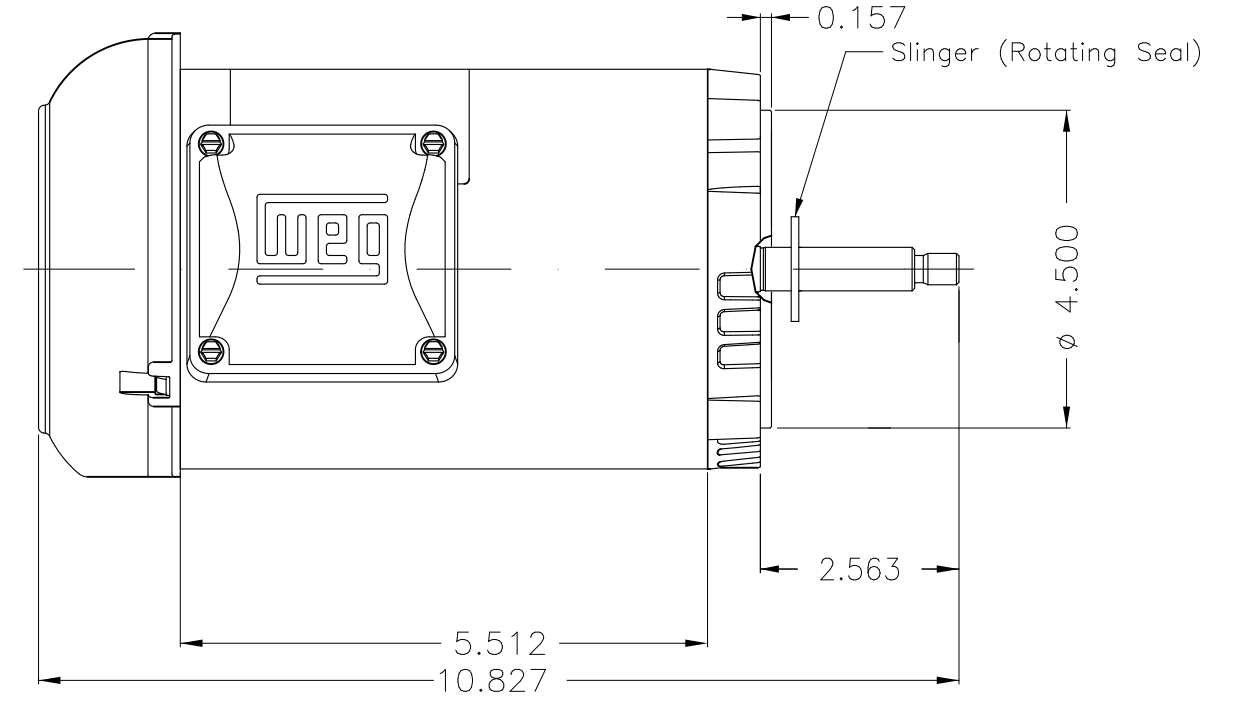
A



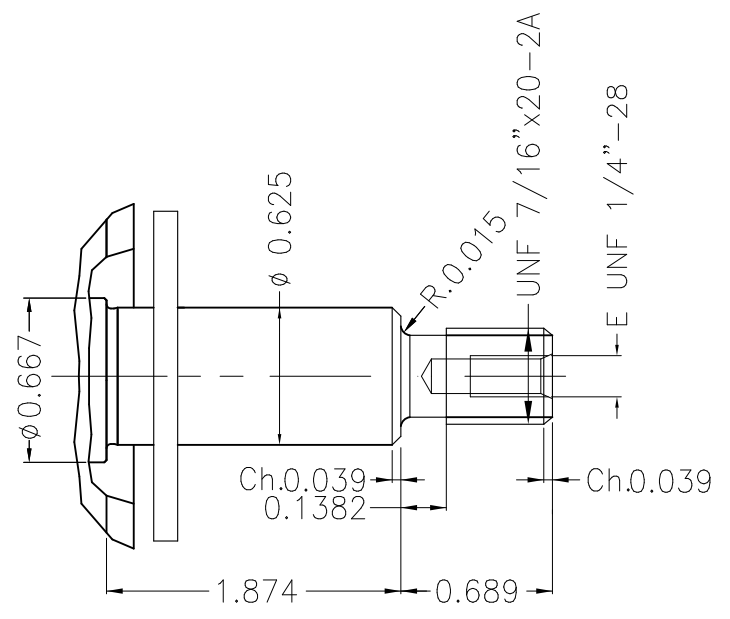
B



C



D



E

NDE sealing - V ring  
 Color Munsell N 1 matte black  
 Painting plan 207N  
 Mounting W-6/V18R(D)

						HYBRISUSER				00	
ECM	LOC	SUMMARY OF MODIFICATIONS				EXECUTED	CHECKED	RELEASED	DATE	VER	
EXECUTED	HYBRISUSER	THREE PH. MOTOR ROLLED STEEL JET PUMP THREADED PRESSURE									
CHECKED		FRAME W56J IP55 TEFC									
RELEASED											
REL. DATE		WMO	Jaragua do Sul	Product Engineering							

0.33 HP 02 Poles 60 Hz

A REL. DATE WMO Jaragua do Sul Product Engineering SHEET 1 / 1

