

DATA SHEET

Three Phase Induction Motor - Squirrel Cage



Customer :				
Product line	: Jet Pump - J type Three-Phase			
Product code :	13721662			
Frame	: W56J			
Insulation class	: F			
Duty cycle	: Cont.(S1)			
Ambient temperature	: -20°C to +40°C			
Altitude	: 1000 m.a.s.l.			
Protection degree	: IP55			
Cooling method	: IC411 - TEFC			
Mounting	: W-6			
Rotation ¹	: CCW			
Starting method	: Direct On Line			
Approx. weight ³	: 6.8 kg			
Moment of inertia (J)	: 0.0006 kgm ²			
Output [HP]	0.25			
Poles	2			
Frequency [Hz]	60			
Rated voltage [V]	575			
Rated current [A]	0.365			
L. R. Amperes [A]	2.70			
LRC [A]	7.4x(Code M)			
No load current [A]	0.230			
Rated speed [RPM]	3460			
Slip [%]	3.89			
Rated torque [kgfm]	0.052			
Locked rotor torque [%]	350			
Breakdown torque [%]	400			
Service factor	1.15			
Temperature rise	80 K			
Locked rotor time	54s (cold) 30s (hot)			
Noise level ²	65.0 dB(A)			
Efficiency (%)	25%			
	50%	55.0		
	75%	62.0		
	100%	66.0		
Power Factor	25%			
	50%	0.60		
	75%	0.70		
	100%	0.75		
Bearing type	: <u>Drive end</u> 6203 2RS <u>Non drive end</u> 6202 2RS			
Sealing	: V'Ring V'Ring			
Lubrication interval	: - -			
Lubricant amount	: - -			
Lubricant type	: Mobil Polyrex EM			
Foundation loads	Max. traction : 3 kgf			
	Max. compression : 10 kgf			
Notes				
This revision replaces and cancel the previous one, which must be eliminated. (1) Looking the motor from the shaft end. (2) Measured at 1m and with tolerance of +3dB(A). (3) Approximate weight subject to changes after manufacturing process. (4) At 100% of full load.				
These are average values based on tests with sinusoidal power supply, subject to the tolerances stipulated in NEMA MG-1.				
Rev.	Changes Summary	Performed	Checked	Date
Performed by				
Checked by			Page	Revision
Date	16/05/2022		1 / 2	

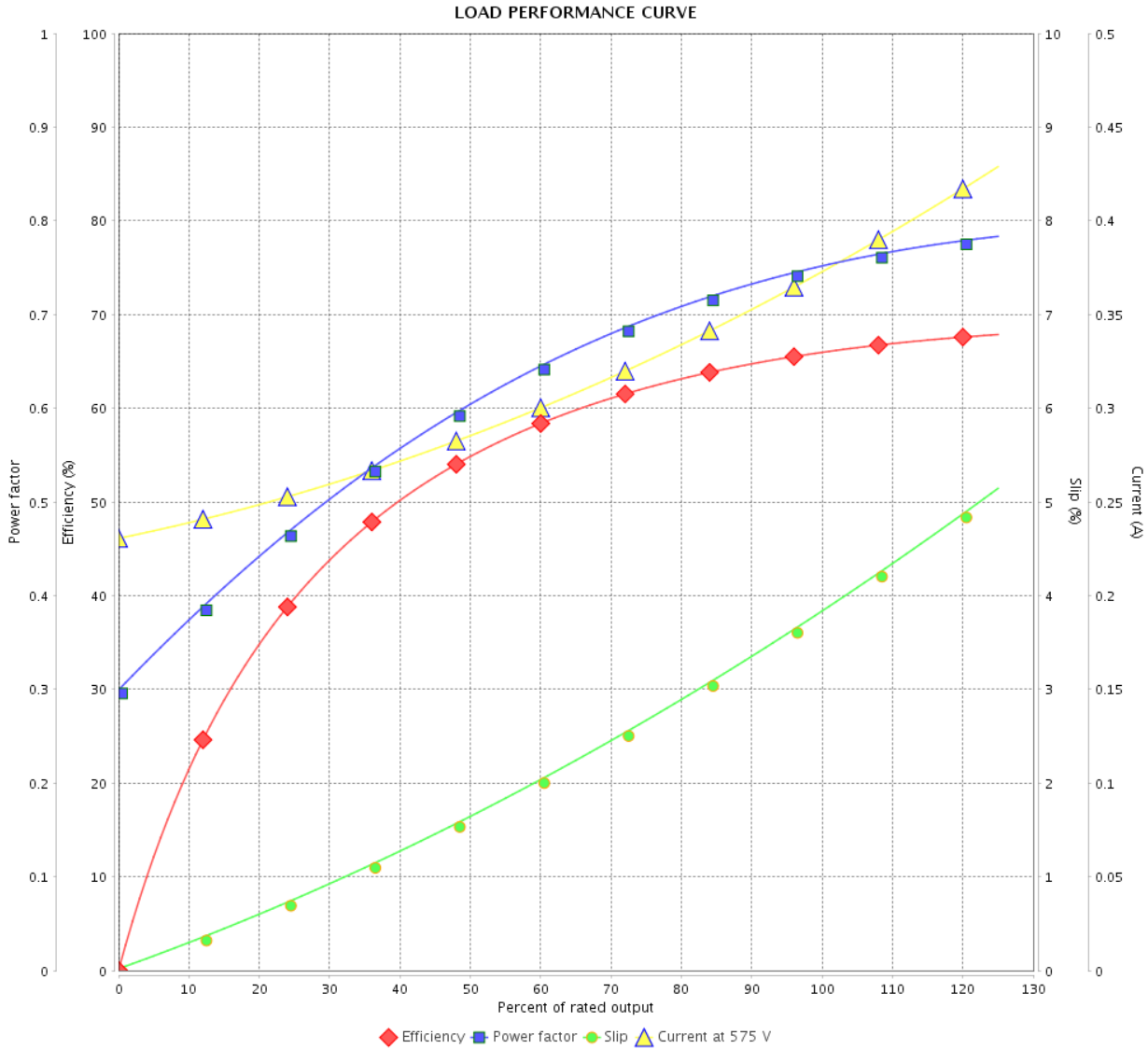
LOAD PERFORMANCE CURVE

Three Phase Induction Motor - Squirrel Cage



Customer :

Product line : Jet Pump - J type Three-Phase Product code : 13721662



Performance : 575 V 60 Hz 2P

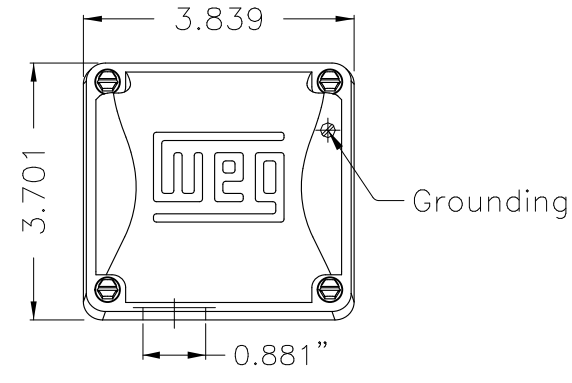
Rated current : 0.365 A
 LRC : 7.4
 Rated torque : 0.052 kgfm
 Locked rotor torque : 350 %
 Breakdown torque : 400 %
 Rated speed : 3460 rpm

Moment of inertia (J) : 0.0006 kgm²
 Duty cycle : Cont.(S1)
 Insulation class : F
 Service factor : 1.15
 Temperature rise : 80 K

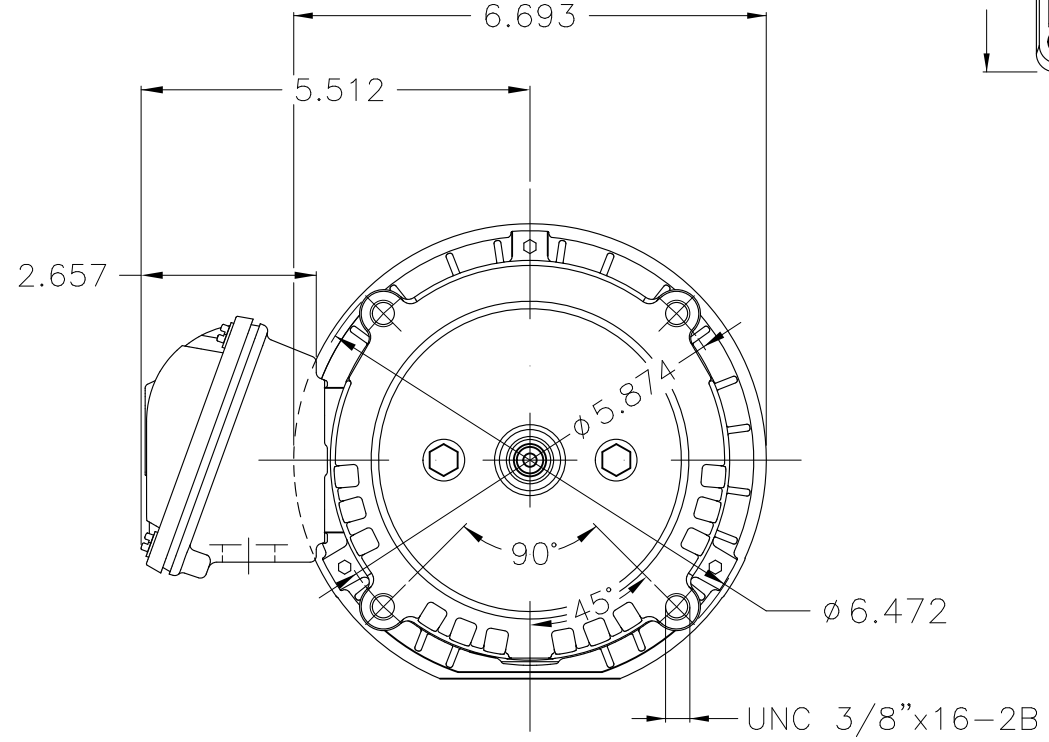
Rev.	Changes Summary	Performed	Checked	Date
Performed by			Page 2 / 2	Revision
Checked by				
Date	16/05/2022			

1 2 3 4 5 6

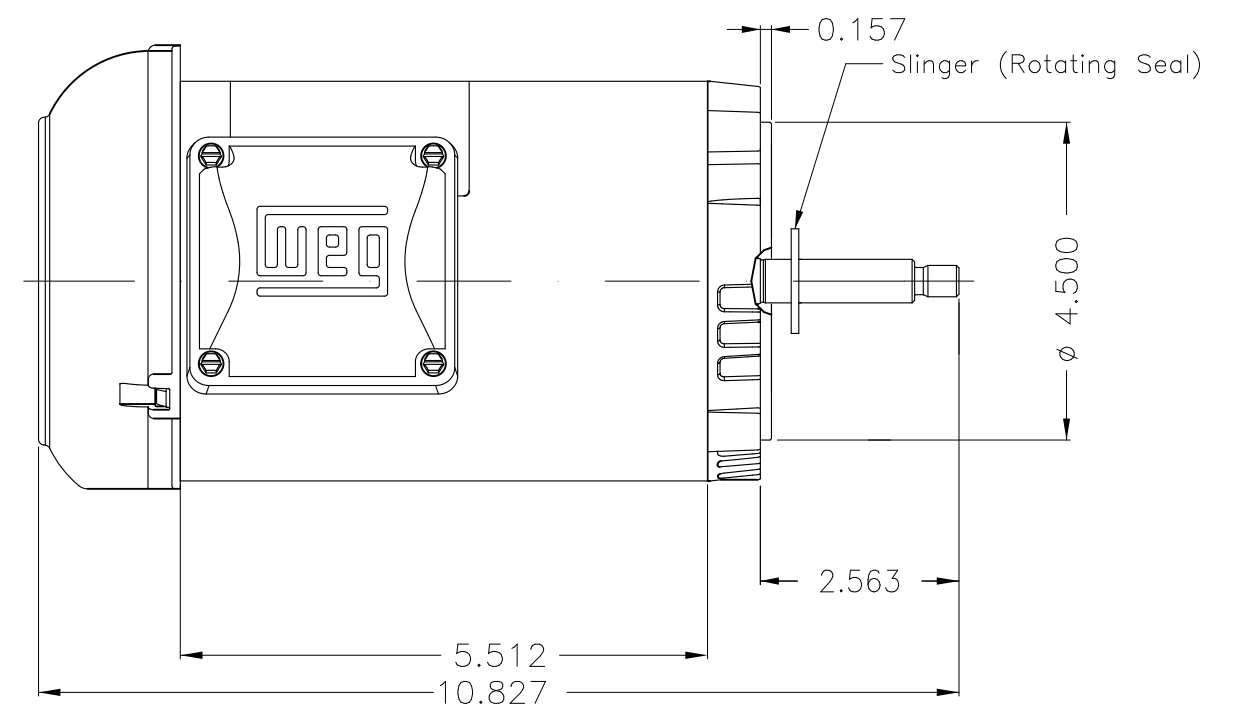
A



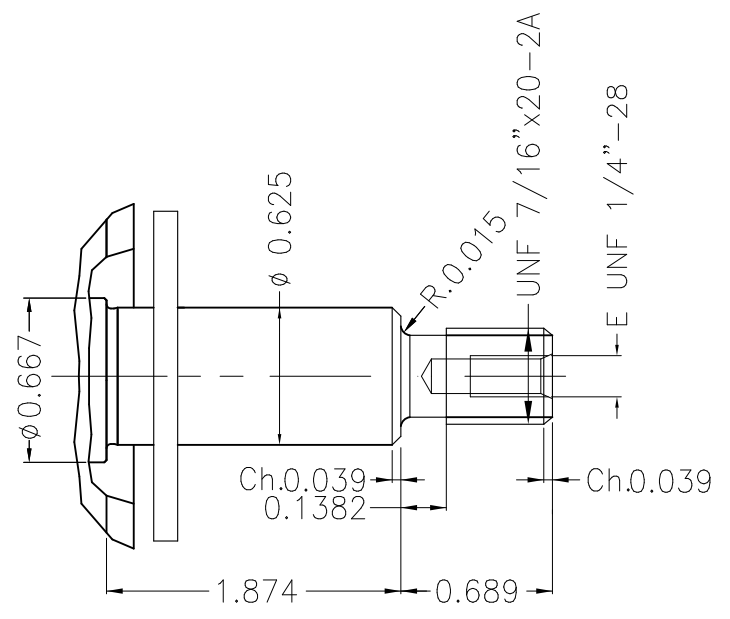
B



C



D



E

NDE sealing - V ring
 Color Munsell N 1 matte black
 Painting plan 207N
 Mounting W-6/V18R(D)

						HYBRISUSER				00	
ECM	LOC	SUMMARY OF MODIFICATIONS				EXECUTED	CHECKED	RELEASED	DATE	VER	
EXECUTED	HYBRISUSER	THREE PH. MOTOR ROLLED STEEL JET PUMP THREADED PRESSURE									
CHECKED		FRAME W56J IP55 TEFC									
RELEASED											
REL. DATE		WMO	Jaragua do Sul	Product Engineering							

0.25 HP 02 Poles 60 Hz

A WDD 00 SHEET 1 / 1

