

DATA SHEET

Three Phase Induction Motor - Squirrel Cage



Customer :				
Product line	: Jet Pump - J type Three-Phase	Product code :	13721660	
Frame	: W56J	Cooling method	: IC411 - TEFC	
Insulation class	: F	Mounting	: W-6	
Duty cycle	: Cont.(S1)	Rotation ¹	: CCW	
Ambient temperature	: -20°C to +40°C	Starting method	: Direct On Line	
Altitude	: 1000 m.a.s.l.	Approx. weight ²	: 6.8 kg	
Protection degree	: IP55	Moment of inertia (J)	: 0.0006 kgm ²	
Output [HP]	0.25	0.25	0.25	
Poles	2	2	2	
Frequency [Hz]	60	50	50	
Rated voltage [V]	208-230/460	190/380	220/415	
Rated current [A]	1.01-0.912/0.456	0.986/0.493	0.907/0.481	
L. R. Amperes [A]	7.47-6.75/3.37	5.92/2.96	6.17/3.27	
LRC [A]	7.4x(Code M)	6.0x(Code J)	6.8x(Code L)	
No load current [A]	0.497-0.576/0.288	0.560/0.280	0.596/0.316	
Rated speed [RPM]	3460	2835	2865	
Slip [%]	3.89	5.50	4.50	
Rated torque [kgfm]	0.052	0.064	0.063	
Locked rotor torque [%]	350	270	330	
Breakdown torque [%]	400	300	370	
Service factor		1.15	1.15	
Temperature rise	80 K	80 K	80 K	
Locked rotor time	54s (cold) 30s (hot)	54s (cold) 30s (hot)	46s (cold) 26s (hot)	
Noise level ²	65.0 dB(A)	64.0 dB(A)	64.0 dB(A)	
Efficiency (%)	25%			
	50%	55.0	60.1	
	75%	62.0	67.1	
	100%	66.0	70.4	
Power Factor	25%			
	50%	0.60	0.57	
	75%	0.70	0.68	
	100%	0.75	0.74	
Bearing type	: <u>Drive end</u> 6203 2RS <u>Non drive end</u> 6202 2RS	Foundation loads		
Sealing	: V'Ring V'Ring	Max. traction	: 4 kgf	
Lubrication interval	: - -	Max. compression	: 10 kgf	
Lubricant amount	: - -			
Lubricant type	: Mobil Polyrex EM			
Notes USABLE @208V SF 1.00				
This revision replaces and cancel the previous one, which must be eliminated. (1) Looking the motor from the shaft end. (2) Measured at 1m and with tolerance of +3dB(A). (3) Approximate weight subject to changes after manufacturing process. (4) At 100% of full load.		These are average values based on tests with sinusoidal power supply, subject to the tolerances stipulated in NEMA MG-1.		
Rev.	Changes Summary	Performed	Checked	Date
Performed by				
Checked by			Page	Revision
Date	16/05/2022		1 / 4	

LOAD PERFORMANCE CURVE

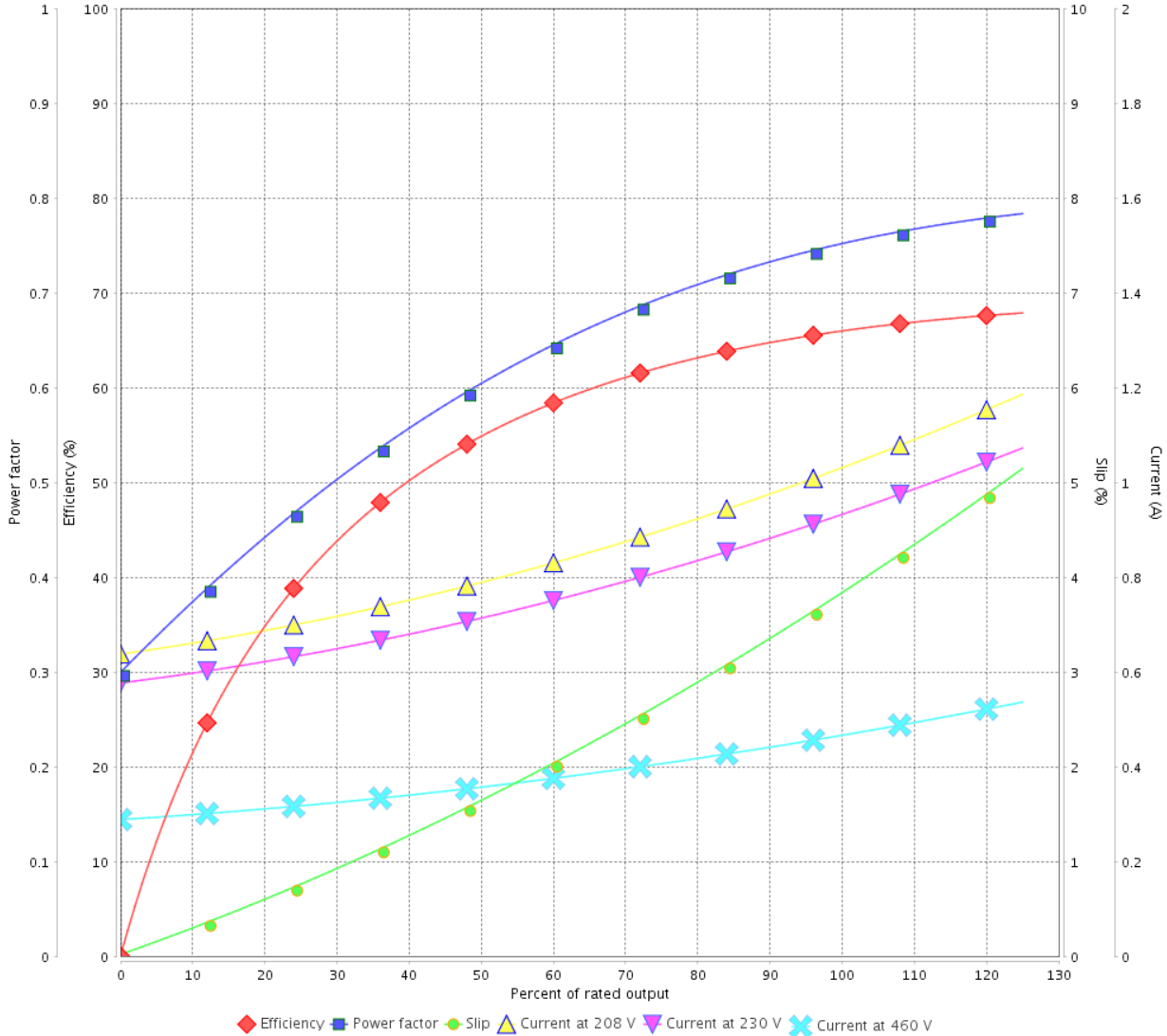
Three Phase Induction Motor - Squirrel Cage



Customer :

Product line : Jet Pump - J type Three-Phase Product code : 13721660

LOAD PERFORMANCE CURVE



Performance : 208-230/460 V 60 Hz 2P

Rated current : 1.01-0.912/0.456 A
 LRC : 7.4
 Rated torque : 0.052 kgfm
 Locked rotor torque : 350 %
 Breakdown torque : 400 %
 Rated speed : 3460 rpm

Moment of inertia (J) : 0.0006 kgm²
 Duty cycle : Cont.(S1)
 Insulation class : F
 Service factor :
 Temperature rise : 80 K

Rev.	Changes Summary	Performed	Checked	Date
Performed by			Page 2 / 4	Revision
Checked by				
Date	16/05/2022			

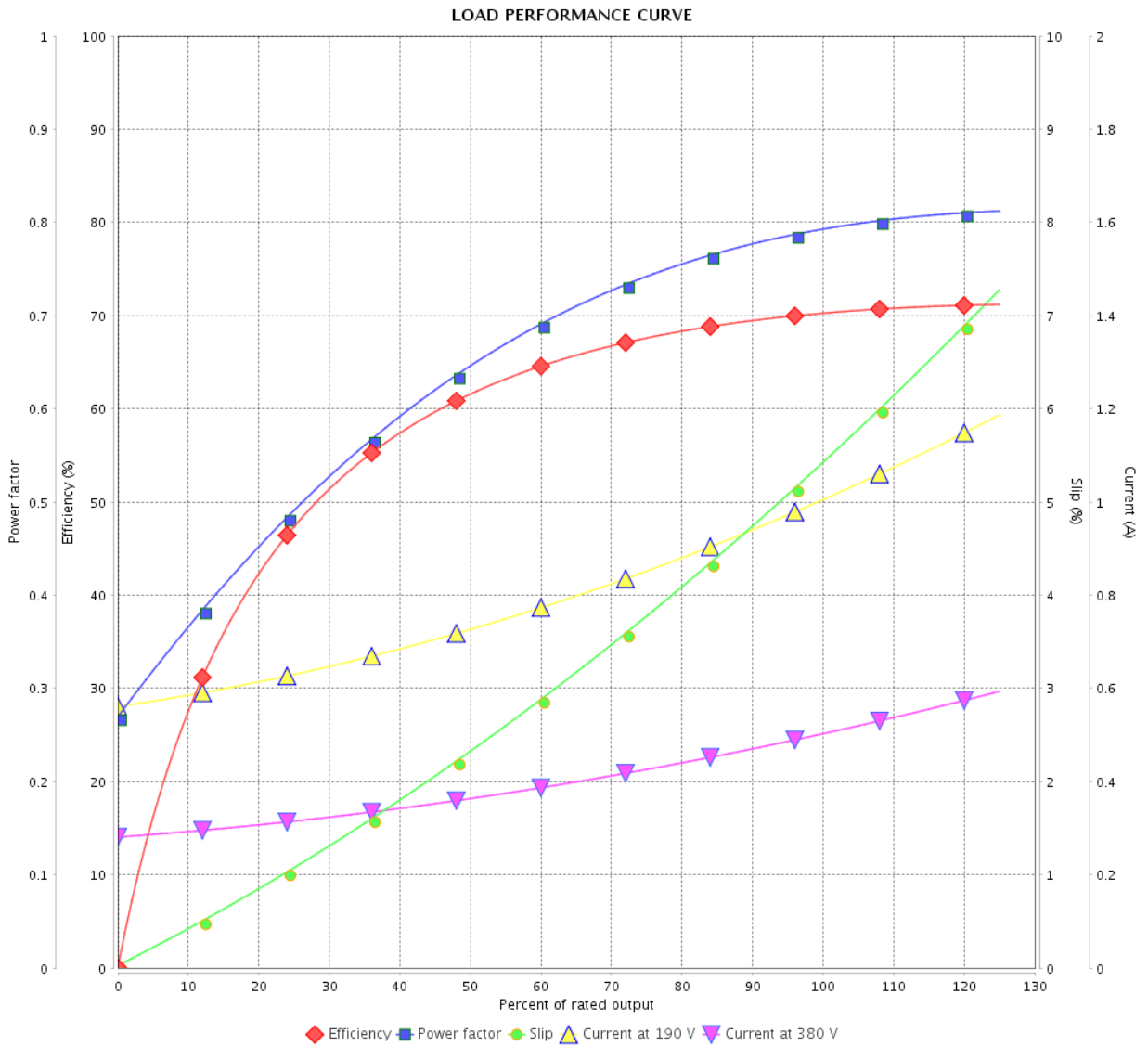
LOAD PERFORMANCE CURVE

Three Phase Induction Motor - Squirrel Cage



Customer : _____

Product line : Jet Pump - J type Three-Phase Product code : 13721660



Performance : 190/380 V 50 Hz 2P

Rated current : 0.986/0.493 A
 LRC : 6.0
 Rated torque : 0.064 kgfm
 Locked rotor torque : 270 %
 Breakdown torque : 300 %
 Rated speed : 2835 rpm

Moment of inertia (J) : 0.0006 kgm²
 Duty cycle : Cont.(S1)
 Insulation class : F
 Service factor : 1.15
 Temperature rise : 80 K

Rev.	Changes Summary	Performed	Checked	Date
Performed by		Page		Revision
Checked by		3 / 4		
Date		16/05/2022		

LOAD PERFORMANCE CURVE

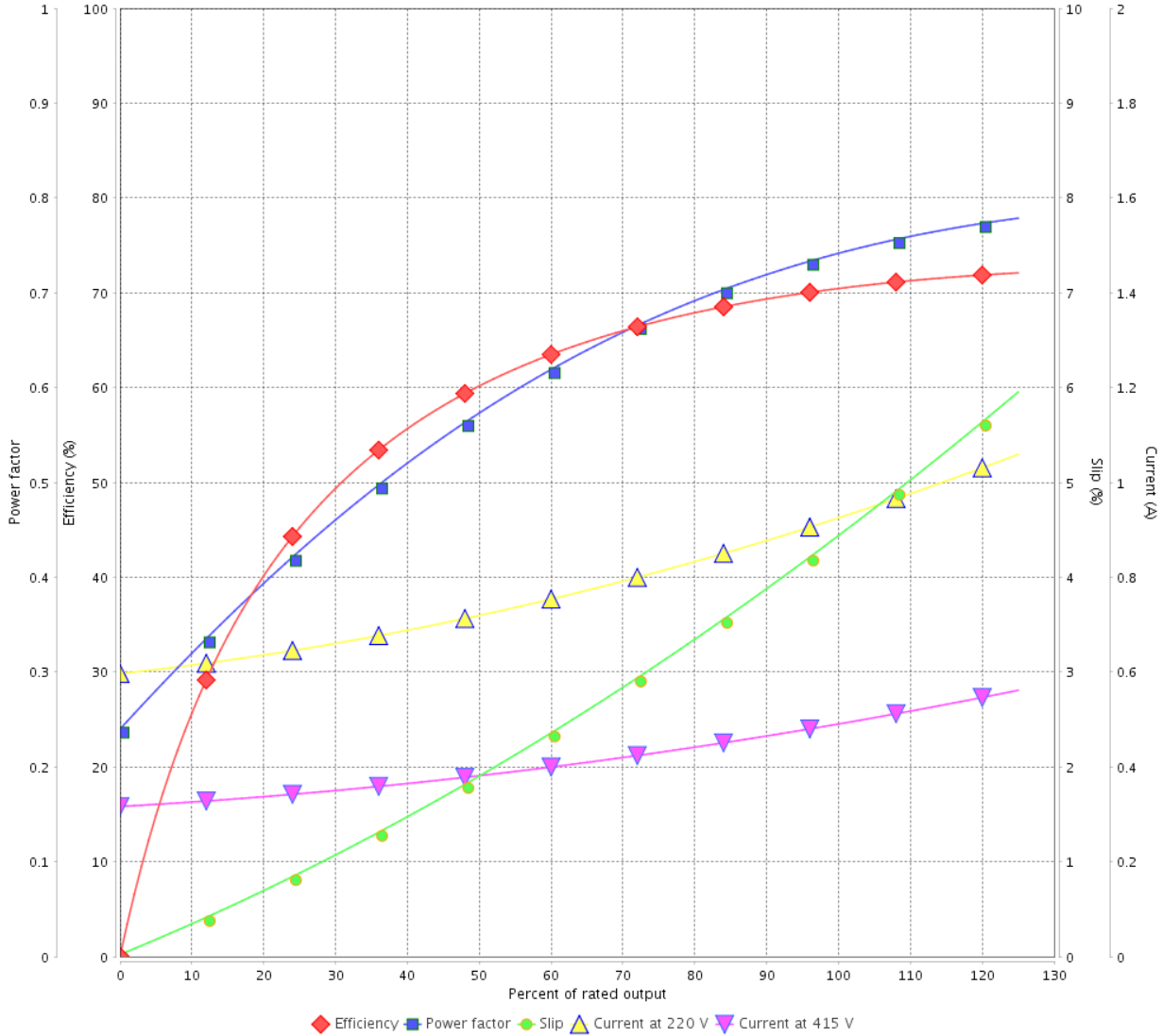
Three Phase Induction Motor - Squirrel Cage



Customer :

Product line : Jet Pump - J type Three-Phase Product code : 13721660

LOAD PERFORMANCE CURVE



Performance : 220/415 V 50 Hz 2P

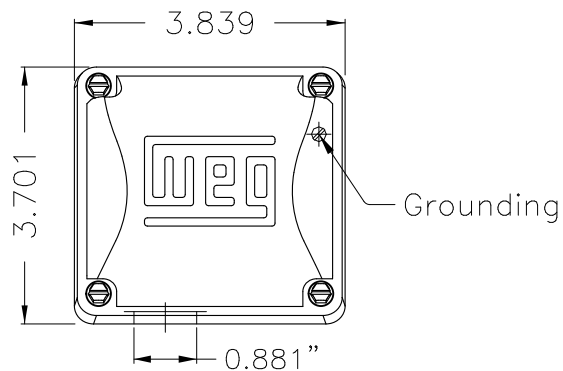
Rated current : 0.907/0.481 A
 LRC : 6.8
 Rated torque : 0.063 kgfm
 Locked rotor torque : 330 %
 Breakdown torque : 370 %
 Rated speed : 2865 rpm

Moment of inertia (J) : 0.0006 kgm²
 Duty cycle : Cont.(S1)
 Insulation class : F
 Service factor : 1.15
 Temperature rise : 80 K

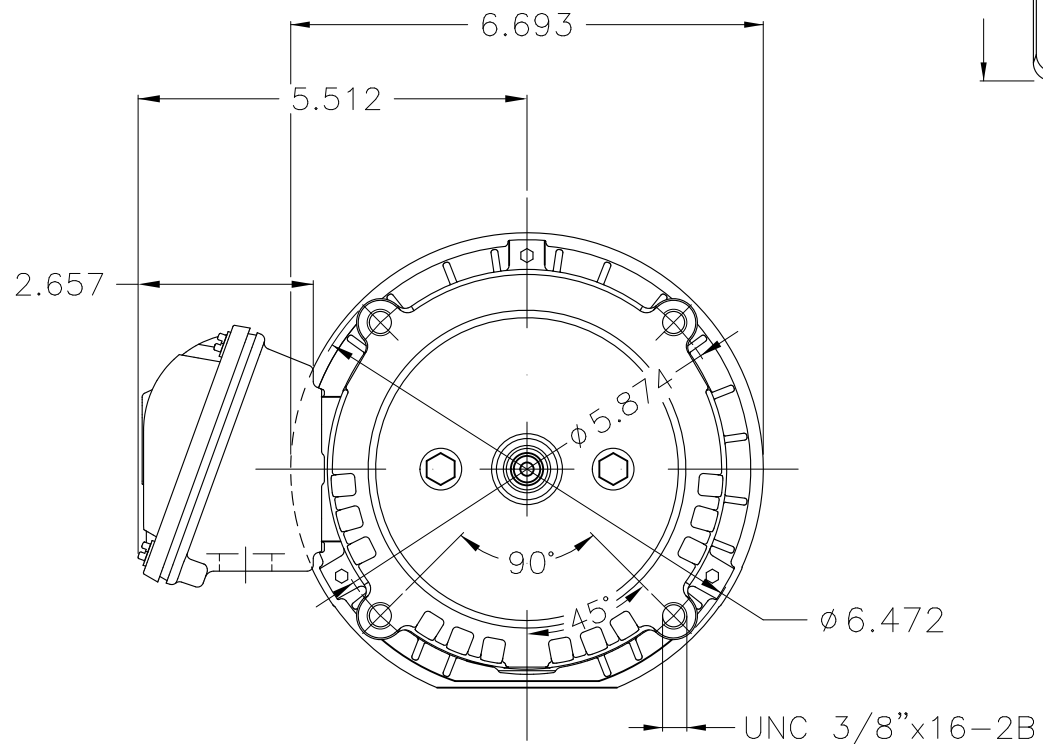
Rev.	Changes Summary	Performed	Checked	Date
Performed by			Page 4 / 4	Revision
Checked by				
Date	16/05/2022			

1 2 3 4 5 6

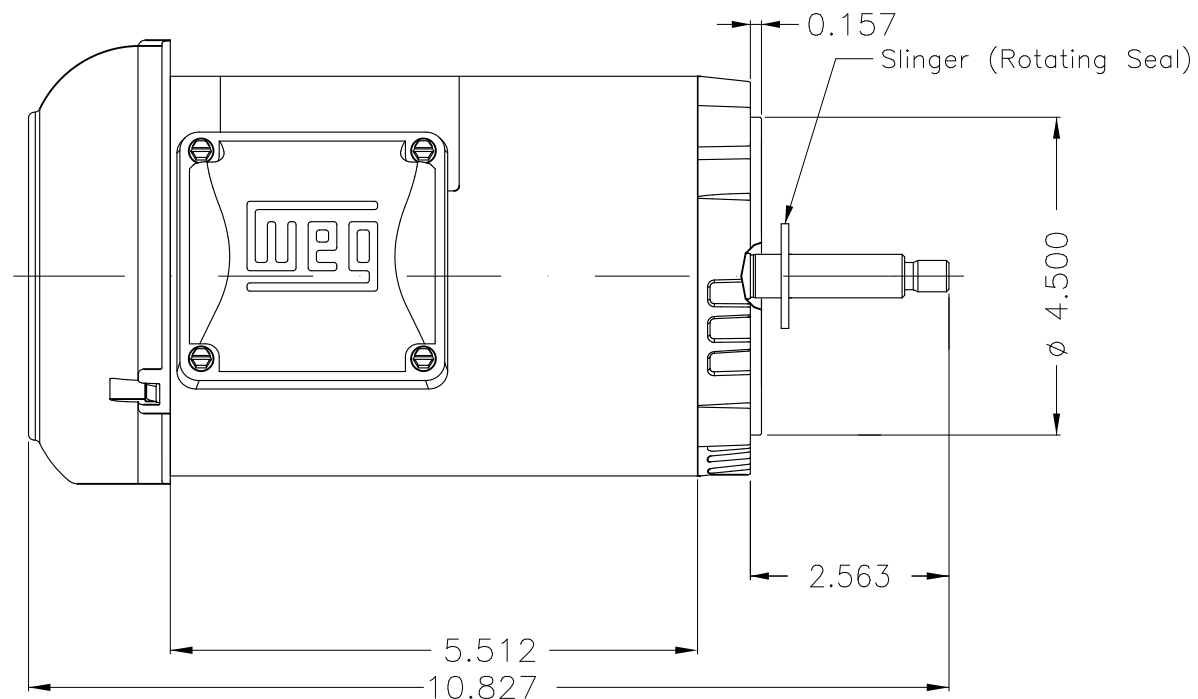
A



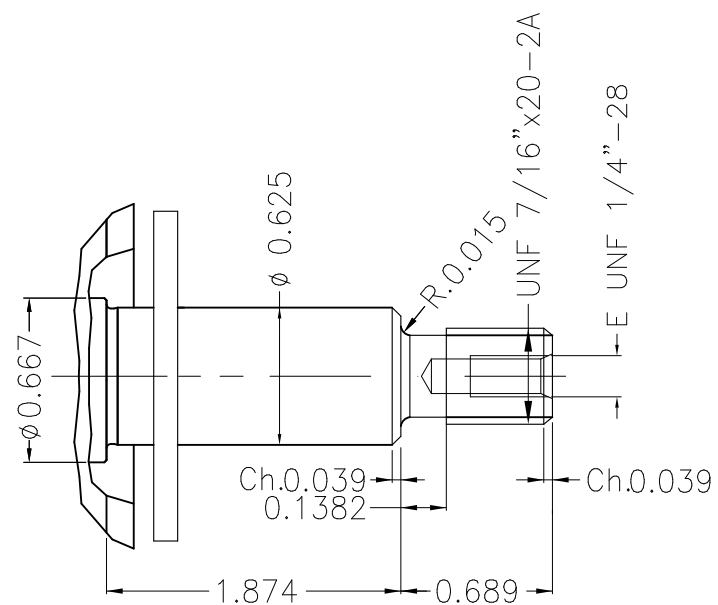
B



C



D



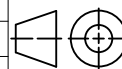
E

NDE sealing - V ring
 Color Munsell N 1 matte black
 Painting plan 207N
 Mounting W-6/V18R(D)

						HYBRISUSER				00
ECM	LOC	SUMMARY OF MODIFICATIONS				EXECUTED	CHECKED	RELEASED	DATE	VER
EXECUTED	HYBRISUSER	THREE PH. MOTOR ROLLED STEEL JET PUMP THREADED PUMP HEAD								
CHECKED		FRAME W56J IP55 TEFC								
RELEASED										
REL. DATE		WMO	Jaragua do Sul	Product Engineering						

0.25 HP 02 Poles 60 Hz

A



PREVIEW
 WDD 00



SHEET 1 / 1

Dimensions in inches XME A3