

# DATA SHEET



## Three Phase Induction Motor - Squirrel Cage

Customer :					
Product line		: Close Coupled Pump Standard Efficiency Three-Phase		Product code : 14966670	
Frame	: 286JP	Locked rotor time	: 23s (cold) 13s (hot)		
Output	: 30 HP (22 kW)	Temperature rise	: 80 K		
Poles	: 4	Duty cycle	: Cont.(S1)		
Frequency	: 60 Hz	Ambient temperature	: -20°C to +40°C		
Rated voltage	: 575 V	Altitude	: 1000 m.a.s.l.		
Rated current	: 29.2 A	Protection degree	: IP23		
L. R. Amperes	: 169 A	Cooling method	: IC01 - ODP		
LRC	: 5.8x(Code G)	Mounting	: F-1		
No load current	: 12.4 A	Rotation <sup>1</sup>	: Both (CW and CCW)		
Rated speed	: 1760 rpm	Noise level <sup>2</sup>	: 63.0 dB(A)		
Slip	: 2.22 %	Starting method	: Direct On Line		
Rated torque	: 12.4 kgfm	Approx. weight <sup>3</sup>	: 153 kg		
Locked rotor torque	: 229 %				
Breakdown torque	: 240 %				
Insulation class	: F				
Service factor	: 1.15				
Moment of inertia (J)	: 0.1121 kgm <sup>2</sup>				
Design	: B				
Output	50%	75%	100%	Foundation loads	
Efficiency (%)	89.5	90.0	90.2	Max. traction : 348 kgf	
Power Factor	0.70	0.79	0.84	Max. compression : 501 kgf	
		<u>Drive end</u>	<u>Non drive end</u>		
Bearing type	:	6311 Z C3	6211 Z C3		
Sealing	:	Without Bearing Seal	Without Bearing Seal		
Lubrication interval	:	20000 h	20000 h		
Lubricant amount	:	18 g	11 g		
Lubricant type	:	Mobil Polyrex EM			
Notes					
This revision replaces and cancel the previous one, which must be eliminated. (1) Looking the motor from the shaft end. (2) Measured at 1m and with tolerance of +3dB(A). (3) Approximate weight subject to changes after manufacturing process. (4) At 100% of full load.			These are average values based on tests with sinusoidal power supply, subject to the tolerances stipulated in NEMA MG-1.		
Rev.	Changes Summary		Performed	Checked	Date
Performed by					
Checked by				Page	Revision
Date	24/10/2024			1 / 2	

# LOAD PERFORMANCE CURVE

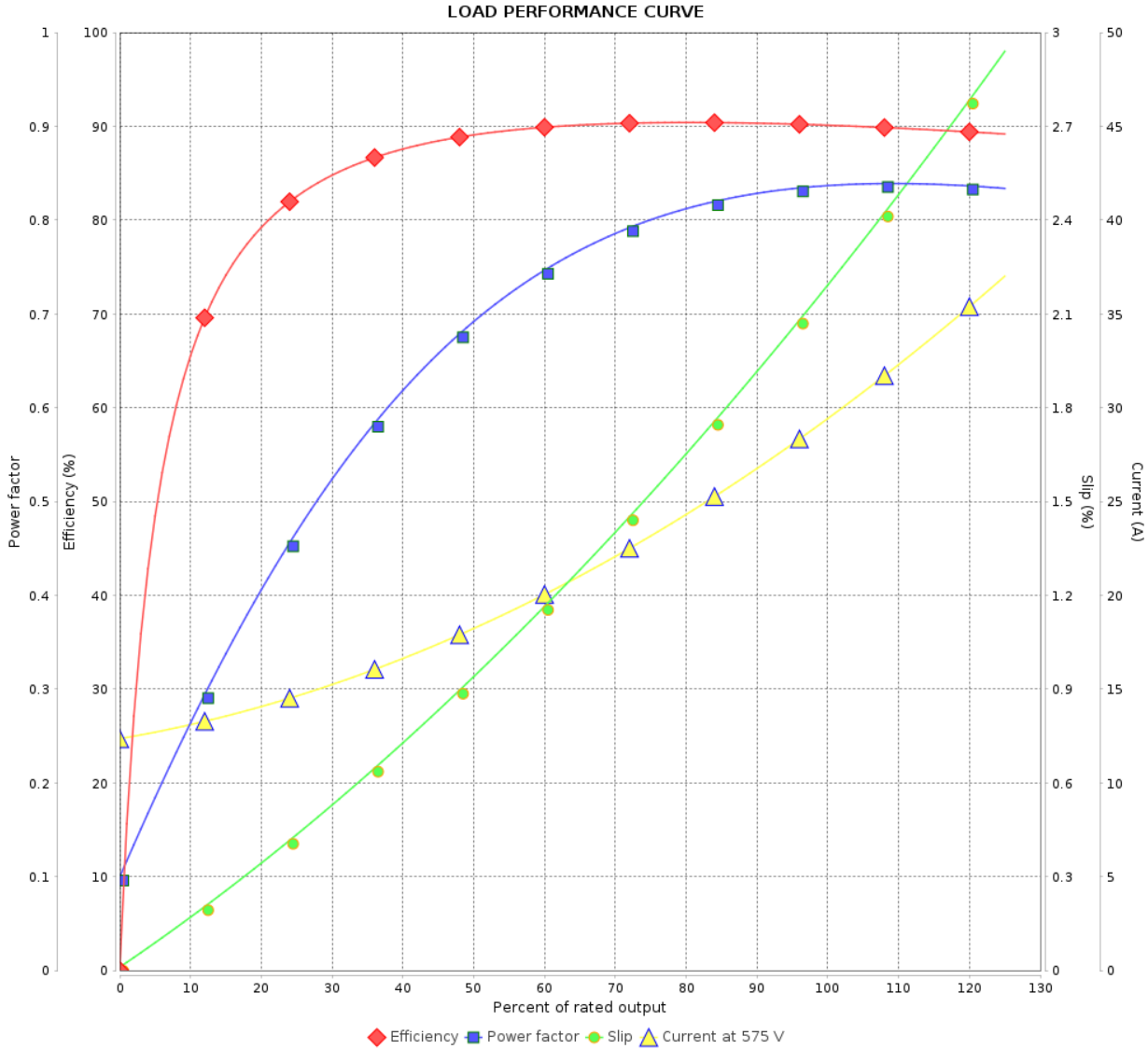
Three Phase Induction Motor - Squirrel Cage



Customer :

Product line : Close Coupled Pump Standard  
Efficiency Three-Phase

Product code : 14966670

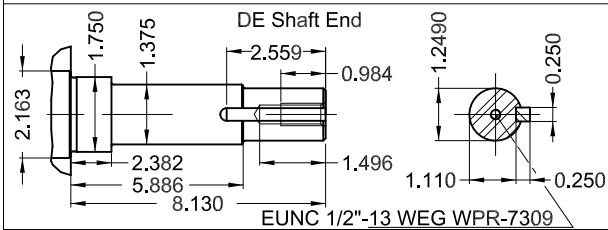
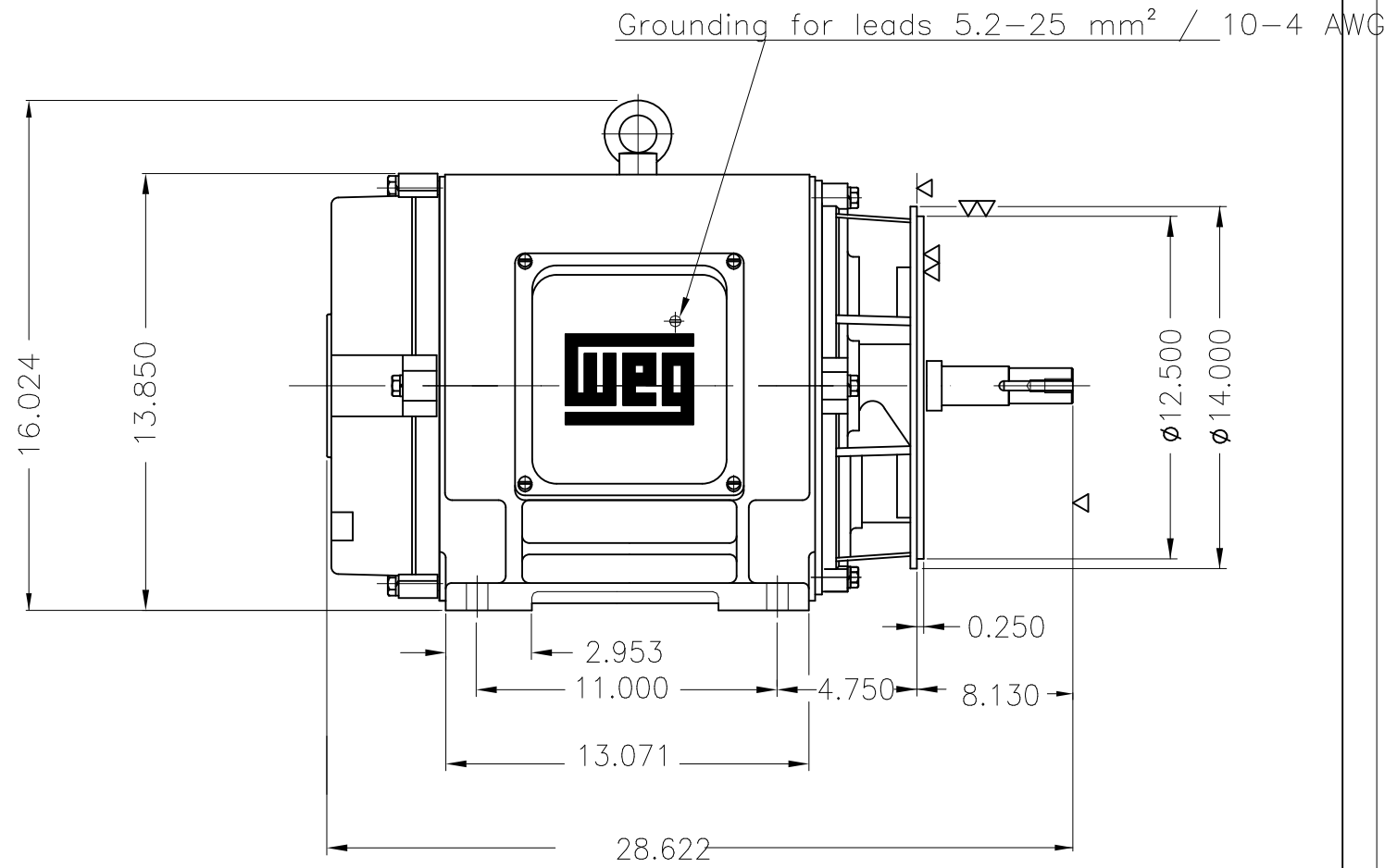
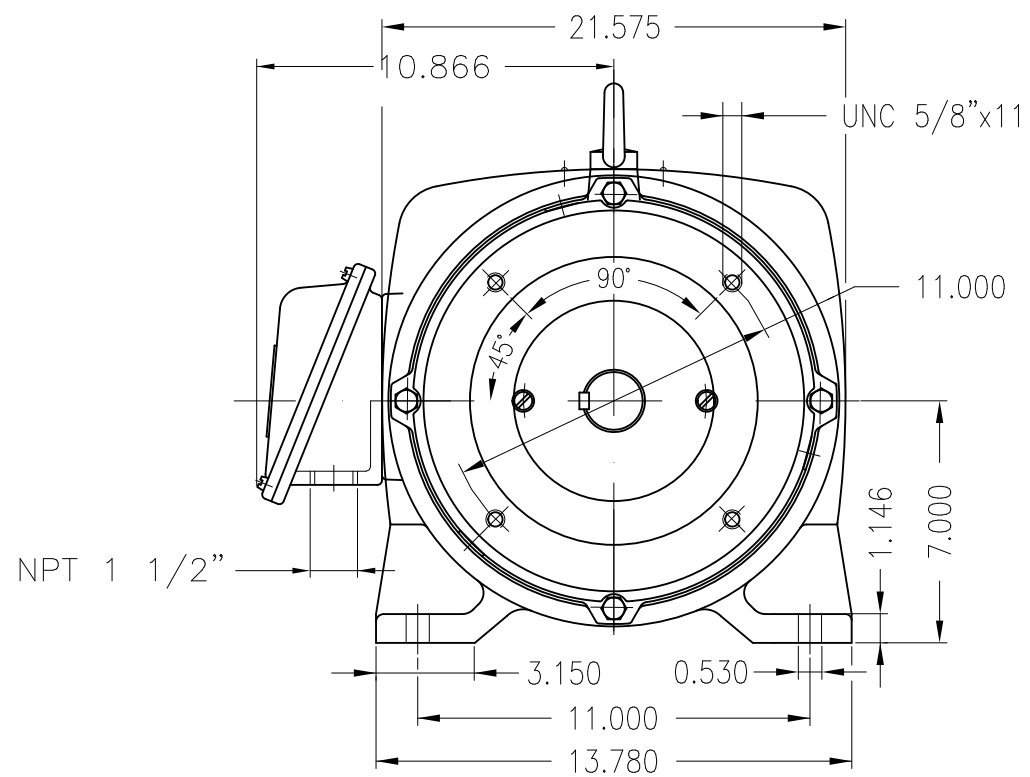


Performance : 575 V 60 Hz 4P

Rated current : 29.2 A  
LRC : 5.8  
Rated torque : 12.4 kgfm  
Locked rotor torque : 229 %  
Breakdown torque : 240 %  
Rated speed : 1760 rpm

Moment of inertia (J) : 0.1121 kgm<sup>2</sup>  
Duty cycle : Cont.(S1)  
Insulation class : F  
Service factor : 1.15  
Temperature rise : 80 K  
Design : B

Rev.	Changes Summary	Performed	Checked	Date
Performed by			Page	Revision
Checked by				
Date				



Color RAL 7022  
 Painting plan 203A  
 Mounting NEMA F-1  
 Mounting B34R(D)

30 HP 04 Poles 60 Hz

A

ECM		LOC	SUMMARY OF MODIFICATIONS			HYBRISUSER					00
EXECUTED	HYBRISUSER			THREE PH. MOTOR JM/JP/JET PUMP			<b>PREVIEW</b> WDD   00 				
CHECKED				FRAME 286JP IP23 ODP							
RELEASED											
REL. DATE											
		WMO	Jaragua do Sul	Product Engineering	SHEET	1 / 1					