

DATA SHEET



Three Phase Induction Motor - Squirrel Cage

Customer :

Product line : W22 Close Coupled Pump JP NEMA Premium Efficiency Three-Phase
Product code : 12602710

Frame : 284/6JP	Cooling method : IC411 - TEFC
Insulation class : F	Mounting : F-1
Duty cycle : Cont.(S1)	Rotation ¹ : Both (CW and CCW)
Ambient temperature : -20°C to +40°C	Starting method : Direct On Line
Altitude : 1000 m.a.s.l.	Approx. weight ² : 187 kg
Protection degree : IP55	Moment of inertia (J) : 0.2153 kgm ²
Design : B	

Output [HP]	25	20	20	20	25	25	25
Poles	4	4	4	4	4	4	4
Frequency [Hz]	60	50	50	50	50	50	50
Rated voltage [V]	230/460	380	400	415	380	400	415
Rated current [A]	59.0/29.5	29.1	28.2	27.5	35.9	34.3	33.2
L. R. Amperes [A]	366/183	175	189	198	190	189	196
LRC [A]	6.2x(Code G)	6.0x(Code G)	6.7x(Code H)	7.2x(Code J)	5.3x(Code F)	5.5x(Code F)	5.9x(Code G)
No load current [A]	22.0/11.0	11.0	11.7	12.4	11.0	11.7	12.4
Rated speed [RPM]	1770	1470	1473	1475	1455	1460	1465
Slip [%]	1.67	2.00	1.80	1.67	3.00	2.67	2.33
Rated torque [kgfm]	10.3	9.87	9.85	9.84	12.5	12.4	12.4
Locked rotor torque [%]	240	229	250	270	180	200	220
Breakdown torque [%]	270	260	300	330	210	240	260
Service factor	1.25	1.00	1.00	1.00	1.00	1.00	1.00
Temperature rise	80 K	80 K	80 K	80 K	105 K	105 K	105 K
Locked rotor time	43s (cold) 24s (hot)	32s (cold) 18s (hot)	32s (cold) 18s (hot)	32s (cold) 18s (hot)	25s (cold) 14s (hot)	25s (cold) 14s (hot)	25s (cold) 14s (hot)
Noise level ²	63.0 dB(A)	61.0 dB(A)	61.0 dB(A)	61.0 dB(A)	61.0 dB(A)	61.0 dB(A)	61.0 dB(A)
Efficiency (%)	25%						
	50%	92.4	91.3	91.3	91.2	92.4	92.4
	75%	93.0	92.1	92.5	92.5	91.7	92.4
	100%	93.6	92.1	92.6	92.7	91.0	92.4
Power Factor	25%						
	50%	0.70	0.69	0.65	0.62	0.76	0.73
	75%	0.80	0.80	0.78	0.75	0.84	0.82
	100%	0.84	0.85	0.83	0.82	0.86	0.84

Losses at normative operating points (speed;torque), in percentage of rated output power

Losses (%)	P1 (0,9;1,0)	6.8	6.8	6.8	6.8	6.8	6.8
	P2 (0,5;1,0)	5.8	5.8	5.8	5.8	5.8	5.8
	P3 (0,25;1,0)	5.3	5.3	5.3	5.3	5.3	5.3
	P4 (0,9;0,5)	3.1	3.1	3.1	3.1	3.1	3.1
	P5 (0,5;0,5)	2.2	2.2	2.2	2.2	2.2	2.2
	P6 (0,5;0,25)	1.4	1.4	1.4	1.4	1.4	1.4
	P7 (0,25;0,25)	1.0	1.0	1.0	1.0	1.0	1.0

	<u>Drive end</u>	<u>Non drive end</u>	Foundation loads
Bearing type :	6311 C3	6211 C3	Max. traction : 367 kgf
Sealing :	V'Ring	V'Ring	Max. compression : 554 kgf
Lubrication interval :	20000 h	20000 h	
Lubricant amount :	18 g	11 g	
Lubricant type :	Mobil Polyrex EM		

Rev.	Changes Summary	Performed	Checked	Date
Performed by				
Checked by			Page	Revision
Date	24/10/2024		1 / 9	

DATA SHEET

Three Phase Induction Motor - Squirrel Cage



Customer : _____

Notes

USABLE @208V 65.2A SF 1.15 SFA 75.0A

This revision replaces and cancel the previous one, which must be eliminated.

- (1) Looking the motor from the shaft end.
- (2) Measured at 1m and with tolerance of +3dB(A).
- (3) Approximate weight subject to changes after manufacturing process.
- (4) At 100% of full load.

These are average values based on tests with sinusoidal power supply, subject to the tolerances stipulated in NEMA MG-1.

Rev.	Changes Summary	Performed	Checked	Date
Performed by				
Checked by			Page	Revision
Date	24/10/2024		2 / 9	

LOAD PERFORMANCE CURVE

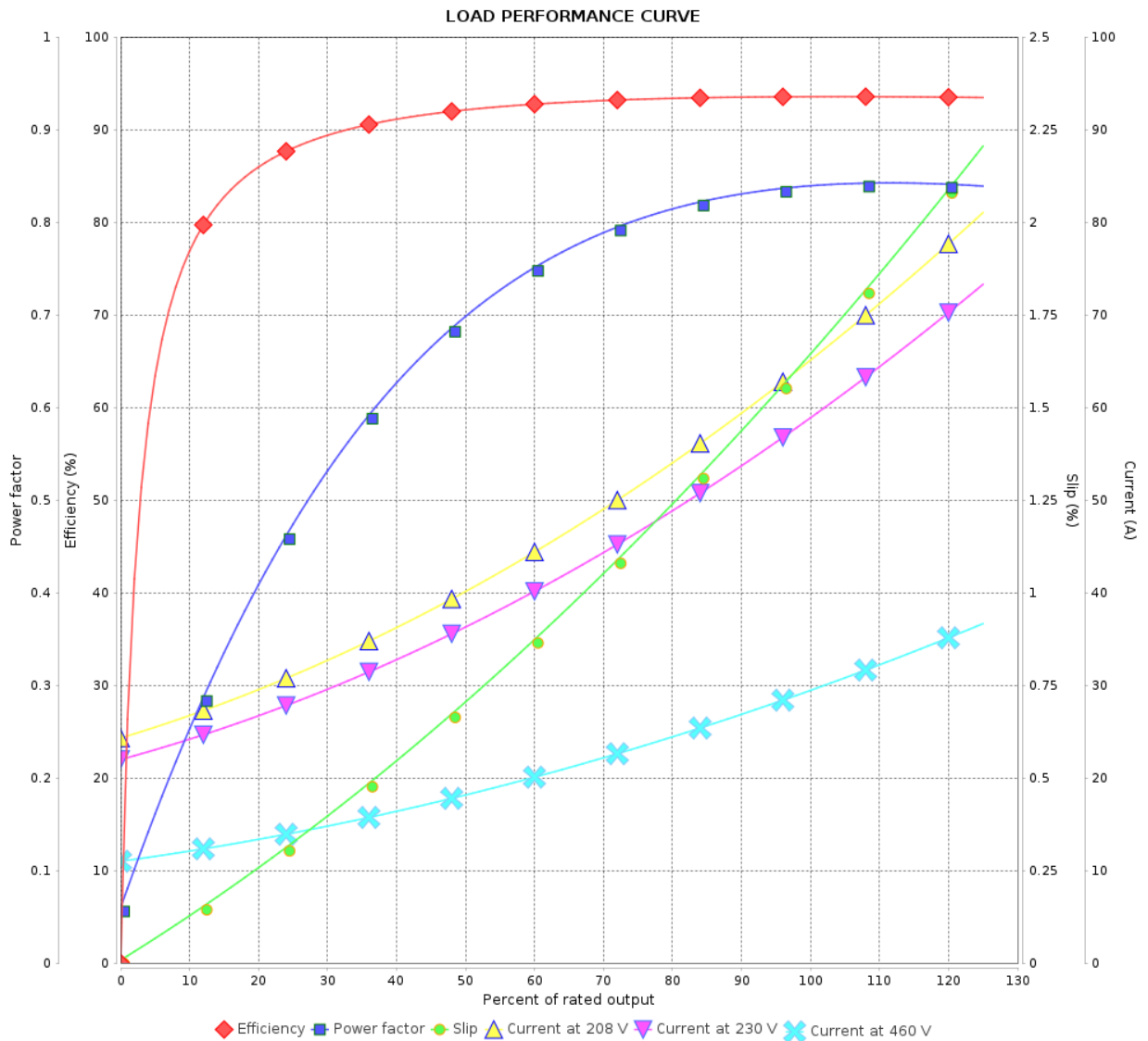
Three Phase Induction Motor - Squirrel Cage



Customer :

Product line : W22 Close Coupled Pump JP
NEMA Premium Efficiency Three-Phase

Product code : 12602710



Performance : 230/460 V 60 Hz 4P

Rated current : 59.0/29.5 A
LRC : 6.2
Rated torque : 10.3 kgfm
Locked rotor torque : 240 %
Breakdown torque : 270 %
Rated speed : 1770 rpm

Moment of inertia (J) : 0.2153 kgm²
Duty cycle : Cont.(S1)
Insulation class : F
Service factor : 1.25
Temperature rise : 80 K
Design : B

Rev.	Changes Summary	Performed	Checked	Date
Performed by			Page	Revision
Checked by				
Date				

LOAD PERFORMANCE CURVE

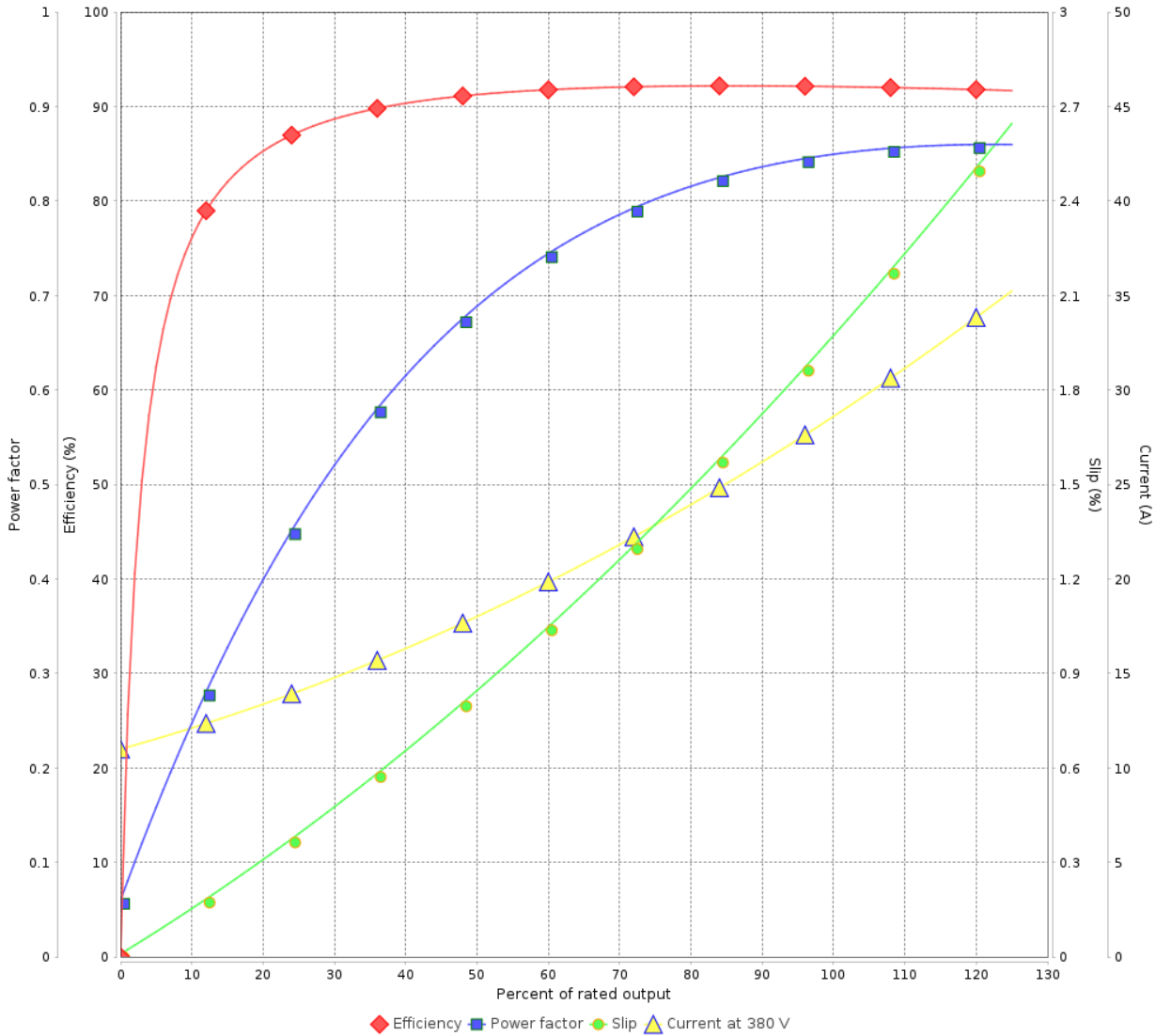
Three Phase Induction Motor - Squirrel Cage



Customer :

Product line : W22 Close Coupled Pump JP
 NEMA Premium Efficiency Three-Phase
 Product code : 12602710

LOAD PERFORMANCE CURVE



Performance : 380 V 50 Hz 4P IE3

Rated current	: 29.1 A	Moment of inertia (J)	: 0.2153 kgm ²
LRC	: 6.0	Duty cycle	: Cont.(S1)
Rated torque	: 9.87 kgfm	Insulation class	: F
Locked rotor torque	: 229 %	Service factor	: 1.00
Breakdown torque	: 260 %	Temperature rise	: 80 K
Rated speed	: 1470 rpm	Design	: B

Rev.	Changes Summary	Performed	Checked	Date
Performed by			Page	Revision
Checked by			4 / 9	
Date	24/10/2024			

LOAD PERFORMANCE CURVE

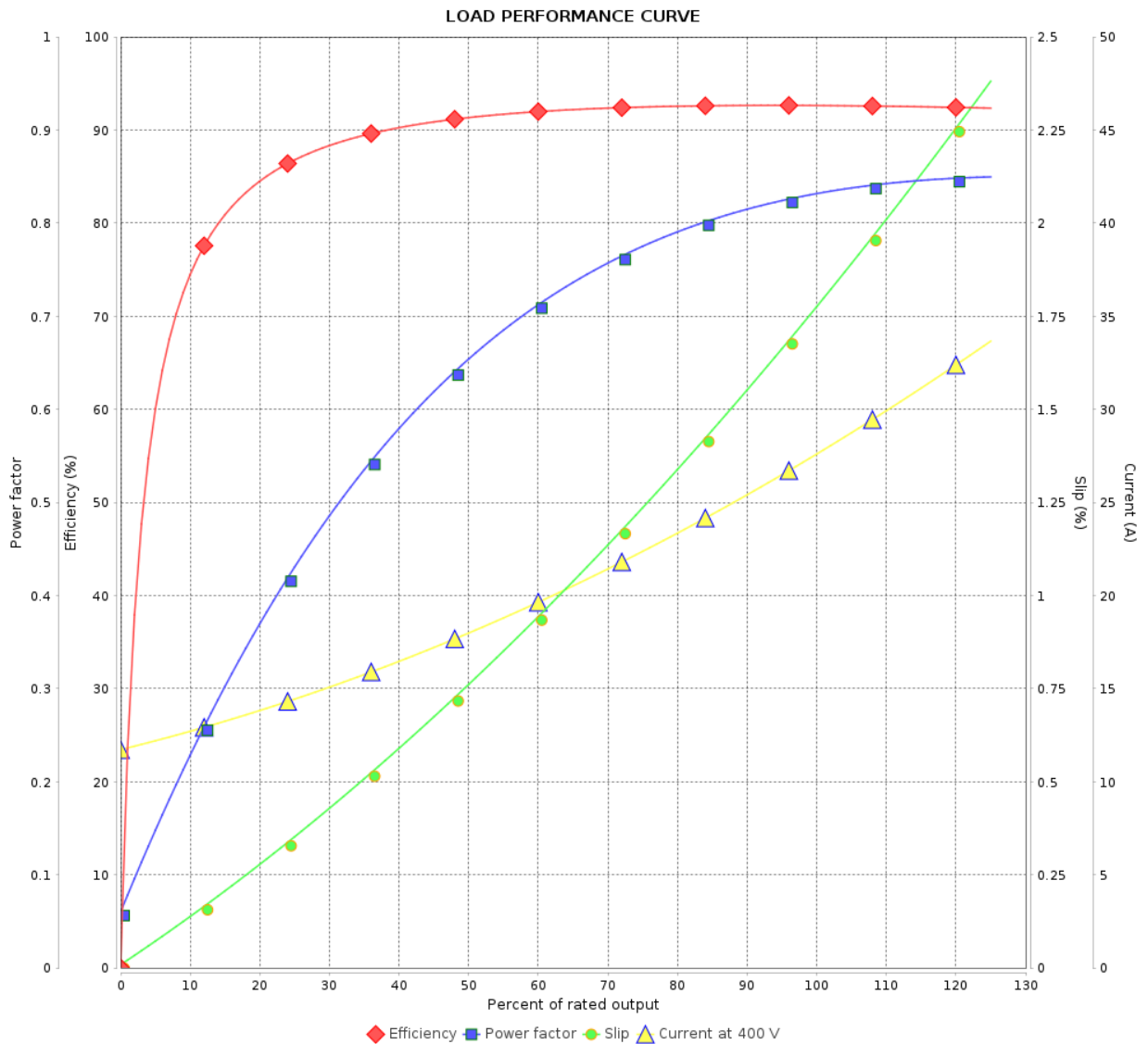
Three Phase Induction Motor - Squirrel Cage



Customer :

Product line : W22 Close Coupled Pump JP
NEMA Premium Efficiency Three-Phase

Product code : 12602710



Performance : 400 V 50 Hz 4P IE3

Rated current : 28.2 A
LRC : 6.7
Rated torque : 9.85 kgfm
Locked rotor torque : 250 %
Breakdown torque : 300 %
Rated speed : 1473 rpm

Moment of inertia (J) : 0.2153 kgm²
Duty cycle : Cont.(S1)
Insulation class : F
Service factor : 1.00
Temperature rise : 80 K
Design : B

Rev.	Changes Summary	Performed	Checked	Date
Performed by			Page	Revision
Checked by				
Date				

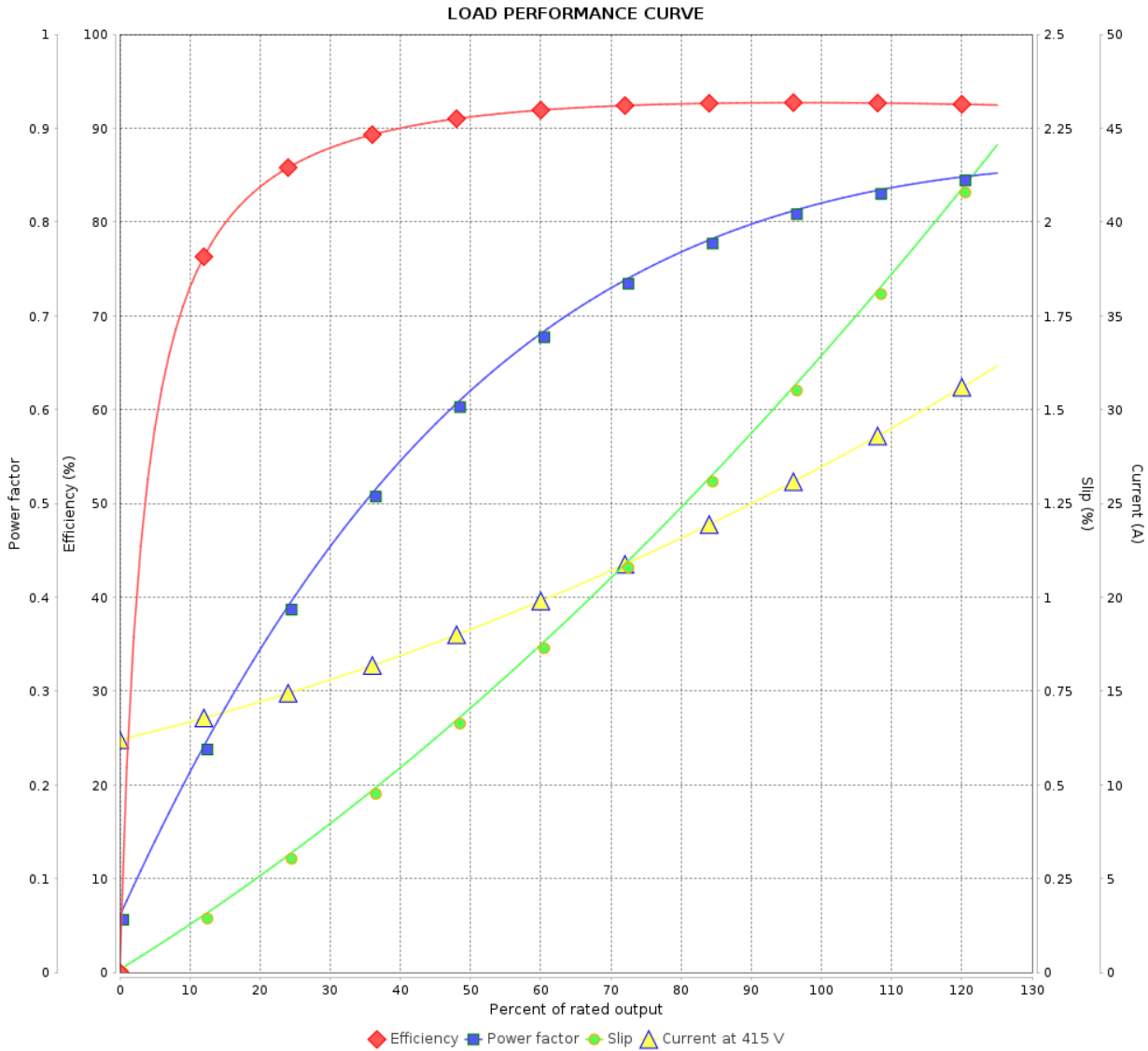
LOAD PERFORMANCE CURVE

Three Phase Induction Motor - Squirrel Cage



Customer :

Product line : W22 Close Coupled Pump JP
 NEMA Premium Efficiency Three-Phase
 Product code : 12602710



Performance : 415 V 50 Hz 4P IE3

Rated current	: 27.5 A	Moment of inertia (J)	: 0.2153 kgm ²
LRC	: 7.2	Duty cycle	: Cont.(S1)
Rated torque	: 9.84 kgfm	Insulation class	: F
Locked rotor torque	: 270 %	Service factor	: 1.00
Breakdown torque	: 330 %	Temperature rise	: 80 K
Rated speed	: 1475 rpm	Design	: B

Rev.	Changes Summary	Performed	Checked	Date
Performed by			Page	Revision
Checked by			6 / 9	
Date	24/10/2024			

LOAD PERFORMANCE CURVE

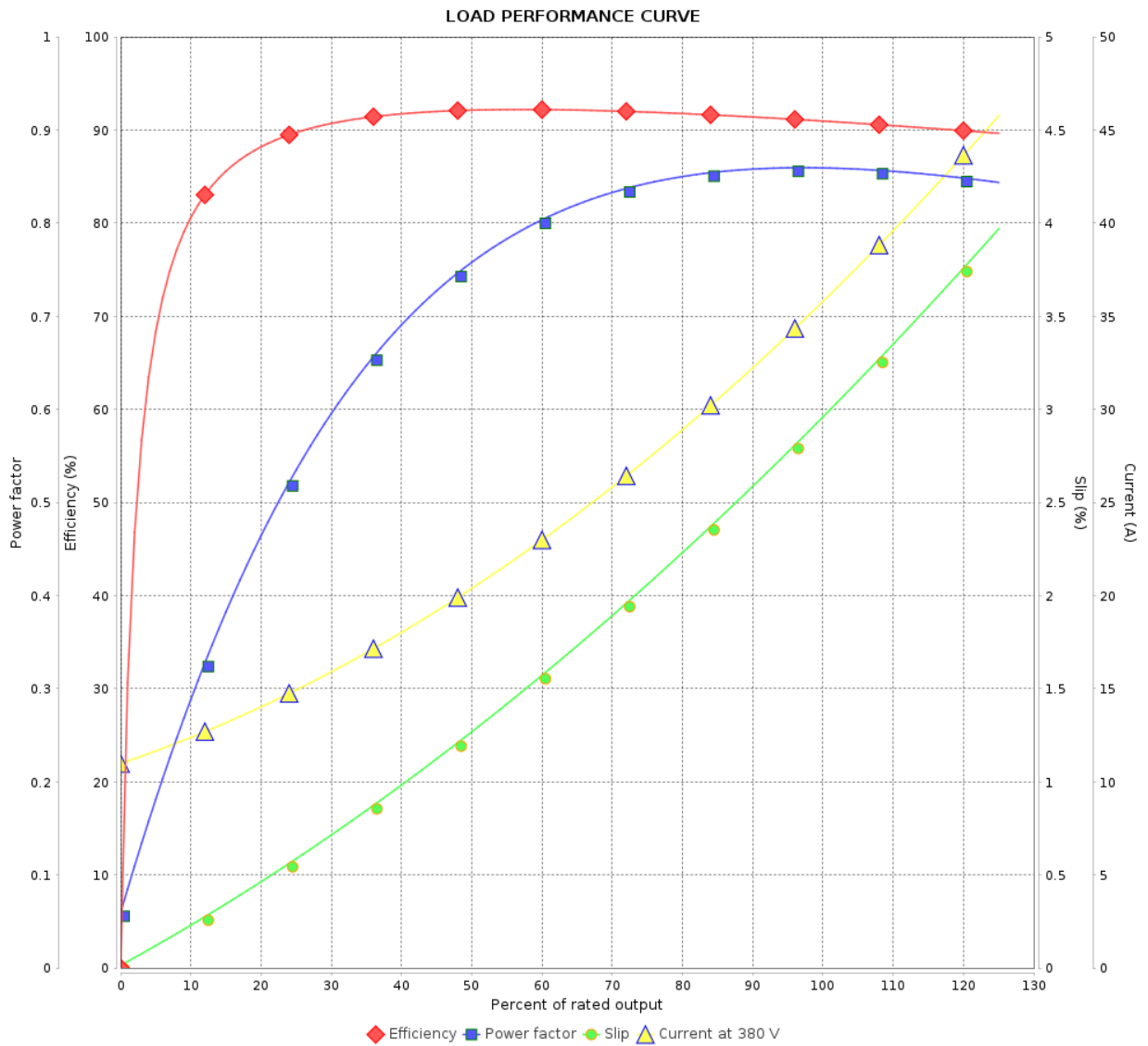
Three Phase Induction Motor - Squirrel Cage



Customer :

Product line : W22 Close Coupled Pump JP
NEMA Premium Efficiency Three-Phase

Product code : 12602710



Performance : 380 V 50 Hz 4P IE1

Rated current : 35.9 A
LRC : 5.3
Rated torque : 12.5 kgfm
Locked rotor torque : 180 %
Breakdown torque : 210 %
Rated speed : 1455 rpm

Moment of inertia (J) : 0.2153 kgm²
Duty cycle : Cont.(S1)
Insulation class : F
Service factor : 1.00
Temperature rise : 105 K
Design : B

Rev.	Changes Summary	Performed	Checked	Date
Performed by			Page	Revision
Checked by				
Date				

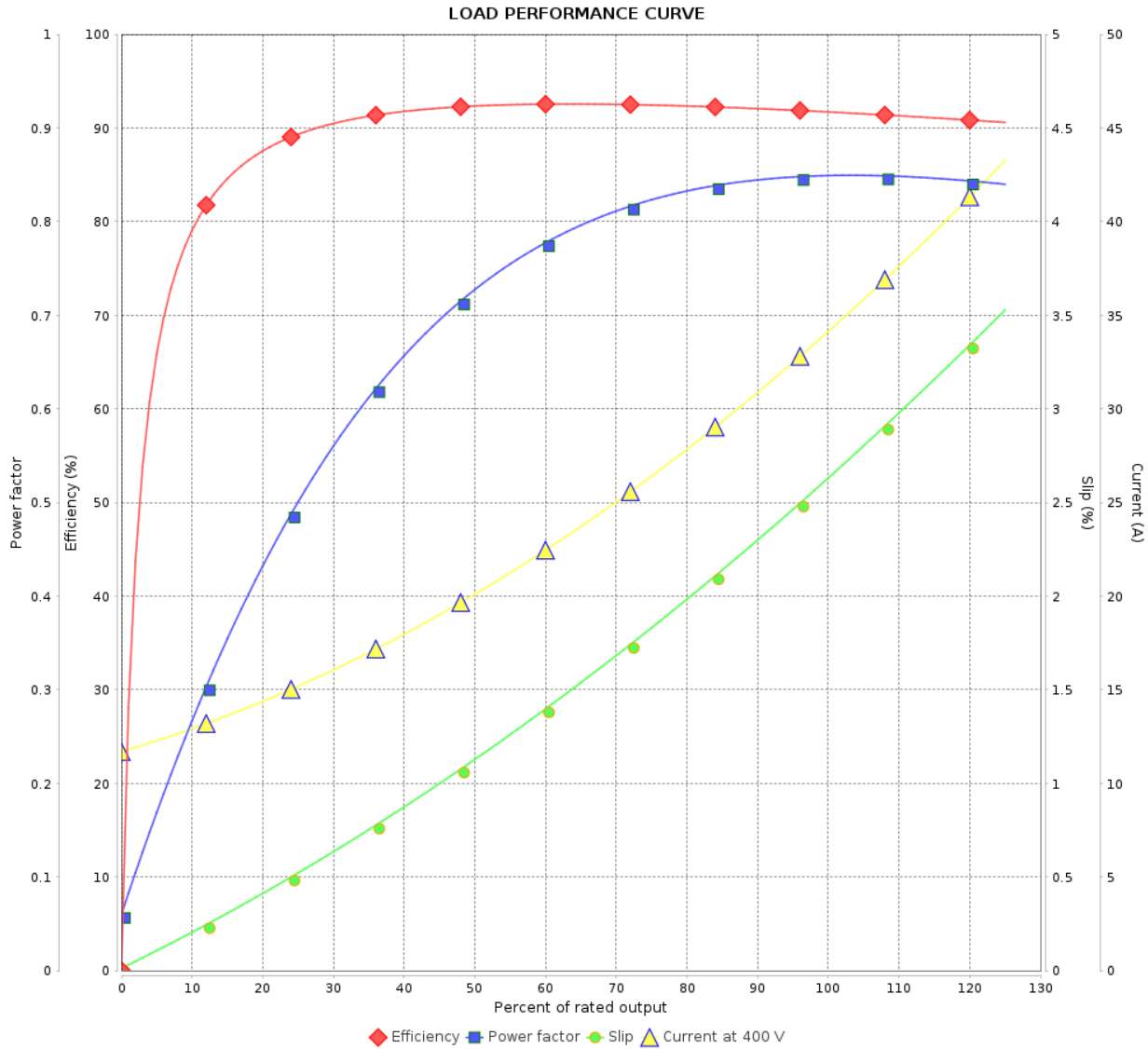
LOAD PERFORMANCE CURVE

Three Phase Induction Motor - Squirrel Cage



Customer :

Product line : W22 Close Coupled Pump JP
 NEMA Premium Efficiency Three-Phase
 Product code : 12602710



Performance : 400 V 50 Hz 4P IE2

Rated current	: 34.3 A	Moment of inertia (J)	: 0.2153 kgm ²
LRC	: 5.5	Duty cycle	: Cont.(S1)
Rated torque	: 12.4 kgfm	Insulation class	: F
Locked rotor torque	: 200 %	Service factor	: 1.00
Breakdown torque	: 240 %	Temperature rise	: 105 K
Rated speed	: 1460 rpm	Design	: B

Rev.	Changes Summary	Performed	Checked	Date
Performed by			Page 8 / 9	Revision
Checked by				
Date	24/10/2024			

LOAD PERFORMANCE CURVE

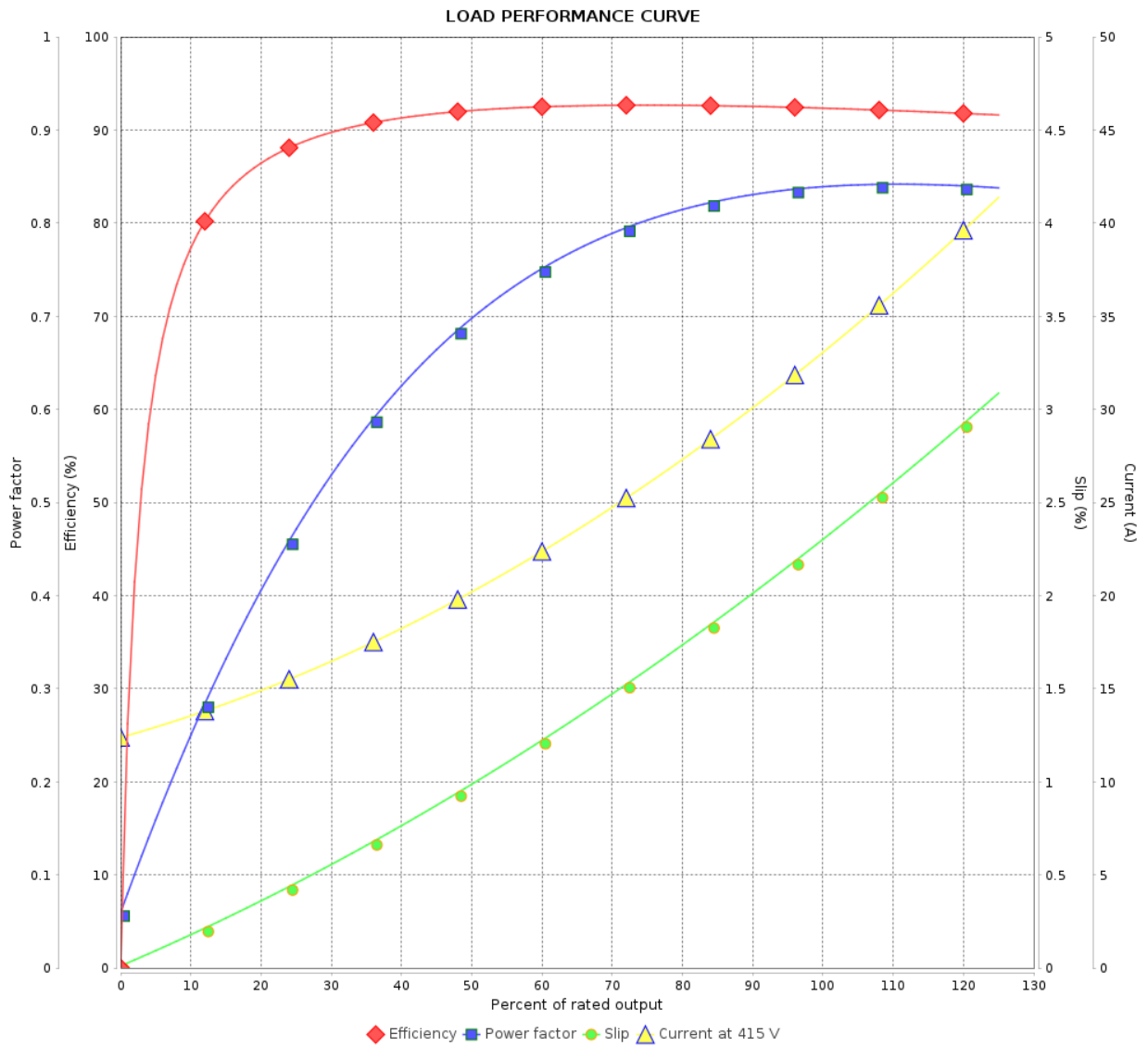
Three Phase Induction Motor - Squirrel Cage



Customer :

Product line : W22 Close Coupled Pump JP
NEMA Premium Efficiency Three-Phase

Product code : 12602710

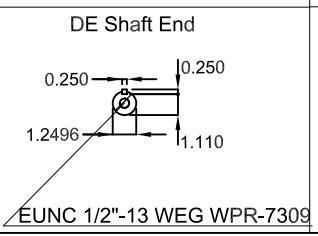
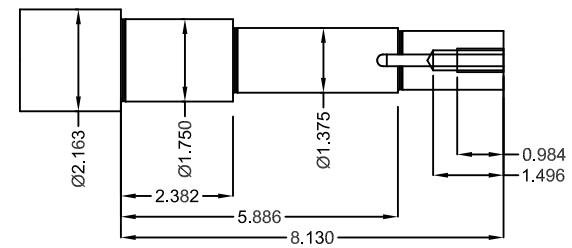
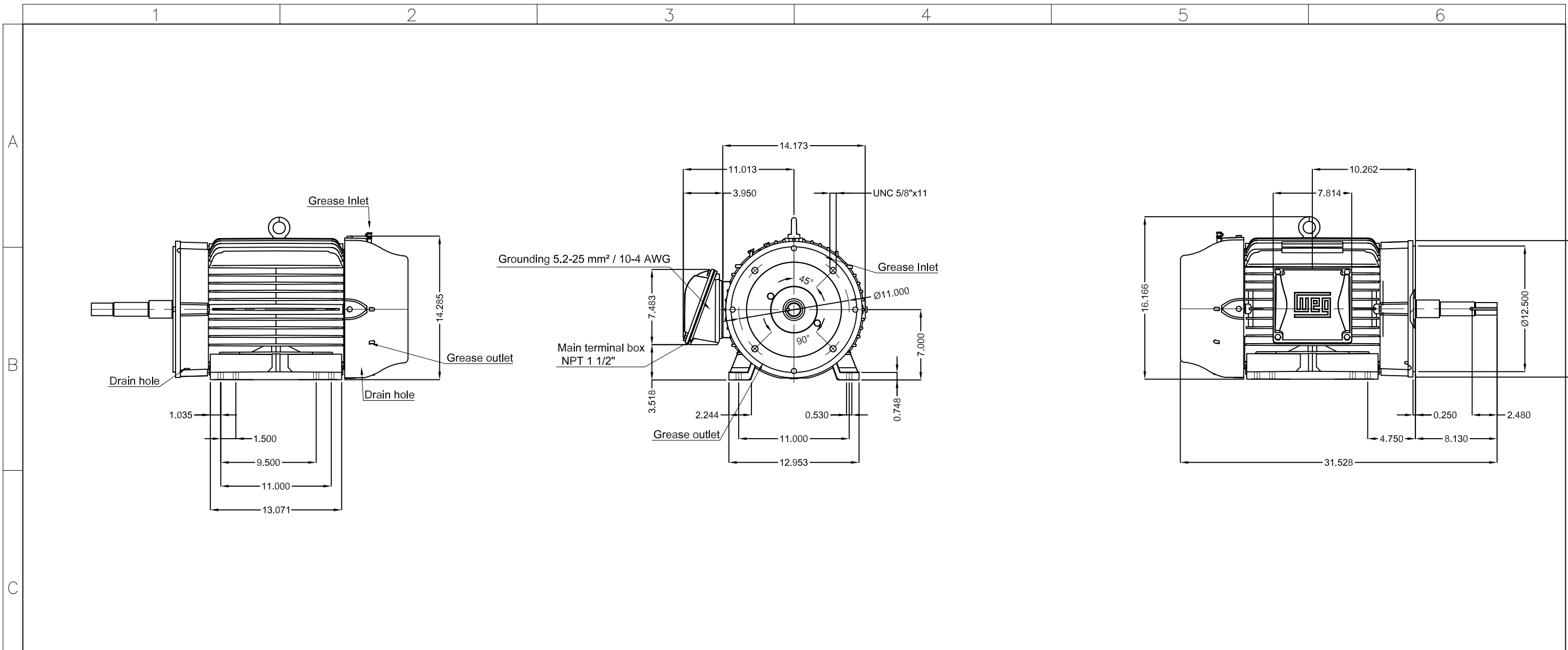


Performance : 415 V 50 Hz 4P IE2

Rated current : 33.2 A
LRC : 5.9
Rated torque : 12.4 kgfm
Locked rotor torque : 220 %
Breakdown torque : 260 %
Rated speed : 1465 rpm

Moment of inertia (J) : 0.2153 kgm²
Duty cycle : Cont.(S1)
Insulation class : F
Service factor : 1.00
Temperature rise : 105 K
Design : B

Rev.	Changes Summary	Performed	Checked	Date
Performed by			Page	Revision
Checked by				
Date				



Color RAL 5009
 Painting plan 203A
 Mounting NEMA F-1
 Mounting B34R(D)

25 HP 04 Poles 60 Hz										A	
HYBRISUSER										00	
ECM	LOC	SUMMARY OF MODIFICATIONS					EXECUTED	CHECKED	RELEASED	DATE	VER
EXECUTED	HYBRISUSER	THREE PH. MOTOR JM/JP/JET PUMP W22 NEMA PREM. EFF. FRAME 284/6JP IP55 TEFC					EXECUTED	CHECKED	RELEASED	DATE	VER
CHECKED							EXECUTED	CHECKED	RELEASED	DATE	VER
RELEASED							EXECUTED	CHECKED	RELEASED	DATE	VER
REL. DATE							EXECUTED	CHECKED	RELEASED	DATE	VER
						PREVIEW		WDD 00		SHEET /	

