

# DATA SHEET



## Three Phase Induction Motor - Squirrel Cage

Customer :

Product line : W22 Close Coupled Pump JP      Product code : 12712077  
 NEMA Premium Efficiency Three-Phase

Frame	: 254/6JP	Locked rotor time	: 54s (cold) 30s (hot)
Output	: 20 HP (15 kW)	Temperature rise	: 80 K
Poles	: 4	Duty cycle	: Cont.(S1)
Frequency	: 60 Hz	Ambient temperature	: -20°C to +40°C
Rated voltage	: 575 V	Altitude	: 1000 m.a.s.l.
Rated current	: 19.3 A	Protection degree	: IP55
L. R. Amperes	: 133 A	Cooling method	: IC411 - TEFC
LRC	: 6.9x(Code G)	Mounting	: F-1
No load current	: 7.68 A	Rotation <sup>1</sup>	: Both (CW and CCW)
Rated speed	: 1770 rpm	Noise level <sup>2</sup>	: 64.0 dB(A)
Slip	: 1.67 %	Starting method	: Direct On Line
Rated torque	: 8.20 kgfm	Approx. weight <sup>3</sup>	: 152 kg
Locked rotor torque	: 240 %		
Breakdown torque	: 260 %		
Insulation class	: F		
Service factor	: 1.25		
Moment of inertia (J)	: 0.1305 kgm <sup>2</sup>		
Design	: B		

Output	50%	75%	100%	Foundation loads	
Efficiency (%)	91.7	92.4	93.0	Max. traction	: 259 kgf
Power Factor	0.68	0.79	0.84	Max. compression	: 411 kgf

Losses at normative operating points (speed;torque), in percentage of rated output power

P1 (0,9;1,0)	P2 (0,5;1,0)	P3 (0,25;1,0)	P4 (0,9;0,5)	P5 (0,5;0,5)	P6 (0,5;0,25)	P7 (0,25;0,25)
7.5	6.4	5.8	3.6	2.5	1.6	1.1

	Drive end	Non drive end
Bearing type	: 6309 C3	: 6209 C3
Sealing	: V'Ring	: V'Ring
Lubrication interval	: 20000 h	: 20000 h
Lubricant amount	: 13 g	: 9 g
Lubricant type	: Mobil Polyrex EM	

Notes

This revision replaces and cancel the previous one, which must be eliminated.

- (1) Looking the motor from the shaft end.
- (2) Measured at 1m and with tolerance of +3dB(A).
- (3) Approximate weight subject to changes after manufacturing process.
- (4) At 100% of full load.

These are average values based on tests with sinusoidal power supply, subject to the tolerances stipulated in NEMA MG-1.

Rev.	Changes Summary	Performed	Checked	Date
Performed by		Page		Revision
Checked by		1 / 2		
Date	24/10/2024			

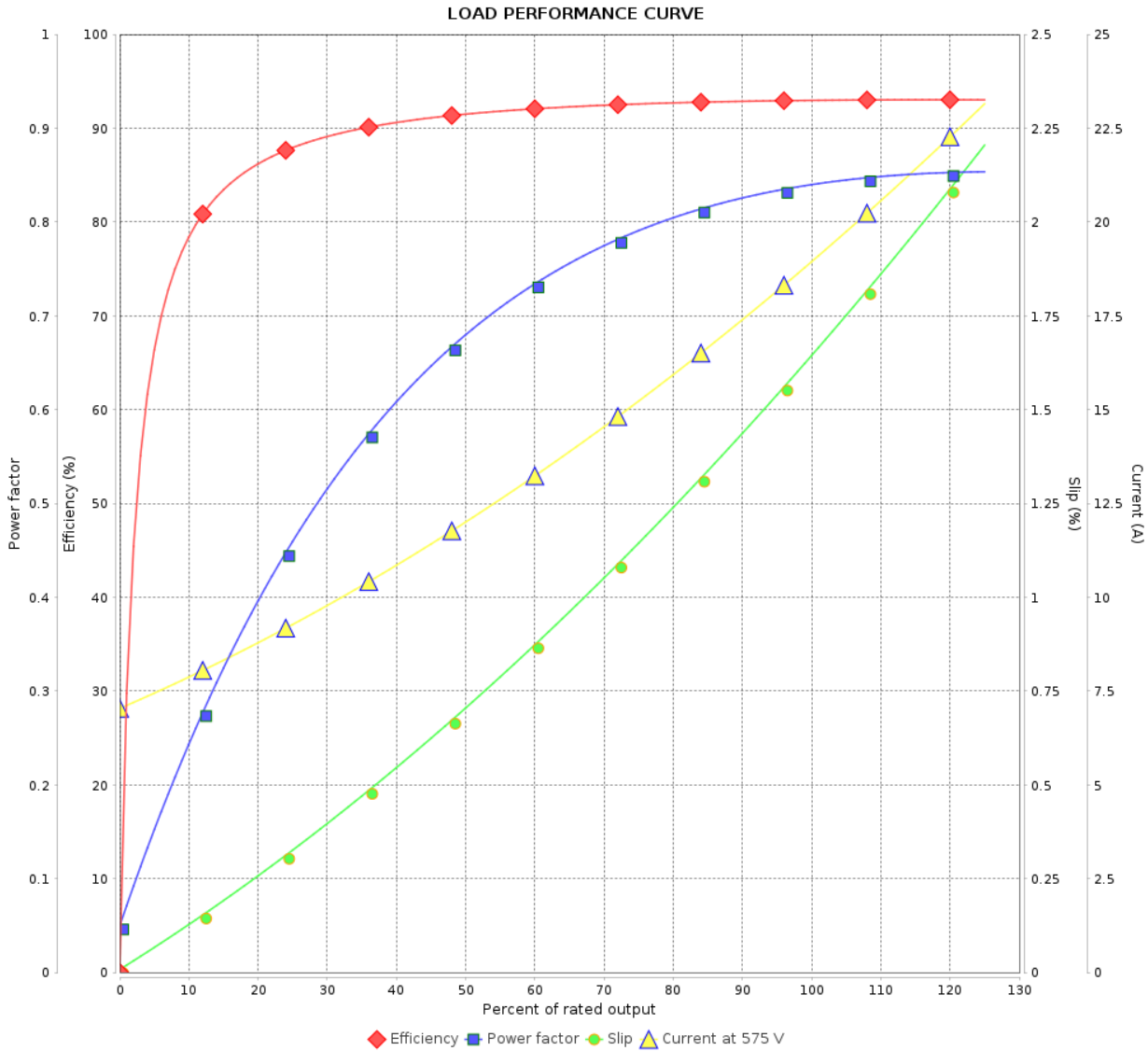
# LOAD PERFORMANCE CURVE

Three Phase Induction Motor - Squirrel Cage



Customer :

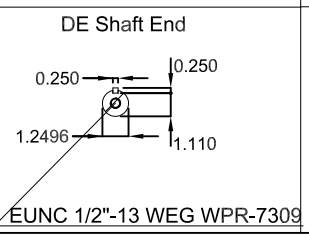
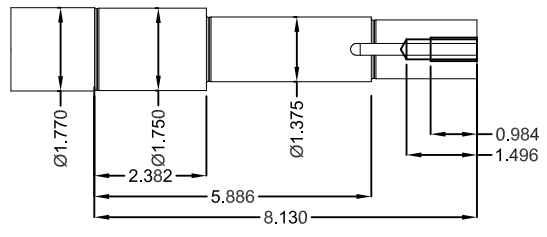
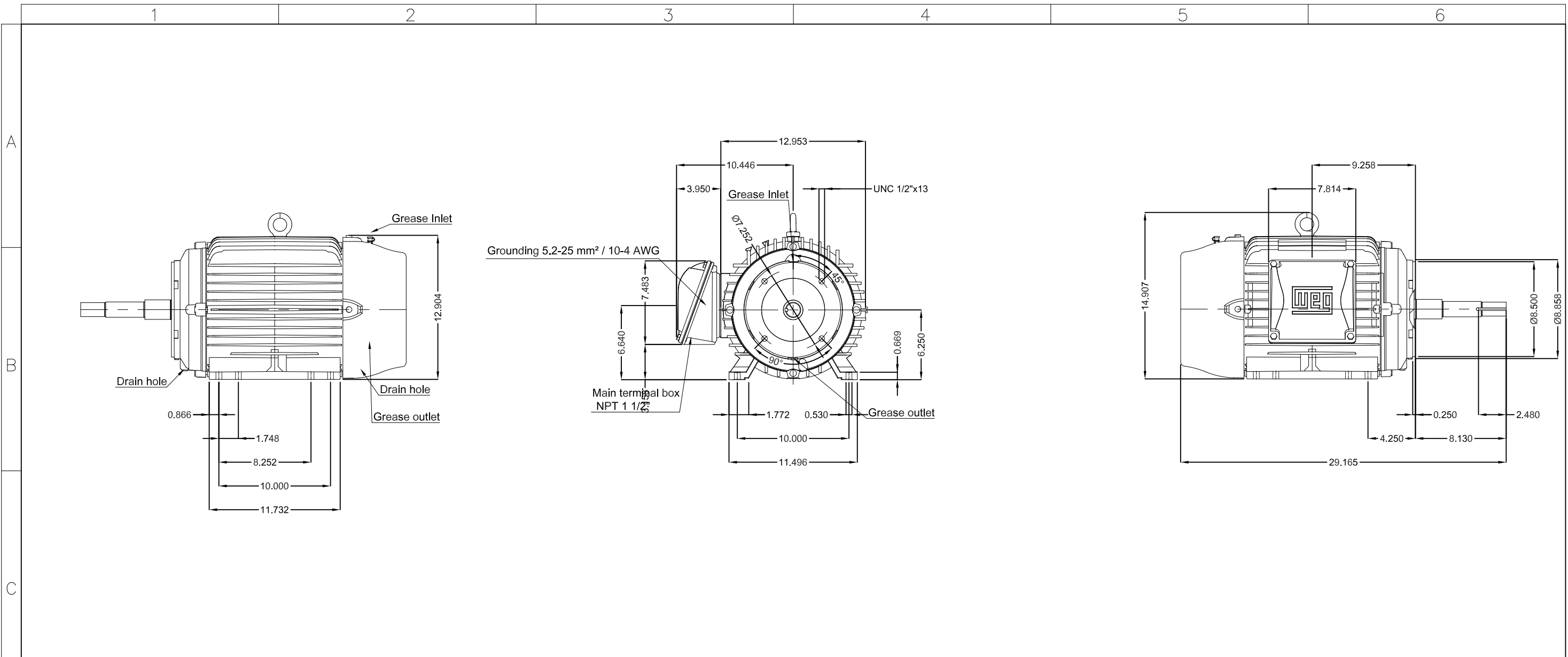
Product line : W22 Close Coupled Pump JP  
 NEMA Premium Efficiency Three-Phase  
 Product code : 12712077



Performance : 575 V 60 Hz 4P

Rated current	: 19.3 A	Moment of inertia (J)	: 0.1305 kgm <sup>2</sup>
LRC	: 6.9	Duty cycle	: Cont.(S1)
Rated torque	: 8.20 kgfm	Insulation class	: F
Locked rotor torque	: 240 %	Service factor	: 1.25
Breakdown torque	: 260 %	Temperature rise	: 80 K
Rated speed	: 1770 rpm	Design	: B

Rev.	Changes Summary	Performed	Checked	Date
Performed by			Page 2 / 2	Revision
Checked by				
Date	24/10/2024			



Color RAL 5009  
 Painting plan 203A  
 Mounting NEMA F-1  
 Mounting B34R(D)

20 HP 04 Poles 60 Hz						A
HYBRISUSER						00
ECM	LOC	SUMMARY OF MODIFICATIONS	EXECUTED	CHECKED	RELEASED	DATE VER
EXECUTED	HYBRISUSER	THREE PH. MOTOR JM/JP/JET PUMP W22 NEMA PREM. EFF.				
CHECKED		FRAME 254/6JP IP55 TEFC				
RELEASED						
REL. DATE						
			PREVIEW		WDD 00	
			SHEET /		WEG	