

# DATA SHEET



## Three Phase Induction Motor - Squirrel Cage

Customer					
Product line	: JP Pump NEMA Premium Efficiency Three-Phase	Product code :	13311846		
Frame	: 254/6JP	Cooling method	: IC411 - TEFC		
Insulation class	: F	Mounting	: F-1		
Duty cycle	: Cont.(S1)	Rotation <sup>1</sup>	: Both (CW and CCW)		
Ambient temperature	: -20°C to +40°C	Starting method	: Direct On Line		
Altitude	: 1000 m.a.s.l.	Approx. weight <sup>3</sup>	: 117 kg		
Protection degree	: IP55	Moment of inertia (J)	: 0.1113 kgm <sup>2</sup>		
Design	: B				
Output [HP]	20				
Poles	4				
Frequency [Hz]	60				
Rated voltage [V]	575				
Rated current [A]	19.8				
L. R. Amperes [A]	132				
LRC [A]	6.7x(Code H)				
No load current [A]	8.89				
Rated speed [RPM]	1765				
Slip [%]	1.94				
Rated torque [kgfm]	8.22				
Locked rotor torque [%]	270				
Breakdown torque [%]	300				
Service factor	1.15				
Temperature rise	80 K				
Locked rotor time	28s (cold) 16s (hot)				
Noise level <sup>2</sup>	68.0 dB(A)				
Efficiency (%)	25%	91.0			
	50%	91.7			
	75%	92.4			
	100%	93.0			
Power Factor	25%	0.40			
	50%	0.66			
	75%	0.77			
	100%	0.82			
Bearing type	: <u>Drive end</u> 6309 Z C3	<u>Non drive end</u> 6208 Z C3	Foundation loads		
Sealing	: V'Ring	Without Bearing Seal	Max. traction	: 330 kgf	
Lubrication interval	: 20000 h	20000 h	Max. compression	: 446 kgf	
Lubricant amount	: 13 g	8 g			
Lubricant type	: Mobil Polyrex EM				
Notes					
This revision replaces and cancel the previous one, which must be eliminated. (1) Looking the motor from the shaft end. (2) Measured at 1m and with tolerance of +3dB(A). (3) Approximate weight subject to changes after manufacturing process. (4) At 100% of full load.			These are average values based on tests with sinusoidal power supply, subject to the tolerances stipulated in NEMA MG-1.		
Rev.	Changes Summary		Performed	Checked	Date
Performed by					
Checked by					
Date	16/05/2022			Page	Revision
				1 / 2	

# LOAD PERFORMANCE CURVE

Three Phase Induction Motor - Squirrel Cage

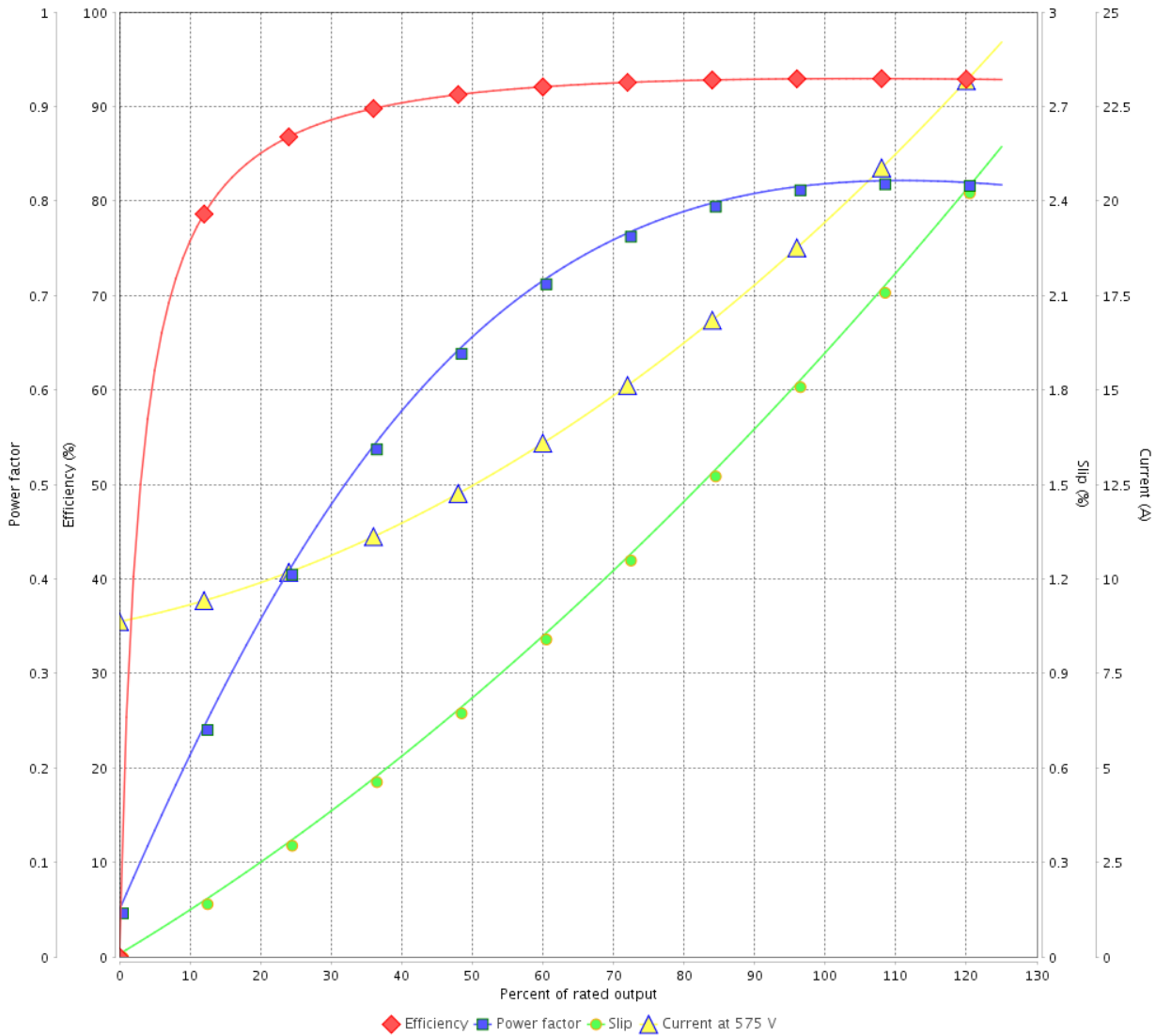


Customer : \_\_\_\_\_

Product line : JP Pump NEMA Premium  
Efficiency Three-Phase

Product code : 13311846

LOAD PERFORMANCE CURVE

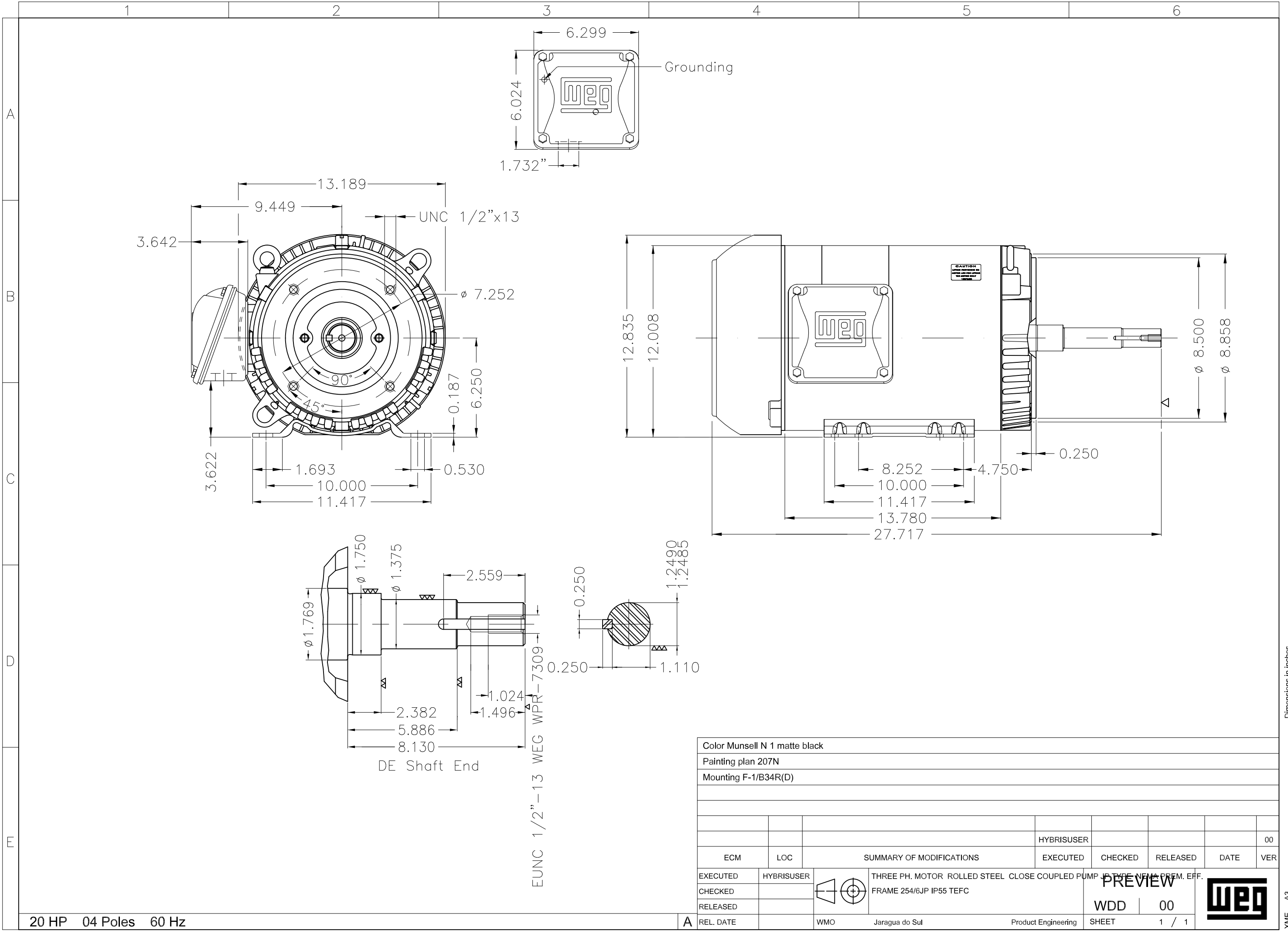


Performance : 575 V 60 Hz 4P

Rated current : 19.8 A  
LRC : 6.7  
Rated torque : 8.22 kgfm  
Locked rotor torque : 270 %  
Breakdown torque : 300 %  
Rated speed : 1765 rpm

Moment of inertia (J) : 0.1113 kgm<sup>2</sup>  
Duty cycle : Cont.(S1)  
Insulation class : F  
Service factor : 1.15  
Temperature rise : 80 K  
Design : B

Rev.	Changes Summary	Performed	Checked	Date
Performed by			Page 2 / 2	Revision
Checked by				
Date	16/05/2022			



20 HP 04 Poles 60 Hz

EUNC 1/2"-13 WEG WPR-7309

Color Munsell N 1 matte black					
Painting plan 207N					
Mounting F-1/B34R(D)					
			HYBRISUSER		00
ECM	LOC	SUMMARY OF MODIFICATIONS	EXECUTED	CHECKED	RELEASED DATE VER
EXECUTED	HYBRISUSER	THREE PH. MOTOR ROLLED STEEL CLOSE COUPLED PUMP IS TYPE NEMA PREM. EFF. FRAME 254/6JP IP55 TEFC			
CHECKED					
RELEASED					
REL. DATE		WMO Jaragua do Sul	Product Engineering	WDD	00 SHEET 1 / 1



Dimensions in inches XME A3