

DATA SHEET



Three Phase Induction Motor - Squirrel Cage

Customer :

Product line : W22 Close Coupled Pump JP
NEMA Premium Efficiency Three-Phase
Product code : 12602496

Frame	: 254/6JP	Cooling method	: IC411 - TEFC
Insulation class	: F	Mounting	: F-1
Duty cycle	: Cont.(S1)	Rotation ¹	: Both (CW and CCW)
Ambient temperature	: -20°C to +40°C	Starting method	: Direct On Line
Altitude	: 1000 m.a.s.l.	Approx. weight ²	: 134 kg
Protection degree	: IP55	Moment of inertia (J)	: 0.1104 kgm ²
Design	: B		

Output [HP]	15	10	10	10	15	15	15
Poles	4	4	4	4	4	4	4
Frequency [Hz]	60	50	50	50	50	50	50
Rated voltage [V]	230/460	380	400	415	380	400	415
Rated current [A]	36.0/18.0	15.2	14.8	14.5	21.5	20.5	20.0
L. R. Amperes [A]	230/115	109	115	120	105	111	118
LRC [A]	6.4x(Code G)	7.2x(Code J)	7.8x(Code J)	8.3x(Code K)	4.9x(Code E)	5.4x(Code F)	5.9x(Code G)
No load current [A]	14.0/7.00	6.70	7.10	7.40	7.10	7.60	7.40
Rated speed [RPM]	1768	1475	1480	1480	1455	1460	1465
Slip [%]	1.78	1.67	1.33	1.33	3.00	2.67	2.33
Rated torque [kgfm]	6.16	4.92	4.90	4.90	7.48	7.46	7.43
Locked rotor torque [%]	240	250	280	310	160	200	210
Breakdown torque [%]	260	300	340	370	200	220	240
Service factor	1.25	1.25	1.25	1.25	1.00	1.00	1.00
Temperature rise	80 K	80 K	80 K	80 K	80 K	80 K	80 K
Locked rotor time	55s (cold) 31s (hot)	72s (cold) 40s (hot)	63s (cold) 35s (hot)	57s (cold) 32s (hot)	41s (cold) 23s (hot)	41s (cold) 23s (hot)	37s (cold) 21s (hot)
Noise level ²	64.0 dB(A)	61.0 dB(A)	61.0 dB(A)	61.0 dB(A)	61.0 dB(A)	61.0 dB(A)	61.0 dB(A)
Efficiency (%)	25%	0.000					
	50%	91.0	88.8	88.6	88.3	91.0	91.0
	75%	91.7	90.3	90.3	90.3	90.2	91.0
	100%	92.4	90.4	90.6	90.8	90.2	91.0
Power Factor	25%	0.00					
	50%	0.68	0.65	0.62	0.59	0.74	0.69
	75%	0.78	0.77	0.74	0.72	0.82	0.79
	100%	0.83	0.83	0.81	0.79	0.86	0.84

Losses at normative operating points (speed;torque), in percentage of rated output power

Losses (%)	P1 (0,9;1,0)	8.1	8.1	8.1	8.1	8.1	8.1
	P2 (0,5;1,0)	6.8	6.8	6.8	6.8	6.8	6.8
	P3 (0,25;1,0)	6.3	6.3	6.3	6.3	6.3	6.3
	P4 (0,9;0,5)	3.9	3.9	3.9	3.9	3.9	3.9
	P5 (0,5;0,5)	2.7	2.7	2.7	2.7	2.7	2.7
	P6 (0,5;0,25)	1.8	1.8	1.8	1.8	1.8	1.8
	P7 (0,25;0,25)	1.2	1.2	1.2	1.2	1.2	1.2

	<u>Drive end</u>	<u>Non drive end</u>	Foundation loads
Bearing type	: 6309 C3	6209 C3	Max. traction : 213 kgf
Sealing	: V'Ring	V'Ring	Max. compression : 347 kgf
Lubrication interval	: 20000 h	20000 h	
Lubricant amount	: 13 g	9 g	
Lubricant type	: Mobil Polyrex EM		

Rev.	Changes Summary	Performed	Checked	Date
Performed by				
Checked by			Page	Revision
Date	24/10/2024		1 / 9	

DATA SHEET

Three Phase Induction Motor - Squirrel Cage



Customer : _____

Notes

USABLE @208V 39.8A SF 1.15 SFA 45.8A

This revision replaces and cancel the previous one, which must be eliminated.

- (1) Looking the motor from the shaft end.
- (2) Measured at 1m and with tolerance of +3dB(A).
- (3) Approximate weight subject to changes after manufacturing process.
- (4) At 100% of full load.

These are average values based on tests with sinusoidal power supply, subject to the tolerances stipulated in NEMA MG-1.

Rev.	Changes Summary	Performed	Checked	Date
Performed by				
Checked by				
Date	24/10/2024		Page 2 / 9	Revision

LOAD PERFORMANCE CURVE

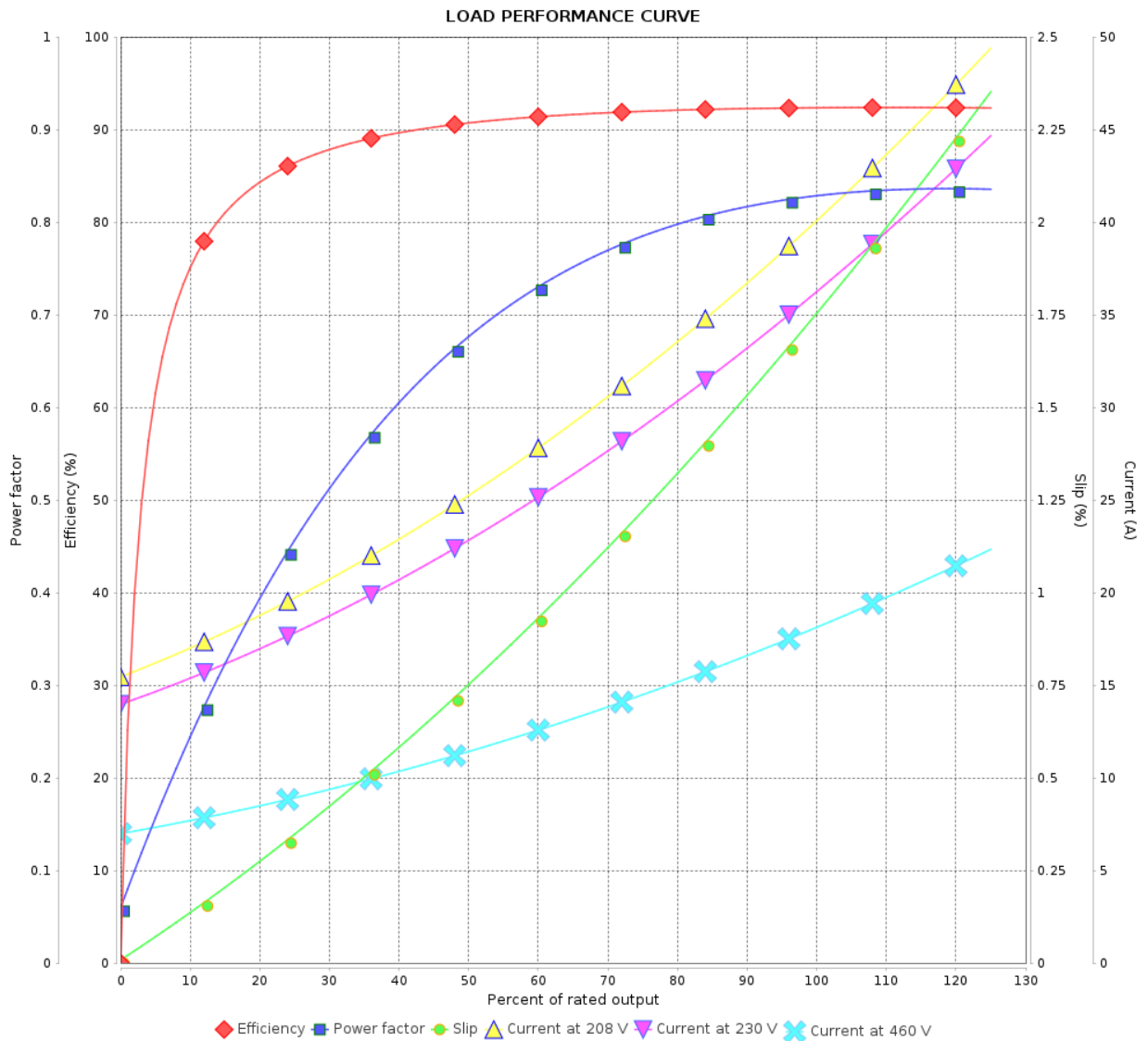
Three Phase Induction Motor - Squirrel Cage



Customer :

Product line : W22 Close Coupled Pump JP
NEMA Premium Efficiency Three-Phase

Product code : 12602496



Performance : 230/460 V 60 Hz 4P

Rated current : 36.0/18.0 A
LRC : 6.4
Rated torque : 6.16 kgfm
Locked rotor torque : 240 %
Breakdown torque : 260 %
Rated speed : 1768 rpm

Moment of inertia (J) : 0.1104 kgm²
Duty cycle : Cont.(S1)
Insulation class : F
Service factor : 1.25
Temperature rise : 80 K
Design : B

Rev.	Changes Summary	Performed	Checked	Date
Performed by			Page	Revision
Checked by				
Date				

LOAD PERFORMANCE CURVE

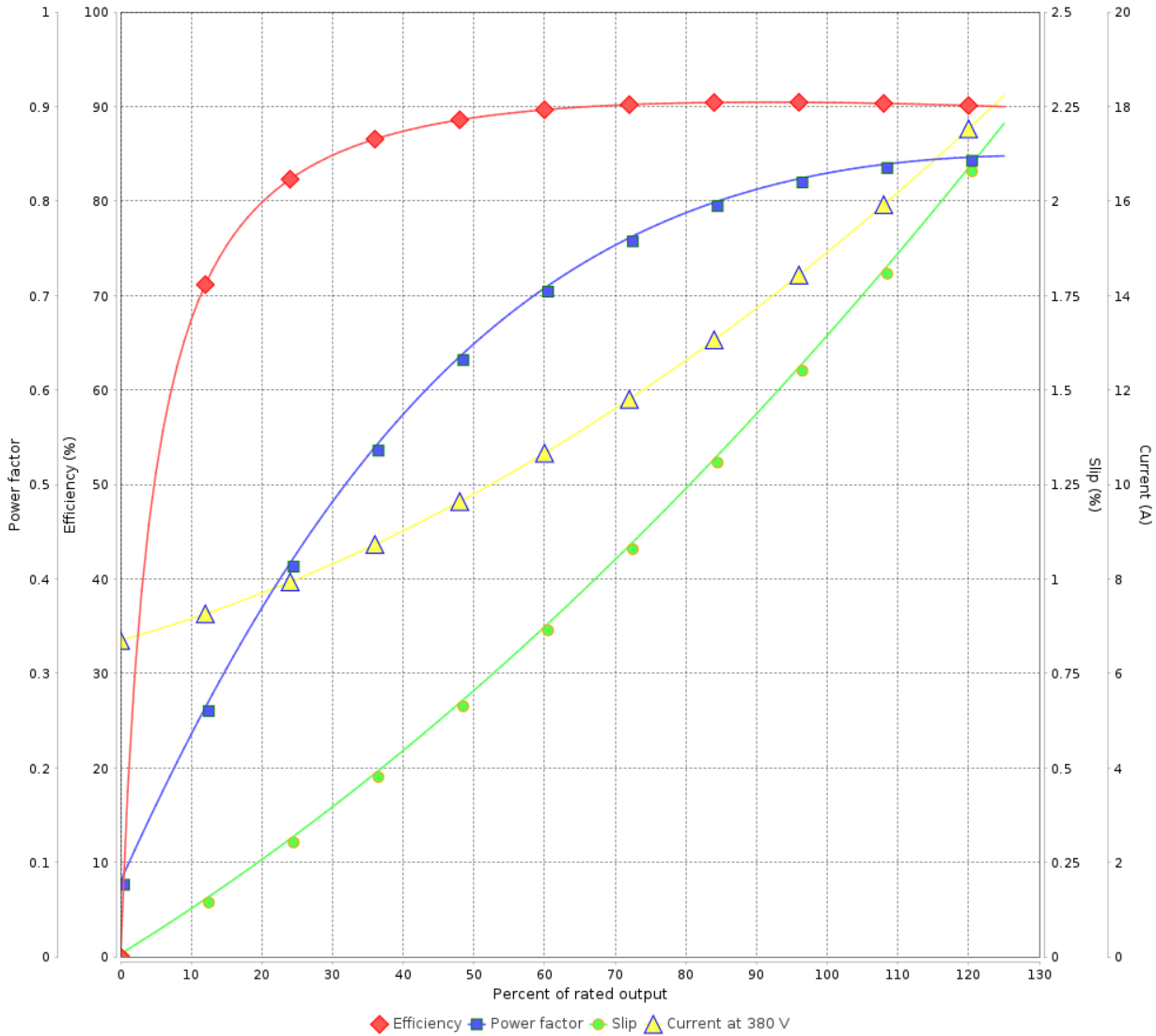
Three Phase Induction Motor - Squirrel Cage



Customer :

Product line : W22 Close Coupled Pump JP NEMA Premium Efficiency Three-Phase
 Product code : 12602496

LOAD PERFORMANCE CURVE



Performance : 380 V 50 Hz 4P IE3

Rated current	: 15.2 A	Moment of inertia (J)	: 0.1104 kgm ²
LRC	: 7.2	Duty cycle	: Cont.(S1)
Rated torque	: 4.92 kgfm	Insulation class	: F
Locked rotor torque	: 250 %	Service factor	: 1.25
Breakdown torque	: 300 %	Temperature rise	: 80 K
Rated speed	: 1475 rpm	Design	: B

Rev.	Changes Summary	Performed	Checked	Date
Performed by		Page		Revision
Checked by		4 / 9		
Date	24/10/2024			

LOAD PERFORMANCE CURVE

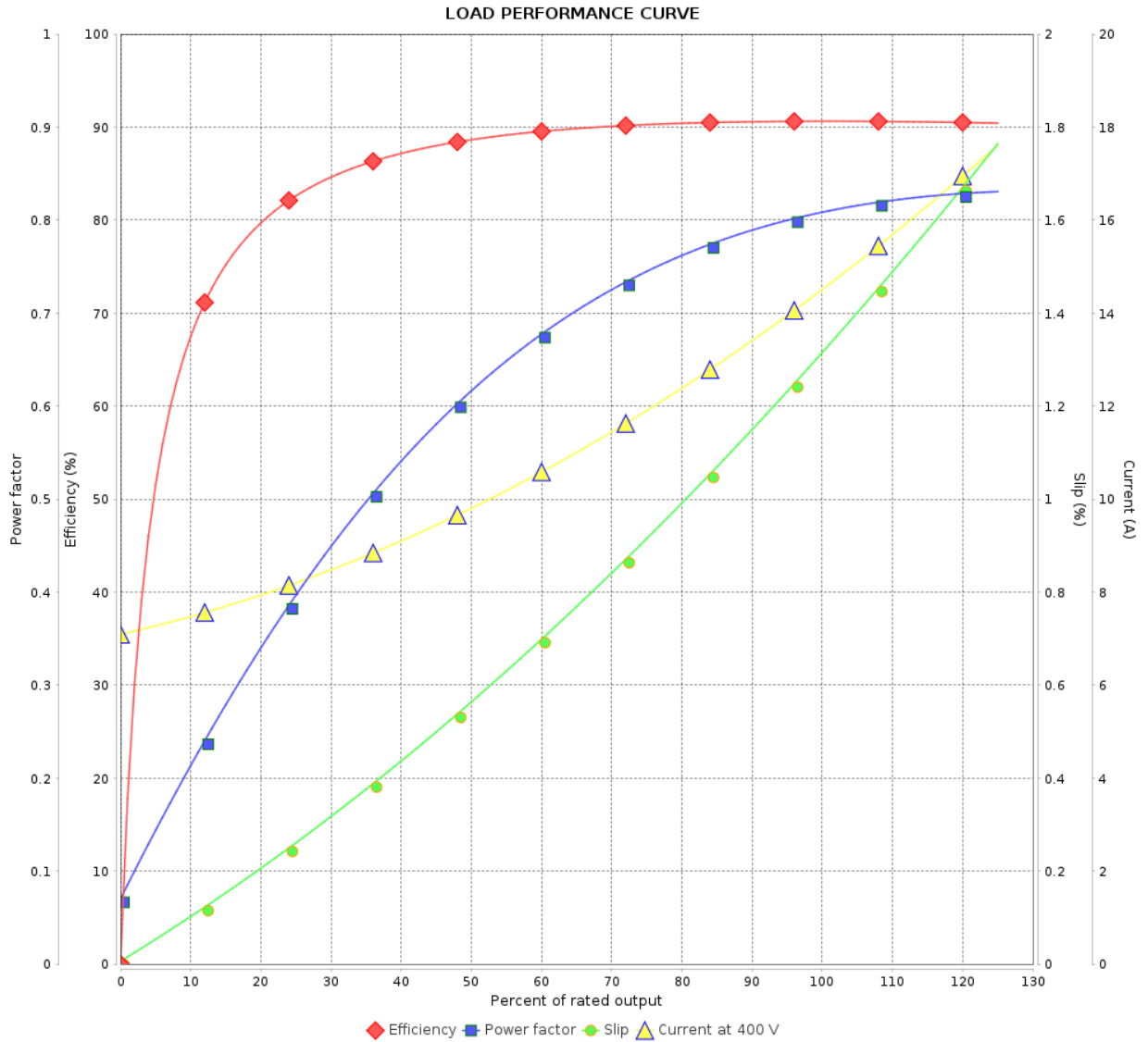
Three Phase Induction Motor - Squirrel Cage



Customer :

Product line : W22 Close Coupled Pump JP
NEMA Premium Efficiency Three-Phase

Product code : 12602496



Performance : 400 V 50 Hz 4P IE3

Rated current : 14.8 A
LRC : 7.8
Rated torque : 4.90 kgfm
Locked rotor torque : 280 %
Breakdown torque : 340 %
Rated speed : 1480 rpm

Moment of inertia (J) : 0.1104 kgm²
Duty cycle : Cont.(S1)
Insulation class : F
Service factor : 1.25
Temperature rise : 80 K
Design : B

Rev.	Changes Summary	Performed	Checked	Date
Performed by			Page	Revision
Checked by				
Date				

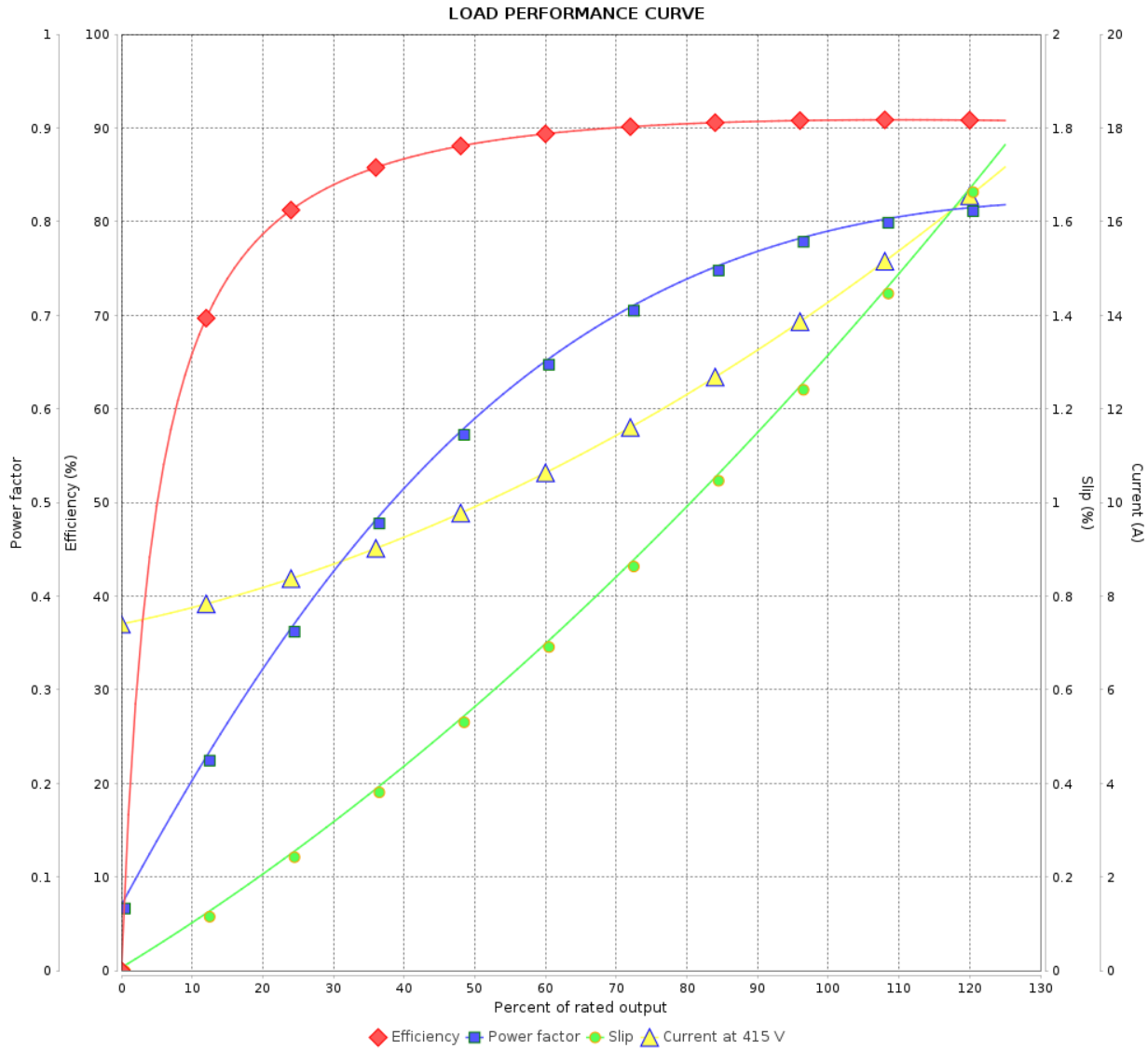
LOAD PERFORMANCE CURVE

Three Phase Induction Motor - Squirrel Cage



Customer :

Product line : W22 Close Coupled Pump JP
NEMA Premium Efficiency Three-Phase
Product code : 12602496



Performance : 415 V 50 Hz 4P IE3

Rated current	: 14.5 A	Moment of inertia (J)	: 0.1104 kgm ²
LRC	: 8.3	Duty cycle	: Cont.(S1)
Rated torque	: 4.90 kgfm	Insulation class	: F
Locked rotor torque	: 310 %	Service factor	: 1.25
Breakdown torque	: 370 %	Temperature rise	: 80 K
Rated speed	: 1480 rpm	Design	: B

Rev.	Changes Summary	Performed	Checked	Date
Performed by			Page	Revision
Checked by			6 / 9	
Date	24/10/2024			

LOAD PERFORMANCE CURVE

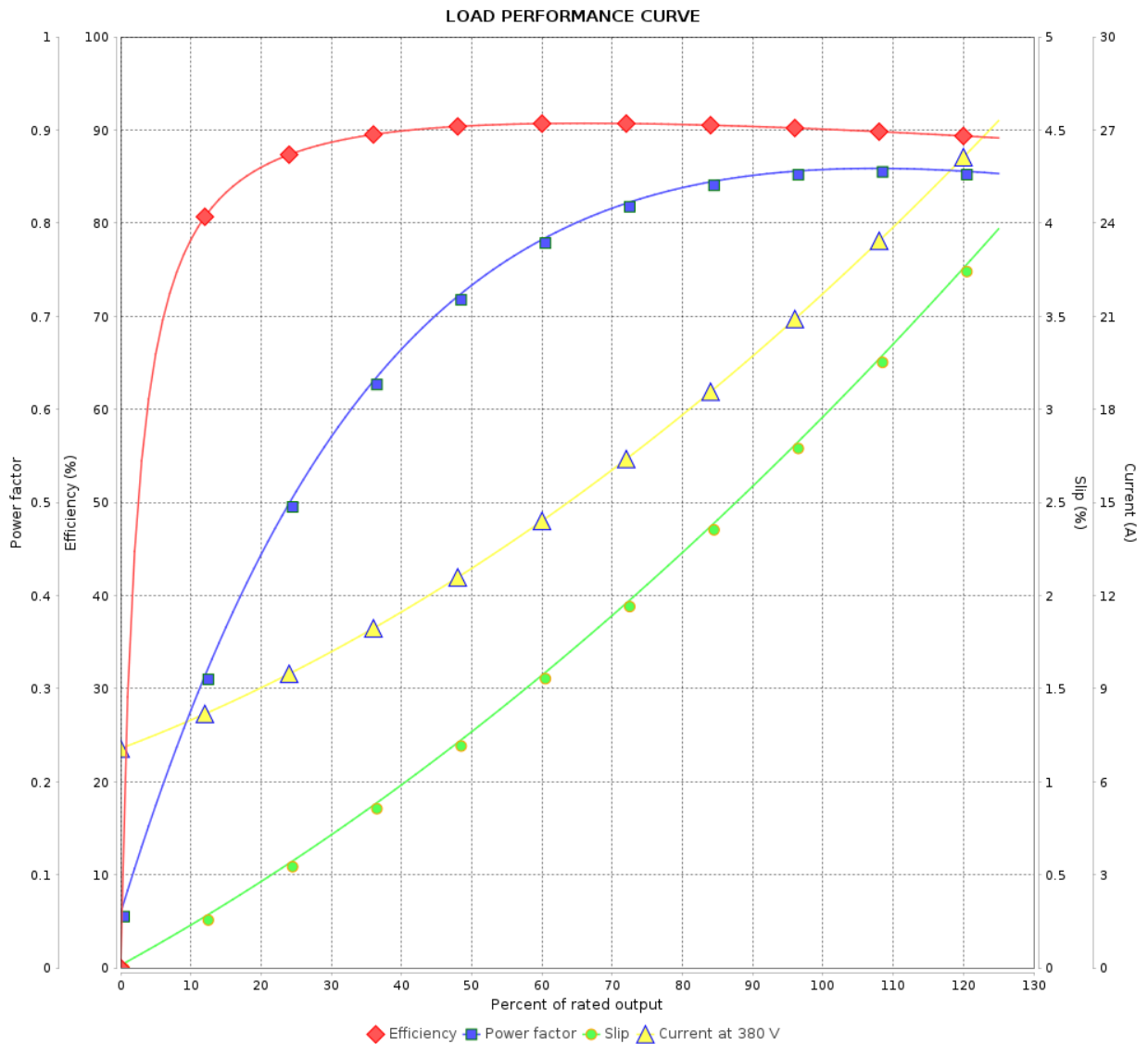
Three Phase Induction Motor - Squirrel Cage



Customer :

Product line : W22 Close Coupled Pump JP
NEMA Premium Efficiency Three-Phase

Product code : 12602496



Performance : 380 V 50 Hz 4P IE2

Rated current : 21.5 A
 LRC : 4.9
 Rated torque : 7.48 kgfm
 Locked rotor torque : 160 %
 Breakdown torque : 200 %
 Rated speed : 1455 rpm

Moment of inertia (J) : 0.1104 kgm²
 Duty cycle : Cont.(S1)
 Insulation class : F
 Service factor : 1.00
 Temperature rise : 80 K
 Design : B

Rev.	Changes Summary	Performed	Checked	Date
Performed by				
Checked by				
Date				
		Page	Revision	
		7 / 9		

LOAD PERFORMANCE CURVE

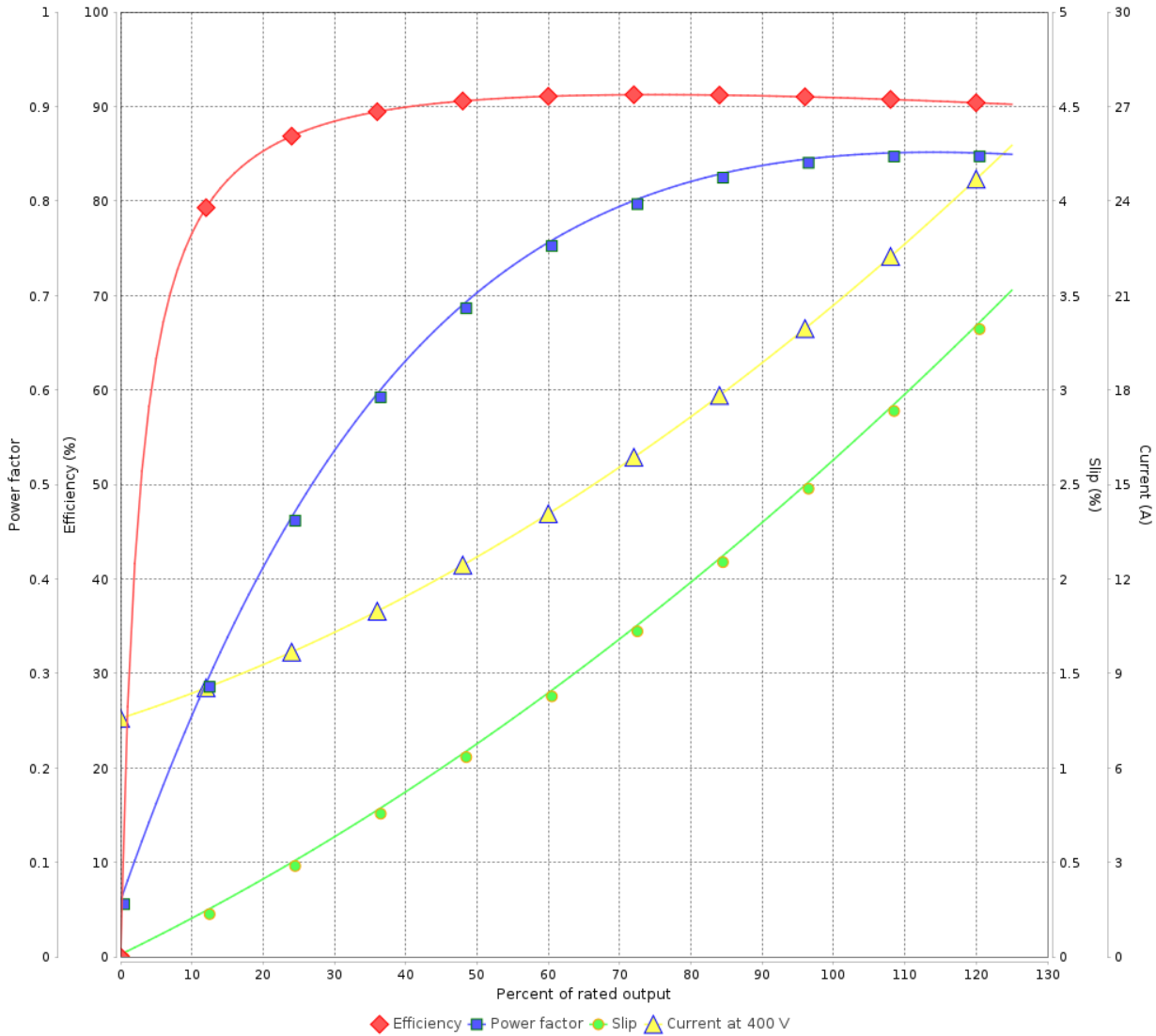
Three Phase Induction Motor - Squirrel Cage



Customer :

Product line : W22 Close Coupled Pump JP
 NEMA Premium Efficiency Three-Phase
 Product code : 12602496

LOAD PERFORMANCE CURVE



Performance : 400 V 50 Hz 4P IE2

Rated current	: 20.5 A	Moment of inertia (J)	: 0.1104 kgm ²
LRC	: 5.4	Duty cycle	: Cont.(S1)
Rated torque	: 7.46 kgfm	Insulation class	: F
Locked rotor torque	: 200 %	Service factor	: 1.00
Breakdown torque	: 220 %	Temperature rise	: 80 K
Rated speed	: 1460 rpm	Design	: B

Rev.	Changes Summary	Performed	Checked	Date
Performed by			Page	Revision
Checked by			8 / 9	
Date	24/10/2024			

LOAD PERFORMANCE CURVE

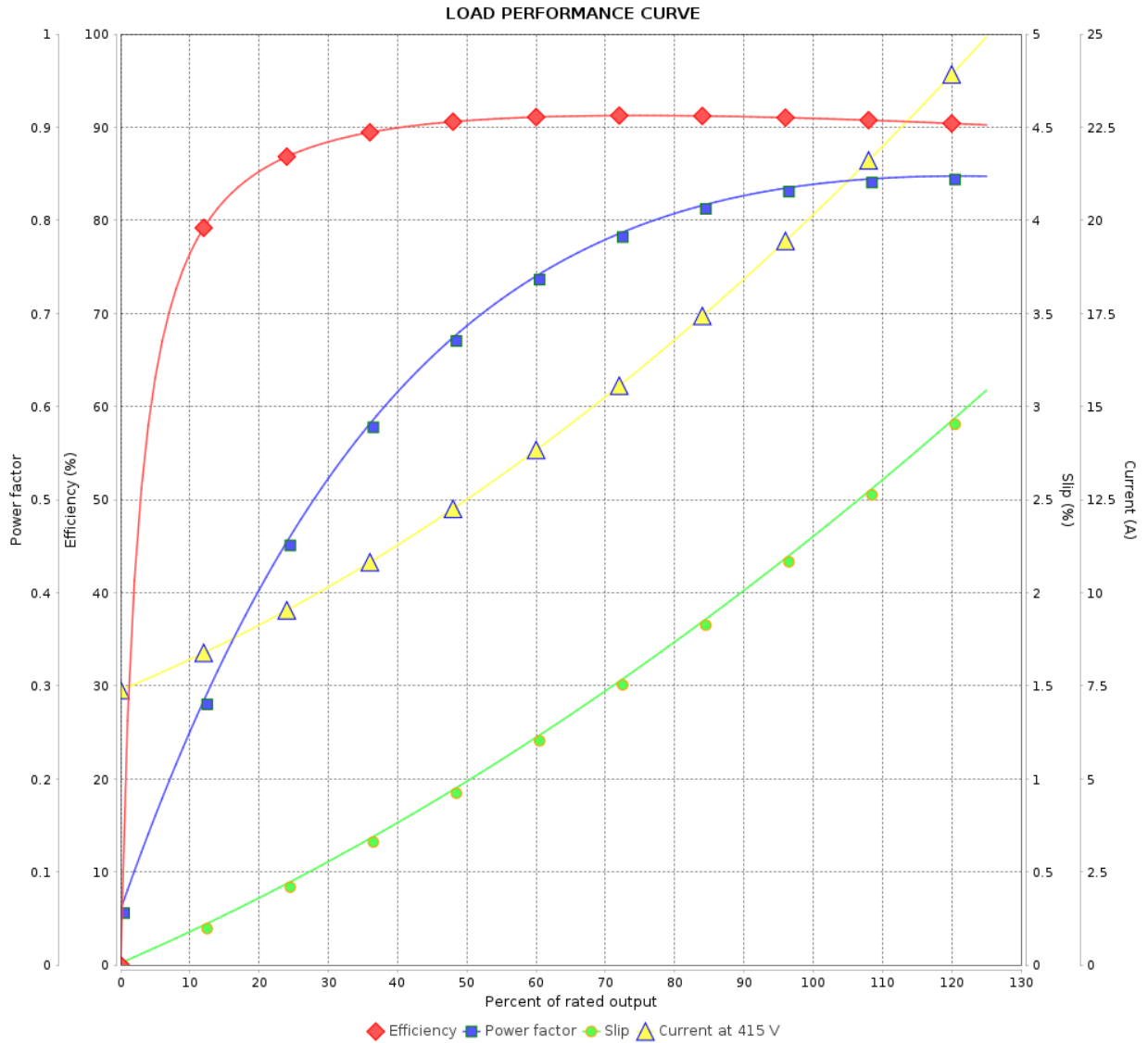
Three Phase Induction Motor - Squirrel Cage



Customer :

Product line : W22 Close Coupled Pump JP
NEMA Premium Efficiency Three-Phase

Product code : 12602496

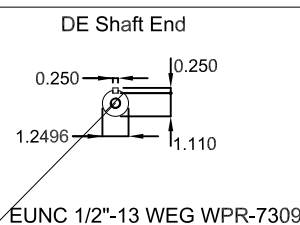
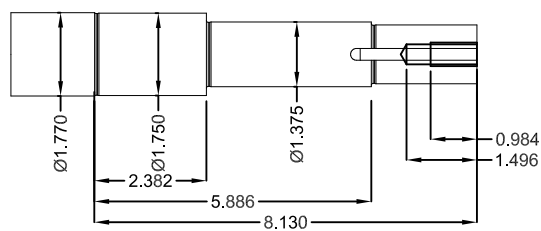
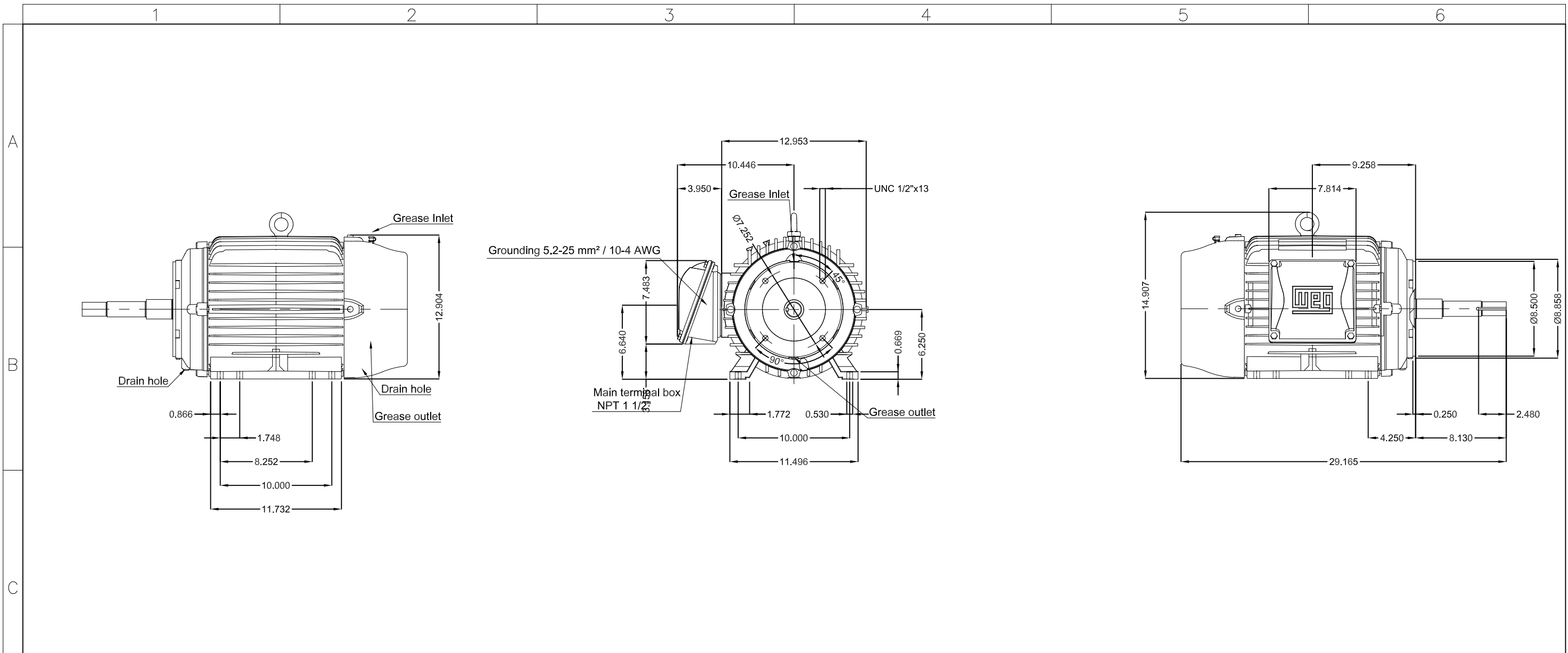


Performance : 415 V 50 Hz 4P IE2

Rated current : 20.0 A
LRC : 5.9
Rated torque : 7.43 kgfm
Locked rotor torque : 210 %
Breakdown torque : 240 %
Rated speed : 1465 rpm

Moment of inertia (J) : 0.1104 kgm²
Duty cycle : Cont.(S1)
Insulation class : F
Service factor : 1.00
Temperature rise : 80 K
Design : B

Rev.	Changes Summary	Performed	Checked	Date
Performed by			Page	Revision
Checked by				
Date				



EUNC 1/2"-13 WEG WPR-7309

15 HP 04 Poles 60 Hz A

ECM	LOC	SUMMARY OF MODIFICATIONS	EXECUTED	CHECKED	RELEASED	DATE	VER
EXECUTED	HYBRISUSER	THREE PH. MOTOR JM/JP/JET PUMP W22 NEMA PREM. EFF.					00
CHECKED		FRAME 254/6JP IP55 TEFC					
RELEASED							
REL. DATE							

Color RAL 5009
 Painting plan 203A
 Mounting NEMA F-1
 Mounting B34R(D)

WEG
 WDD 00
 SHEET /

Dimensions in inches