

# DATA SHEET



## Three Phase Induction Motor - Squirrel Cage

Customer :

Product line : W22 Close Coupled Pump JP Product code : 11603033  
 NEMA Premium Efficiency Three-Phase

|                       |                           |                             |                        |
|-----------------------|---------------------------|-----------------------------|------------------------|
| Frame                 | : 213/5JP                 | Locked rotor time           | : 30s (cold) 17s (hot) |
| Output                | : 10 HP (7.5 kW)          | Temperature rise            | : 80 K                 |
| Poles                 | : 4                       | Duty cycle                  | : Cont.(S1)            |
| Frequency             | : 60 Hz                   | Ambient temperature         | : -20°C to +40°C       |
| Rated voltage         | : 575 V                   | Altitude                    | : 1000 m.a.s.l.        |
| Rated current         | : 10.1 A                  | Protection degree           | : IP55                 |
| L. R. Amperes         | : 64.9 A                  | Cooling method              | : IC411 - TEFC         |
| LRC                   | : 6.4x(Code H)            | Mounting                    | : F-1                  |
| No load current       | : 4.52 A                  | Rotation <sup>1</sup>       | : Both (CW and CCW)    |
| Rated speed           | : 1765 rpm                | Noise level <sup>2</sup>    | : 58.0 dB(A)           |
| Slip                  | : 1.94 %                  | Starting method             | : Direct On Line       |
| Rated torque          | : 4.11 kgfm               | Approx. weight <sup>3</sup> | : 83.8 kg              |
| Locked rotor torque   | : 200 %                   |                             |                        |
| Breakdown torque      | : 295 %                   |                             |                        |
| Insulation class      | : F                       |                             |                        |
| Service factor        | : 1.25                    |                             |                        |
| Moment of inertia (J) | : 0.0636 kgm <sup>2</sup> |                             |                        |
| Design                | : B                       |                             |                        |

|                |      |      |      |                  |           |
|----------------|------|------|------|------------------|-----------|
| Output         | 50%  | 75%  | 100% | Foundation loads |           |
| Efficiency (%) | 91.0 | 91.7 | 91.7 | Max. traction    | : 182 kgf |
| Power Factor   | 0.65 | 0.76 | 0.81 | Max. compression | : 266 kgf |

Losses at normative operating points (speed;torque), in percentage of rated output power

| P1 (0,9;1,0) | P2 (0,5;1,0) | P3 (0,25;1,0) | P4 (0,9;0,5) | P5 (0,5;0,5) | P6 (0,5;0,25) | P7 (0,25;0,25) |
|--------------|--------------|---------------|--------------|--------------|---------------|----------------|
| 8.8          | 7.3          | 7.0           | 4.6          | 3.2          | 2.3           | 1.6            |

|                      |                    |                      |
|----------------------|--------------------|----------------------|
|                      | <u>Drive end</u>   | <u>Non drive end</u> |
| Bearing type         | : 6309 Z C3        | : 6207 ZZ            |
| Sealing              | : V'Ring           | : V'Ring             |
| Lubrication interval | : 20000 h          | : 40000 h            |
| Lubricant amount     | : 13 g             | : 0 g                |
| Lubricant type       | : Mobil Polyrex EM |                      |

Notes

This revision replaces and cancel the previous one, which must be eliminated.

- (1) Looking the motor from the shaft end.
- (2) Measured at 1m and with tolerance of +3dB(A).
- (3) Approximate weight subject to changes after manufacturing process.
- (4) At 100% of full load.

These are average values based on tests with sinusoidal power supply, subject to the tolerances stipulated in NEMA MG-1.

| Rev.         | Changes Summary | Performed | Checked | Date     |
|--------------|-----------------|-----------|---------|----------|
|              |                 |           |         |          |
| Performed by |                 |           | Page    | Revision |
| Checked by   |                 |           | 1 / 2   |          |
| Date         | 24/10/2024      |           |         |          |

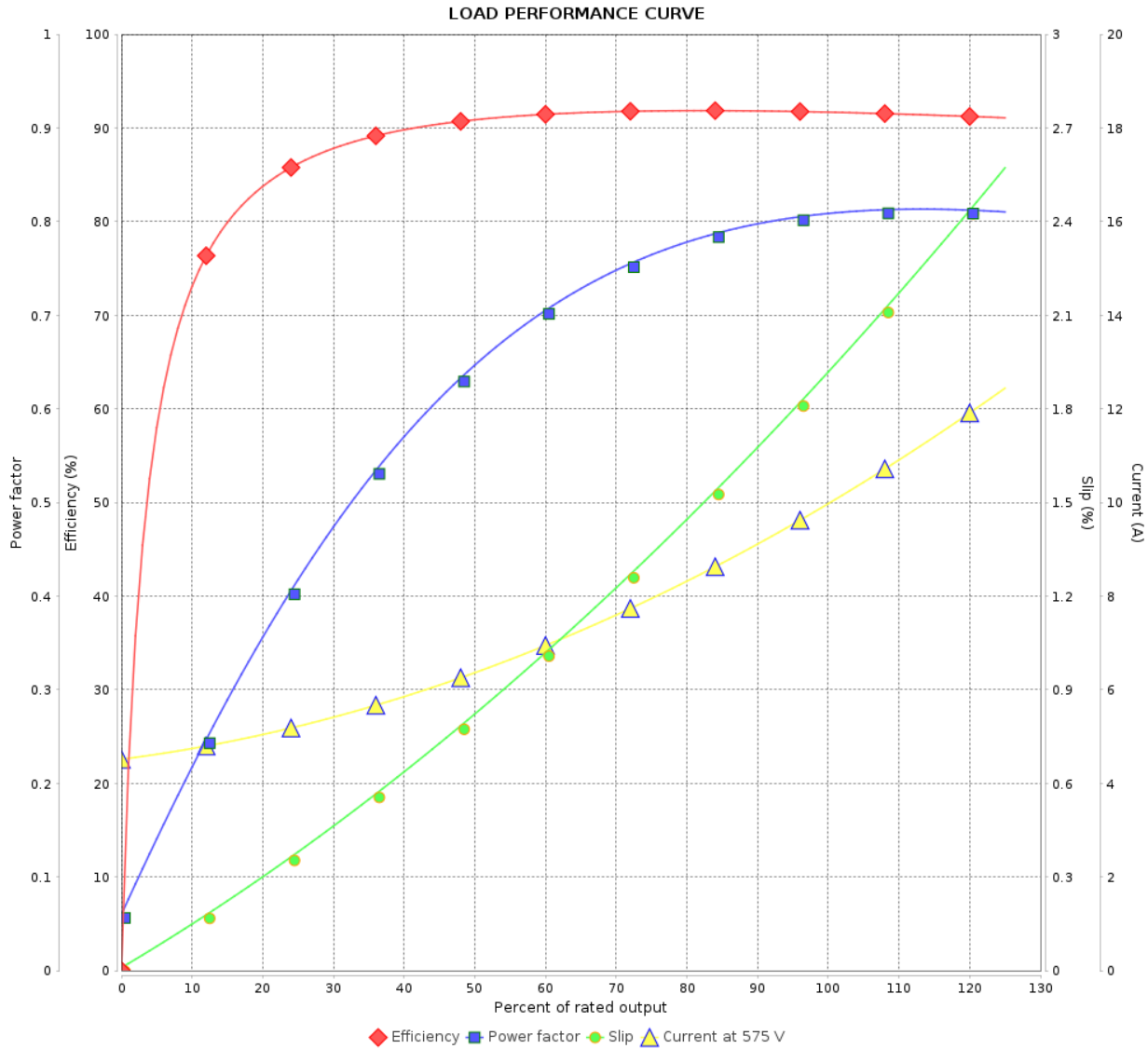
# LOAD PERFORMANCE CURVE

Three Phase Induction Motor - Squirrel Cage



Customer :

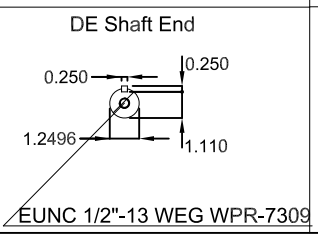
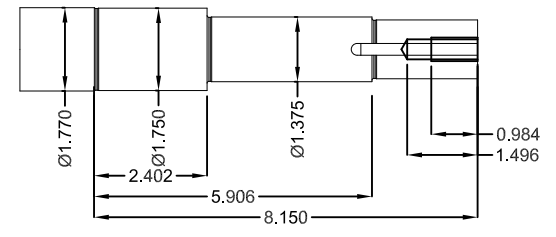
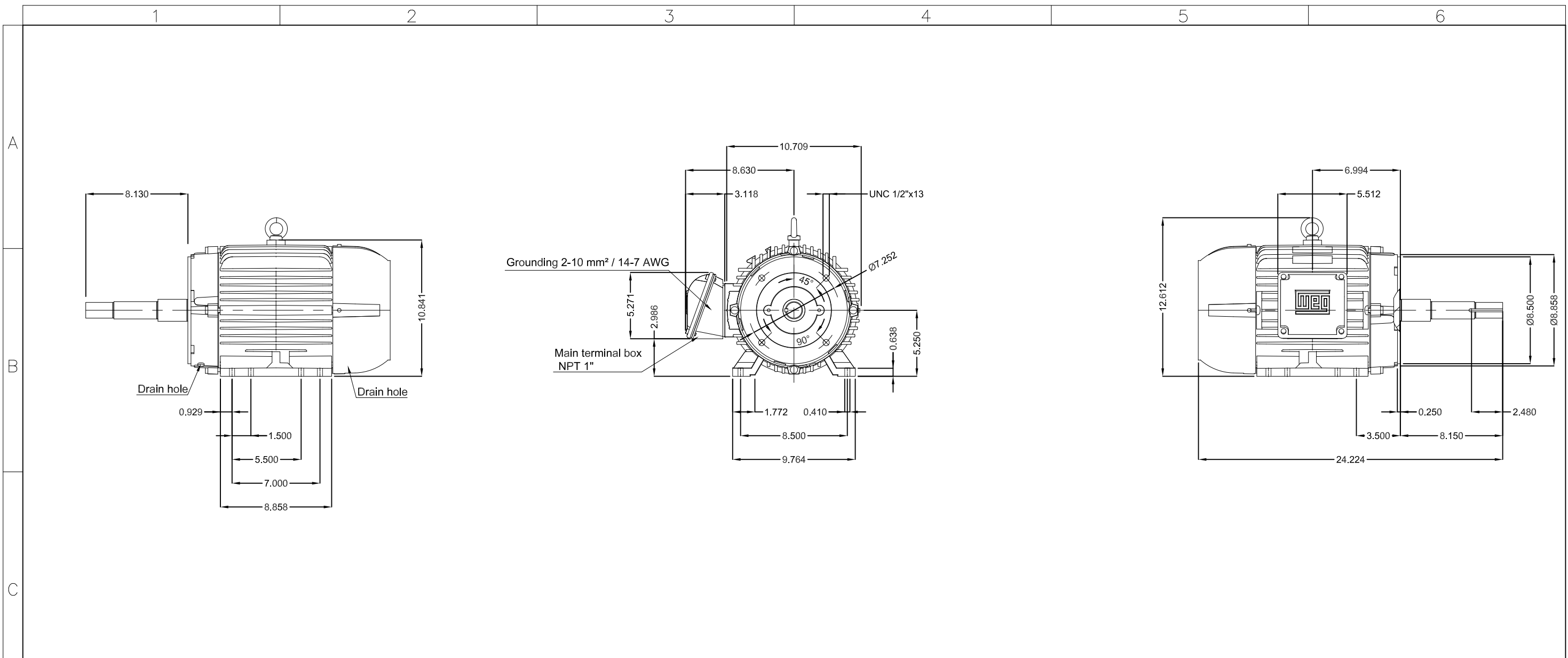
Product line : W22 Close Coupled Pump JP  
 NEMA Premium Efficiency Three-Phase  
 Product code : 11603033



Performance : 575 V 60 Hz 4P

|                     |             |                       |                           |
|---------------------|-------------|-----------------------|---------------------------|
| Rated current       | : 10.1 A    | Moment of inertia (J) | : 0.0636 kgm <sup>2</sup> |
| LRC                 | : 6.4       | Duty cycle            | : Cont.(S1)               |
| Rated torque        | : 4.11 kgfm | Insulation class      | : F                       |
| Locked rotor torque | : 200 %     | Service factor        | : 1.25                    |
| Breakdown torque    | : 295 %     | Temperature rise      | : 80 K                    |
| Rated speed         | : 1765 rpm  | Design                | : B                       |

| Rev.         | Changes Summary | Performed | Checked | Date     |
|--------------|-----------------|-----------|---------|----------|
|              |                 |           |         |          |
| Performed by |                 |           | Page    | Revision |
| Checked by   |                 |           | 2 / 2   |          |
| Date         | 24/10/2024      |           |         |          |



Color RAL 5009  
 Painting plan 207A  
 Mounting NEMA F-1  
 Mounting B34R(D)

EUNC 1/2"-13 WEG WPR-7309

|                      |            |  |  |  |  |   |          |         |          |      |     |
|----------------------|------------|--|--|--|--|---|----------|---------|----------|------|-----|
| 10 HP 04 Poles 60 Hz |            |  |  |  |  |   |          |         |          | A    |     |
| HYBRISUSER           |            |  |  |  |  |   |          |         |          | 00   |     |
| ECM                  | LOC        | SUMMARY OF MODIFICATIONS   |  |  |  |   | EXECUTED | CHECKED | RELEASED | DATE | VER |
| EXECUTED             | HYBRISUSER | THREE PH. MOTOR JM/JP/JET PUMP W22 NEMA PREM. EFF. FRAME 213/5JP IP55 TEFC |  |  |  |   | EXECUTED | CHECKED | RELEASED | DATE | VER |
| CHECKED              |            |  |  |  |  |   | EXECUTED | CHECKED | RELEASED | DATE | VER |
| RELEASED             |            |  |  |  |  |   | EXECUTED | CHECKED | RELEASED | DATE | VER |
| REL. DATE            |            |  |  |  |  |   | EXECUTED | CHECKED | RELEASED | DATE | VER |
|                      |            |  |  |  |  | <p>PREVIEW</p> <p>WDD 00</p> <p>SHEET /</p> |          |         |          |      |     |