

# DATA SHEET

## Three Phase Induction Motor - Squirrel Cage



Customer	:				
Product line	: Jet Pump - J type Standard Efficiency Three-Phase	Product code :	13905946		
Frame	: 56J	Cooling method	: IC01 - ODP		
Insulation class	: F	Mounting	: F-1		
Duty cycle	: Cont.(S1)	Rotation <sup>1</sup>	: CCW		
Ambient temperature	: -20°C to +40°C	Starting method	: Direct On Line		
Altitude	: 1000 m.a.s.l.	Approx. weight <sup>3</sup>	: 12.5 kg		
Design	: A	Moment of inertia (J)	: 0.0033 kgm <sup>2</sup>		
Output [HP]	2				
Poles	2				
Frequency [Hz]	60				
Rated voltage [V]	575				
Rated current [A]	2.26				
L. R. Amperes [A]	15.8				
LRC [A]	7.0x(Code J)				
No load current [A]	1.04				
Rated speed [RPM]	3470				
Slip [%]	3.61				
Rated torque [kgfm]	0.418				
Locked rotor torque [%]	229				
Breakdown torque [%]	250				
Service factor	1.20				
Temperature rise	80 K				
Locked rotor time	18s (cold) 10s (hot)				
Noise level <sup>2</sup>	62.0 dB(A)				
Efficiency (%)	25%				
	50%	77.0			
	75%	78.5			
	100%	78.5			
Power Factor	25%				
	50%	0.66			
	75%	0.79			
	100%	0.85			
Bearing type	: Drive end 6203 2RS	Non drive end 6202 2RS	Foundation loads		
Sealing	: Without Bearing Seal	Without Bearing Seal	Max. traction	: 27 kgf	
Lubrication interval	: -	-	Max. compression	: 40 kgf	
Lubricant amount	: -	-			
Lubricant type	: Mobil Polyrex EM				
Notes					
This revision replaces and cancel the previous one, which must be eliminated. (1) Looking the motor from the shaft end. (2) Measured at 1m and with tolerance of +3dB(A). (3) Approximate weight subject to changes after manufacturing process. (4) At 100% of full load.			These are average values based on tests with sinusoidal power supply, subject to the tolerances stipulated in NEMA MG-1.		
Rev.	Changes Summary		Performed	Checked	Date
Performed by					
Checked by				Page	Revision
Date	16/05/2022			1 / 2	

# LOAD PERFORMANCE CURVE

Three Phase Induction Motor - Squirrel Cage

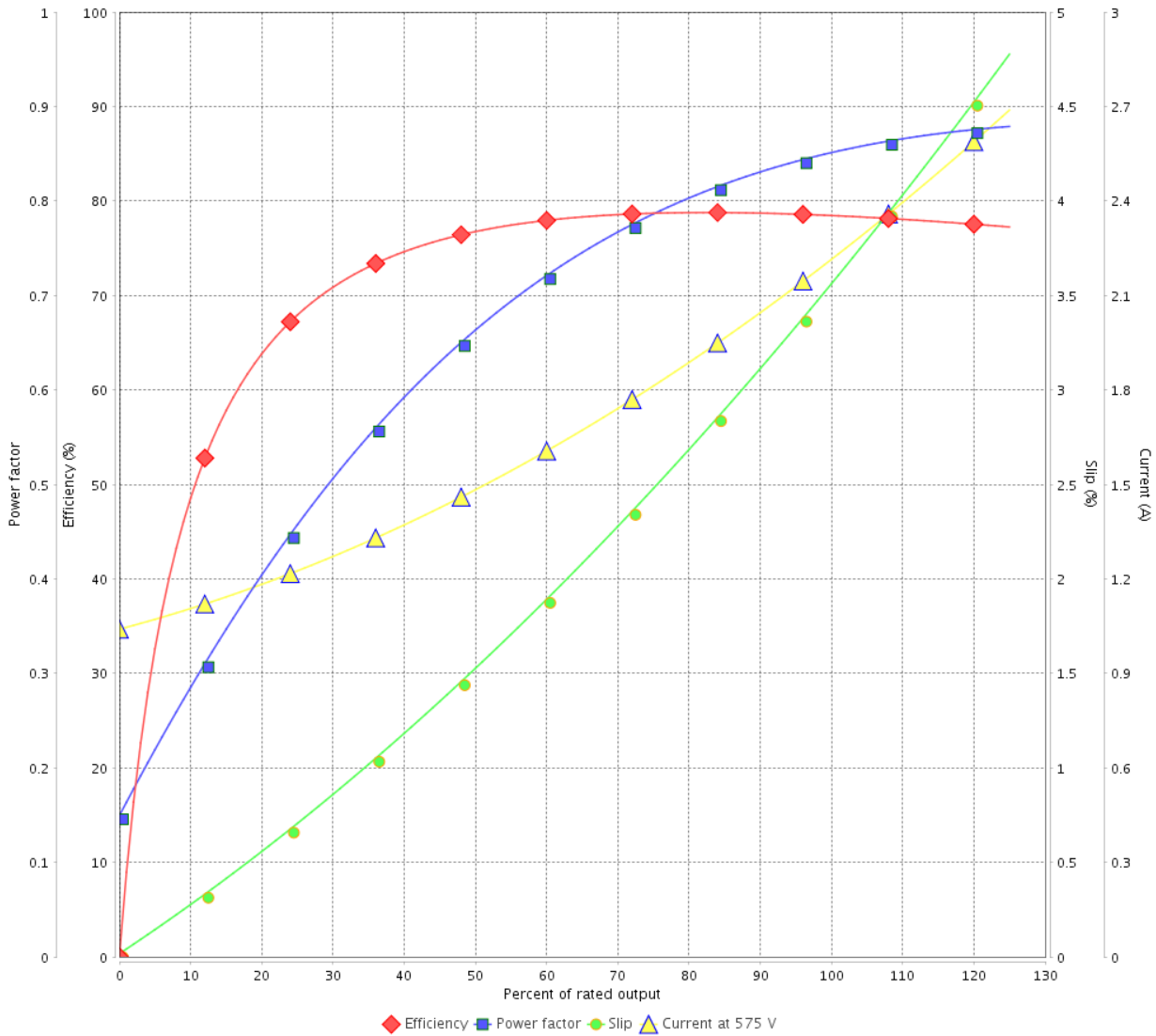


Customer : \_\_\_\_\_

Product line : Jet Pump - J type Standard  
Efficiency Three-Phase

Product code : 13905946

LOAD PERFORMANCE CURVE



Performance : 575 V 60 Hz 2P

Rated current : 2.26 A  
LRC : 7.0  
Rated torque : 0.418 kgfm  
Locked rotor torque : 229 %  
Breakdown torque : 250 %  
Rated speed : 3470 rpm

Moment of inertia (J) : 0.0033 kgm<sup>2</sup>  
Duty cycle : Cont.(S1)  
Insulation class : F  
Service factor : 1.20  
Temperature rise : 80 K  
Design : A

Rev.	Changes Summary	Performed	Checked	Date
Performed by			Page 2 / 2	Revision
Checked by				
Date	16/05/2022			

1 2 3 4 5 6

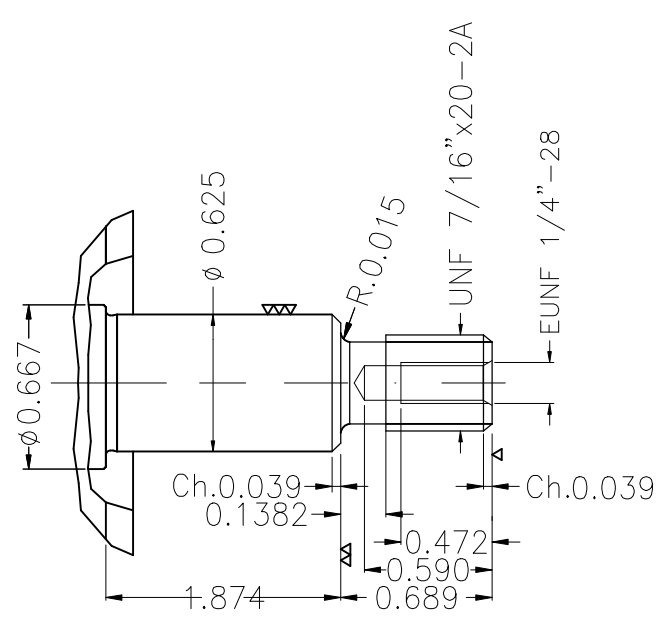
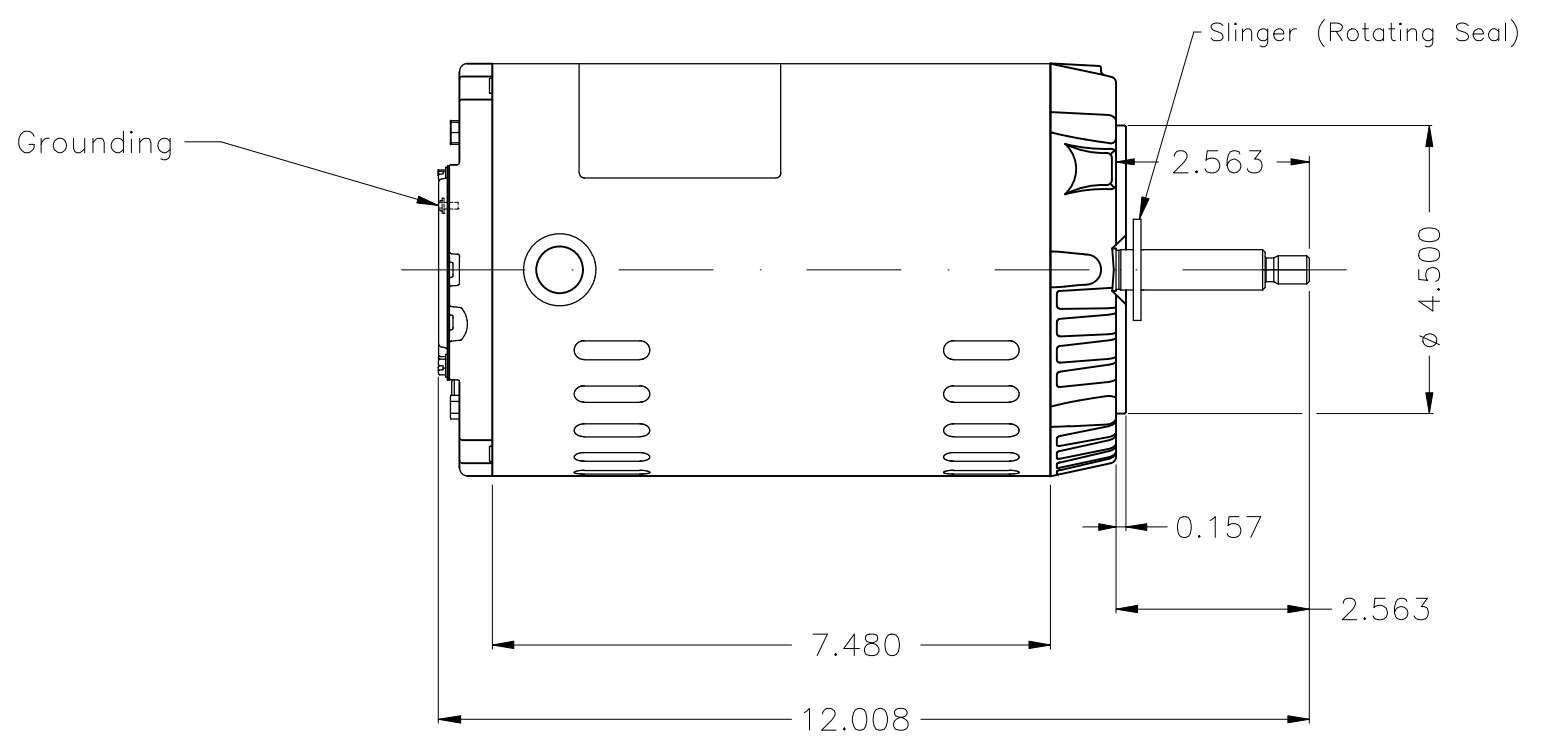
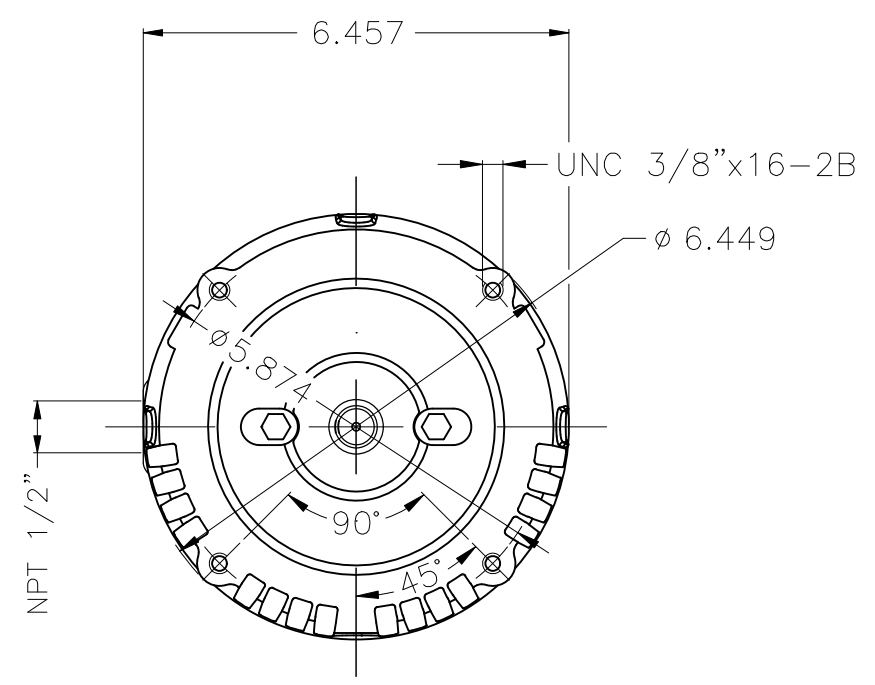
A

B

C

D

E



Color Munsell N 1 matte black  
 Painting plan 207N  
 Mounting F-1/B14R(D)

ECM	LOC	SUMMARY OF MODIFICATIONS	EXECUTED	CHECKED	RELEASED	DATE	VER
EXECUTED	HYBRISUSER	THREE PH. MOTOR ROLLED STEEL JET PUMP THREADED FRAME 56J IP21 ODP					00
CHECKED							
RELEASED							
REL. DATE	WMO	Jaragua do Sul	Product Engineering				

2 HP 02 Poles 60 Hz

A

PREVIEW  
 WDD | 00

