

DATA SHEET



Three Phase Induction Motor - Squirrel Cage

Customer :

Product line : W22 Close Coupled Pump JM Product code : 12102741
 NEMA Premium Efficiency Three-Phase

Frame	: 213/5JM	Locked rotor time	: 30s (cold) 17s (hot)
Output	: 10 HP (7.5 kW)	Temperature rise	: 80 K
Poles	: 4	Duty cycle	: Cont.(S1)
Frequency	: 60 Hz	Ambient temperature	: -20°C to +40°C
Rated voltage	: 575 V	Altitude	: 1000 m.a.s.l.
Rated current	: 10.1 A	Protection degree	: IP55
L. R. Amperes	: 64.9 A	Cooling method	: IC411 - TEFC
LRC	: 6.4x(Code H)	Mounting	: F-1
No load current	: 4.52 A	Rotation ¹	: Both (CW and CCW)
Rated speed	: 1765 rpm	Noise level ²	: 58.0 dB(A)
Slip	: 1.94 %	Starting method	: Direct On Line
Rated torque	: 4.11 kgfm	Approx. weight ³	: 82.4 kg
Locked rotor torque	: 200 %		
Breakdown torque	: 295 %		
Insulation class	: F		
Service factor	: 1.25		
Moment of inertia (J)	: 0.0636 kgm ²		
Design	: B		

Output	50%	75%	100%	Foundation loads	
Efficiency (%)	91.0	91.7	91.7	Max. traction	: 183 kgf
Power Factor	0.65	0.76	0.81	Max. compression	: 265 kgf

Losses at normative operating points (speed;torque), in percentage of rated output power

P1 (0,9;1,0)	P2 (0,5;1,0)	P3 (0,25;1,0)	P4 (0,9;0,5)	P5 (0,5;0,5)	P6 (0,5;0,25)	P7 (0,25;0,25)
8.8	7.3	7.0	4.6	3.2	2.3	1.6

		<u>Drive end</u>	<u>Non drive end</u>
Bearing type	:	6309 Z C3	6207 ZZ
Sealing	:	V'Ring	V'Ring
Lubrication interval	:	20000 h	40000 h
Lubricant amount	:	13 g	0 g
Lubricant type	:	Mobil Polyrex EM	

Notes

This revision replaces and cancel the previous one, which must be eliminated.

- (1) Looking the motor from the shaft end.
- (2) Measured at 1m and with tolerance of +3dB(A).
- (3) Approximate weight subject to changes after manufacturing process.
- (4) At 100% of full load.

These are average values based on tests with sinusoidal power supply, subject to the tolerances stipulated in NEMA MG-1.

Rev.	Changes Summary	Performed	Checked	Date
Performed by		Page		Revision
Checked by		1 / 2		
Date	23/10/2024			

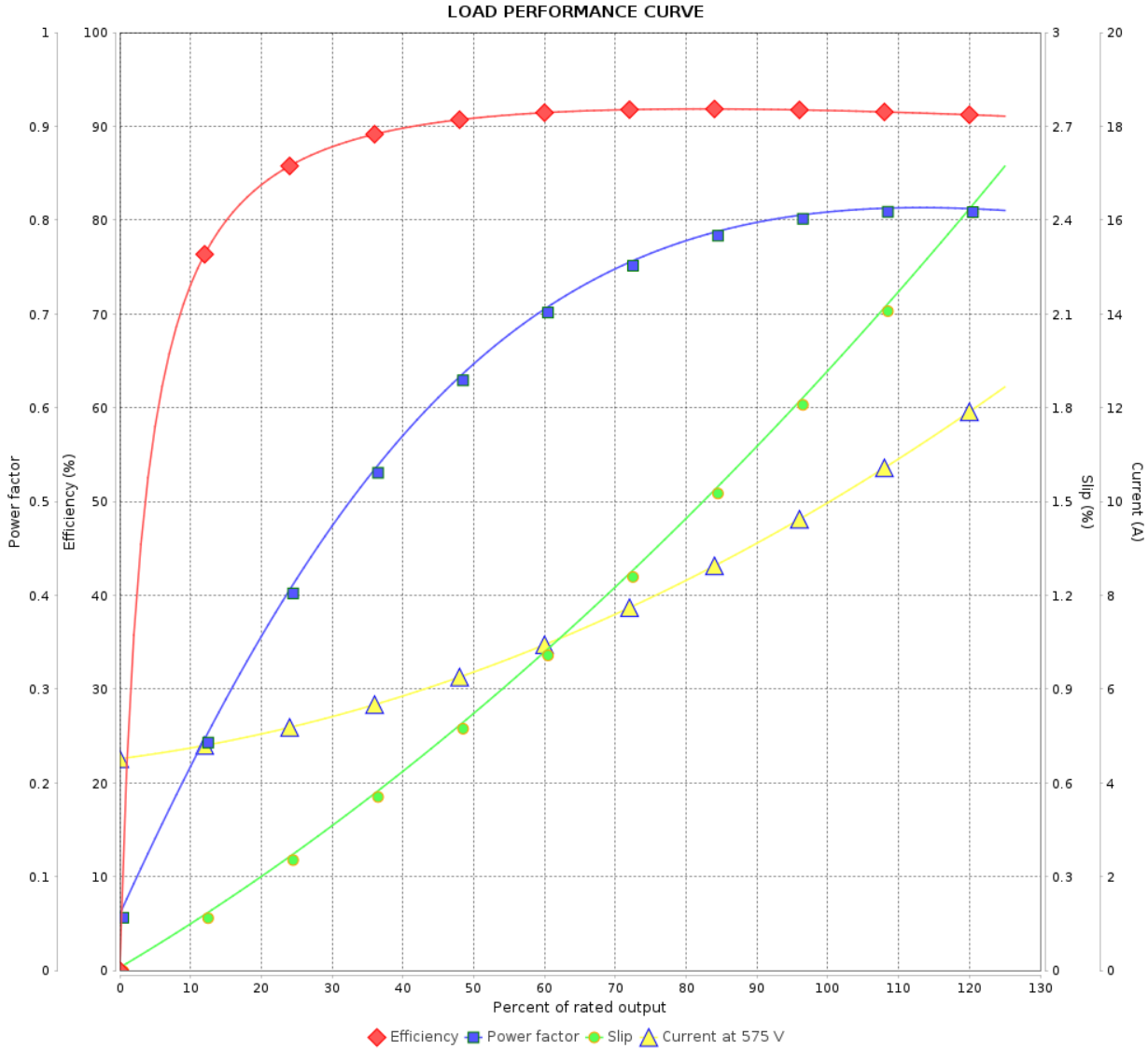
LOAD PERFORMANCE CURVE

Three Phase Induction Motor - Squirrel Cage



Customer :

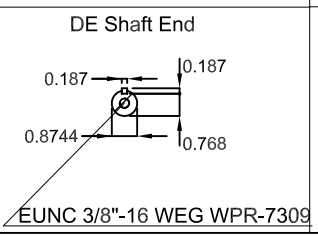
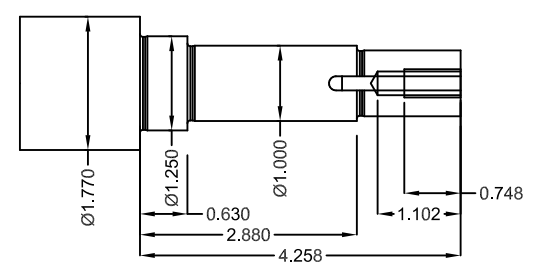
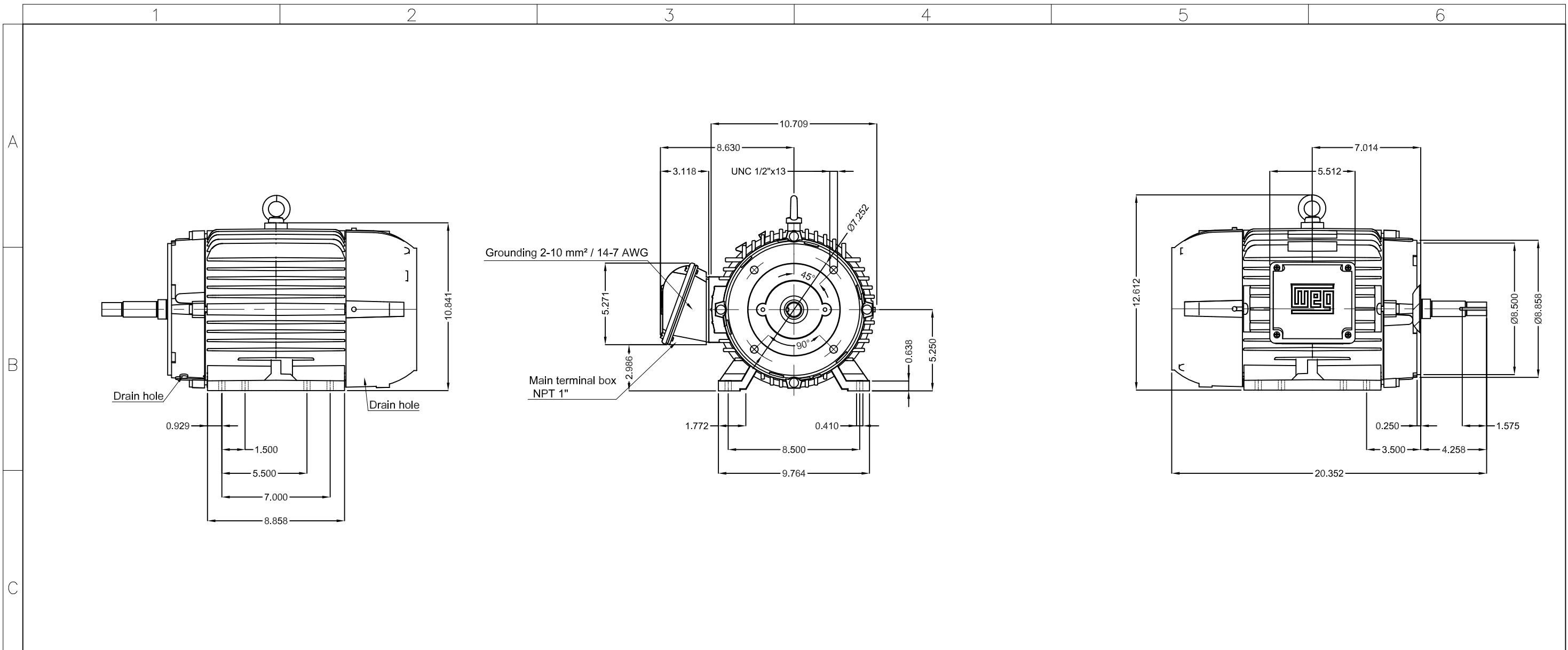
Product line : W22 Close Coupled Pump JM
 NEMA Premium Efficiency Three-Phase
 Product code : 12102741



Performance : 575 V 60 Hz 4P

Rated current	: 10.1 A	Moment of inertia (J)	: 0.0636 kgm ²
LRC	: 6.4	Duty cycle	: Cont.(S1)
Rated torque	: 4.11 kgfm	Insulation class	: F
Locked rotor torque	: 200 %	Service factor	: 1.25
Breakdown torque	: 295 %	Temperature rise	: 80 K
Rated speed	: 1765 rpm	Design	: B

Rev.	Changes Summary	Performed	Checked	Date
Performed by			Page	Revision
Checked by			2 / 2	
Date	23/10/2024			



Color RAL 5009
 Painting plan 207A
 Mounting B34R(D)

10 HP 04 Poles 60 Hz										A		
ECM	LOC	SUMMARY OF MODIFICATIONS					HYBRISUSER	EXECUTED	CHECKED	RELEASED	DATE	VER
EXECUTED	HYBRISUSER	THREE PH. MOTOR JM/JP/JET PUMP W22 NEMA PREM. EFF. FRAME 213/5JM IP55 TEFC					EXECUTED					00
CHECKED												
RELEASED												
REL. DATE												
						PREVIEW WDD 00 SHEET /						