

# DATA SHEET



## Three Phase Induction Motor - Squirrel Cage

Customer	:			
Product line	: JM Pump NEMA Premium Efficiency Three-Phase	Product code :	13401475	
Frame	: 213/5JM	Cooling method	: IC411 - TEFC	
Insulation class	: F	Mounting	: F-1	
Duty cycle	: Cont.(S1)	Rotation <sup>1</sup>	: Both (CW and CCW)	
Ambient temperature	: -20°C to +40°C	Starting method	: Direct On Line	
Altitude	: 1000 m.a.s.l.	Approx. weight <sup>3</sup>	: 64.4 kg	
Protection degree	: IP55	Moment of inertia (J)	: 0.0451 kgm <sup>2</sup>	
Design	: B			
Output [HP]	10			
Poles	4			
Frequency [Hz]	60			
Rated voltage [V]	575			
Rated current [A]	9.76			
L. R. Amperes [A]	68.3			
LRC [A]	7.0x(Code H)			
No load current [A]	4.43			
Rated speed [RPM]	1760			
Slip [%]	2.22			
Rated torque [kgfm]	4.12			
Locked rotor torque [%]	250			
Breakdown torque [%]	300			
Service factor	1.15			
Temperature rise	80 K			
Locked rotor time	27s (cold) 15s (hot)			
Noise level <sup>2</sup>	60.0 dB(A)			
Efficiency (%)	25%	90.2		
	50%	91.0		
	75%	91.0		
	100%	91.7		
Power Factor	25%	0.41		
	50%	0.67		
	75%	0.78		
	100%	0.84		
Bearing type	: <u>Drive end</u> 6209 ZZ	<u>Non drive end</u> 6206 ZZ	Foundation loads	
Sealing	: V'Ring	V'Ring	Max. traction	: 196 kgf
Lubrication interval	: -	-	Max. compression	: 261 kgf
Lubricant amount	: -	-		
Lubricant type	: Mobil Polyrex EM			
Notes				
This revision replaces and cancel the previous one, which must be eliminated. (1) Looking the motor from the shaft end. (2) Measured at 1m and with tolerance of +3dB(A). (3) Approximate weight subject to changes after manufacturing process. (4) At 100% of full load.		These are average values based on tests with sinusoidal power supply, subject to the tolerances stipulated in NEMA MG-1.		
Rev.	Changes Summary		Performed	Checked
Performed by			Page	Revision
Checked by				
Date	16/05/2022		1 / 2	

# LOAD PERFORMANCE CURVE

Three Phase Induction Motor - Squirrel Cage

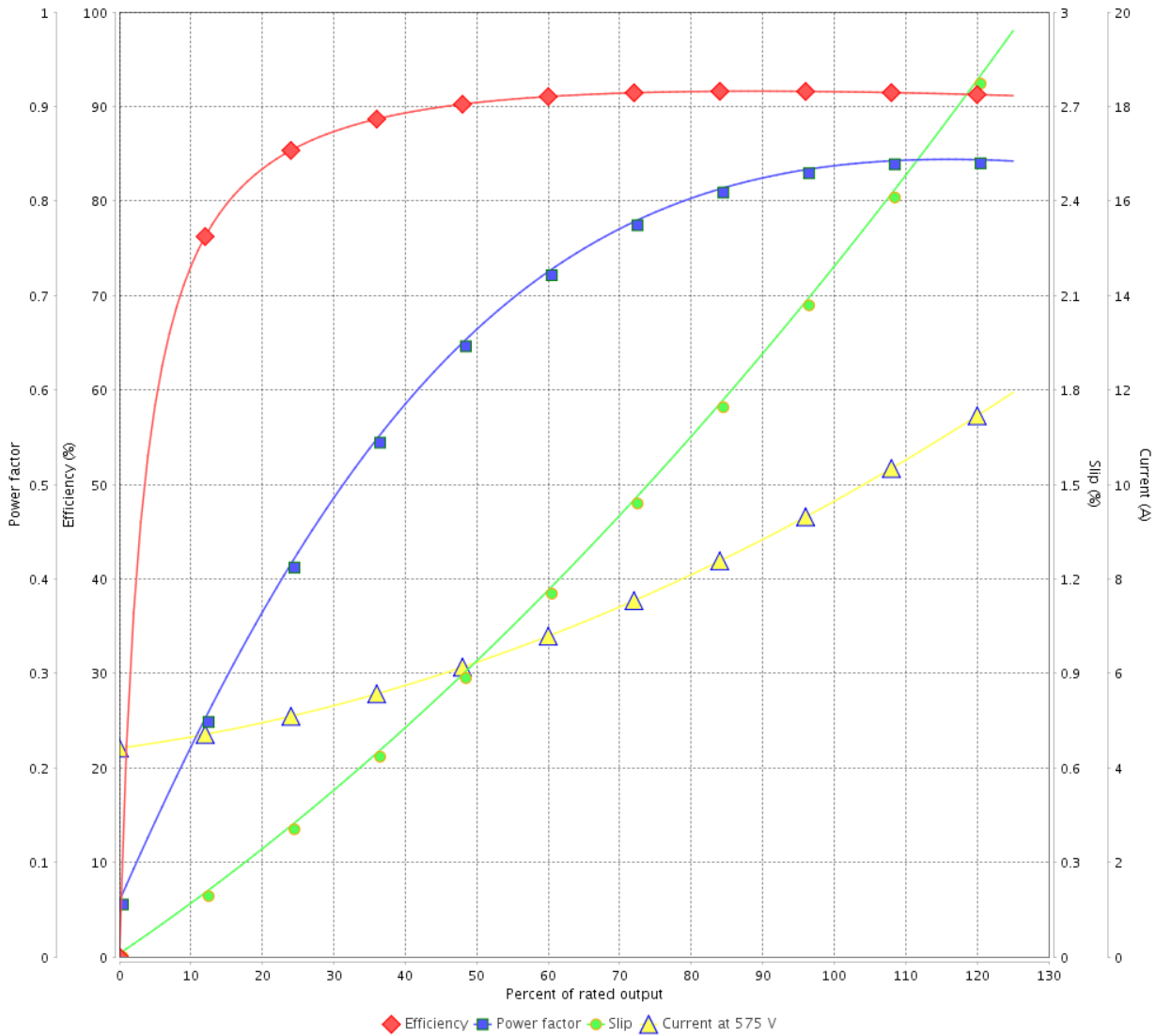


Customer :

Product line : JM Pump NEMA Premium  
Efficiency Three-Phase

Product code : 13401475

LOAD PERFORMANCE CURVE



Performance : 575 V 60 Hz 4P

Rated current : 9.76 A  
LRC : 7.0  
Rated torque : 4.12 kgfm  
Locked rotor torque : 250 %  
Breakdown torque : 300 %  
Rated speed : 1760 rpm

Moment of inertia (J) : 0.0451 kgm<sup>2</sup>  
Duty cycle : Cont.(S1)  
Insulation class : F  
Service factor : 1.15  
Temperature rise : 80 K  
Design : B

Rev.	Changes Summary	Performed	Checked	Date
Performed by			Page	Revision
Checked by				
Date				

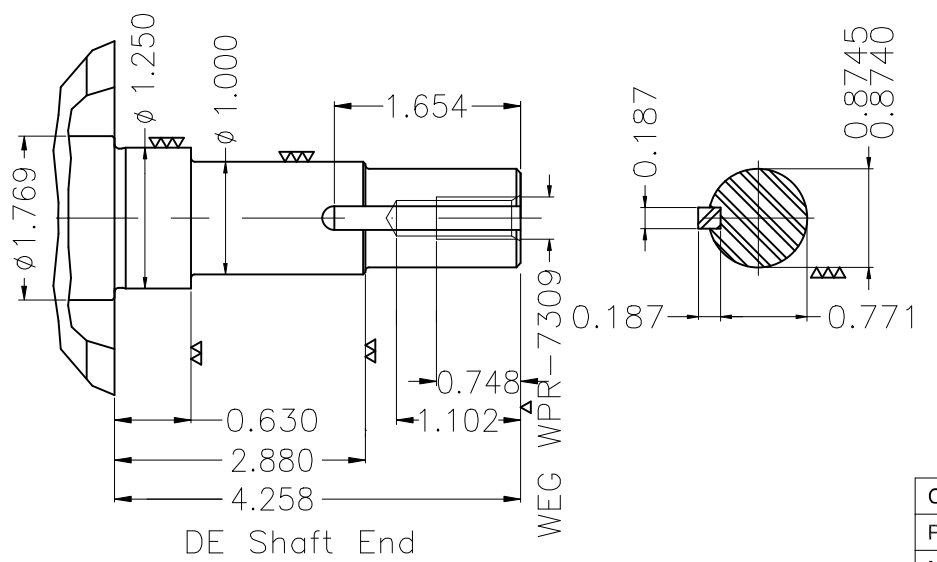
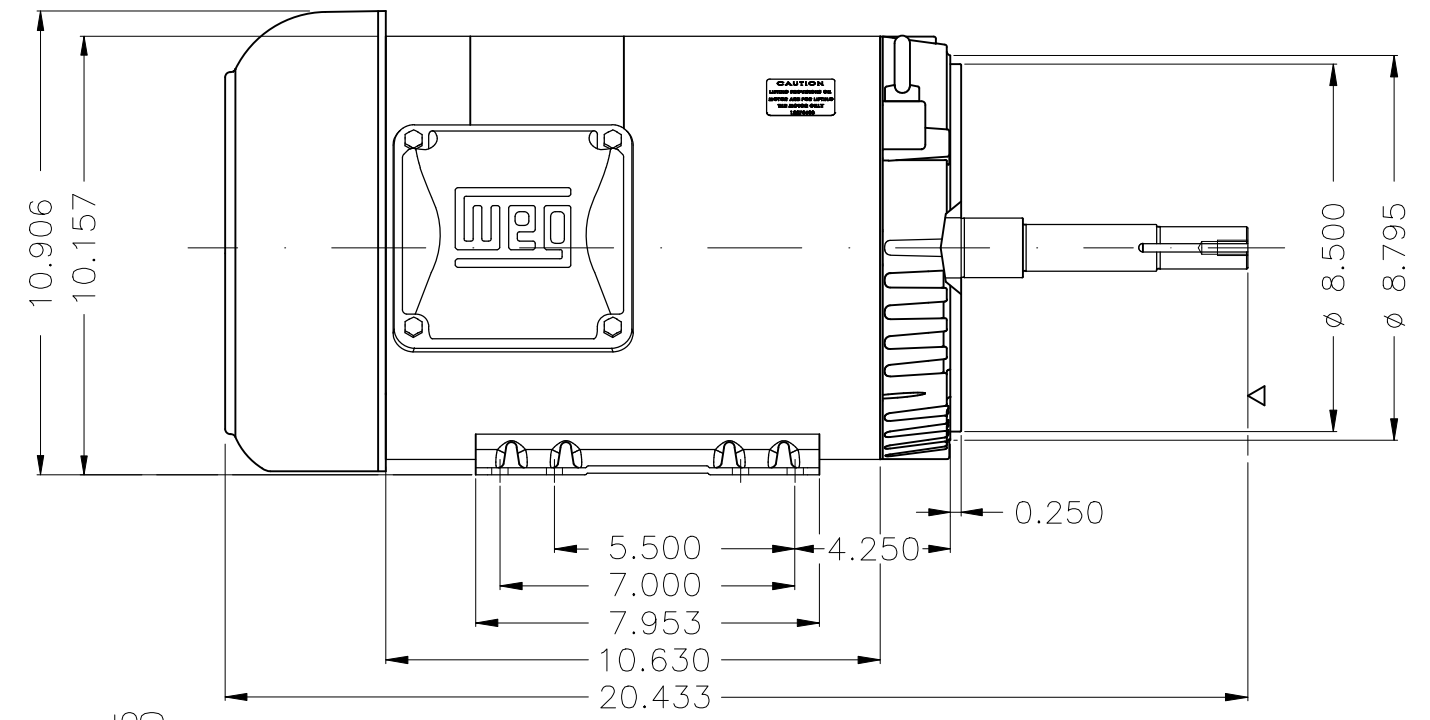
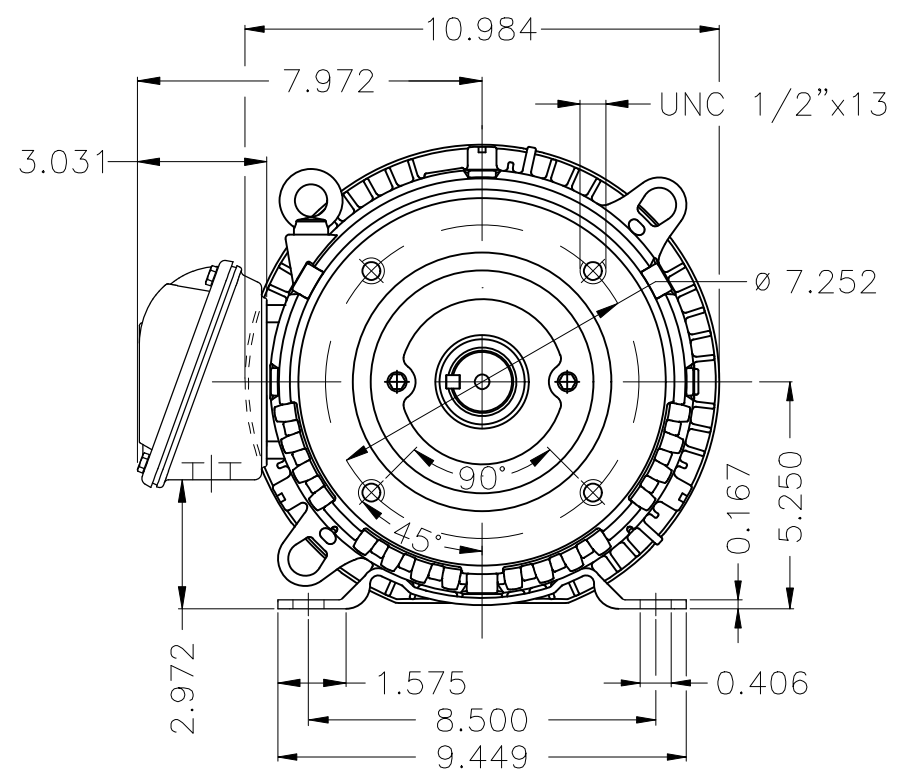
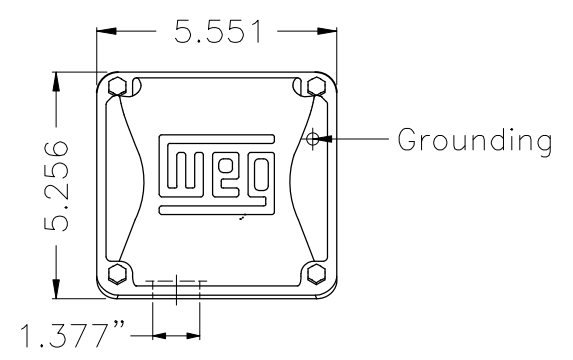
A

B

C

D

E



EUNC 3/8"-16 WEG WPR-7309

DE Shaft End

Color Munsell N 1 matte black  
 Painting plan 207N  
 Mounting B34D

ECM		LOC	SUMMARY OF MODIFICATIONS				HYBRISUSER			00
EXECUTED	CHECKED	RELEASED	EXECUTED	CHECKED	RELEASED	DATE	VER			
EXECUTED	HYBRISUSER		THREE PH. MOTOR ROLLED STEEL JM NEMA PREM. EFF.					PREVIEW		
CHECKED			FRAME 213/5JM IP55 TEFC					WDD   00		
RELEASED								SHEET 1 / 1		
REL. DATE		WMO	Jaragua do Sul	Product Engineering						

10 HP 04 Poles 60 Hz

A

