

DATA SHEET

Three Phase Induction Motor - Squirrel Cage



Customer : _____

Product line : Close Coupled Pump NEMA Premium Efficiency Three-Phase Product code : 11168018

Frame	: 213/5JM	Locked rotor time	: 10s (cold) 6s (hot)
Output	: 10 HP (7.5 kW)	Temperature rise	: 105 K
Poles	: 4	Duty cycle	: Cont.(S1)
Frequency	: 60 Hz	Ambient temperature	: -20°C to +40°C
Rated voltage	: 575 V	Altitude	: 1000 m.a.s.l.
Rated current	: 9.90 A	Protection degree	: IP21
L. R. Amperes	: 64.3 A	Cooling method	: IC01 - ODP
LRC	: 6.5x(Code H)	Mounting	: F-1
No load current	: 4.36 A	Rotation ¹	: Both (CW and CCW)
Rated speed	: 1765 rpm	Noise level ²	: 59.0 dB(A)
Slip	: 1.94 %	Starting method	: Direct On Line
Rated torque	: 4.11 kgfm	Approx. weight ³	: 57.1 kg
Locked rotor torque	: 210 %		
Breakdown torque	: 290 %		
Insulation class	: F		
Service factor	: 1.15		
Moment of inertia (J)	: 0.0504 kgm ²		
Design	: B		

Output	50%	75%	100%	Foundation loads	
Efficiency (%)	90.2	91.0	91.7	Max. traction	: 192 kgf
Power Factor	0.64	0.76	0.83	Max. compression	: 249 kgf

	Drive end	Non drive end
Bearing type	: 6209 ZZ	: 6206 ZZ
Sealing	: Without Bearing Seal	: Without Bearing Seal
Lubrication interval	: -	: -
Lubricant amount	: -	: -
Lubricant type	: Mobil Polyrex EM	

Notes

This revision replaces and cancel the previous one, which must be eliminated.
 (1) Looking the motor from the shaft end.
 (2) Measured at 1m and with tolerance of +3dB(A).
 (3) Approximate weight subject to changes after manufacturing process.
 (4) At 100% of full load.

These are average values based on tests with sinusoidal power supply, subject to the tolerances stipulated in NEMA MG-1.

Rev.	Changes Summary	Performed	Checked	Date
Performed by				
Checked by			Page	Revision
Date	23/10/2024		1 / 2	

LOAD PERFORMANCE CURVE

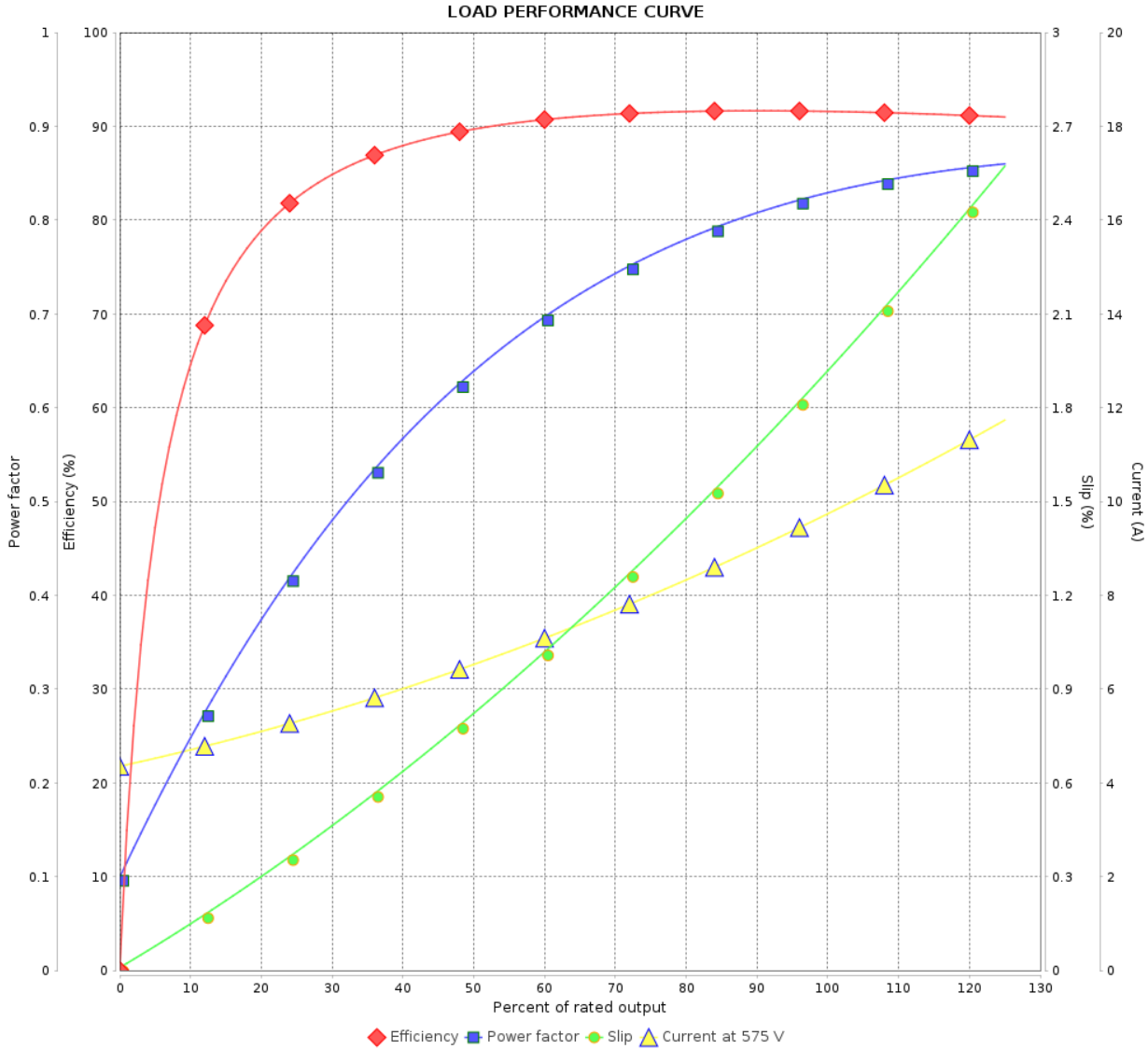
Three Phase Induction Motor - Squirrel Cage



Customer :

Product line : Close Coupled Pump NEMA
Premium Efficiency Three-Phase

Product code : 11168018

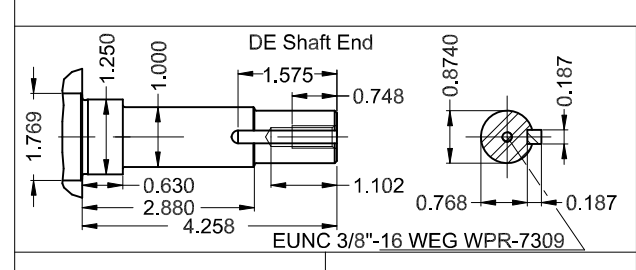
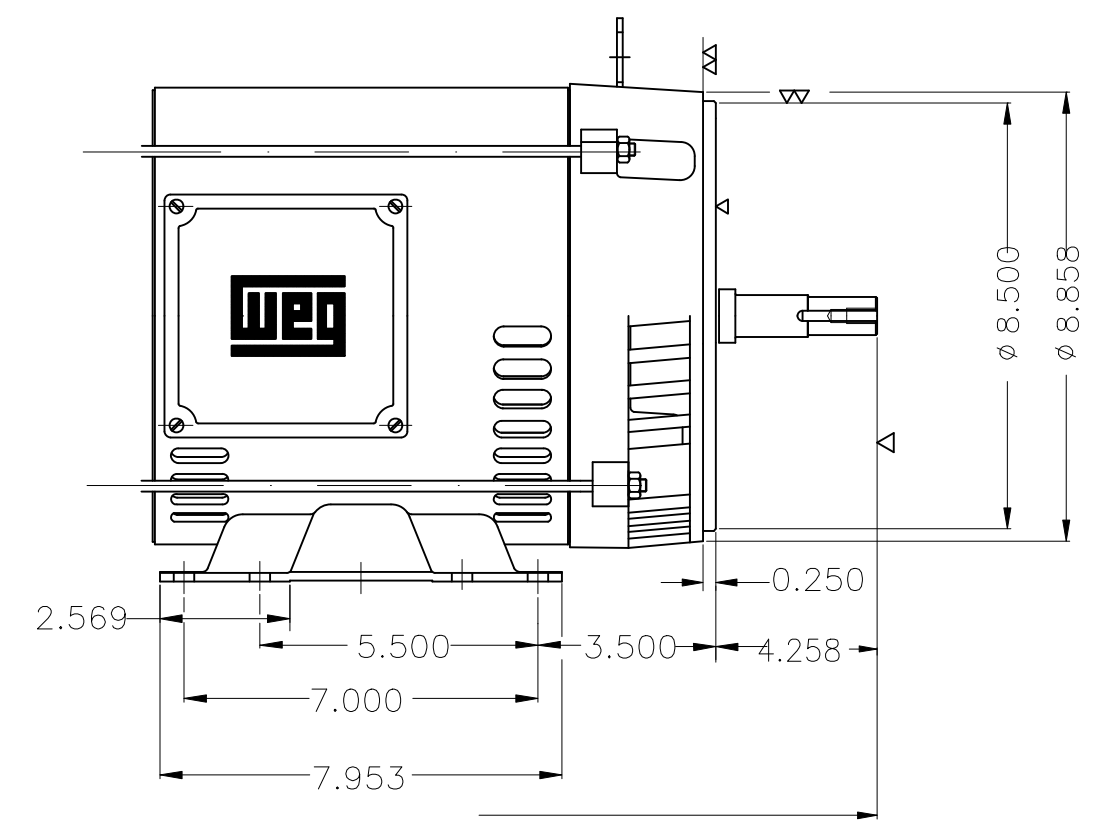
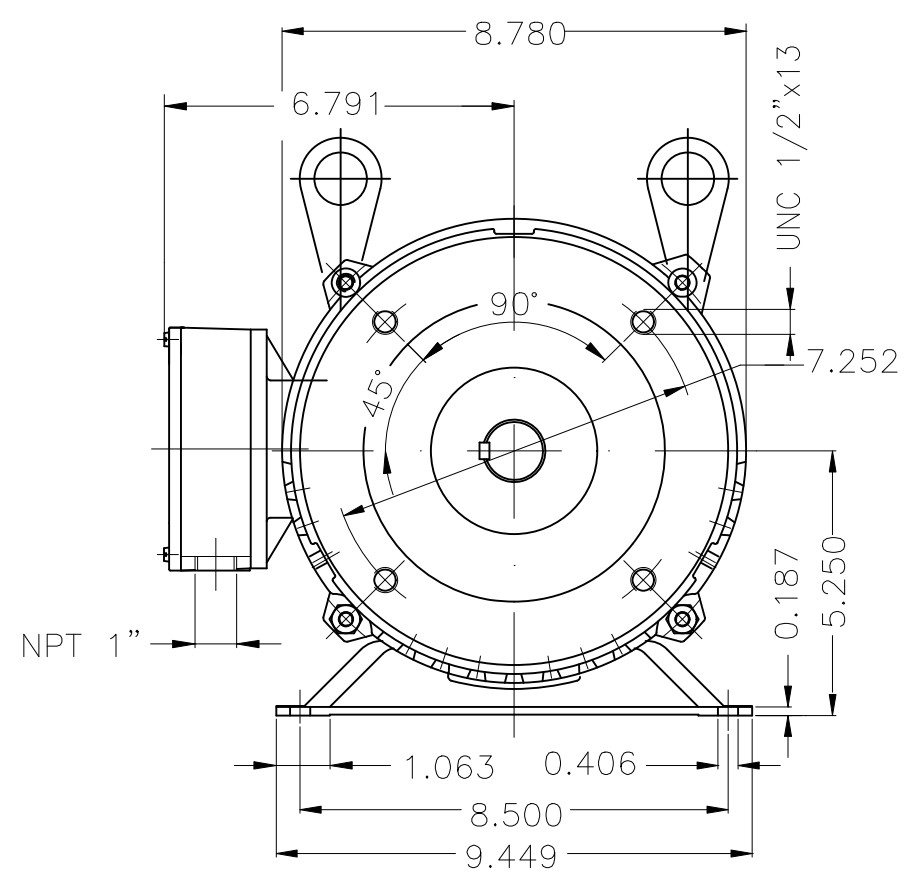


Performance : 575 V 60 Hz 4P

Rated current : 9.90 A
 LRC : 6.5
 Rated torque : 4.11 kgfm
 Locked rotor torque : 210 %
 Breakdown torque : 290 %
 Rated speed : 1765 rpm

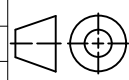

Moment of inertia (J) : 0.0504 kgm²
 Duty cycle : Cont.(S1)
 Insulation class : F
 Service factor : 1.15
 Temperature rise : 105 K
 Design : B

Rev.	Changes Summary	Performed	Checked	Date
Performed by			Page	Revision
Checked by				
Date				



A	
B	
C	
D	
E	

Without switch off thermal protection
 Color RAL 5009
 Painting plan 207A
 Mounting B34D

10 HP 04 Poles 60 Hz						A
HYBRISUSER						00
ECM	LOC	SUMMARY OF MODIFICATIONS	EXECUTED	CHECKED	RELEASED	DATE
EXECUTED	HYBRISUSER	THREE PH. MOTOR JM/JP/JET PUMP NEMA PREM. EFF.				
CHECKED		FRAME 213/5JM IP21 ODP				
RELEASED						
REL. DATE		WMO Jaragua do Sul	Product Engineering			
			PREVIEW WDD 00			
SHEET			1 / 1			