

# DATA SHEET



## Three Phase Induction Motor - Squirrel Cage

Customer :					
Product line		: W22 Close Coupled Pump JM NEMA Premium Efficiency Three-Phase	Product code :	12941830	
Frame	: 254/6JM	Cooling method	: IC411 - TEFC		
Insulation class	: F	Mounting	: F-1		
Duty cycle	: Cont.(S1)	Rotation <sup>1</sup>	: Both (CW and CCW)		
Ambient temperature	: -20°C to +40°C	Starting method	: Direct On Line		
Altitude	: 1000 m.a.s.l.	Approx. weight <sup>2</sup>	: 139 kg		
Protection degree	: IP55	Moment of inertia (J)	: 0.1867 kgm <sup>2</sup>		
Design	: B				
Output [HP]	10	10	10	10	
Poles	6	6	6	6	
Frequency [Hz]	60	50	50	50	
Rated voltage [V]	230/460	380	400	415	
Rated current [A]	26.6/13.3	15.4	14.8	14.4	
L. R. Amperes [A]	173/86.5	78.5	84.4	87.8	
LRC [A]	6.5x(Code H)	5.1x(Code F)	5.7x(Code G)	6.1x(Code H)	
No load current [A]	12.0/6.00	6.40	6.80	7.20	
Rated speed [RPM]	1175	965	970	975	
Slip [%]	2.08	3.50	3.00	2.50	
Rated torque [kgfm]	6.17	7.50	7.48	7.44	
Locked rotor torque [%]	229	170	200	220	
Breakdown torque [%]	280	220	240	260	
Service factor	1.25	1.00	1.15	1.15	
Temperature rise	80 K	105 K	105 K	80 K	
Locked rotor time	46s (cold) 26s (hot)	39s (cold) 22s (hot)	39s (cold) 22s (hot)	39s (cold) 22s (hot)	
Noise level <sup>2</sup>	59.0 dB(A)	57.0 dB(A)	57.0 dB(A)	57.0 dB(A)	
Efficiency (%)	25%				
	50%	90.2	90.2	89.5	
	75%	91.0	89.5	90.2	
	100%	91.0	89.1	89.5	
Power Factor	25%				
	50%	0.63	0.66	0.63	
	75%	0.74	0.79	0.77	
	100%	0.78	0.83	0.82	
Losses at normative operating points (speed;torque), in percentage of rated output power					
Losses (%)	P1 (0,9;1,0)	9.8	9.8	9.8	9.8
	P2 (0,5;1,0)	8.4	8.4	8.4	8.4
	P3 (0,25;1,0)	7.8	7.8	7.8	7.8
	P4 (0,9;0,5)	5.0	5.0	5.0	5.0
	P5 (0,5;0,5)	3.6	3.6	3.6	3.6
	P6 (0,5;0,25)	2.5	2.5	2.5	2.5
	P7 (0,25;0,25)	1.8	1.8	1.8	1.8
Bearing type	: Drive end : 6309 C3 Non drive end : 6209 C3	Foundation loads			
Sealing	: V'Ring V'Ring	Max. traction	: 235 kgf		
Lubrication interval	: 20000 h 20000 h	Max. compression	: 374 kgf		
Lubricant amount	: 13 g 9 g				
Lubricant type	: Mobil Polyrex EM				
This revision replaces and cancel the previous one, which must be eliminated. (1) Looking the motor from the shaft end. (2) Measured at 1m and with tolerance of +3dB(A).		These are average values based on tests with sinusoidal power supply, subject to the tolerances stipulated in NEMA MG-1.			
Rev.	Changes Summary	Performed	Checked	Date	
Performed by					
Checked by			Page	Revision	
Date	23/10/2024		1 / 6		

# DATA SHEET

## Three Phase Induction Motor - Squirrel Cage



Customer : \_\_\_\_\_

Notes  
USABLE @208V 28.5A SF 1.15 SFA 32.8A

Rev.	Changes Summary	Performed	Checked	Date
Performed by				
Checked by			Page	Revision
Date	23/10/2024		2 / 6	

# LOAD PERFORMANCE CURVE

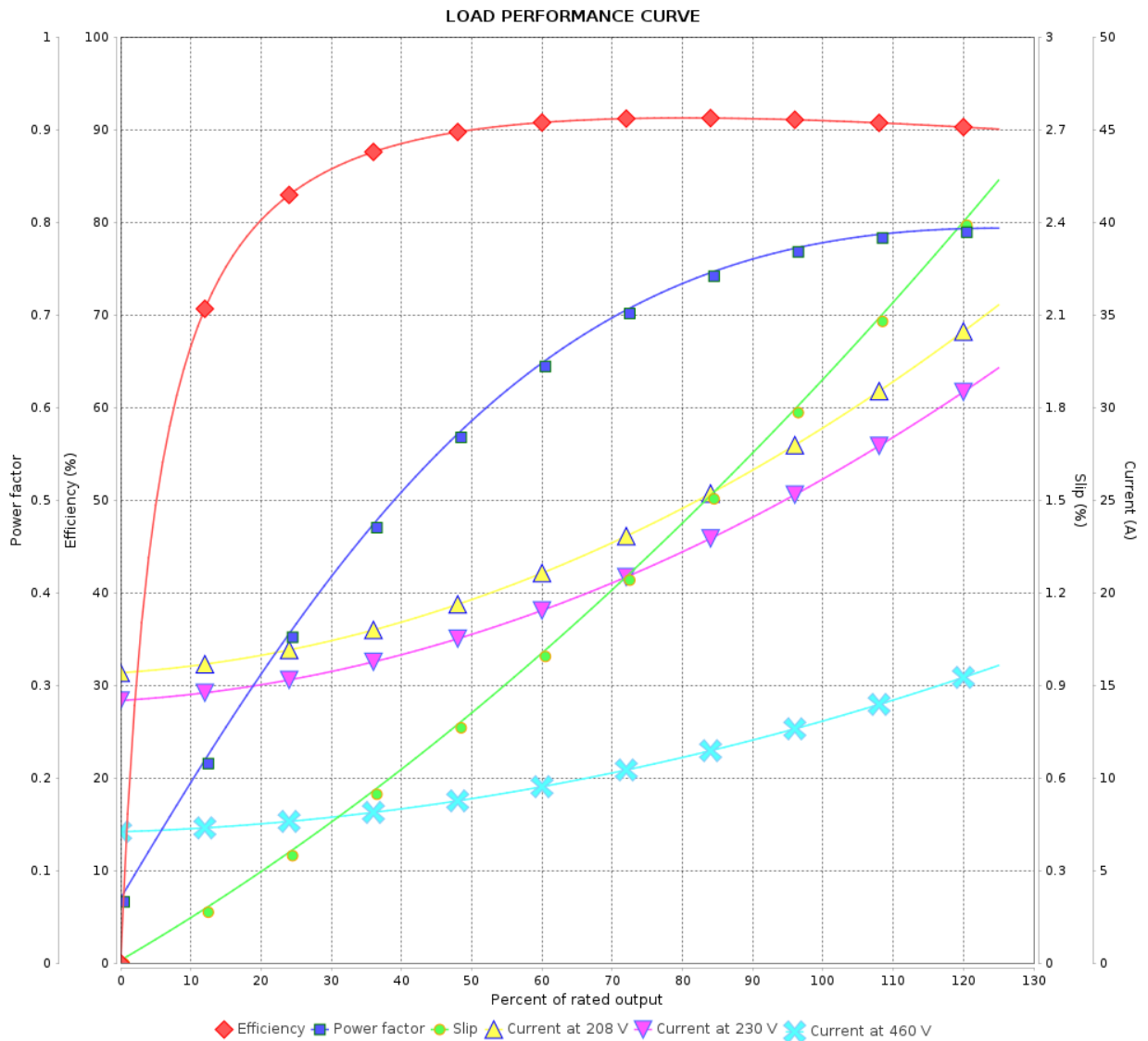
## Three Phase Induction Motor - Squirrel Cage



Customer :

Product line : W22 Close Coupled Pump JM  
NEMA Premium Efficiency Three-Phase

Product code : 12941830



Performance : 230/460 V 60 Hz 6P

Rated current : 26.6/13.3 A  
LRC : 6.5  
Rated torque : 6.17 kgfm  
Locked rotor torque : 229 %  
Breakdown torque : 280 %  
Rated speed : 1175 rpm

Moment of inertia (J) : 0.1867 kgm<sup>2</sup>  
Duty cycle : Cont.(S1)  
Insulation class : F  
Service factor : 1.25  
Temperature rise : 80 K  
Design : B

Rev.	Changes Summary	Performed	Checked	Date
Performed by			Page	Revision
Checked by				
Date				

# LOAD PERFORMANCE CURVE

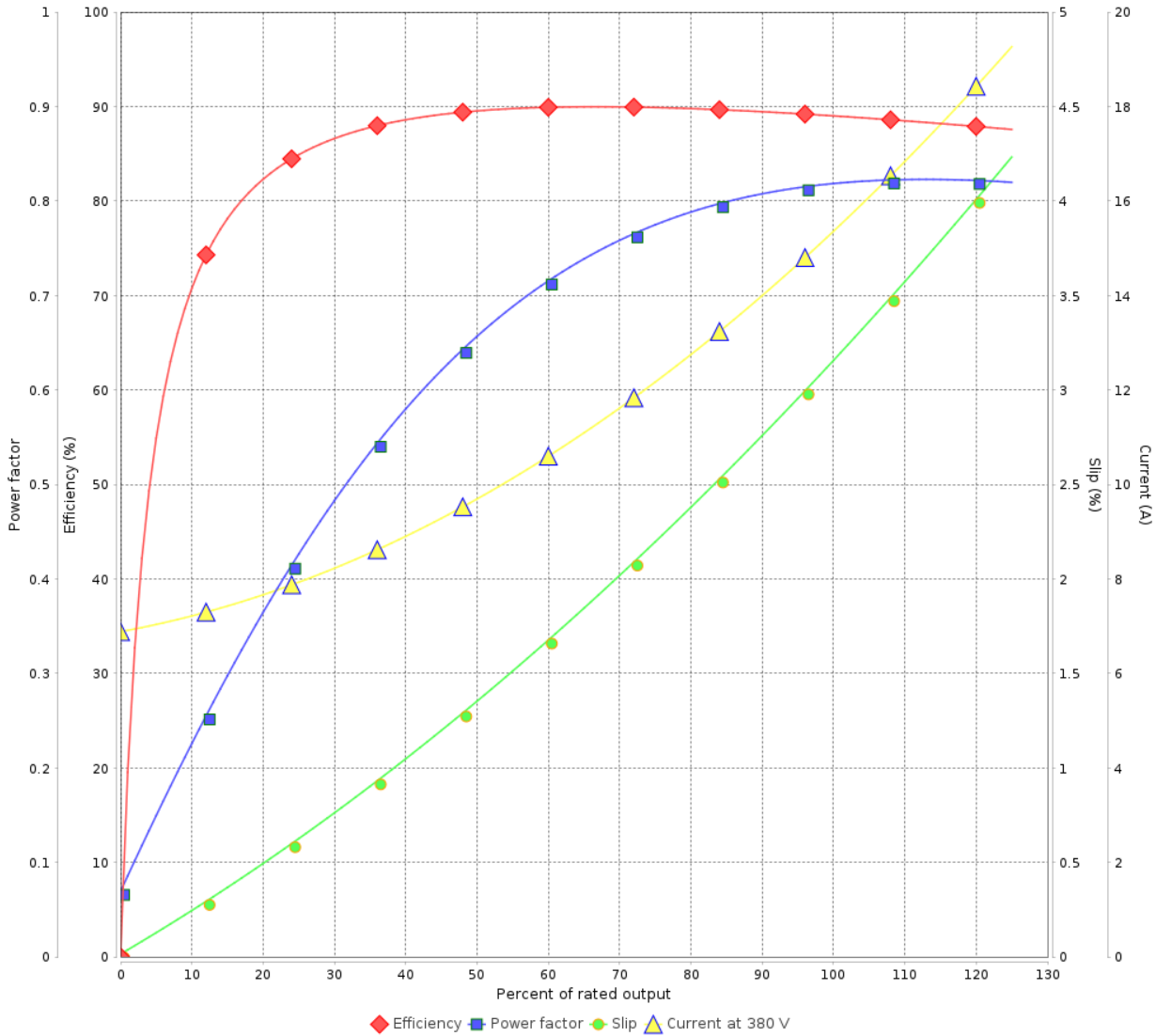
Three Phase Induction Motor - Squirrel Cage



Customer :

Product line : W22 Close Coupled Pump JM  
 NEMA Premium Efficiency Three-Phase  
 Product code : 12941830

LOAD PERFORMANCE CURVE



Performance : 380 V 50 Hz 6P IE3

Rated current	: 15.4 A	Moment of inertia (J)	: 0.1867 kgm <sup>2</sup>
LRC	: 5.1	Duty cycle	: Cont.(S1)
Rated torque	: 7.50 kgfm	Insulation class	: F
Locked rotor torque	: 170 %	Service factor	: 1.00
Breakdown torque	: 220 %	Temperature rise	: 105 K
Rated speed	: 965 rpm	Design	: B

Rev.	Changes Summary	Performed	Checked	Date
Performed by		Page		Revision
Checked by		4 / 6		
Date	23/10/2024			

# LOAD PERFORMANCE CURVE

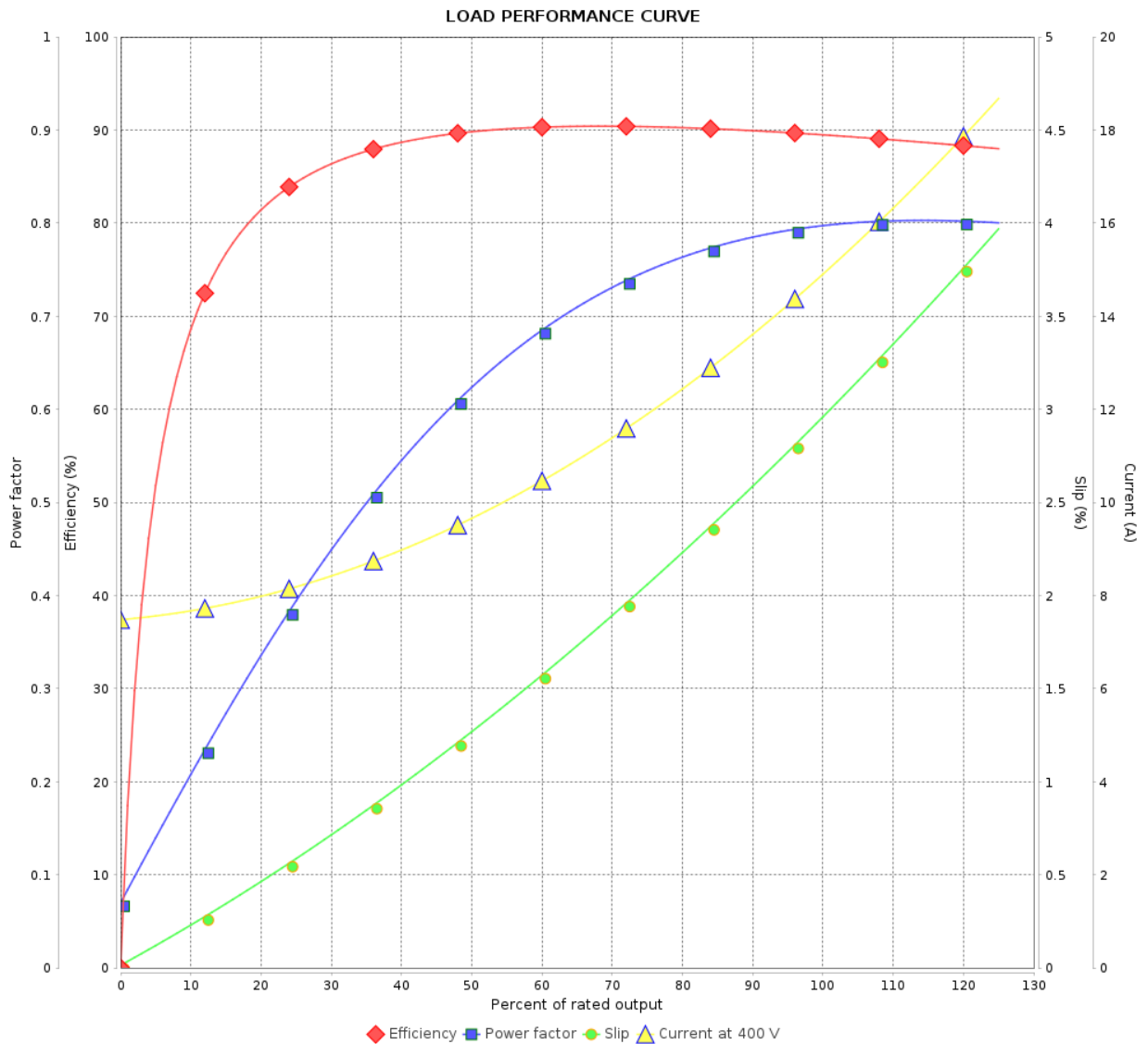
## Three Phase Induction Motor - Squirrel Cage



Customer :

Product line : W22 Close Coupled Pump JM  
NEMA Premium Efficiency Three-Phase

Product code : 12941830



Performance : 400 V 50 Hz 6P IE3

Rated current : 14.8 A  
LRC : 5.7  
Rated torque : 7.48 kgfm  
Locked rotor torque : 200 %  
Breakdown torque : 240 %  
Rated speed : 970 rpm

Moment of inertia (J) : 0.1867 kgm<sup>2</sup>  
Duty cycle : Cont.(S1)  
Insulation class : F  
Service factor : 1.15  
Temperature rise : 105 K  
Design : B

Rev.	Changes Summary	Performed	Checked	Date
Performed by			Page	Revision
Checked by				
Date				

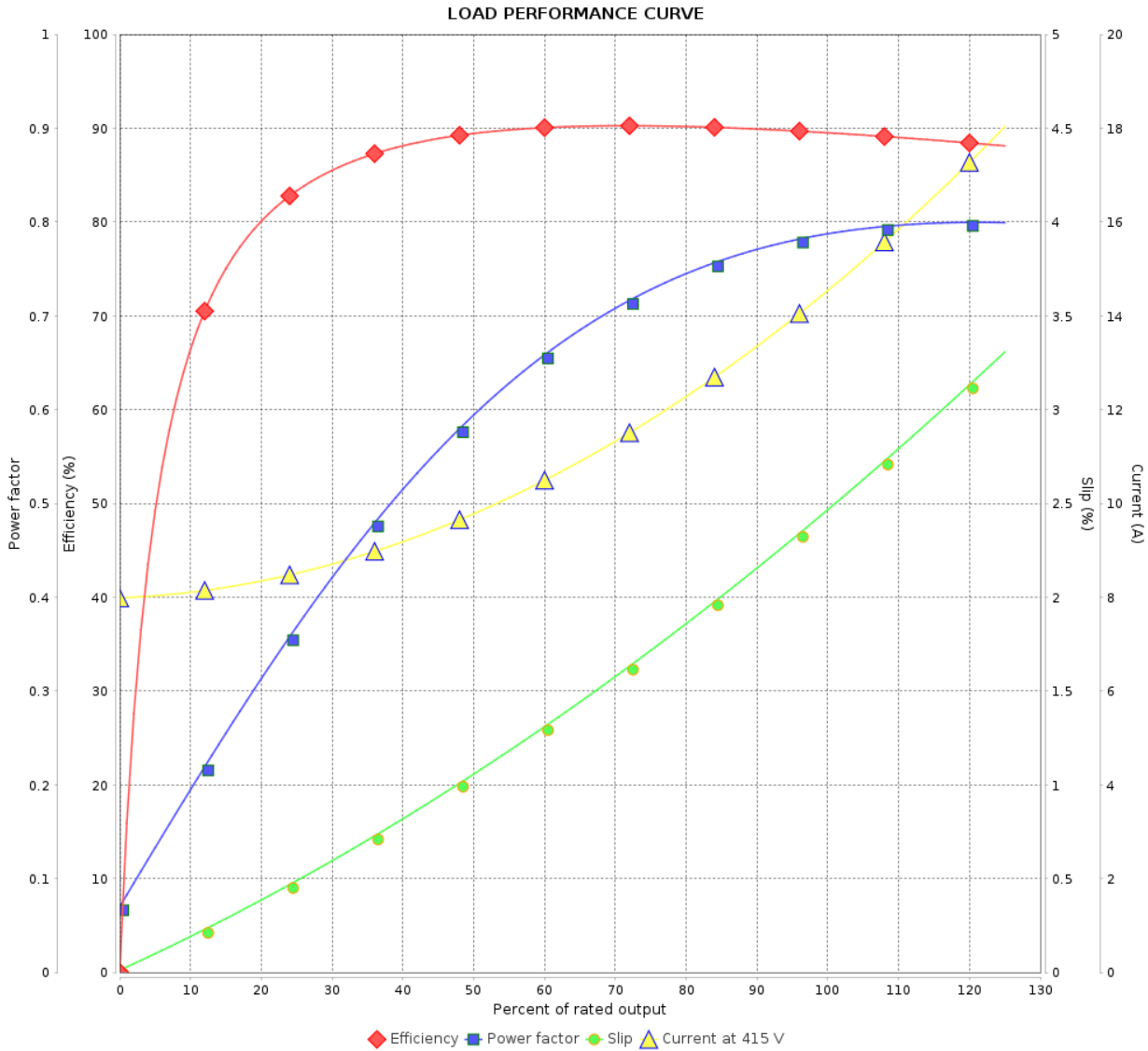
# LOAD PERFORMANCE CURVE

Three Phase Induction Motor - Squirrel Cage



Customer : \_\_\_\_\_

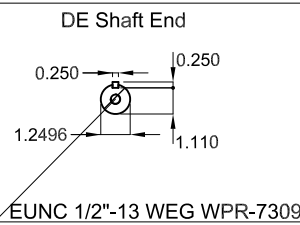
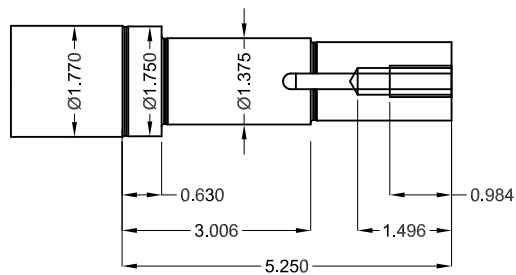
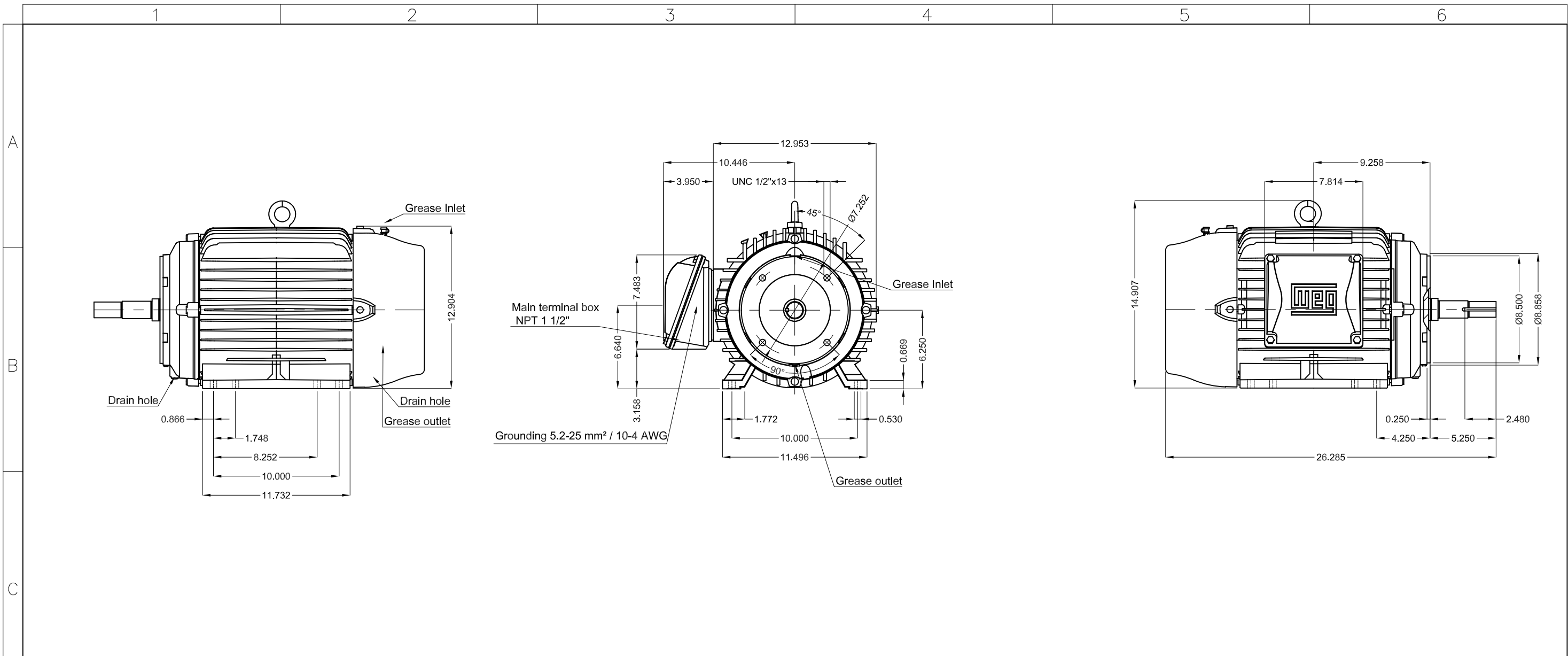
Product line : W22 Close Coupled Pump JM      Product code : 12941830  
 NEMA Premium Efficiency Three-Phase



Performance : 415 V 50 Hz 6P IE3

Rated current	: 14.4 A	Moment of inertia (J)	: 0.1867 kgm <sup>2</sup>
LRC	: 6.1	Duty cycle	: Cont.(S1)
Rated torque	: 7.44 kgfm	Insulation class	: F
Locked rotor torque	: 220 %	Service factor	: 1.15
Breakdown torque	: 260 %	Temperature rise	: 80 K
Rated speed	: 975 rpm	Design	: B

Rev.	Changes Summary	Performed	Checked	Date
Performed by			Page	Revision
Checked by			6 / 6	
Date	23/10/2024			



Color RAL 5009  
 Painting plan 203A  
 Mounting NEMA F-1  
 Mounting B34R(D)

EUNC 1/2"-13 WEG WPR-7309

10 HP 06 Poles 60 Hz A

ECM	LOC	SUMMARY OF MODIFICATIONS	EXECUTED	CHECKED	RELEASED	DATE	VER
EXECUTED	HYBRISUSER	THREE PH. MOTOR JM/JP/JET PUMP W22 NEMA PREM. EFF. FRAME 254/6JM IP55 TEFC					
CHECKED							
RELEASED							
REL. DATE							

HYBRISUSER 00

**PREVIEW**

WDD 00

SHEET /

