

DATA SHEET



Three Phase Induction Motor - Squirrel Cage

Customer :

Product line : Multimounting High Efficiency Three-Phase Product code : 16917260

Frame	: 71	Locked rotor time	: 27s (cold) 15s (hot)
Output	: 0.5 HP (0.37 kW)	Temperature rise	: 80 K
Poles	: 4	Duty cycle	: S1
Frequency	: 50 Hz	Ambient temperature	: -20°C to +40°C
Rated voltage	: 380 V	Altitude	: 1000 m.a.s.l.
Rated current	: 1.13 A	Protection degree	: IP55
L. R. Amperes	: 6.22 A	Cooling method	: IC411 - TEFC
LRC	: 5.5	Mounting	: B34L(E)
No load current	: 0.800 A	Rotation ¹	: Both (CW and CCW)
Rated speed	: 1370 rpm	Noise level ²	: 43.0 dB(A)
Slip	: 8.67 %	Starting method	: Direct On Line
Rated torque	: 0.265 kgfm	Approx. weight ³	: 10.5 kg
Locked rotor torque	: 210 %		
Breakdown torque	: 210 %		
Insulation class	: F		
Service factor	: 1.15		
Moment of inertia (J)	: 0.0008 kgm ²		
Design	: N		

Output	50%	75%	100%	Foundation loads	
Efficiency (%)	68.0	71.0	73.0	Max. traction	: 16 kgf
Power Factor	0.45	0.58	0.68	Max. compression	: 27 kgf

Losses at normative operating points (speed;torque), in percentage of rated output power

P1 (0,9;1,0)	P2 (0,5;1,0)	P3 (0,25;1,0)	P4 (0,9;0,5)	P5 (0,5;0,5)	P6 (0,5;0,25)	P7 (0,25;0,25)
34.4	28.0	28.4	25.1	18.4	16.7	12.5

		<u>Drive end</u>	<u>Non drive end</u>
Bearing type	:	6202 ZZ	6202 ZZ
Sealing	:	Oil Seal	Oil Seal
Lubrication interval	:	-	-
Lubricant amount	:	-	-
Lubricant type	:	Mobil Polyrex EM	

Notes

This revision replaces and cancel the previous one, which must be eliminated.

- (1) Looking the motor from the shaft end.
- (2) Measured at 1m and with tolerance of +3dB(A).
- (3) Approximate weight subject to changes after manufacturing process.
- (4) At 100% of full load.

These are average values based on tests with sinusoidal power supply, subject to the tolerances stipulated in NEMA MG-1.

Rev.	Changes Summary	Performed	Checked	Date
Performed by				
Checked by			Page	Revision
Date	31/10/2024		1 / 2	

LOAD PERFORMANCE CURVE

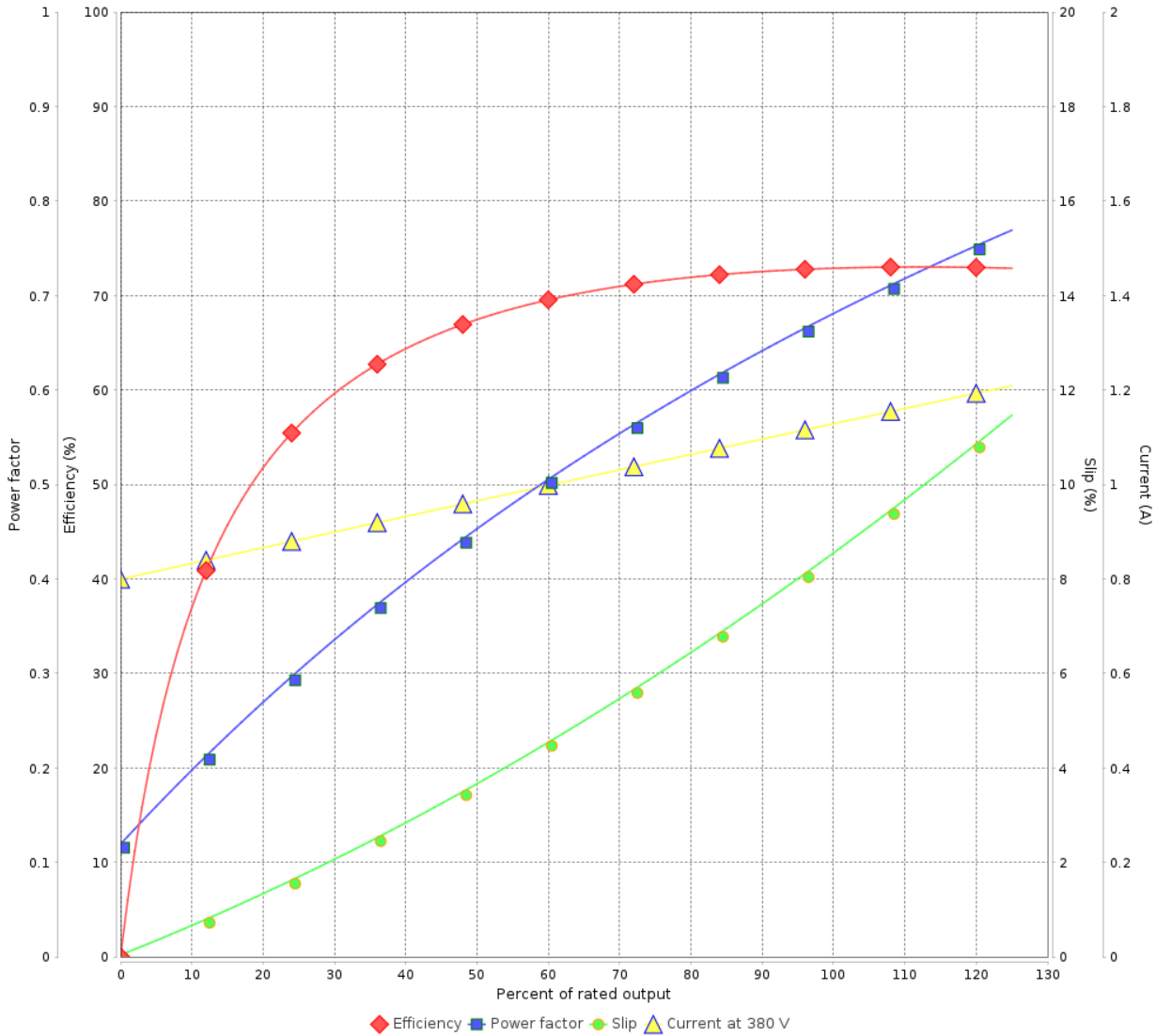
Three Phase Induction Motor - Squirrel Cage



Customer :

Product line : Multimounting High Efficiency Three-Phase Product code : 16917260

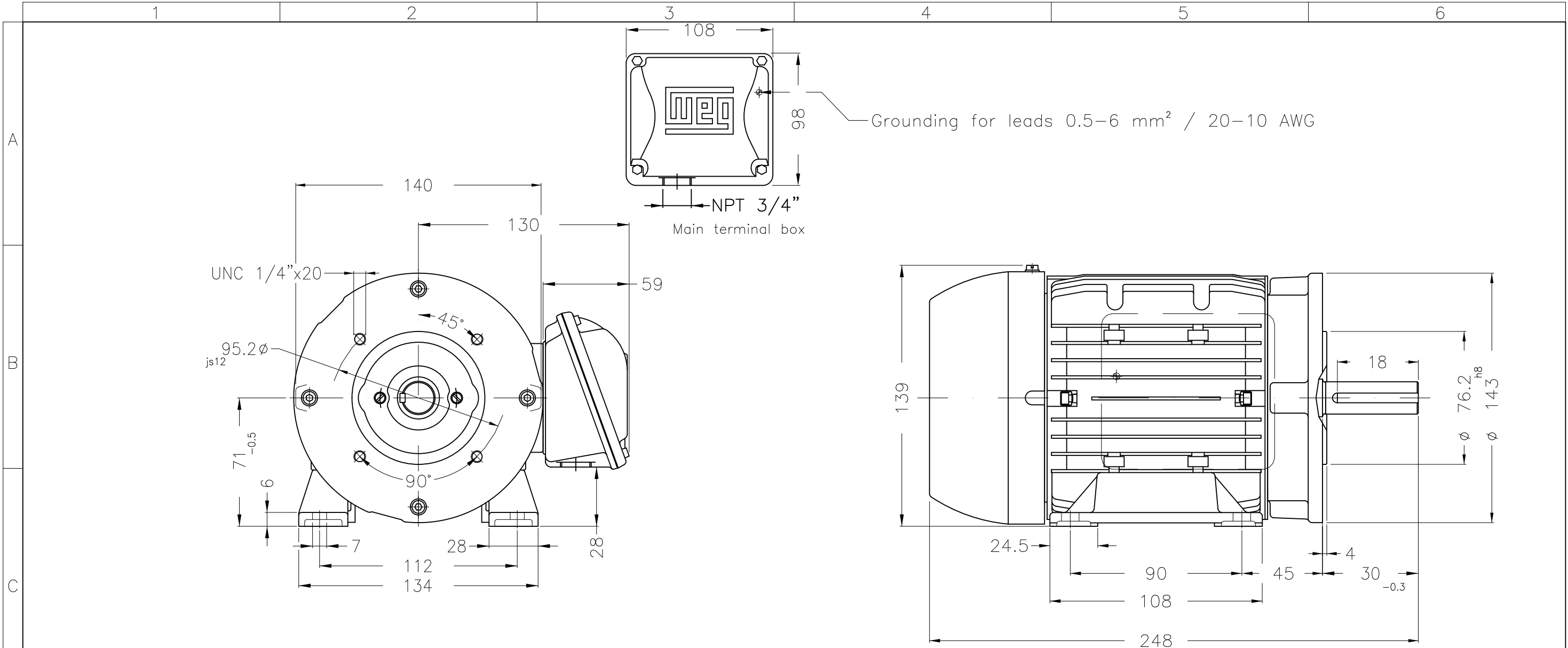
LOAD PERFORMANCE CURVE



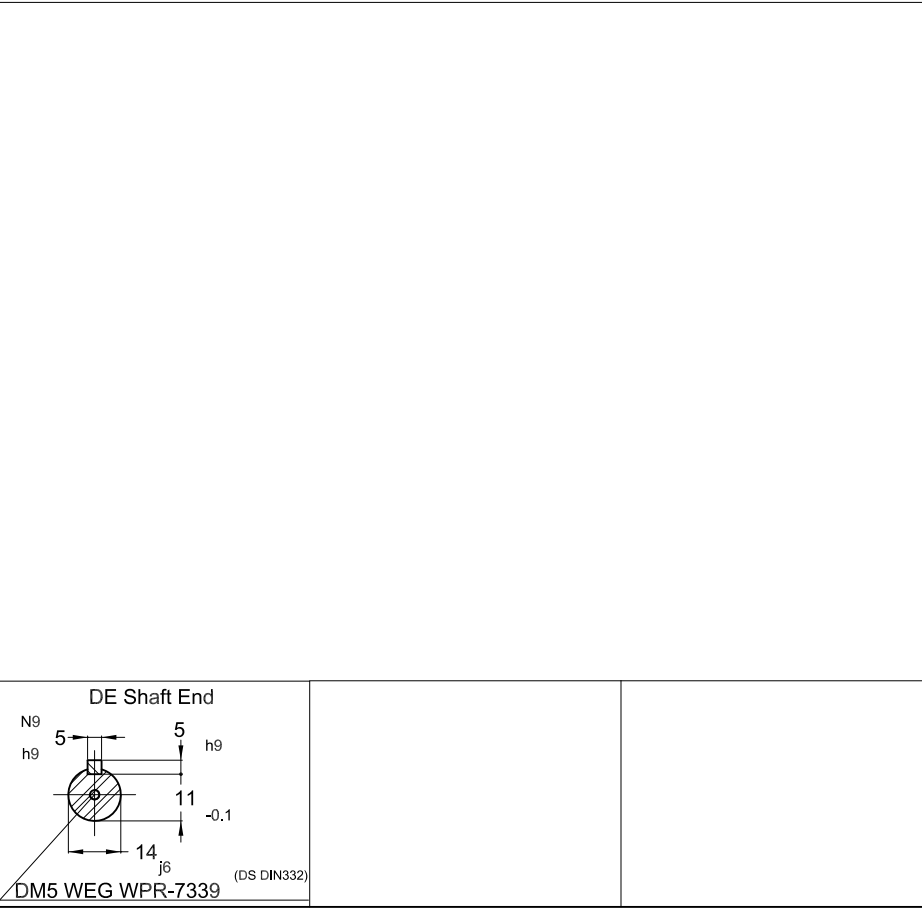
Performance : 380 V 50 Hz 4P

Rated current	: 1.13 A	Moment of inertia (J)	: 0.0008 kgm ²
LRC	: 5.5	Duty cycle	: S1
Rated torque	: 0.265 kgfm	Insulation class	: F
Locked rotor torque	: 210 %	Service factor	: 1.15
Breakdown torque	: 210 %	Temperature rise	: 80 K
Rated speed	: 1370 rpm	Design	: N

Rev.	Changes Summary	Performed	Checked	Date
Performed by			Page 2 / 2	Revision
Checked by				
Date	31/10/2024			



Bearing cap
Color RAL 7022
Painting plan 207N
Mounting B34L(E)



0.5 HP 04 Poles 60 Hz						A			
HYBRISUSER						00			
ECM	LOC	SUMMARY OF MODIFICATIONS			EXECUTED	CHECKED	RELEASED	DATE	VER
EXECUTED	HYBRISUSER	THREE PH. MOTOR MULTIMOUNTIN HIGH EFF.			PREVIEW				
CHECKED		FRAME 71 IP55 TEFC			WDD		00		
RELEASED					SHEET		1 / 1		
REL. DATE		WMO	Jaragua do Sul	Product Engineering					

Dimensions in mm

