

DATA SHEET



Three Phase Induction Motor - Squirrel Cage

Customer					
Product line	: JM Pump NEMA Premium Efficiency Three-Phase	Product code :	13287116		
Frame	: 143/5JM	Cooling method	: IC01 - ODP		
Insulation class	: F	Mounting	: W-6		
Duty cycle	: Cont.(S1)	Rotation ¹	: Both (CW and CCW)		
Ambient temperature	: -20°C to +40°C	Starting method	: Direct On Line		
Altitude	: 1000 m.a.s.l.	Approx. weight ³	: 18.5 kg		
Design	: B	Moment of inertia (J)	: 0.0049 kgm ²		
Output [HP]	2				
Poles	4				
Frequency [Hz]	60				
Rated voltage [V]	575				
Rated current [A]	2.15				
L. R. Amperes [A]	16.6				
LRC [A]	7.7x(Code K)				
No load current [A]	1.10				
Rated speed [RPM]	1740				
Slip [%]	3.33				
Rated torque [kgfm]	0.834				
Locked rotor torque [%]	260				
Breakdown torque [%]	320				
Service factor	1.15				
Temperature rise	80 K				
Locked rotor time	30s (cold) 17s (hot)				
Noise level ²	52.0 dB(A)				
Efficiency (%)	25%				
	50%	85.5			
	75%	86.5			
	100%	86.5			
Power Factor	25%				
	50%	0.61			
	75%	0.74			
	100%	0.81			
Bearing type	: Drive end	Non drive end	Foundation loads		
Sealing	: 6206 ZZ	6203 ZZ	Max. traction	: 67 kgf	
Lubrication interval	: Without	Without	Max. compression	: 85 kgf	
Lubricant amount	: Bearing Seal	Bearing Seal			
Lubricant type	: -	-			
Notes					
This revision replaces and cancel the previous one, which must be eliminated. (1) Looking the motor from the shaft end. (2) Measured at 1m and with tolerance of +3dB(A). (3) Approximate weight subject to changes after manufacturing process. (4) At 100% of full load.			These are average values based on tests with sinusoidal power supply, subject to the tolerances stipulated in NEMA MG-1.		
Rev.	Changes Summary		Performed	Checked	Date
Performed by					
Checked by				Page	Revision
Date	16/05/2022			1 / 2	

LOAD PERFORMANCE CURVE

Three Phase Induction Motor - Squirrel Cage

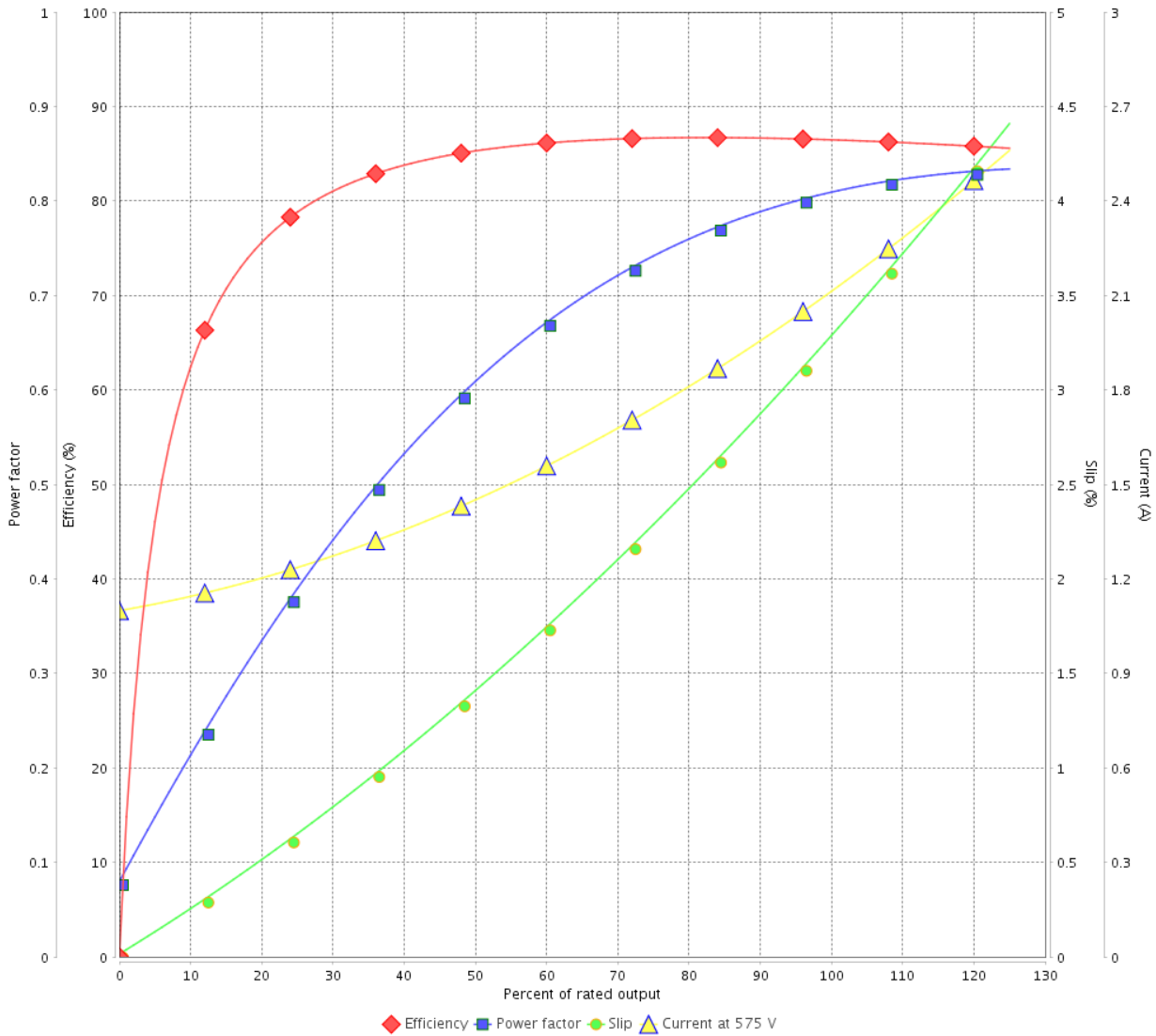


Customer :

Product line : JM Pump NEMA Premium
Efficiency Three-Phase

Product code : 13287116

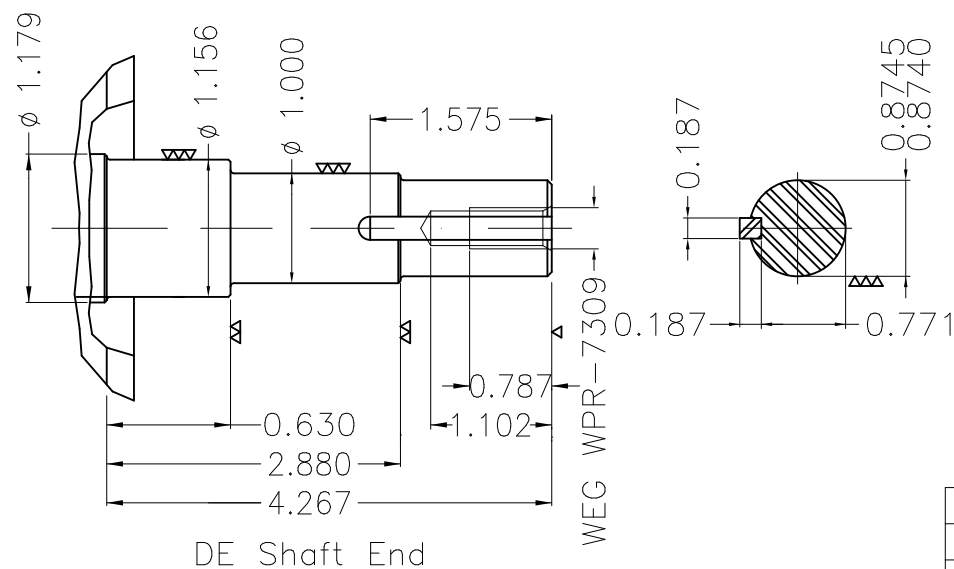
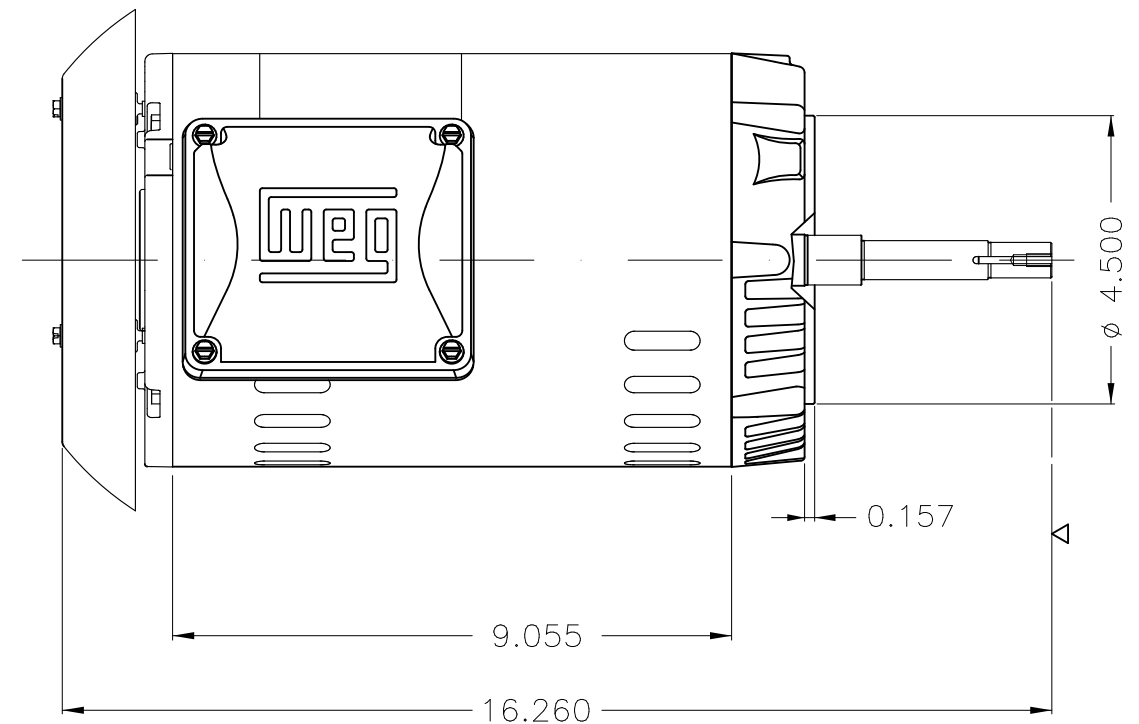
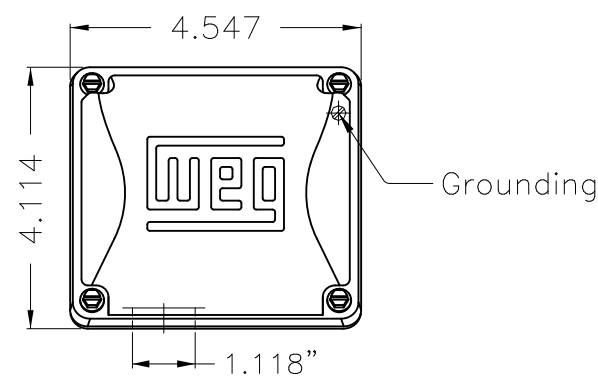
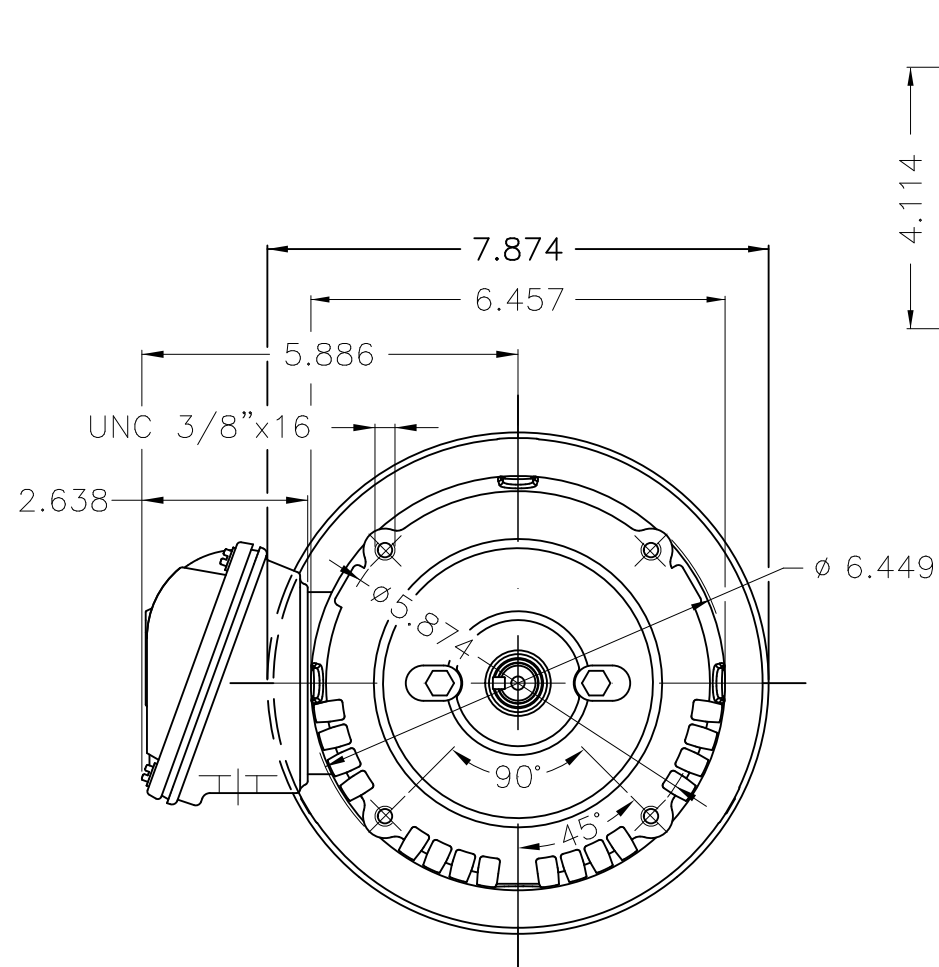
LOAD PERFORMANCE CURVE



Performance : 575 V 60 Hz 4P

Rated current	: 2.15 A	Moment of inertia (J)	: 0.0049 kgm ²
LRC	: 7.7	Duty cycle	: Cont.(S1)
Rated torque	: 0.834 kgfm	Insulation class	: F
Locked rotor torque	: 260 %	Service factor	: 1.15
Breakdown torque	: 320 %	Temperature rise	: 80 K
Rated speed	: 1740 rpm	Design	: B

Rev.	Changes Summary	Performed	Checked	Date
Performed by			Page 2 / 2	Revision
Checked by				
Date	16/05/2022			



EUNC 3/8"-16 WEG WPR-7309

Color Munsell N 1 matte black					
Painting plan 207N					
Mounting W-6/V18R(D)					
				HYBRISUSER	00
ECM	LOC	SUMMARY OF MODIFICATIONS	EXECUTED	CHECKED	RELEASED
EXECUTED	HYBRISUSER	THREE PH. MOTOR ROLLED STEEL CLOSE COUPLED PUMP IN TYPE NEW PREM. EFF.			
CHECKED		FRAME 143/5JM IP21 ODP			
RELEASED					
REL. DATE	WMO	Jaragua do Sul	Product Engineering	WDD	00
				SHEET	1 / 1

2 HP 04 Poles 60 Hz

