

DATA SHEET



Three Phase Induction Motor - Squirrel Cage

Customer	:			
Product line	: JM Pump NEMA Premium Efficiency Three-Phase	Product code : 14808417		
Frame	: 143/5JM	Cooling method : IC411 - TEFC		
Insulation class	: F	Mounting : F-1		
Duty cycle	: Cont.(S1)	Rotation ¹ : Both (CW and CCW)		
Ambient temperature	: -20°C to +40°C	Starting method : Direct On Line		
Altitude	: 1000 m.a.s.l.	Approx. weight ³ : 19.2 kg		
Protection degree	: IP55	Moment of inertia (J) : 0.0046 kgm ²		
Design	: B			
Output [HP]		1.5		
Poles		4		
Frequency [Hz]		60		
Rated voltage [V]		575		
Rated current [A]		1.62		
L. R. Amperes [A]		13.3		
LRC [A]		8.2x(Code K)		
No load current [A]		0.867		
Rated speed [RPM]		1750		
Slip [%]		2.78		
Rated torque [kgfm]		0.622		
Locked rotor torque [%]		270		
Breakdown torque [%]		300		
Service factor		1.15		
Temperature rise		80 K		
Locked rotor time		37s (cold) 21s (hot)		
Noise level ²		52.0 dB(A)		
Efficiency (%)	25%	85.2		
	50%	85.5		
	75%	86.5		
	100%	86.5		
Power Factor	25%	0.35		
	50%	0.59		
	75%	0.72		
	100%	0.79		
Bearing type	: <u>Drive end</u> 6206 ZZ <u>Non drive end</u> 6203 ZZ	Foundation loads		
Sealing	: V'Ring V'Ring	Max. traction : 43 kgf		
Lubrication interval	: - -	Max. compression : 63 kgf		
Lubricant amount	: - -			
Lubricant type	: Mobil Polyrex EM			
Notes				
<p>This revision replaces and cancel the previous one, which must be eliminated.</p> <p>(1) Looking the motor from the shaft end.</p> <p>(2) Measured at 1m and with tolerance of +3dB(A).</p> <p>(3) Approximate weight subject to changes after manufacturing process.</p> <p>(4) At 100% of full load.</p>		<p>These are average values based on tests with sinusoidal power supply, subject to the tolerances stipulated in NEMA MG-1.</p>		
Rev.	Changes Summary	Performed	Checked	Date
Performed by				
Checked by			Page	Revision
Date	16/05/2022		1 / 2	

LOAD PERFORMANCE CURVE

Three Phase Induction Motor - Squirrel Cage

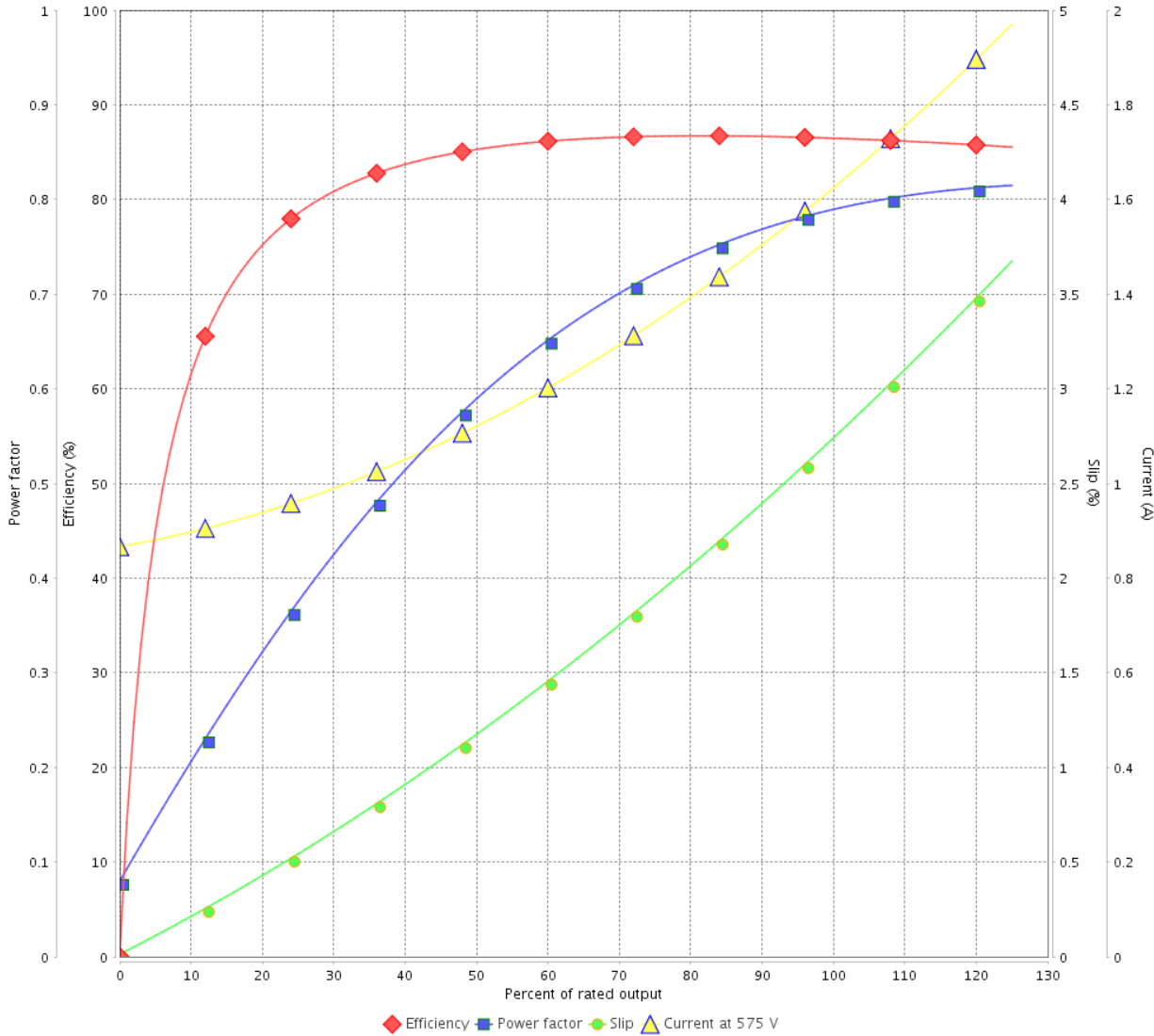


Customer : _____

Product line : JM Pump NEMA Premium
Efficiency Three-Phase

Product code : 14808417

LOAD PERFORMANCE CURVE

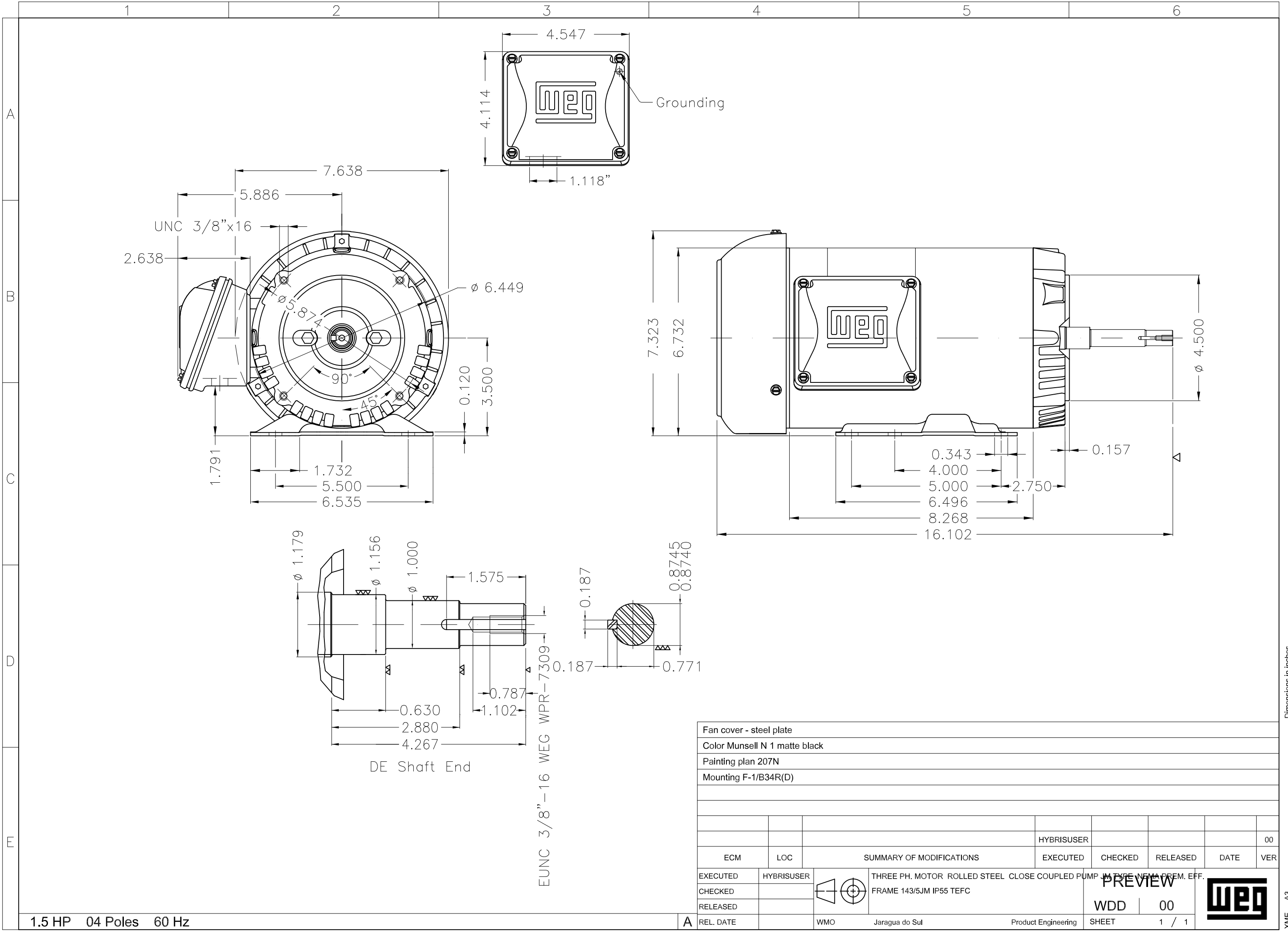


Performance : 575 V 60 Hz 4P

Rated current : 1.62 A
LRC : 8.2
Rated torque : 0.622 kgfm
Locked rotor torque : 270 %
Breakdown torque : 300 %
Rated speed : 1750 rpm

Moment of inertia (J) : 0.0046 kgm²
Duty cycle : Cont.(S1)
Insulation class : F
Service factor : 1.15
Temperature rise : 80 K
Design : B

Rev.	Changes Summary	Performed	Checked	Date
Performed by			Page 2 / 2	Revision
Checked by				
Date	16/05/2022			



Fan cover - steel plate					
Color Munsell N 1 matte black					
Painting plan 207N					
Mounting F-1/B34R(D)					
				HYBRISUSER	00
ECM	LOC	SUMMARY OF MODIFICATIONS		EXECUTED	CHECKED
EXECUTED	HYBRISUSER	THREE PH. MOTOR ROLLED STEEL CLOSE COUPLED PUMP IN TYPE NEW PREM. EFF.			
CHECKED		FRAME 143/5JM IP55 TEFC			
RELEASED					
REL. DATE		WMO	Jaragua do Sul	Product Engineering	
				WDD	00
				SHEET	1 / 1

1.5 HP 04 Poles 60 Hz