

# DATA SHEET

## Three Phase Induction Motor - Squirrel Cage



Customer :

Product line : JM Pump NEMA Premium Efficiency Three-Phase Product code : 12676960

Frame	: 143/5JM	Cooling method	: IC01 - ODP
Insulation class	: F	Mounting	: F-1
Duty cycle	: Cont.(S1)	Rotation <sup>1</sup>	: Both (CW and CCW)
Ambient temperature	: -20°C to +40°C	Starting method	: Direct On Line
Altitude	: 1000 m.a.s.l.	Approx. weight <sup>2</sup>	: 19.9 kg
Design	: B	Moment of inertia (J)	: 0.0060 kgm <sup>2</sup>

Output [HP]	1.5	1.5	1.5
Poles	4	4	4
Frequency [Hz]	60	50	50
Rated voltage [V]	230/460	190/380	220/415
Rated current [A]	4.14/2.07	4.84/2.42	4.41/2.34
L. R. Amperes [A]	36.0/18.0	31.0/15.5	30.9/16.4
LRC [A]	8.7x(Code L)	6.4x(Code H)	7.0x(Code J)
No load current [A]	2.40/1.20	2.36/1.18	2.41/1.28
Rated speed [RPM]	1760	1440	1445
Slip [%]	2.22	4.00	3.67
Rated torque [kgfm]	0.619	0.756	0.753
Locked rotor torque [%]	280	190	220
Breakdown torque [%]	330	250	280
Service factor		1.15	1.15
Temperature rise	80 K	80 K	80 K
Locked rotor time	27s (cold) 15s (hot)	0s (cold) 0s (hot)	0s (cold) 0s (hot)
Noise level <sup>2</sup>	52.0 dB(A)	49.0 dB(A)	49.0 dB(A)
Efficiency (%)	25%	83.6	85.3
	50%	84.0	84.3
	75%	86.5	84.7
	100%	86.5	83.2
Power Factor	25%	0.32	0.38
	50%	0.56	0.64
	75%	0.69	0.77
	100%	0.77	0.83

	<u>Drive end</u>	<u>Non drive end</u>	Foundation loads
Bearing type	: 6206 ZZ	6203 ZZ	Max. traction : 50 kgf
Sealing	: Without	Without	Max. compression : 70 kgf
	Bearing Seal	Bearing Seal	
Lubrication interval	: -	-	
Lubricant amount	: -	-	
Lubricant type	: Mobil Polyrex EM		

Notes  
USABLE @208V 4.58A SF 1.00 SFA 4.58A

This revision replaces and cancel the previous one, which must be eliminated.  
(1) Looking the motor from the shaft end.  
(2) Measured at 1m and with tolerance of +3dB(A).  
(3) Approximate weight subject to changes after manufacturing process.  
(4) At 100% of full load.

These are average values based on tests with sinusoidal power supply, subject to the tolerances stipulated in NEMA MG-1.

Rev.	Changes Summary	Performed	Checked	Date
Performed by				
Checked by				
Date	16/05/2022			

Page 1 / 4  
Revision

# LOAD PERFORMANCE CURVE

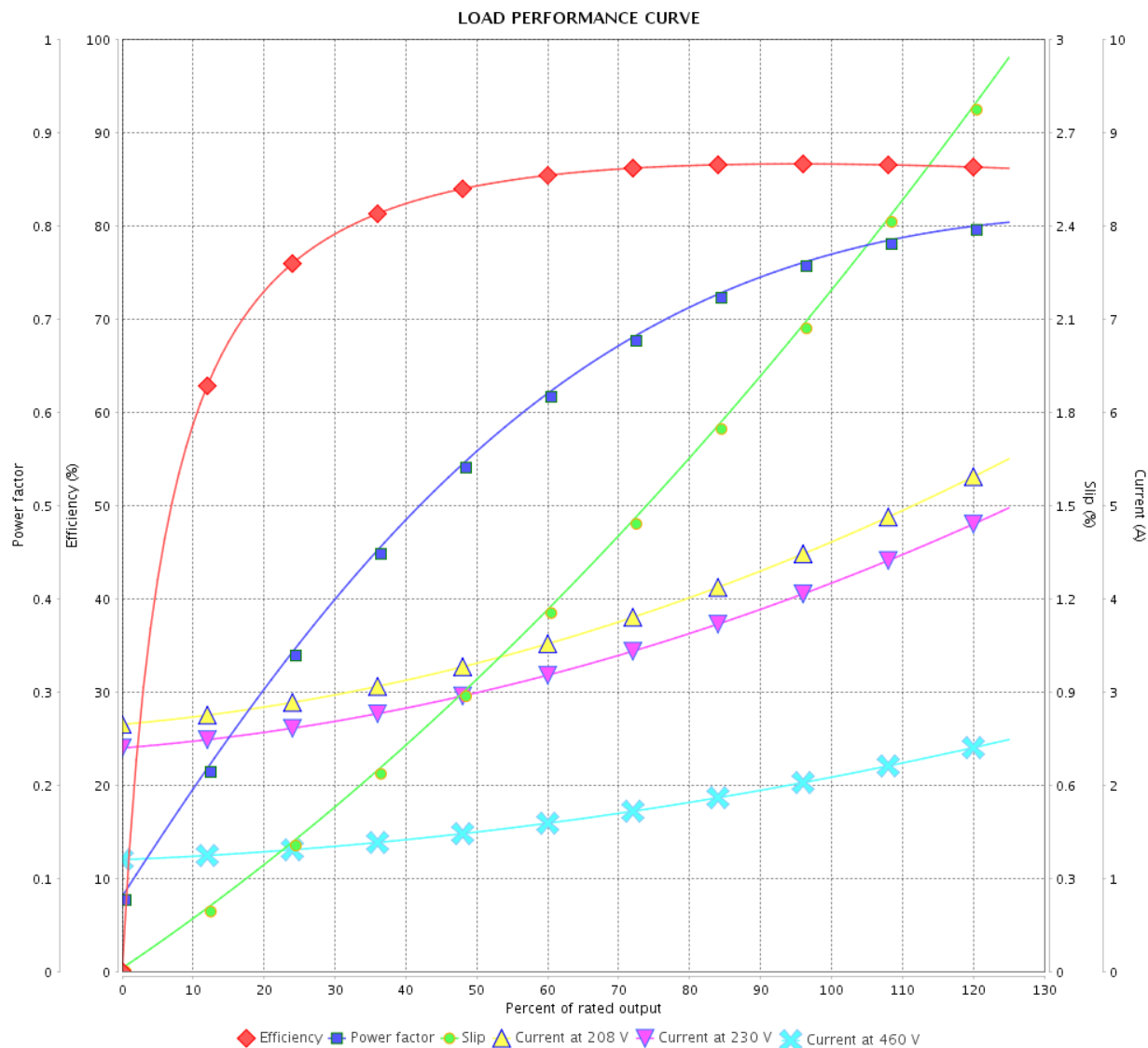
## Three Phase Induction Motor - Squirrel Cage



Customer :

Product line : JM Pump NEMA Premium  
Efficiency Three-Phase

Product code : 12676960



Performance : 230/460 V 60 Hz 4P

Rated current : 4.14/2.07 A  
 LRC : 8.7  
 Rated torque : 0.619 kgfm  
 Locked rotor torque : 280 %  
 Breakdown torque : 330 %  
 Rated speed : 1760 rpm

Moment of inertia (J) : 0.0060 kgm<sup>2</sup>  
 Duty cycle : Cont.(S1)  
 Insulation class : F  
 Service factor :  
 Temperature rise : 80 K  
 Design : B

Rev.	Changes Summary		Performed	Checked	Date
Performed by				Page	Revision
Checked by				2 / 4	
Date					

# LOAD PERFORMANCE CURVE

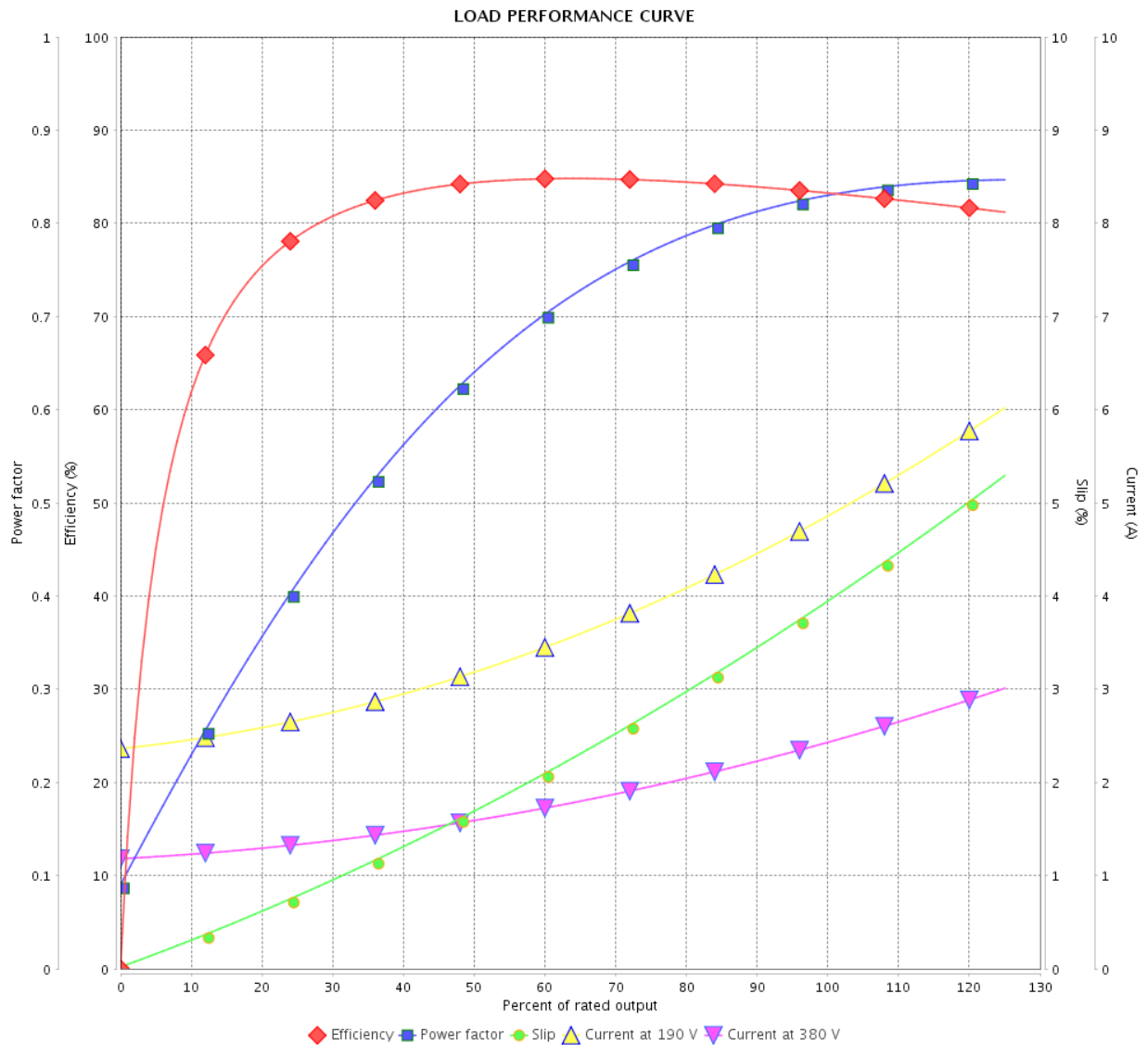
## Three Phase Induction Motor - Squirrel Cage



Customer :

Product line : JM Pump NEMA Premium  
Efficiency Three-Phase

Product code : 12676960



Performance : 190/380 V 50 Hz 4P

Rated current : 4.84/2.42 A  
LRC : 6.4  
Rated torque : 0.756 kgfm  
Locked rotor torque : 190 %  
Breakdown torque : 250 %  
Rated speed : 1440 rpm

Moment of inertia (J) : 0.0060 kgm<sup>2</sup>  
Duty cycle : Cont.(S1)  
Insulation class : F  
Service factor : 1.15  
Temperature rise : 80 K  
Design : B

Rev.	Changes Summary	Performed	Checked	Date
Performed by				Page 3 / 4
Checked by				
Date				
16/05/2022				Revision

# LOAD PERFORMANCE CURVE

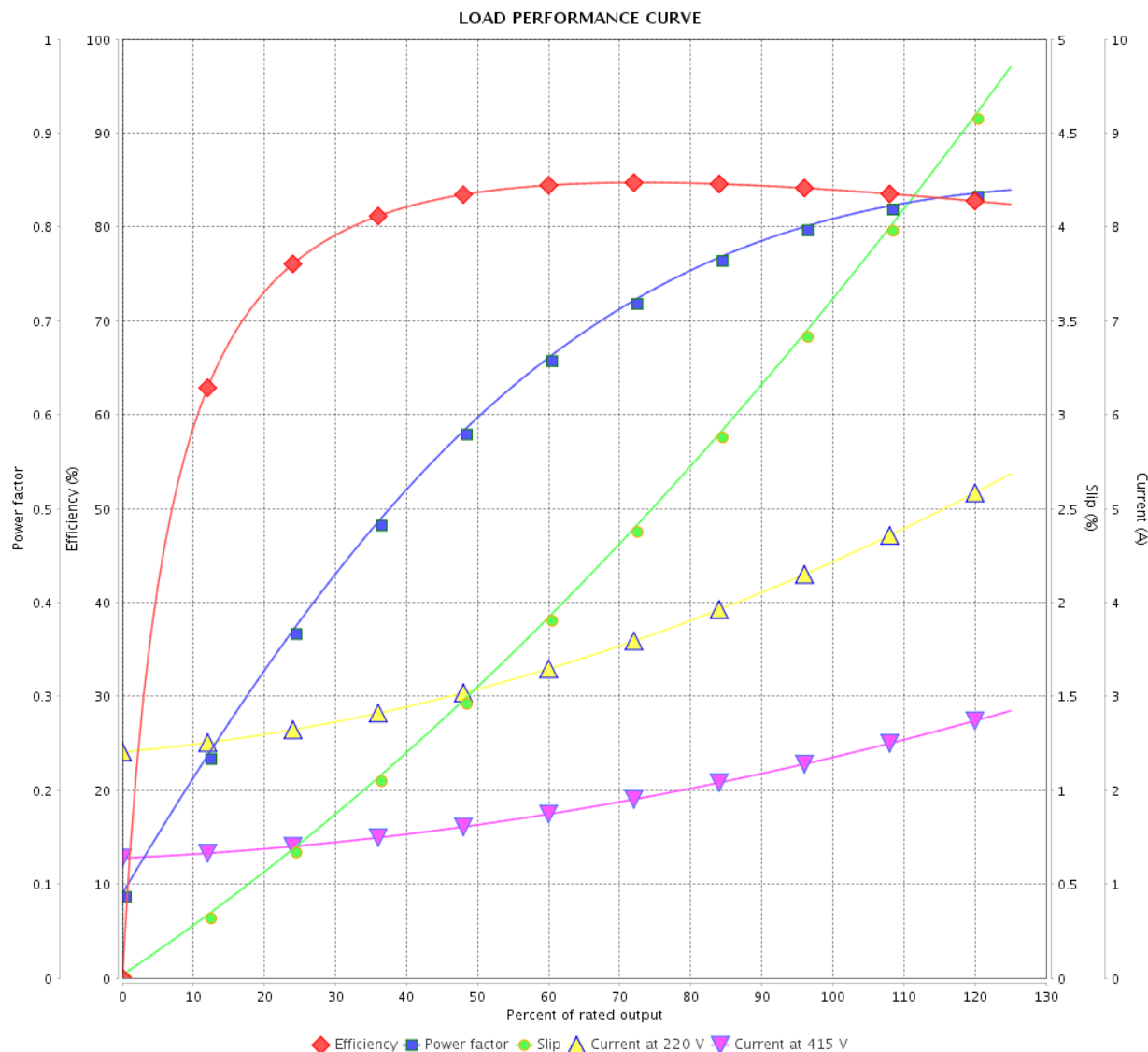
## Three Phase Induction Motor - Squirrel Cage



Customer :

Product line : JM Pump NEMA Premium  
Efficiency Three-Phase

Product code : 12676960

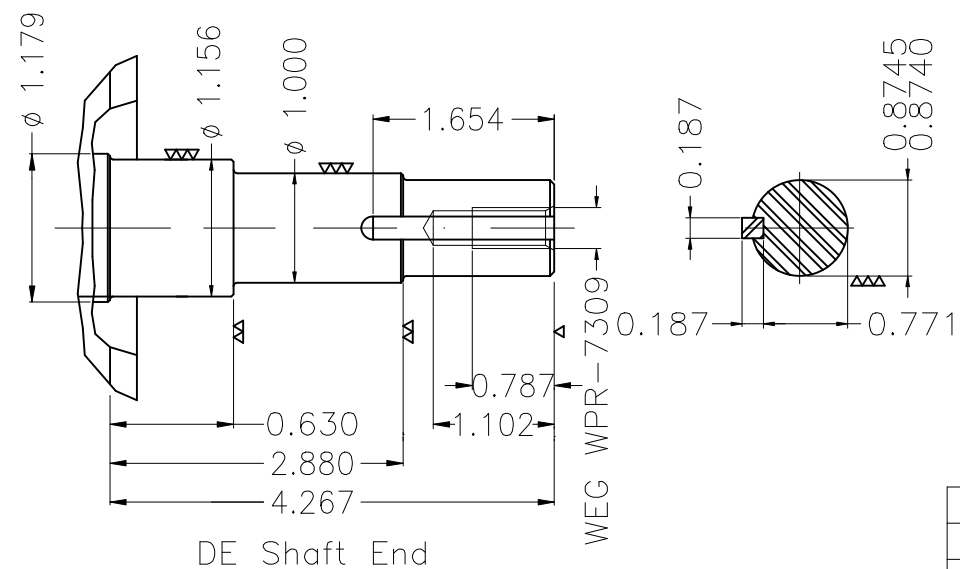
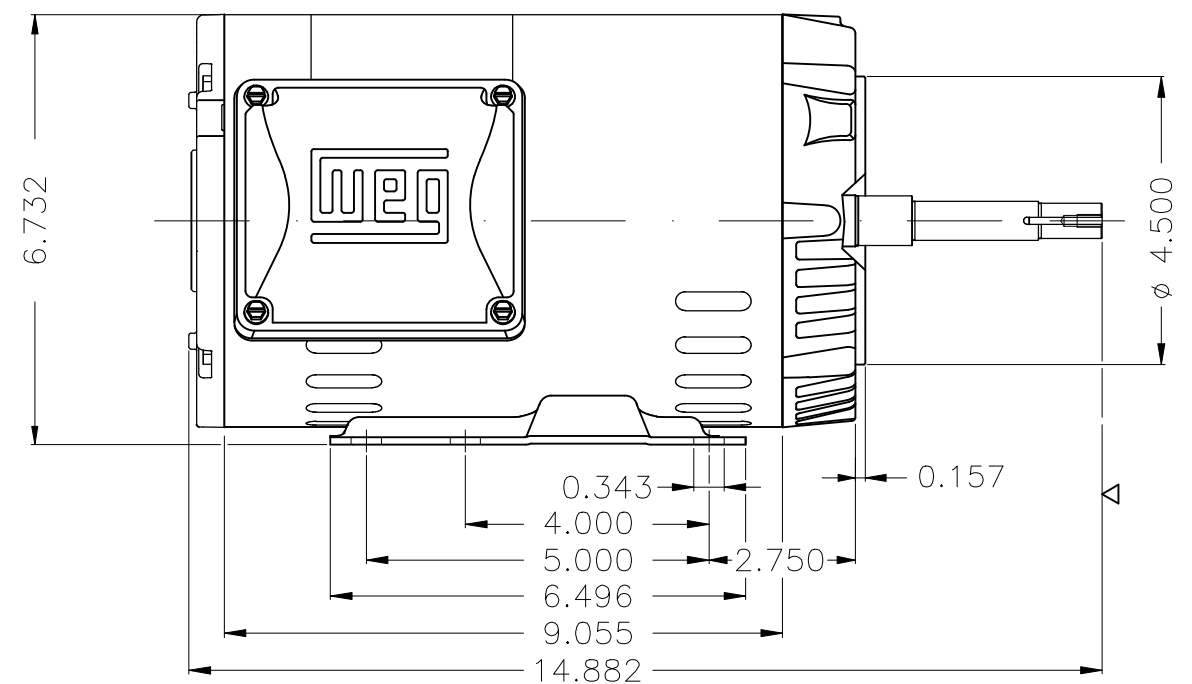
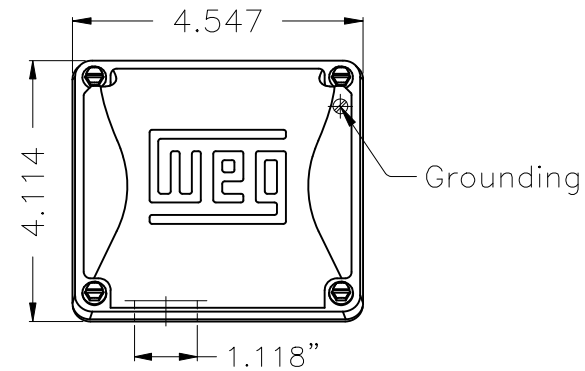
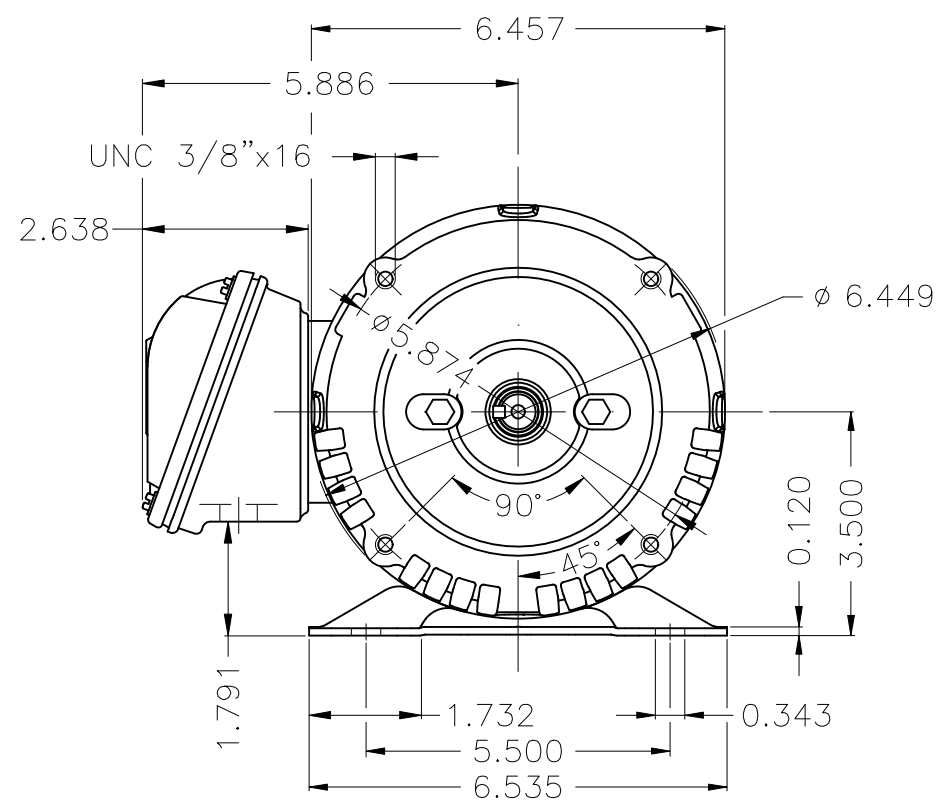


Performance : 220/415 V 50 Hz 4P



Rated current : 4.41/2.34 A  
LRC : 7.0  
Rated torque : 0.753 kgfm  
Locked rotor torque : 220 %  
Breakdown torque : 280 %  
Rated speed : 1445 rpm

Moment of inertia (J) : 0.0060 kgm<sup>2</sup>  
Duty cycle : Cont.(S1)  
Insulation class : F  
Service factor : 1.15  
Temperature rise : 80 K  
Design : B

Rev.	Changes Summary		Performed	Checked	Date
Performed by				Page	Revision
Checked by				4 / 4	
Date					



EUNC 3/8"-16 WEG WPR-7309

Color Munsell N 1 matte black											
Painting plan 207N											
Mounting B34D											
							HYBRISUSER			00	
ECM	LOC	SUMMARY OF MODIFICATIONS					EXECUTED	CHECKED	RELEASED	DATE	VER
EXECUTED	HYBRISUSER		THREE PH. MOTOR ROLLED STEEL JM NEMA PREM. EFF.					PREVIEW			
CHECKED			FRAME 143/5JM IP21 ODP								
RELEASED											
REL. DATE		WMO	Jaragua do Sul	Product Engineering	SHEET	1 / 1					

WEG's property. Forbidden reproduction without previous authorization.

Dimensions in inches

XME	A3
-----	----