

DATA SHEET

Three Phase Induction Motor - Squirrel Cage



Customer :

Product line : W22 IEEE 841 NEMA Premium Efficiency Three-Phase Product code : 13416636

Frame	: 404/5T	Locked rotor time	: 23s (cold) 13s (hot)
Output	: 100 HP (75 kW)	Temperature rise	: 80 K
Poles	: 4	Duty cycle	: Cont.(S1)
Frequency	: 60 Hz	Ambient temperature	: -20°C to +40°C
Rated voltage	: 575 V	Altitude	: 1000 m.a.s.l.
Rated current	: 92.8 A	Protection degree	: IP56
L. R. Amperes	: 575 A	Cooling method	: IC411 - TEFC
LRC	: 6.2x(Code G)	Mounting	: F-1
No load current	: 25.6 A	Rotation ¹	: Both (CW and CCW)
Rated speed	: 1775 rpm	Noise level ²	: 68.0 dB(A)
Slip	: 1.39 %	Starting method	: Direct On Line
Rated torque	: 40.9 kgfm	Approx. weight ³	: 560 kg
Locked rotor torque	: 240 %		
Breakdown torque	: 220 %		
Insulation class	: F		
Service factor	: 1.25		
Moment of inertia (J)	: 1.26 kgm ²		
Design	: B		

Output	50%	75%	100%	Foundation loads	
Efficiency (%)	95.0	95.0	95.4	Max. traction	: 606 kgf
Power Factor	0.77	0.84	0.85	Max. compression	: 1166 kgf

Losses at normative operating points (speed;torque), in percentage of rated output power

P1 (0,9;1,0)	P2 (0,5;1,0)	P3 (0,25;1,0)	P4 (0,9;0,5)	P5 (0,5;0,5)	P6 (0,5;0,25)	P7 (0,25;0,25)
4.6	3.8	3.7	2.0	1.4	0.8	0.5

	Drive end	Non drive end
Bearing type	: NU-316 C3	: 6314 C3
Sealing	: Inpro/Seal	: Inpro/Seal
Lubrication interval	: 7000 h	: 12000 h
Lubricant amount	: 34 g	: 27 g
Lubricant type	: Mobil Polyrex EM	

Notes

This revision replaces and cancel the previous one, which must be eliminated.

- (1) Looking the motor from the shaft end.
- (2) Measured at 1m and with tolerance of +3dB(A).
- (3) Approximate weight subject to changes after manufacturing process.
- (4) At 100% of full load.

These are average values based on tests with sinusoidal power supply, subject to the tolerances stipulated in NEMA MG-1.

Rev.	Changes Summary	Performed	Checked	Date
Performed by				
Checked by				
Date	23/10/2024		Page 1 / 2	Revision

LOAD PERFORMANCE CURVE

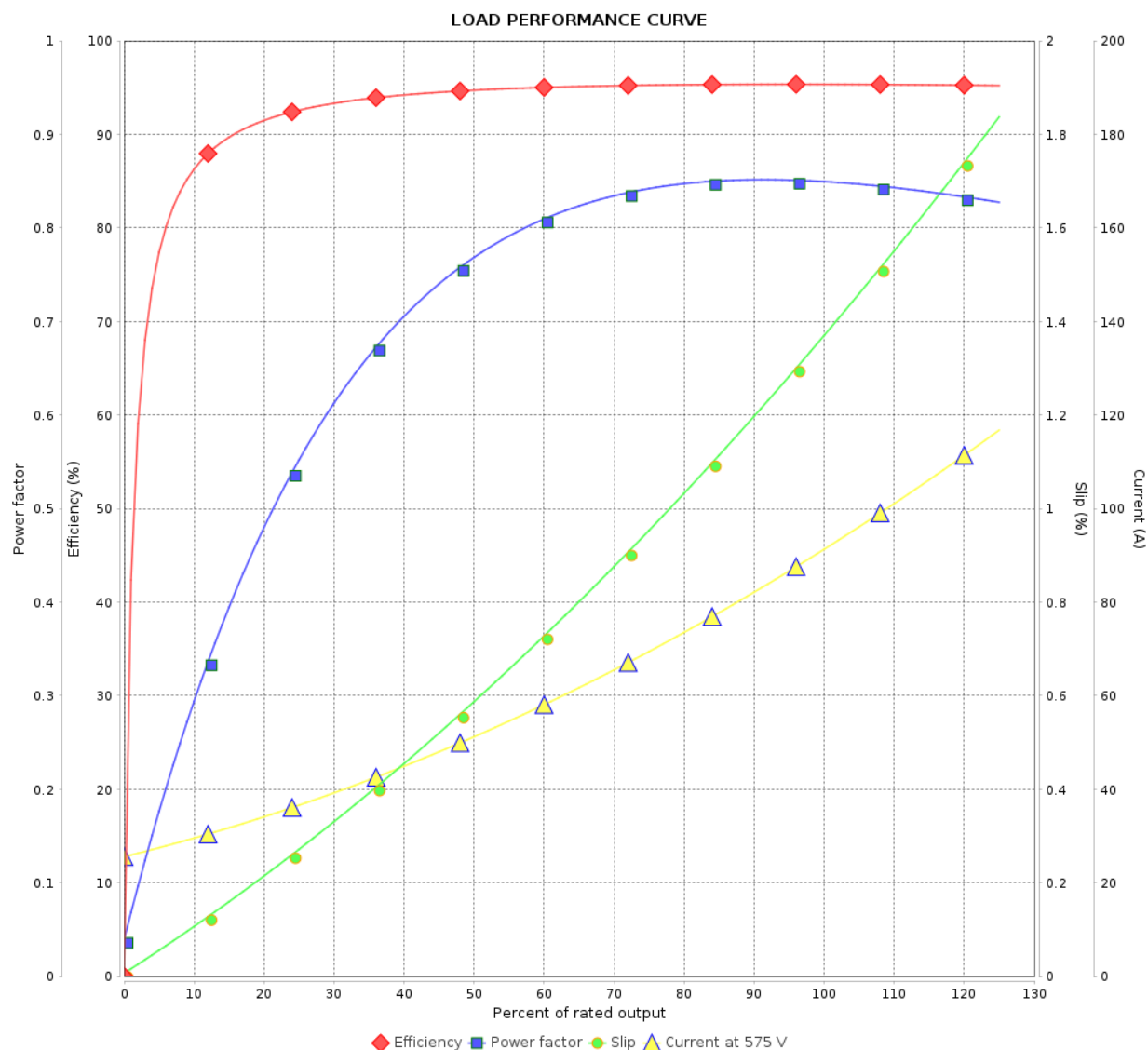
Three Phase Induction Motor - Squirrel Cage



Customer :

Product line : W22 IEEE 841 NEMA Premium
Efficiency Three-Phase

Product code : 13416636

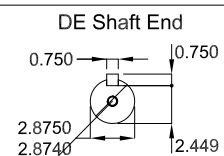
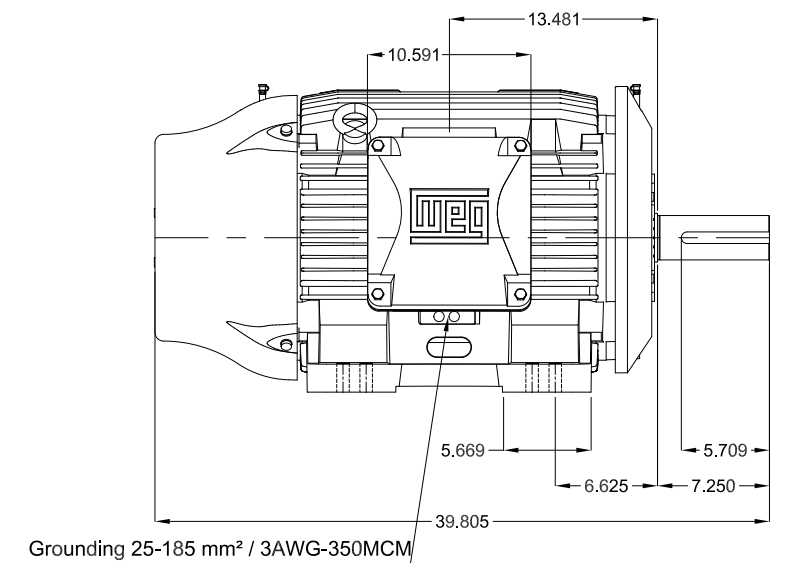
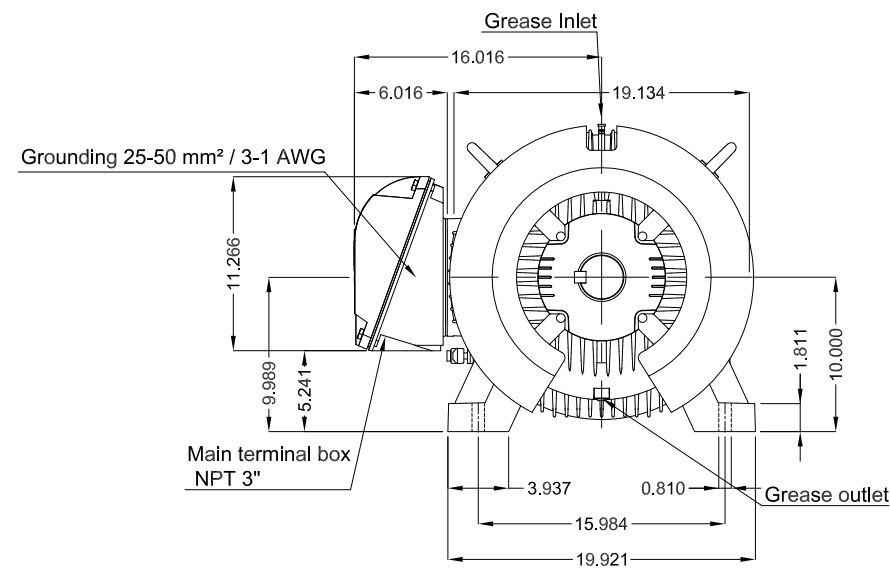
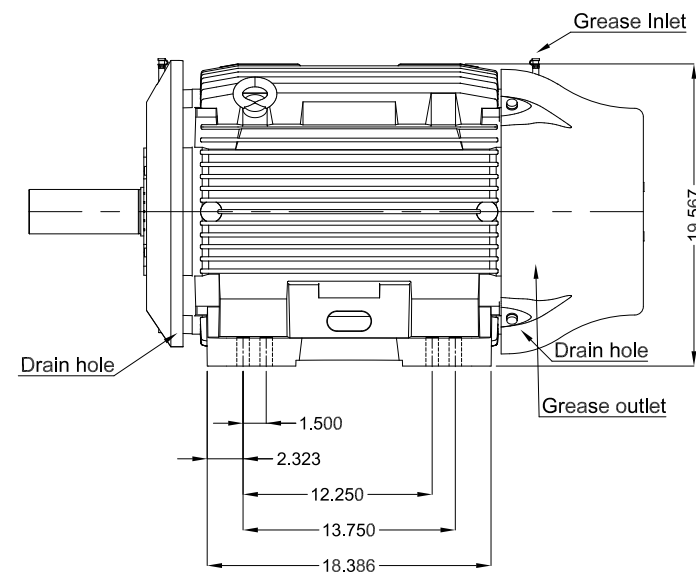


Performance : 575 V 60 Hz 4P

Rated current : 92.8 A
LRC : 6.2
Rated torque : 40.9 kgfm
Locked rotor torque : 240 %
Breakdown torque : 220 %
Rated speed : 1775 rpm

Moment of inertia (J) : 1.26 kgm²
Duty cycle : Cont.(S1)
Insulation class : F
Service factor : 1.25
Temperature rise : 80 K
Design : B

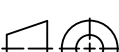

Rev.	Changes Summary		Performed	Checked	Date
Performed by				Page	Revision
Checked by				2 / 2	
Date					



DUNC 3/4"-10 WEG WPR-7339

100 HP 04 Poles 60 Hz

Dimensions in inches

						HYBRISUSER			00
ECM	LOC	SUMMARY OF MODIFICATIONS				EXECUTED	CHECKED	RELEASED	DATE VER
EXECUTED	HYBRISUSER		THREE PH. MOTOR IEEE 841 W22 NEMA PREM. EFF. FRAME 404/5T IP56 TEFC			PREVIEW WDD 00			
CHECKED									
RELEASED									
REL. DATE									