

DATA SHEET

Three Phase Induction Motor - Squirrel Cage



Customer :

Product line : W22 IEEE 841 NEMA Premium Efficiency Three-Phase Product code : 11943494

Frame	: 364/5TS	Locked rotor time	: 18s (cold) 10s (hot)
Output	: 75 HP (55 kW)	Temperature rise	: 80 K
Poles	: 2	Duty cycle	: Cont.(S1)
Frequency	: 60 Hz	Ambient temperature	: -20°C to +40°C
Rated voltage	: 575 V	Altitude	: 1000 m.a.s.l.
Rated current	: 65.5 A	Protection degree	: IP55
L. R. Amperes	: 432 A	Cooling method	: IC411 - TEFC
LRC	: 6.6x(Code G)	Mounting	: F-1
No load current	: 15.2 A	Rotation ¹	: Both (CW and CCW)
Rated speed	: 3550 rpm	Noise level ²	: 79.0 dB(A)
Slip	: 1.39 %	Starting method	: Direct On Line
Rated torque	: 15.3 kgfm	Approx. weight ³	: 401 kg
Locked rotor torque	: 220 %		
Breakdown torque	: 270 %		
Insulation class	: F		
Service factor	: 1.25		
Moment of inertia (J)	: 0.5023 kgm ²		
Design	: B		

Output	50%	75%	100%	Foundation loads	
Efficiency (%)	92.4	93.6	93.6	Max. traction	: 264 kgf
Power Factor	0.83	0.88	0.90	Max. compression	: 665 kgf

Losses at normative operating points (speed;torque), in percentage of rated output power

P1 (0,9;1,0)	P2 (0,5;1,0)	P3 (0,25;1,0)	P4 (0,9;0,5)	P5 (0,5;0,5)	P6 (0,5;0,25)	P7 (0,25;0,25)
6.4	4.9	4.7	3.1	1.8	1.0	0.6

		<u>Drive end</u>	<u>Non drive end</u>
Bearing type	:	6314 C3	6314 C3
Sealing	:	Taconite Labyrinth	Taconite Labyrinth
Lubrication interval	:	4000 h	4000 h
Lubricant amount	:	27 g	27 g
Lubricant type	:	Mobil Polyrex EM	

Notes

This revision replaces and cancel the previous one, which must be eliminated.

- (1) Looking the motor from the shaft end.
- (2) Measured at 1m and with tolerance of +3dB(A).
- (3) Approximate weight subject to changes after manufacturing process.
- (4) At 100% of full load.

These are average values based on tests with sinusoidal power supply, subject to the tolerances stipulated in NEMA MG-1.

Rev.	Changes Summary	Performed	Checked	Date
Performed by		Page Revision 1 / 2		
Checked by				
Date	23/10/2024			

LOAD PERFORMANCE CURVE

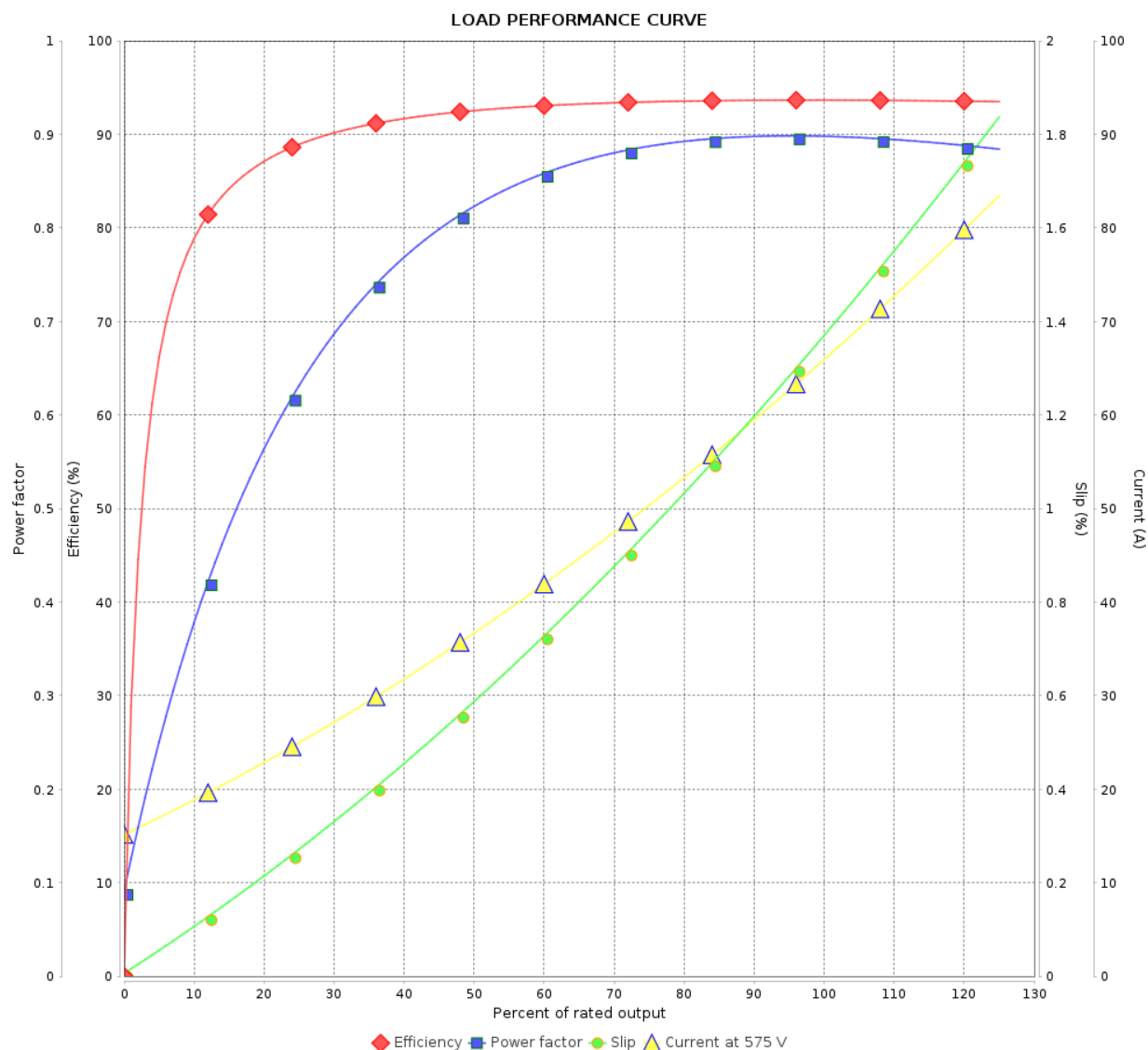
Three Phase Induction Motor - Squirrel Cage



Customer :

Product line : W22 IEEE 841 NEMA Premium
Efficiency Three-Phase

Product code : 11943494

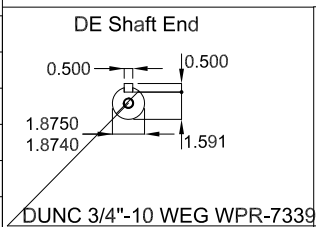
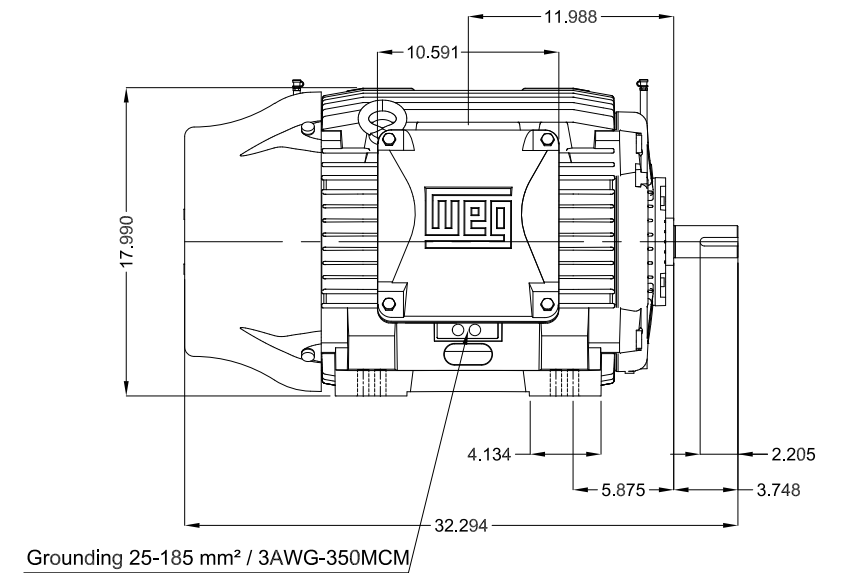
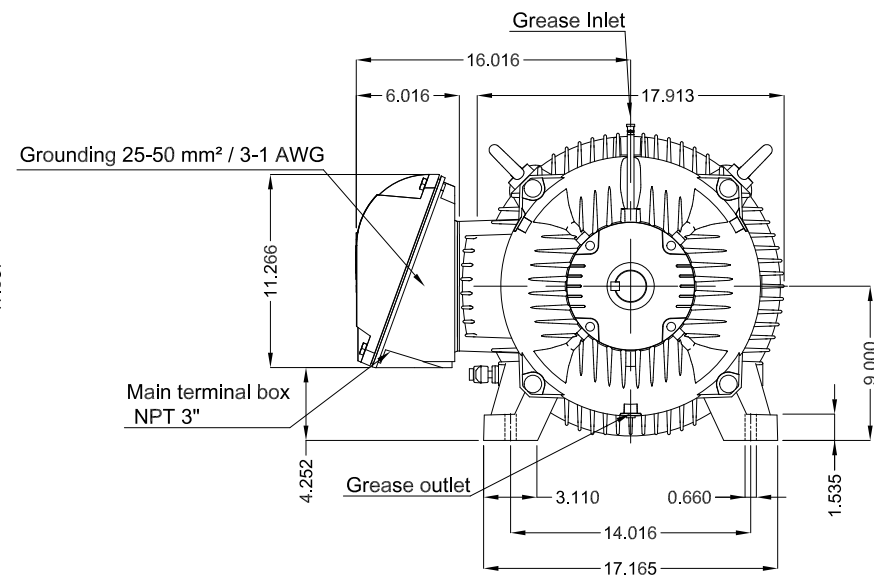
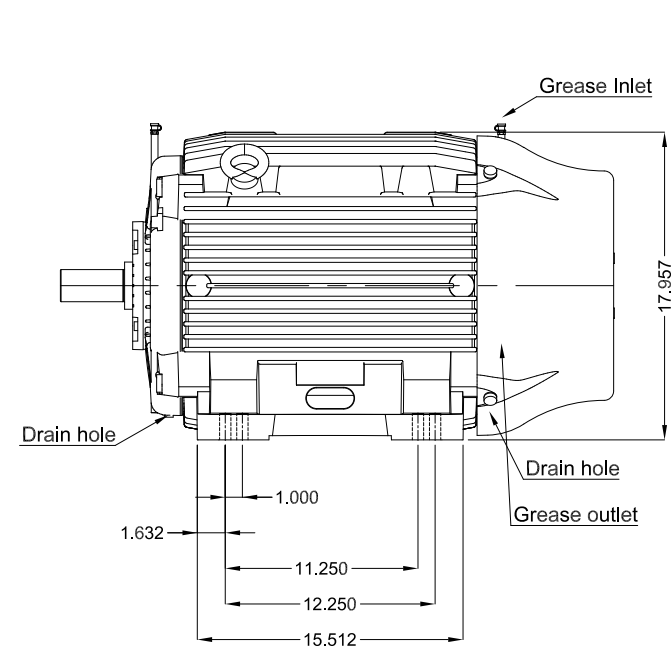




Performance : 575 V 60 Hz 2P

Rated current : 65.5 A
LRC : 6.6
Rated torque : 15.3 kgfm
Locked rotor torque : 220 %
Breakdown torque : 270 %
Rated speed : 3550 rpm

Moment of inertia (J) : 0.5023 kgm²
Duty cycle : Cont.(S1)
Insulation class : F
Service factor : 1.25
Temperature rise : 80 K
Design : B

Rev.	Changes Summary		Performed	Checked	Date
Performed by				Page	Revision
Checked by				2 / 2	
Date					



75 HP 02 Poles 60 Hz										A
				HYBRISUSER					00	
ECM		LOC		SUMMARY OF MODIFICATIONS			EXECUTED		CHECKED	
							RELEASED		DATE	
EXECUTED		HYBRISUSER		 THREE PH. MOTOR IEEE 841 W22 NEMA PREM. EFF. FRAME 364/5TS IP55 TEFC			PREVIEW WDD 00			
CHECKED										
RELEASED										
REL. DATE										
							SHEET		/	