

DATA SHEET

Three Phase Induction Motor - Squirrel Cage



Customer :

Product line : W22 IEEE 841 NEMA Premium Efficiency Three-Phase Product code : 11943385

Frame	: 364/5TC	Locked rotor time	: 27s (cold) 15s (hot)
Output	: 60 HP (45 kW)	Temperature rise	: 80 K
Poles	: 4	Duty cycle	: Cont.(S1)
Frequency	: 60 Hz	Ambient temperature	: -20°C to +40°C
Rated voltage	: 575 V	Altitude	: 1000 m.a.s.l.
Rated current	: 57.3 A	Protection degree	: IP55
L. R. Amperes	: 355 A	Cooling method	: IC411 - TEFC
LRC	: 6.2x(Code G)	Mounting	: F-1
No load current	: 22.4 A	Rotation ¹	: Both (CW and CCW)
Rated speed	: 1780 rpm	Noise level ²	: 67.0 dB(A)
Slip	: 1.11 %	Starting method	: Direct On Line
Rated torque	: 24.5 kgfm	Approx. weight ³	: 428 kg
Locked rotor torque	: 220 %		
Breakdown torque	: 240 %		
Insulation class	: F		
Service factor	: 1.25		
Moment of inertia (J)	: 0.9448 kgm ²		
Design	: B		

Output	50%	75%	100%	Foundation loads	
Efficiency (%)	94.1	94.5	95.0	Max. traction	: 445 kgf
Power Factor	0.71	0.80	0.83	Max. compression	: 873 kgf

Losses at normative operating points (speed;torque), in percentage of rated output power

P1 (0,9;1,0)	P2 (0,5;1,0)	P3 (0,25;1,0)	P4 (0,9;0,5)	P5 (0,5;0,5)	P6 (0,5;0,25)	P7 (0,25;0,25)
5.1	4.1	3.8	2.6	1.7	1.2	0.8

		<u>Drive end</u>	<u>Non drive end</u>
Bearing type	:	6314 C3	6314 C3
Sealing	:	Taconite Labyrinth	Taconite Labyrinth
Lubrication interval	:	12000 h	12000 h
Lubricant amount	:	27 g	27 g
Lubricant type	:	Mobil Polyrex EM	

Notes

This revision replaces and cancel the previous one, which must be eliminated.

- (1) Looking the motor from the shaft end.
- (2) Measured at 1m and with tolerance of +3dB(A).
- (3) Approximate weight subject to changes after manufacturing process.
- (4) At 100% of full load.

These are average values based on tests with sinusoidal power supply, subject to the tolerances stipulated in NEMA MG-1.

Rev.	Changes Summary	Performed	Checked	Date
Performed by		Page 1 / 2 Revision		
Checked by				
Date	22/10/2024			

LOAD PERFORMANCE CURVE

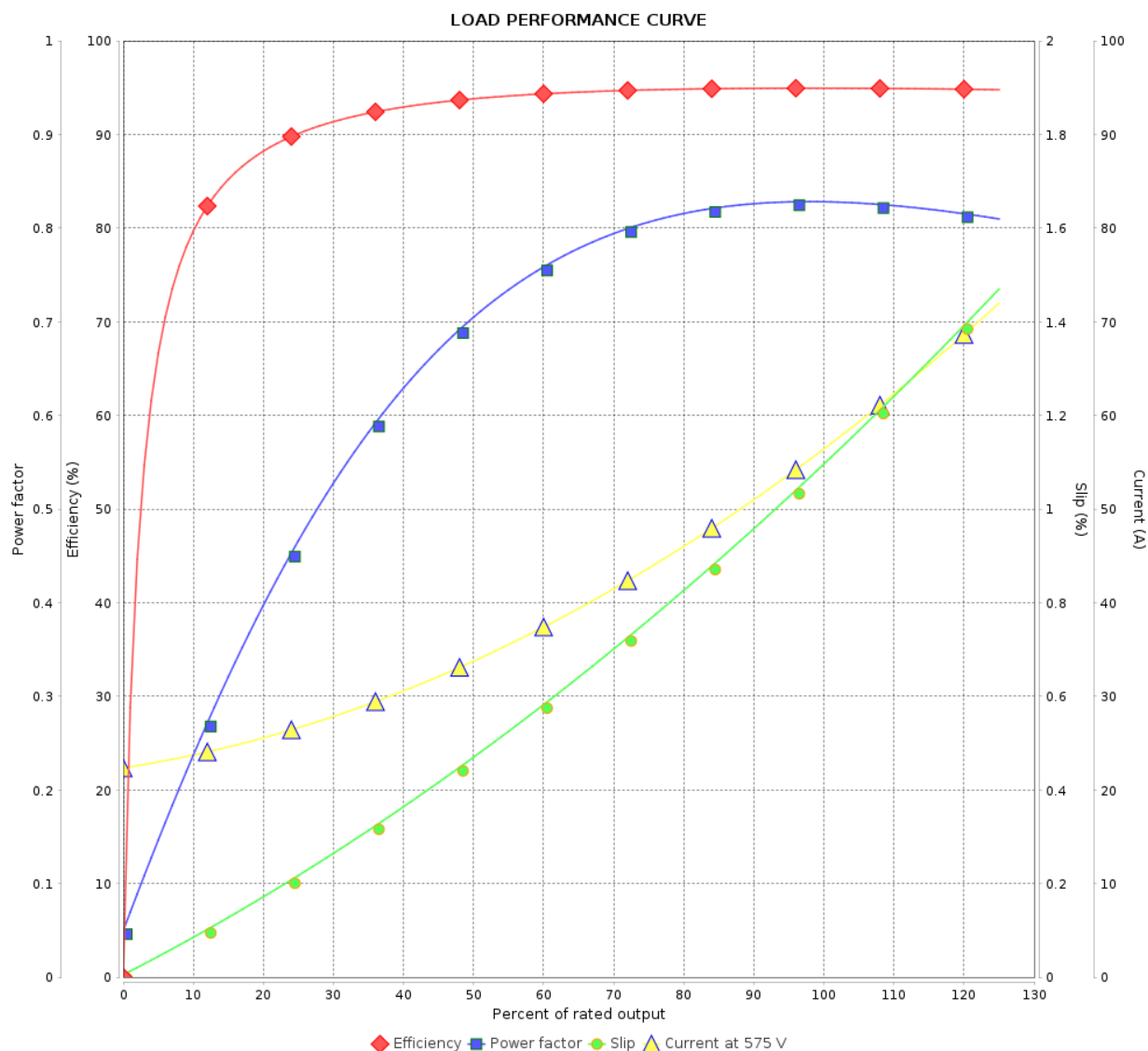
Three Phase Induction Motor - Squirrel Cage



Customer :

Product line : W22 IEEE 841 NEMA Premium
Efficiency Three-Phase

Product code : 11943385

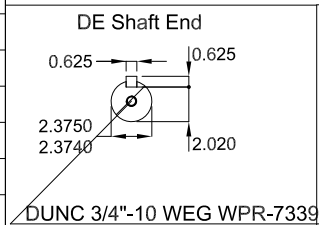
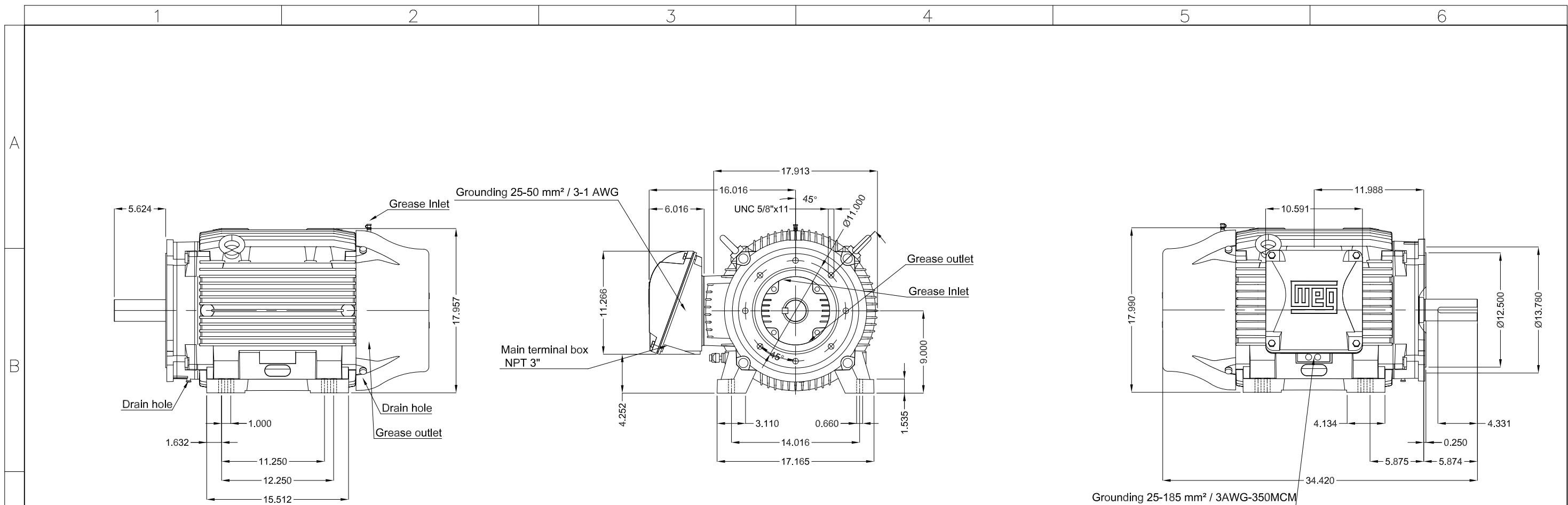




Performance : 575 V 60 Hz 4P

Rated current : 57.3 A
LRC : 6.2
Rated torque : 24.5 kgfm
Locked rotor torque : 220 %
Breakdown torque : 240 %
Rated speed : 1780 rpm

Moment of inertia (J) : 0.9448 kgm²
Duty cycle : Cont.(S1)
Insulation class : F
Service factor : 1.25
Temperature rise : 80 K
Design : B

Rev.	Changes Summary		Performed	Checked	Date
Performed by				Page	Revision
Checked by				2 / 2	
Date					



60 HP 04 Poles 60 Hz											A
					HYBRISUSER						00
ECM		LOC	SUMMARY OF MODIFICATIONS				EXECUTED	CHECKED	RELEASED	DATE	VER
EXECUTED		HYBRISUSER		THREE PH. MOTOR IEEE 841 W22 NEMA PREM. EFF. FRAME 364/5TC IP55 TEFC				PREVIEW WDD 00			
CHECKED											
RELEASED											
REL. DATE											