

DATA SHEET

Three Phase Induction Motor - Squirrel Cage



Customer :

Product line : W22 IEEE 841 NEMA Premium Efficiency Three-Phase Product code : 11943381

Frame	: 364/5TS	Locked rotor time	: 25s (cold) 14s (hot)
Output	: 60 HP (45 kW)	Temperature rise	: 80 K
Poles	: 2	Duty cycle	: Cont.(S1)
Frequency	: 60 Hz	Ambient temperature	: -20°C to +40°C
Rated voltage	: 575 V	Altitude	: 1000 m.a.s.l.
Rated current	: 53.6 A	Protection degree	: IP55
L. R. Amperes	: 343 A	Cooling method	: IC411 - TEFC
LRC	: 6.4x(Code G)	Mounting	: F-1
No load current	: 12.0 A	Rotation ¹	: Both (CW and CCW)
Rated speed	: 3550 rpm	Noise level ²	: 79.0 dB(A)
Slip	: 1.39 %	Starting method	: Direct On Line
Rated torque	: 12.3 kgfm	Approx. weight ³	: 391 kg
Locked rotor torque	: 190 %		
Breakdown torque	: 250 %		
Insulation class	: F		
Service factor	: 1.25		
Moment of inertia (J)	: 0.4485 kgm ²		
Design	: B		

Output	50%	75%	100%	Foundation loads	
Efficiency (%)	91.7	93.0	93.6	Max. traction	: 148 kgf
Power Factor	0.81	0.88	0.90	Max. compression	: 540 kgf

Losses at normative operating points (speed;torque), in percentage of rated output power

P1 (0,9;1,0)	P2 (0,5;1,0)	P3 (0,25;1,0)	P4 (0,9;0,5)	P5 (0,5;0,5)	P6 (0,5;0,25)	P7 (0,25;0,25)
7.4	5.8	5.1	3.7	2.3	1.4	0.9

		<u>Drive end</u>	<u>Non drive end</u>
Bearing type	:	6314 C3	6314 C3
Sealing	:	Taconite Labyrinth	Taconite Labyrinth
Lubrication interval	:	4000 h	4000 h
Lubricant amount	:	27 g	27 g
Lubricant type	:	Mobil Polyrex EM	

Notes

This revision replaces and cancel the previous one, which must be eliminated.

- (1) Looking the motor from the shaft end.
- (2) Measured at 1m and with tolerance of +3dB(A).
- (3) Approximate weight subject to changes after manufacturing process.
- (4) At 100% of full load.

These are average values based on tests with sinusoidal power supply, subject to the tolerances stipulated in NEMA MG-1.

Rev.	Changes Summary	Performed	Checked	Date
Performed by		Page Revision 1 / 2		
Checked by				
Date	22/10/2024			

LOAD PERFORMANCE CURVE

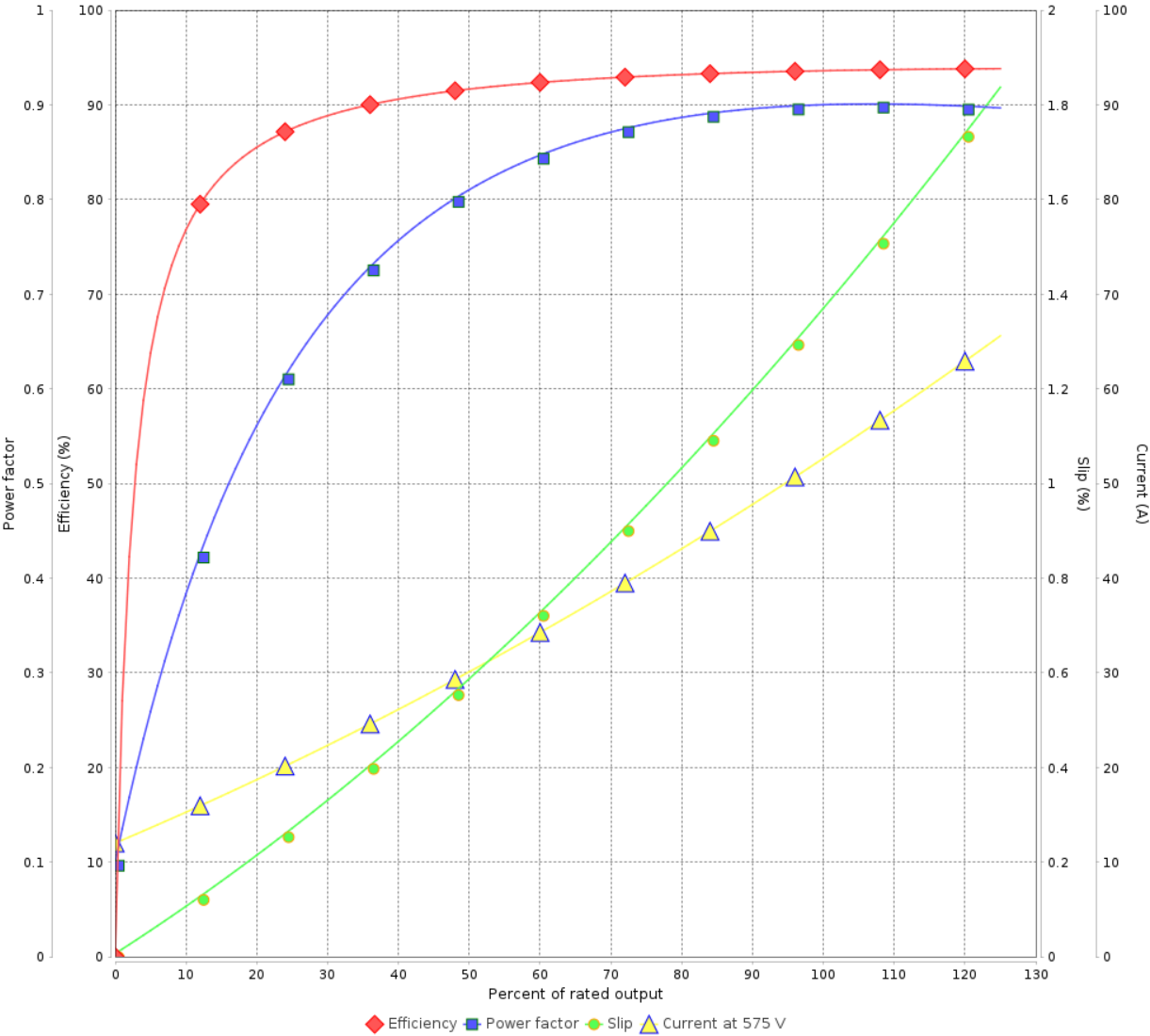
Three Phase Induction Motor - Squirrel Cage



Customer :

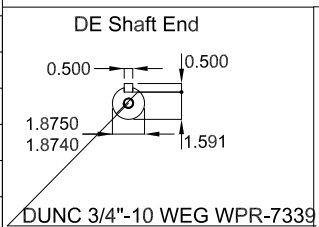
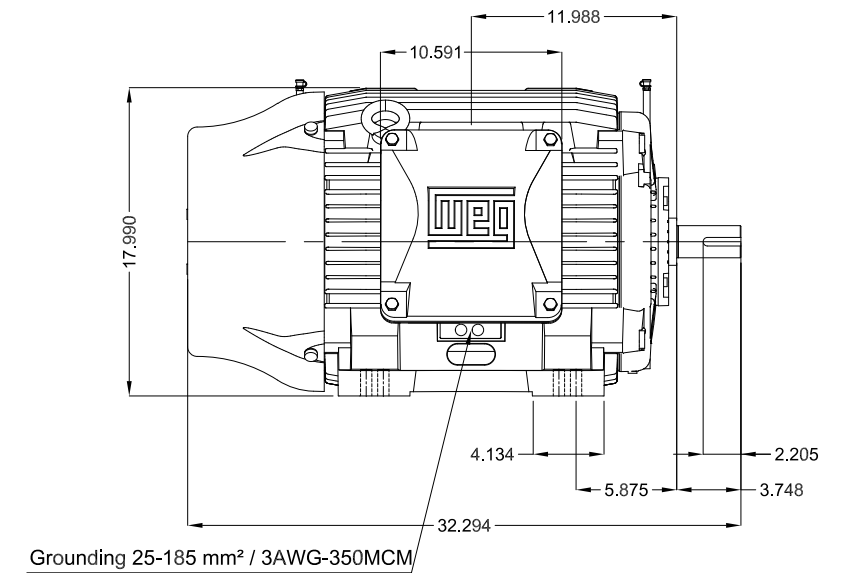
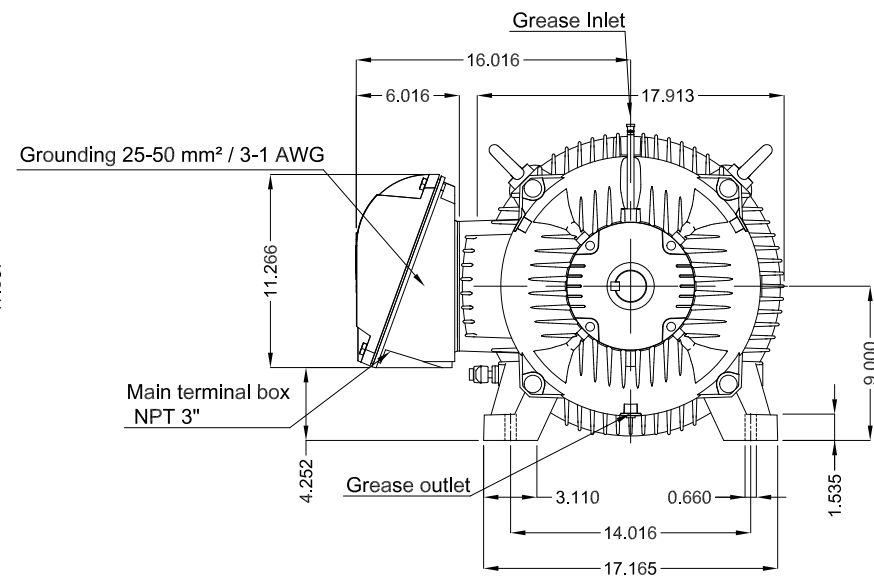
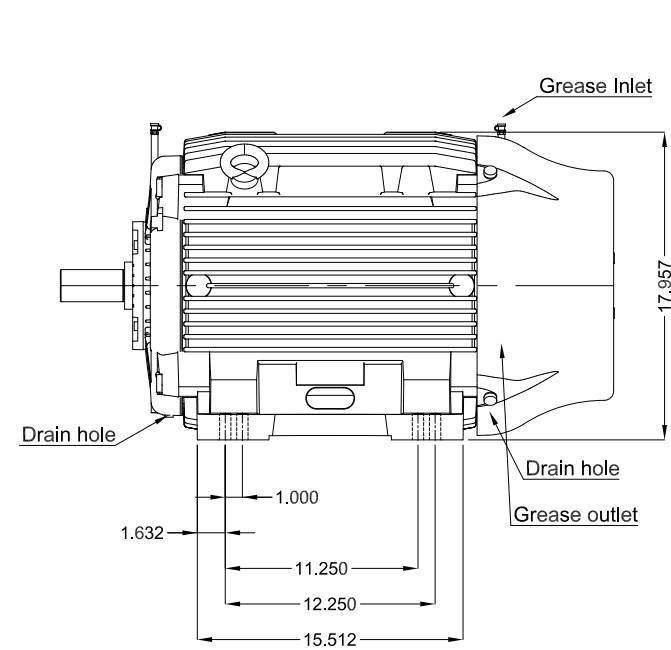
Product line : W22 IEEE 841 NEMA Premium Efficiency Three-Phase Product code : 11943381



LOAD PERFORMANCE CURVE



Performance : 575 V 60 Hz 2P			
Rated current	: 53.6 A	Moment of inertia (J)	: 0.4485 kgm ²
LRC	: 6.4	Duty cycle	: Cont.(S1)
Rated torque	: 12.3 kgfm	Insulation class	: F
Locked rotor torque	: 190 %	Service factor	: 1.25
Breakdown torque	: 250 %	Temperature rise	: 80 K
Rated speed	: 3550 rpm	Design	: B

Rev.	Changes Summary		Performed	Checked	Date
Performed by				Page 2 / 2	Revision
Checked by					
Date	22/10/2024				



60 HP 02 Poles 60 Hz										A
				HYBRISUSER					00	
ECM		LOC		SUMMARY OF MODIFICATIONS			EXECUTED		CHECKED	
							RELEASED		DATE	
EXECUTED		HYBRISUSER		 THREE PH. MOTOR IEEE 841 W22 NEMA PREM. EFF. FRAME 364/5TS IP55 TEFC			PREVIEW WDD 00			
CHECKED										
RELEASED										
REL. DATE										
							SHEET		/	