

# DATA SHEET



## Three Phase Induction Motor - Squirrel Cage

Customer :						
Product line		: W22 Brake Motor NEMA Premium Efficiency Three-Phase		Product code :		19198380
Frame	:	213/5T	Locked rotor time	:	102s (cold) 57s (hot)	
Output	:	5 HP (3.7 kW)	Temperature rise	:	80 K	
Frequency	:	60 Hz	Duty cycle	:	Cont.(S1)	
Rated voltage	:	575 V	Ambient temperature	:	-20°C to +40°C	
Poles	:	6	Altitude	:	1000 m.a.s.l.	
Rated current	:	5.46 A	Protection degree	:	IP55	
	:	6.8x(Code J)	Cooling method	:	IC411 - TEFC	
Rated speed	:	1170 rpm	Mounting	:	F-1	
Rated torque	:	3.10 kgfm	Rotation <sup>1</sup>	:	Both (CW and CCW)	
Insulation class	:	F	Noise level <sup>2</sup>	:	55.0 dB(A)	
Service factor	:	1.25	Starting method	:	Direct On Line	
Moment of inertia (J)	:	0.0620 kgm <sup>2</sup>	Approx. weight <sup>3</sup>	:	88.6 kg	
Design	:	B				
Output	50%	75%	100%	Foundation loads		
Efficiency (%)	88.5	89.5	89.5	Max. traction	: 105 kgf	
Power Factor	0.58	0.70	0.76	Max. compression	: 193 kgf	
Losses at normative operating points (speed;torque), in percentage of rated output power						
P1 (0,9;1,0)	P2 (0,5;1,0)	P3 (0,25;1,0)	P4 (0,9;0,5)	P5 (0,5;0,5)	P6 (0,5;0,25)	P7 (0,25;0,25)
11.1	9.1	8.8	5.8	4.0	2.9	2.1
		<u>Drive end</u>		<u>Non drive end</u>		
Bearing type	:	6308 ZZ		6207 ZZ		
Sealing	:	V'Ring		Lip Seal		
Lubrication interval	:	-		-		
Lubricant amount	:	-		-		
Lubricant type	:		00088			
Notes						
This revision replaces and cancel the previous one, which must be eliminated. (1) Looking the motor from the shaft end. (2) Measured at 1m and with tolerance of +3dB(A). (3) Approximate weight subject to changes after manufacturing process. (4) At 100% of full load.				These are average values based on tests with sinusoidal power supply, subject to the tolerances stipulated in NEMA MG-1.		
Rev.	Changes Summary			Performed	Checked	Date
Performed by						
Checked by					Page	Revision
Date	26/04/2026				1 / 3	

# DATA SHEET

## Three Phase Induction Motor - Squirrel Cage



Customer : \_\_\_\_\_

### Brake information

Voltage: 525-575 V  
Brake Torque: 8.15 kgfm

Rev.	Changes Summary	Performed	Checked	Date
Performed by				
Checked by			Page	Revision
Date	26/04/2026		2 / 3	

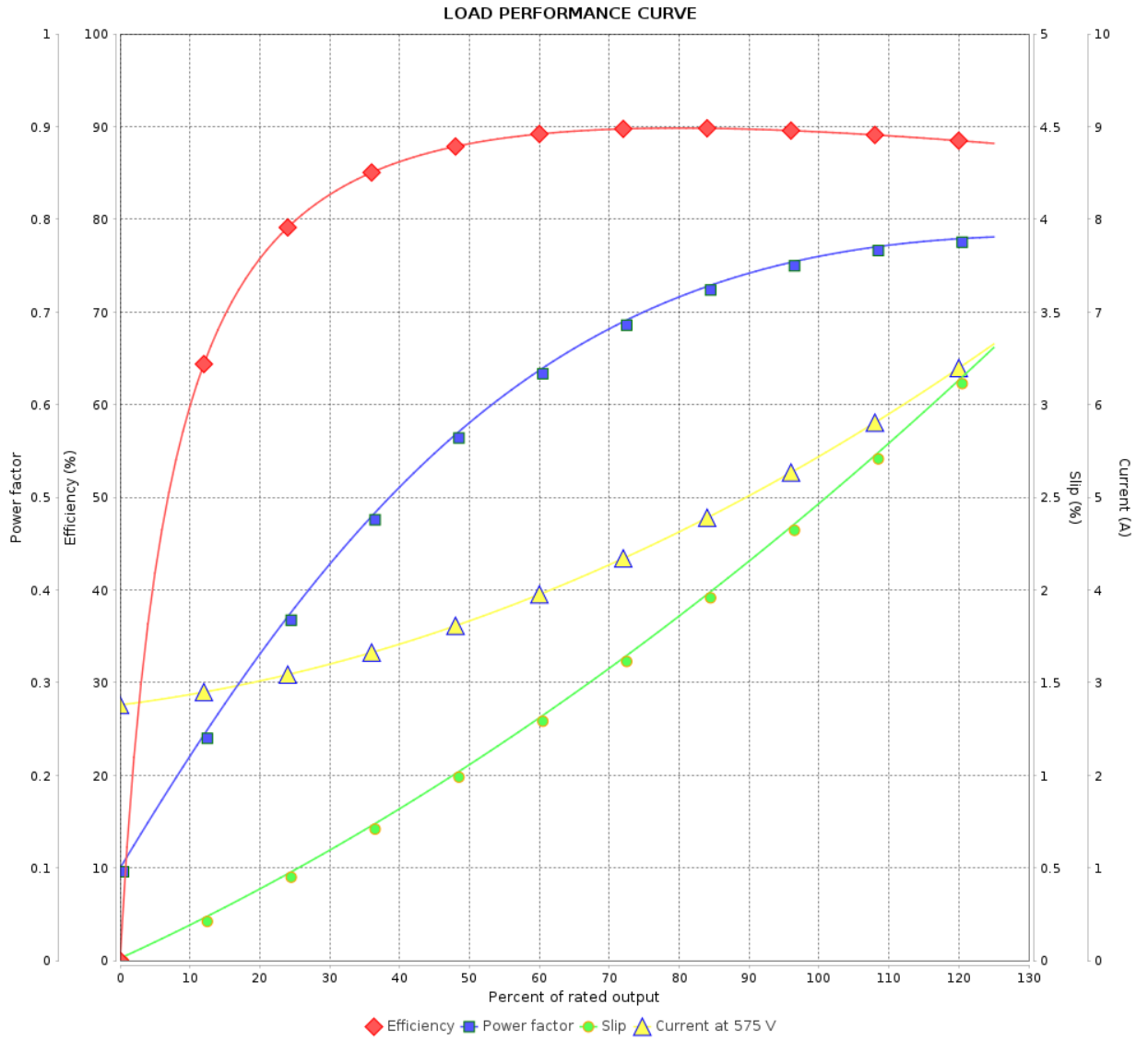
# LOAD PERFORMANCE CURVE

## Three Phase Induction Motor - Squirrel Cage

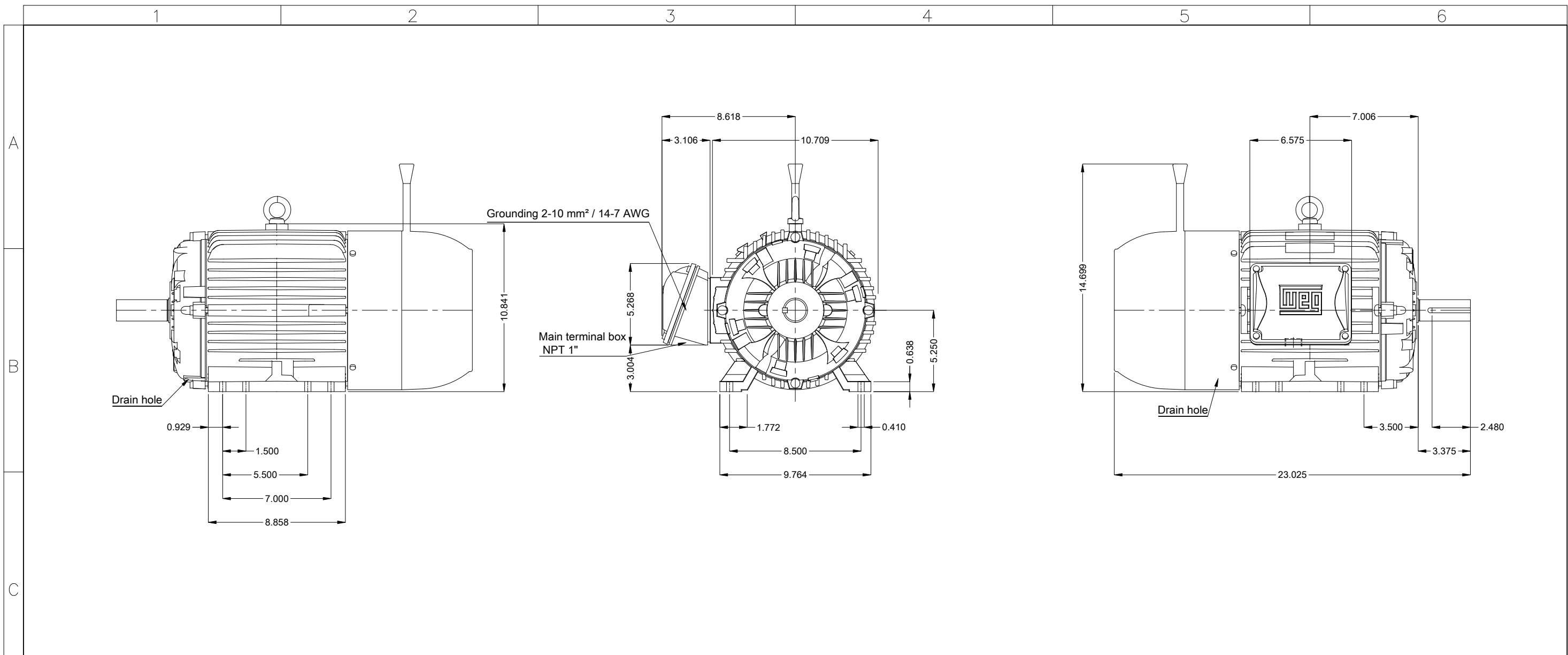


Customer :

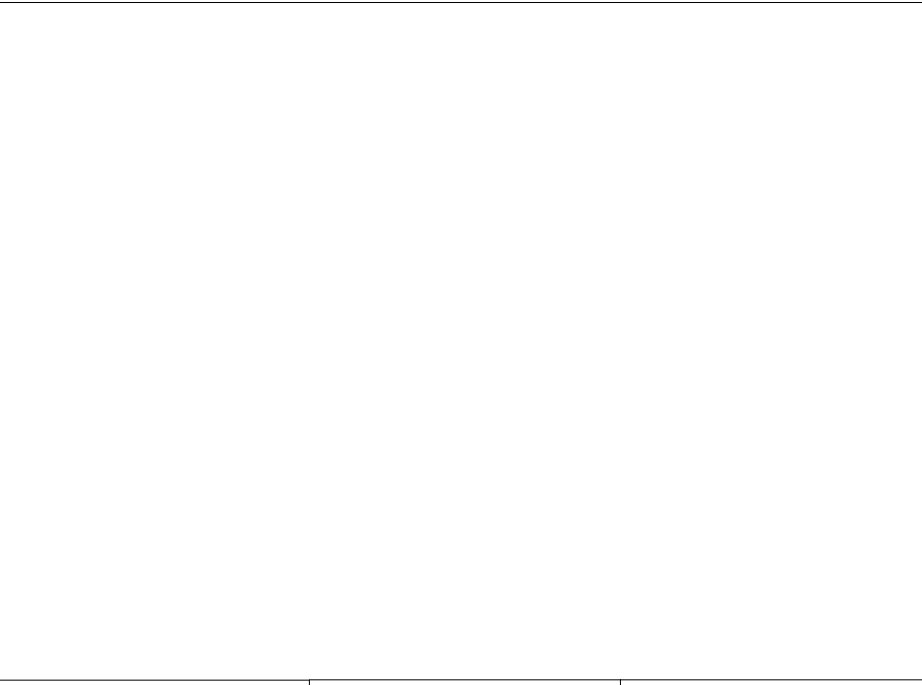
Product line : W22 Brake Motor NEMA Premium Efficiency Three-Phase      Product code : 19198380



Rev.	Changes Summary	Performed	Checked	Date
Performed by			Page 3 / 3	Revision
Checked by				
Date	26/04/2026			



Break size 16 (80 Nm)  
 Brake voltage 525-575 V  
 Color RAL 5009  
 Painting plan 207A  
 Mounting NEMA F-1  
 Mounting B3R(D)



5 HP 06 Poles 60 Hz		A	
		Scale 2 : 13	
		HYBRISUSER	
ECM	LOC	SUMMARY OF MODIFICATIONS	EXECUTED CHECKED RELEASED DATE VER
EXECUTED	HYBRISUSER	THREE PH. MOTOR W22 BRAKE MOTOR NEMA PREM. EFF.	00
CHECKED		FRAME 213/5T IP55 TEFC	
RELEASED			
REL. DATE			

Break size 16 (80 Nm)
Brake voltage 525-575 V
Color RAL 5009
Painting plan 207A
Mounting NEMA F-1
Mounting B3R(D)



		HYBRISUSER		00	
ECM	LOC	SUMMARY OF MODIFICATIONS	EXECUTED	CHECKED	RELEASED DATE VER
EXECUTED	HYBRISUSER	THREE PH. MOTOR W22 BRAKE MOTOR NEMA PREM. EFF.	00		
CHECKED		FRAME 213/5T IP55 TEFC			
RELEASED					
REL. DATE					