

# DATA SHEET

## Three Phase Induction Motor - Squirrel Cage



Customer :

Product line : W22 IEEE 841 NEMA Premium Efficiency Three-Phase Product code : 11594952

Frame	: 284/6TC	Locked rotor time	: 28s (cold) 16s (hot)
Output	: 20 HP (15 kW)	Temperature rise	: 80 K
Poles	: 6	Duty cycle	: Cont.(S1)
Frequency	: 60 Hz	Ambient temperature	: -20°C to +40°C
Rated voltage	: 575 V	Altitude	: 1000 m.a.s.l.
Rated current	: 19.4 A	Protection degree	: IP56
L. R. Amperes	: 114 A	Cooling method	: IC411 - TEFC
LRC	: 5.9x(Code G)	Mounting	: F-1
No load current	: 6.64 A	Rotation <sup>1</sup>	: Both (CW and CCW)
Rated speed	: 1175 rpm	Noise level <sup>2</sup>	: 59.0 dB(A)
Slip	: 2.08 %	Starting method	: Direct On Line
Rated torque	: 12.4 kgfm	Approx. weight <sup>3</sup>	: 206 kg
Locked rotor torque	: 220 %		
Breakdown torque	: 250 %		
Insulation class	: F		
Service factor	: 1.25		
Moment of inertia (J)	: 0.3861 kgm <sup>2</sup>		
Design	: B		

Output	50%	75%	100%	Foundation loads	
Efficiency (%)	91.0	91.7	91.7	Max. traction	: 339 kgf
Power Factor	0.70	0.80	0.85	Max. compression	: 545 kgf

Losses at normative operating points (speed;torque), in percentage of rated output power

P1 (0,9;1,0)	P2 (0,5;1,0)	P3 (0,25;1,0)	P4 (0,9;0,5)	P5 (0,5;0,5)	P6 (0,5;0,25)	P7 (0,25;0,25)
9.9	8.5	7.9	5.2	3.7	2.6	1.8

	Drive end	Non drive end
Bearing type	: 6311 C3	6211 C3
Sealing	: Inpro/Seal	Inpro/Seal
Lubrication interval	: 20000 h	20000 h
Lubricant amount	: 18 g	11 g
Lubricant type	Mobil Polyrex EM	

Notes

This revision replaces and cancel the previous one, which must be eliminated.

- (1) Looking the motor from the shaft end.
- (2) Measured at 1m and with tolerance of +3dB(A).
- (3) Approximate weight subject to changes after manufacturing process.
- (4) At 100% of full load.

These are average values based on tests with sinusoidal power supply, subject to the tolerances stipulated in NEMA MG-1.

Rev.	Changes Summary	Performed	Checked	Date
Performed by				
Checked by				
Date	22/10/2024		Page 1 / 2	Revision

# LOAD PERFORMANCE CURVE

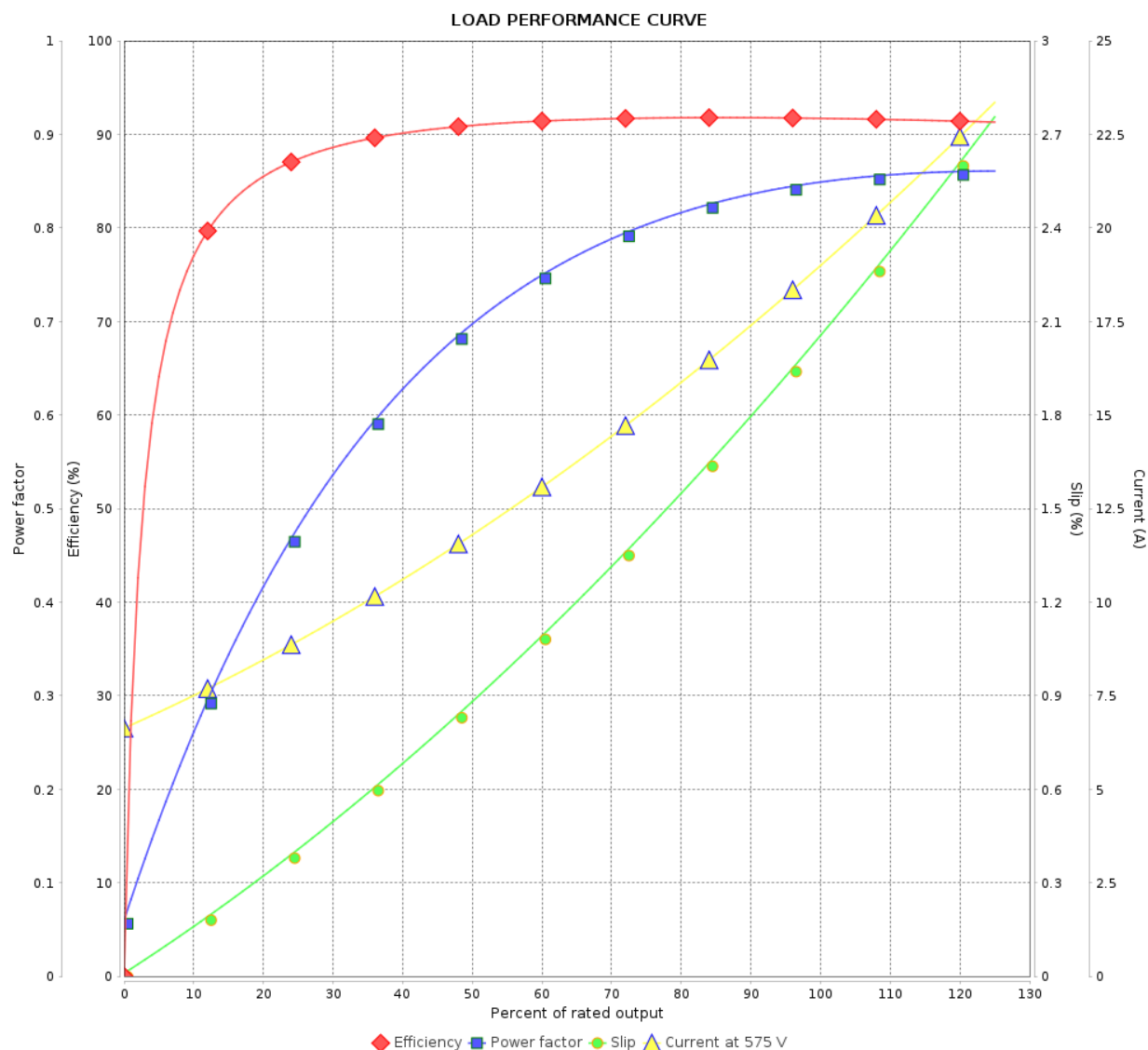
## Three Phase Induction Motor - Squirrel Cage



Customer :

Product line : W22 IEEE 841 NEMA Premium  
Efficiency Three-Phase

Product code : 11594952

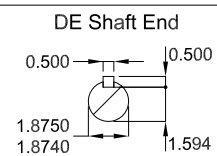
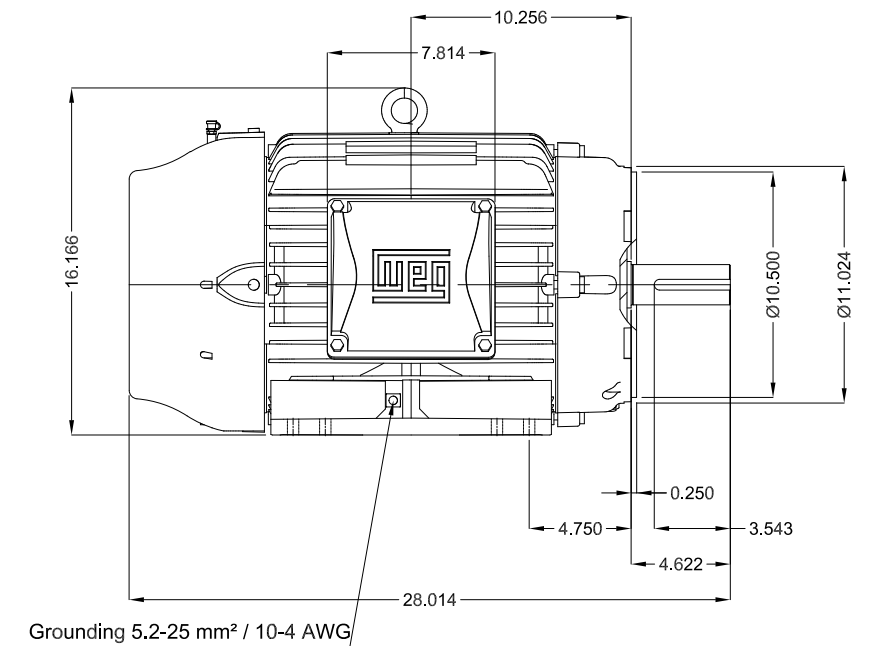
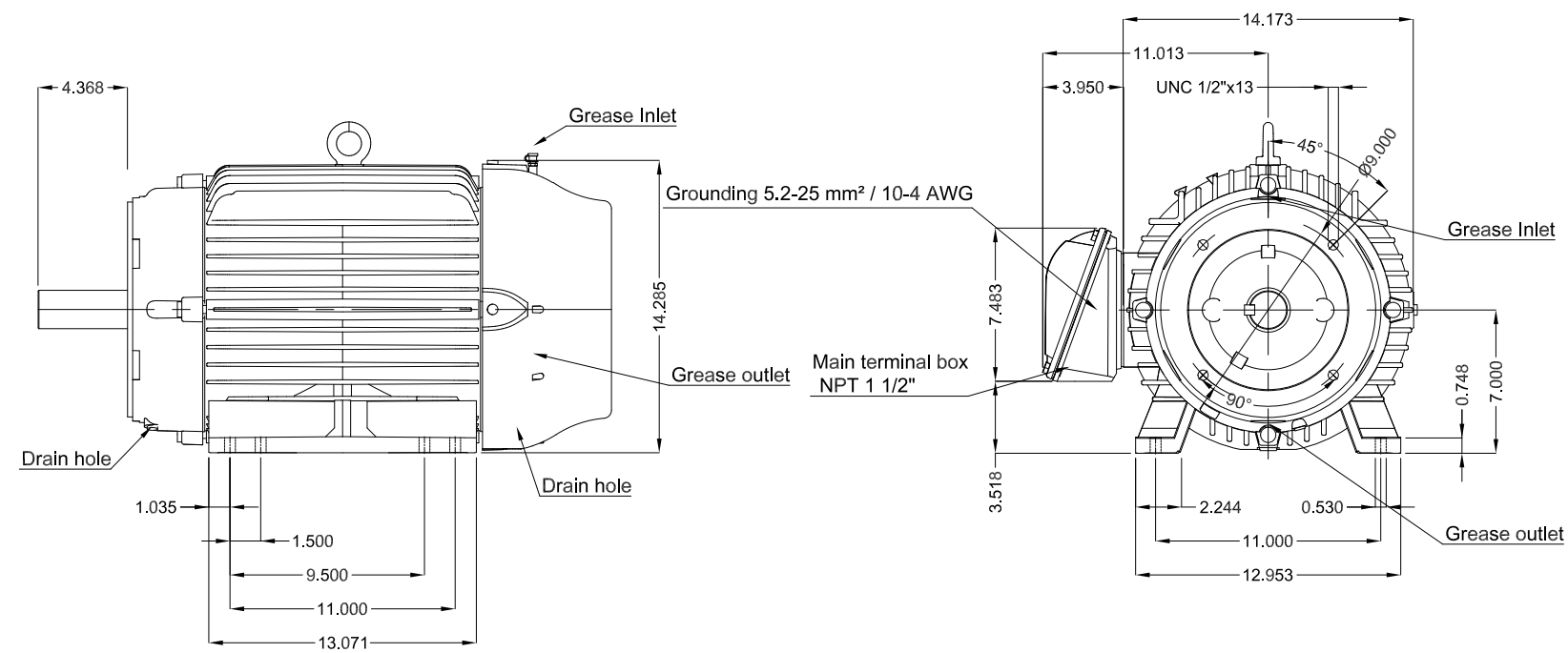


Performance : 575 V 60 Hz 6P



Rated current : 19.4 A  
LRC : 5.9  
Rated torque : 12.4 kgfm  
Locked rotor torque : 220 %  
Breakdown torque : 250 %  
Rated speed : 1175 rpm

Moment of inertia (J) : 0.3861 kgm<sup>2</sup>  
Duty cycle : Cont.(S1)  
Insulation class : F  
Service factor : 1.25  
Temperature rise : 80 K  
Design : B

Rev.	Changes Summary		Performed	Checked	Date
Performed by				Page 2 / 2	Revision
Checked by					
Date	22/10/2024				



Without vertical jackscrews
Grease outlet according to IEEE841
Color RAL 5009
Painting plan 222E
Mounting B34R(D)

20 HP   06 Poles   60 Hz										A			
				HYBRISUSER					00				
ECM		LOC		SUMMARY OF MODIFICATIONS			EXECUTED		CHECKED		RELEASED	DATE	VER
EXECUTED		HYBRISUSER				THREE PH. MOTOR IEEE 841 W22 NEMA PREM. EFF. FRAME 284/6TC IP56 TEFC			PREVIEW WDD   00				
CHECKED													
RELEASED													
REL. DATE													
						SHEET		/					