

DATA SHEET

Three Phase Induction Motor - Squirrel Cage



Customer :

Product line : W22 IEEE 841 NEMA Premium Efficiency Three-Phase Product code : 12373795

Frame : 182/4T	Cooling method : IC411 - TEFC
Insulation class : F	Mounting : F-1
Duty cycle : Cont.(S1)	Rotation ¹ : Both (CW and CCW)
Ambient temperature : -20°C to +40°C	Starting method : Direct On Line
Altitude : 1000 m.a.s.l.	Approx. weight ³ : 44.8 kg
Protection degree : IP56	Moment of inertia (J) : 0.0143 kgm ²
Design : B	

Output [HP]	3	3	3	3
Poles	4	4	4	4
Frequency [Hz]	60	50	50	50
Rated voltage [V]	460	380	400	415
Rated current [A]	3.91	4.78	4.54	4.43
L. R. Amperes [A]	31.7	30.1	32.2	33.7
LRC [A]	8.1x(Code K)	6.3x(Code H)	7.1x(Code J)	7.6x(Code K)
No load current [A]	2.00	2.00	2.10	2.25
Rated speed [RPM]	1760	1445	1450	1455
Slip [%]	2.22	3.67	3.33	3.00
Rated torque [kgfm]	1.24	1.51	1.50	1.50
Locked rotor torque [%]	220	220	220	240
Breakdown torque [%]	330	250	290	320
Service factor	1.25	1.25	1.25	1.25
Temperature rise	80 K	80 K	80 K	80 K
Locked rotor time	41s (cold) 23s (hot)	32s (cold) 18s (hot)	32s (cold) 18s (hot)	32s (cold) 18s (hot)
Noise level ²	56.0 dB(A)	56.0 dB(A)	56.0 dB(A)	56.0 dB(A)
Efficiency (%)	25%			
	50%	87.5	87.5	87.5
	75%	88.5	87.5	87.5
	100%	89.5	87.5	87.5
Power Factor	25%			
	50%	0.61	0.68	0.64
	75%	0.71	0.77	0.75
	100%	0.79	0.80	0.80

Losses at normative operating points (speed;torque), in percentage of rated output power

Losses (%)	P1 (0,9;1,0)	11.0	13.4	13.4	13.4
	P2 (0,5;1,0)	8.9	10.8	10.8	10.8
	P3 (0,25;1,0)	8.8	10.7	10.7	10.7
	P4 (0,9;0,5)	6.1	7.4	7.4	7.4
	P5 (0,5;0,5)	4.0	4.9	4.9	4.9
	P6 (0,5;0,25)	3.0	3.6	3.6	3.6
	P7 (0,25;0,25)	2.1	2.6	2.6	2.6

	<u>Drive end</u>	<u>Non drive end</u>	Foundation loads
Bearing type :	6207 C3	6206 C3	Max. traction : 78 kgf
Sealing :	Inpro/Seal	Inpro/Seal	Max. compression : 122 kgf
Lubrication interval :	20000 h	20000 h	
Lubricant amount :	7 g	5 g	
Lubricant type :	Mobil Polyrex EM		

This revision replaces and cancel the previous one, which must be eliminated.
 (1) Looking the motor from the shaft end.
 (2) Measured at 1m and with tolerance of +3dB(A).
 (3) Approximate weight subject to changes after manufacturing process.

These are average values based on tests with sinusoidal power supply, subject to the tolerances stipulated in NEMA MG-1.

Rev.	Changes Summary	Performed	Checked	Date
Performed by				
Checked by				
Date	22/10/2024		Page 1 / 6	Revision

DATA SHEET

Three Phase Induction Motor - Squirrel Cage



Customer :

Notes

Rev.	Changes Summary		Performed	Checked	Date
Performed by			Page		Revision
Checked by					
Date	22/10/2024				

LOAD PERFORMANCE CURVE

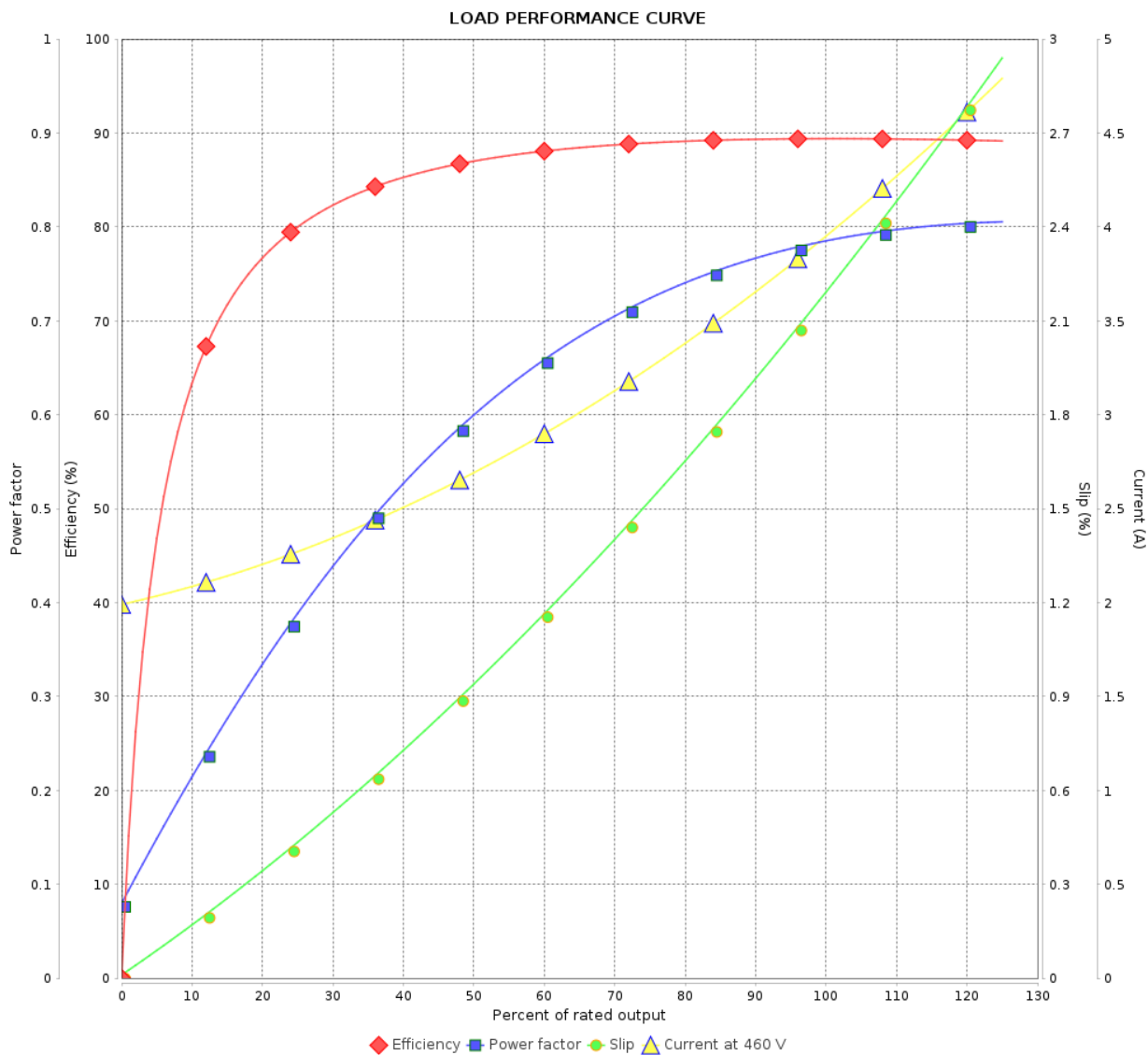
Three Phase Induction Motor - Squirrel Cage



Customer :

Product line : W22 IEEE 841 NEMA Premium
Efficiency Three-Phase

Product code : 12373795



Performance : 460 V 60 Hz 4P

Rated current : 3.91 A
LRC : 8.1
Rated torque : 1.24 kgfm
Locked rotor torque : 220 %
Breakdown torque : 330 %
Rated speed : 1760 rpm

Moment of inertia (J) : 0.0143 kgm²
Duty cycle : Cont.(S1)
Insulation class : F
Service factor : 1.25
Temperature rise : 80 K
Design : B

Rev.	Changes Summary		Performed	Checked	Date
Performed by				Page 3 / 6	Revision
Checked by					
Date	22/10/2024				

LOAD PERFORMANCE CURVE

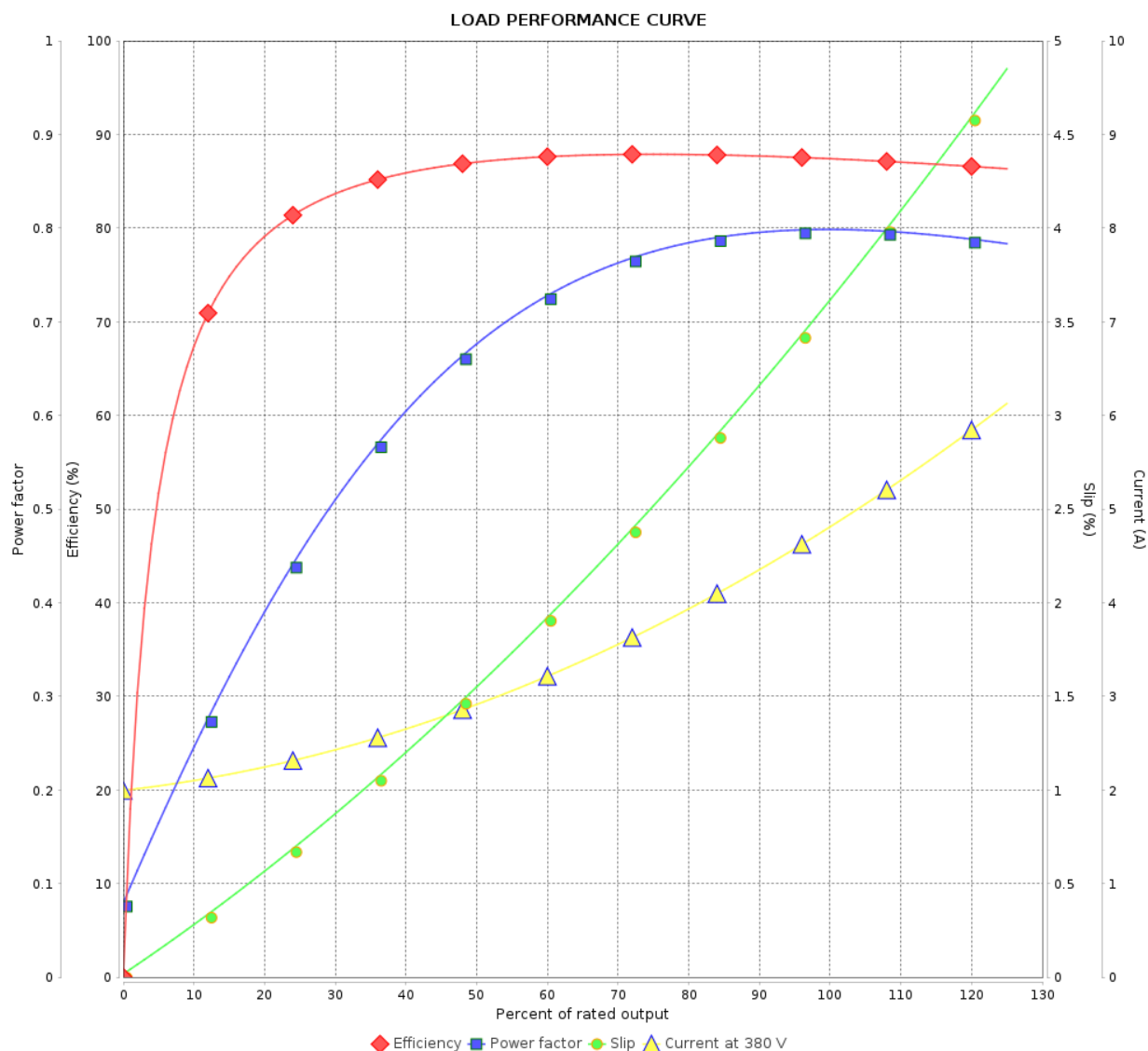
Three Phase Induction Motor - Squirrel Cage



Customer :

Product line : W22 IEEE 841 NEMA Premium
Efficiency Three-Phase

Product code : 12373795



Performance : 380 V 50 Hz 4P IE3

Rated current : 4.78 A
LRC : 6.3
Rated torque : 1.51 kgfm
Locked rotor torque : 220 %
Breakdown torque : 250 %
Rated speed : 1445 rpm

Moment of inertia (J) : 0.0143 kgm²
Duty cycle : Cont.(S1)
Insulation class : F
Service factor : 1.25
Temperature rise : 80 K
Design : B

Rev.	Changes Summary		Performed	Checked	Date
Performed by				Page	Revision
Checked by				4 / 6	
Date					

LOAD PERFORMANCE CURVE

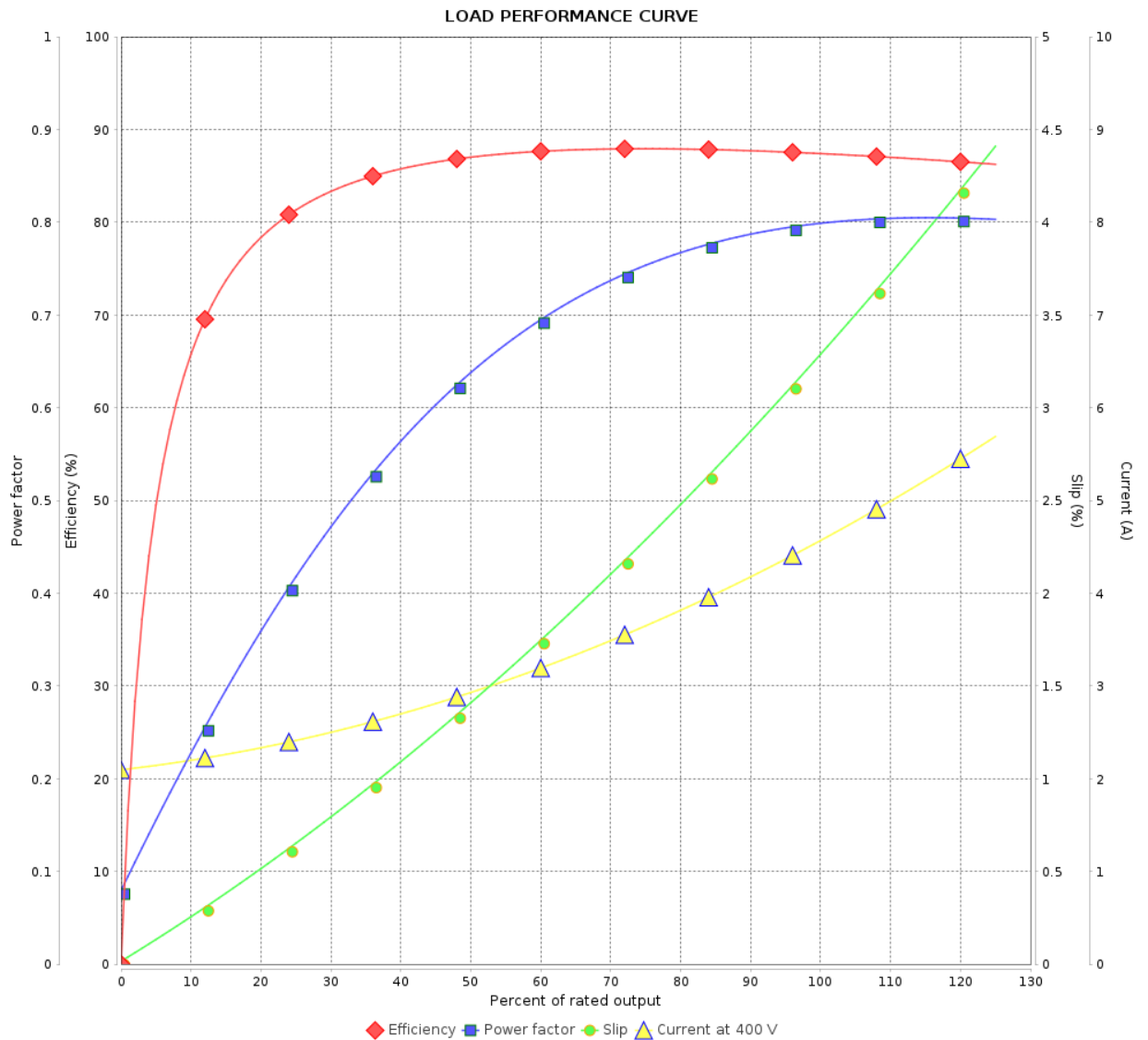
Three Phase Induction Motor - Squirrel Cage



Customer :

Product line : W22 IEEE 841 NEMA Premium
Efficiency Three-Phase

Product code : 12373795



Performance : 400 V 50 Hz 4P IE3

Rated current : 4.54 A
LRC : 7.1
Rated torque : 1.50 kgfm
Locked rotor torque : 220 %
Breakdown torque : 290 %
Rated speed : 1450 rpm

Moment of inertia (J) : 0.0143 kgm²
Duty cycle : Cont.(S1)
Insulation class : F
Service factor : 1.25
Temperature rise : 80 K
Design : B

Rev.	Changes Summary	Performed	Checked	Date
Performed by		Page 5 / 6Revision		
Checked by				
Date	22/10/2024			

LOAD PERFORMANCE CURVE

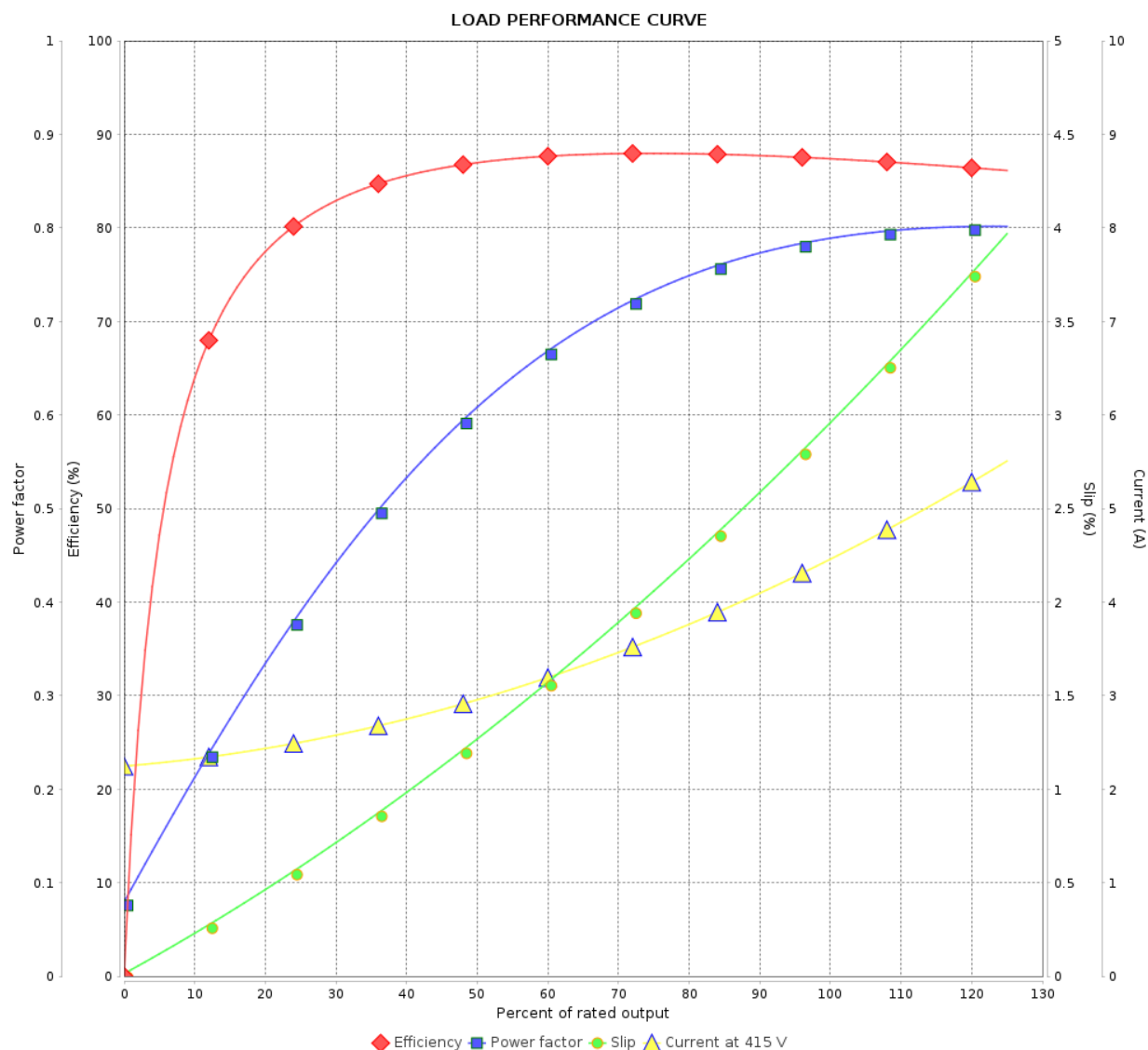
Three Phase Induction Motor - Squirrel Cage



Customer :

Product line : W22 IEEE 841 NEMA Premium
Efficiency Three-Phase

Product code : 12373795

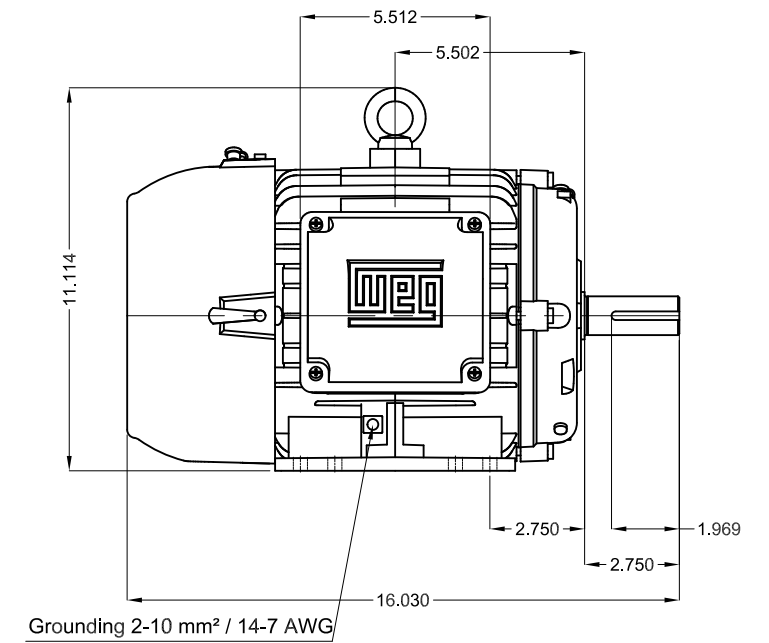
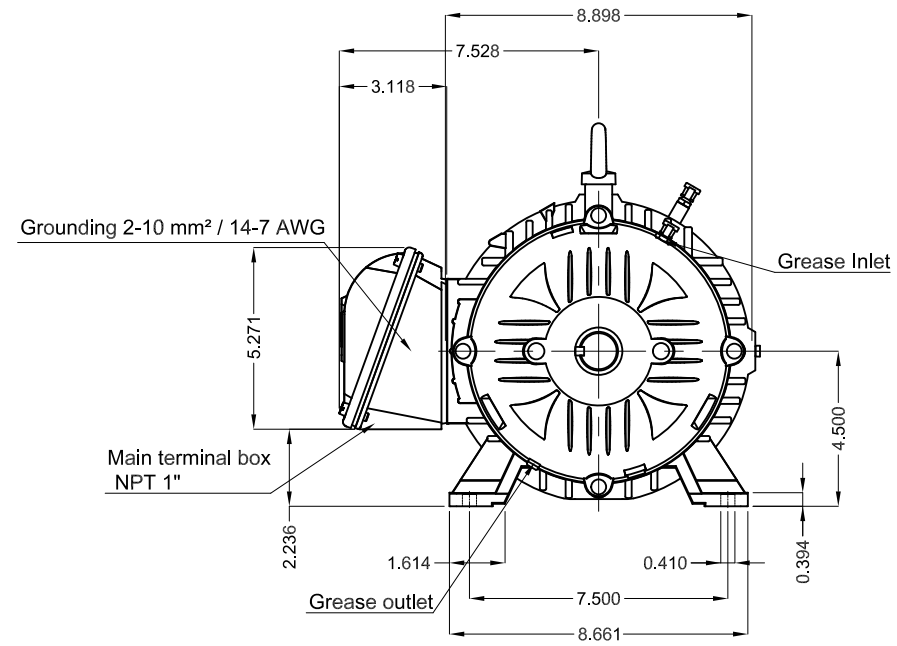
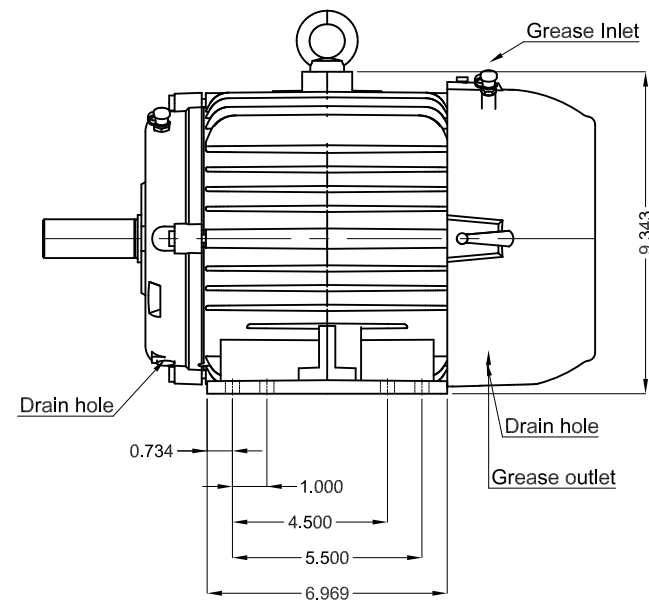


Performance : 415 V 50 Hz 4P IE3

Rated current : 4.43 A
LRC : 7.6
Rated torque : 1.50 kgfm
Locked rotor torque : 240 %
Breakdown torque : 320 %
Rated speed : 1455 rpm

Moment of inertia (J) : 0.0143 kgm²
Duty cycle : Cont.(S1)
Insulation class : F
Service factor : 1.25
Temperature rise : 80 K
Design : B

Rev.	Changes Summary		Performed	Checked	Date
Performed by				Page	Revision
Checked by				6 / 6	
Date					



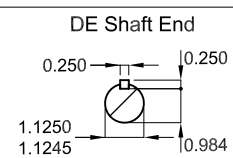
Grease outlet according to IEEE841



Color RAL 5009

Painting plan 202E

Mounting NEMA F-1

Mounting B3R(D)



3 HP 04 Poles 60 Hz										A
						HYBRISUSER				00
ECM	LOC	SUMMARY OF MODIFICATIONS				EXECUTED	CHECKED	RELEASED	DATE	VER
EXECUTED	HYBRISUSER	<div></div> THREE PH. MOTOR IEEE 841 W22 NEMA PREM. EFF. FRAME 182/4T IP56 TEFC				PREVIEW WDD 00				
CHECKED										
RELEASED										
REL. DATE						SHEET /				

