

DATA SHEET

Three Phase Induction Motor - Squirrel Cage



Customer :

Product line : W22 IEEE 841 NEMA Premium Efficiency Three-Phase Product code : 11939316

Frame	: 182/4T	Locked rotor time	: 55s (cold) 31s (hot)
Output	: 2 HP (1.5 kW)	Temperature rise	: 80 K
Poles	: 6	Duty cycle	: Cont.(S1)
Frequency	: 60 Hz	Ambient temperature	: -20°C to +40°C
Rated voltage	: 575 V	Altitude	: 1000 m.a.s.l.
Rated current	: 2.58 A	Protection degree	: IP55
L. R. Amperes	: 19.3 A	Cooling method	: IC411 - TEFC
LRC	: 7.5x(Code L)	Mounting	: F-1
No load current	: 1.52 A	Rotation ¹	: Both (CW and CCW)
Rated speed	: 1170 rpm	Noise level ²	: 52.0 dB(A)
Slip	: 2.50 %	Starting method	: Direct On Line
Rated torque	: 1.24 kgfm	Approx. weight ³	: 50.4 kg
Locked rotor torque	: 300 %		
Breakdown torque	: 350 %		
Insulation class	: F		
Service factor	: 1.25		
Moment of inertia (J)	: 0.0262 kgm ²		
Design	: B		

Output	50%	75%	100%	Foundation loads	
Efficiency (%)	86.5	87.5	88.5	Max. traction	: 65 kgf
Power Factor	0.46	0.58	0.66	Max. compression	: 116 kgf

Losses at normative operating points (speed;torque), in percentage of rated output power

P1 (0,9;1,0)	P2 (0,5;1,0)	P3 (0,25;1,0)	P4 (0,9;0,5)	P5 (0,5;0,5)	P6 (0,5;0,25)	P7 (0,25;0,25)
12.3	9.8	9.2	7.4	5.0	3.9	2.9

		<u>Drive end</u>	<u>Non drive end</u>
Bearing type	:	6207 C3	6206 C3
Sealing	:	Taconite Labyrinth	Taconite Labyrinth
Lubrication interval	:	20000 h	20000 h
Lubricant amount	:	7 g	5 g
Lubricant type	:	Mobil Polyrex EM	

Notes

This revision replaces and cancel the previous one, which must be eliminated.

- (1) Looking the motor from the shaft end.
- (2) Measured at 1m and with tolerance of +3dB(A).
- (3) Approximate weight subject to changes after manufacturing process.
- (4) At 100% of full load.

These are average values based on tests with sinusoidal power supply, subject to the tolerances stipulated in NEMA MG-1.

Rev.	Changes Summary	Performed	Checked	Date
Performed by		Page 1 / 2 Revision		
Checked by				
Date	22/10/2024			

LOAD PERFORMANCE CURVE

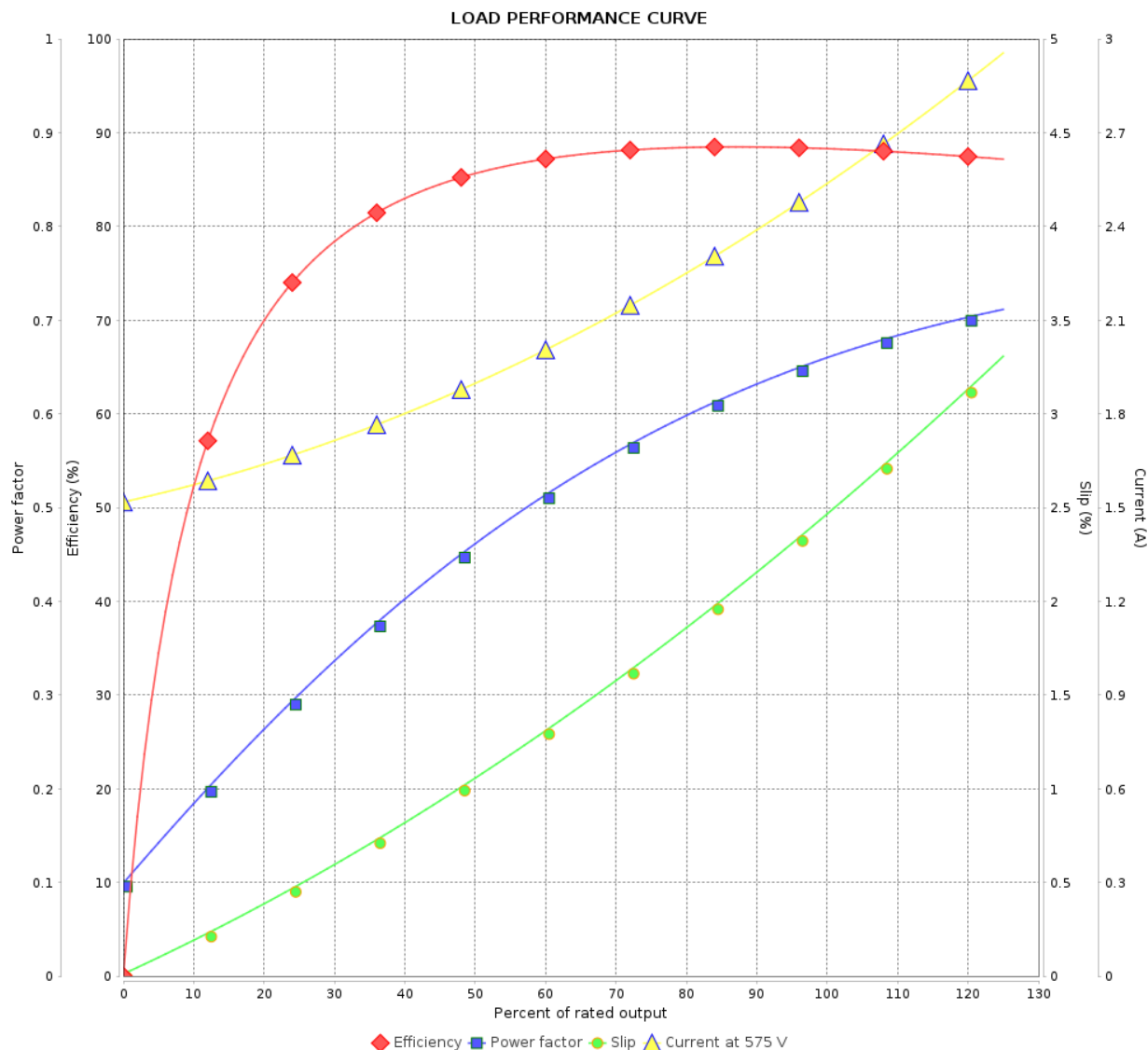
Three Phase Induction Motor - Squirrel Cage



Customer :

Product line : W22 IEEE 841 NEMA Premium
Efficiency Three-Phase

Product code : 11939316

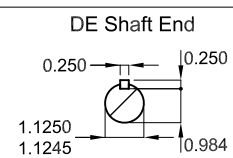
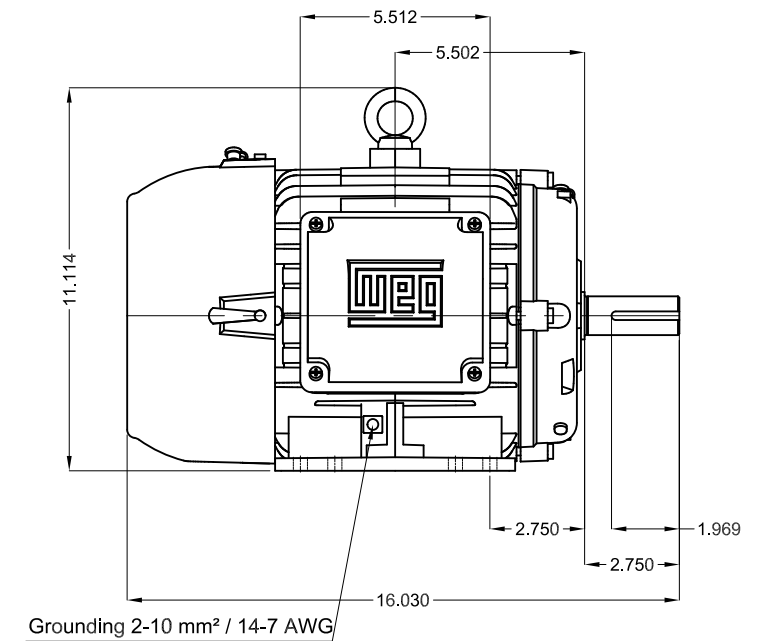
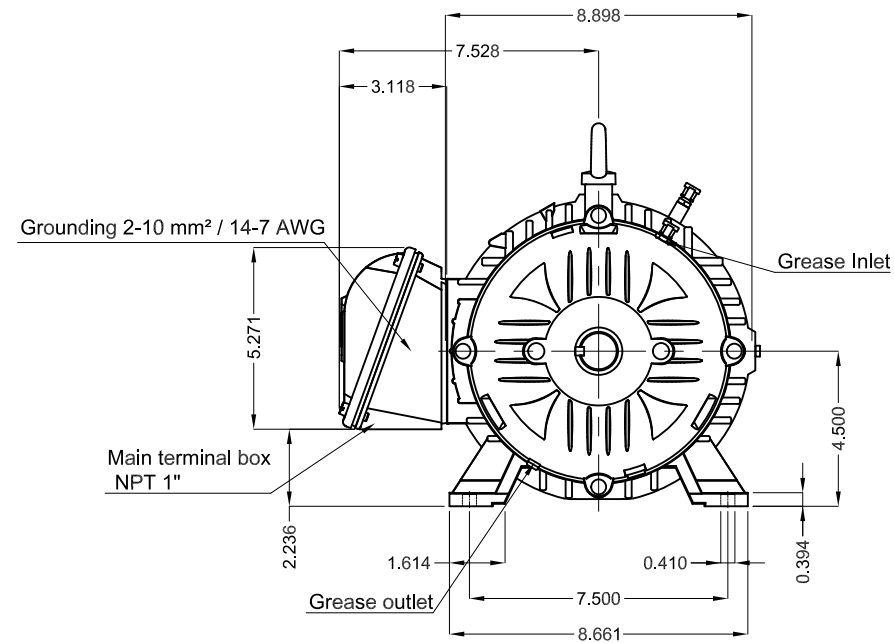
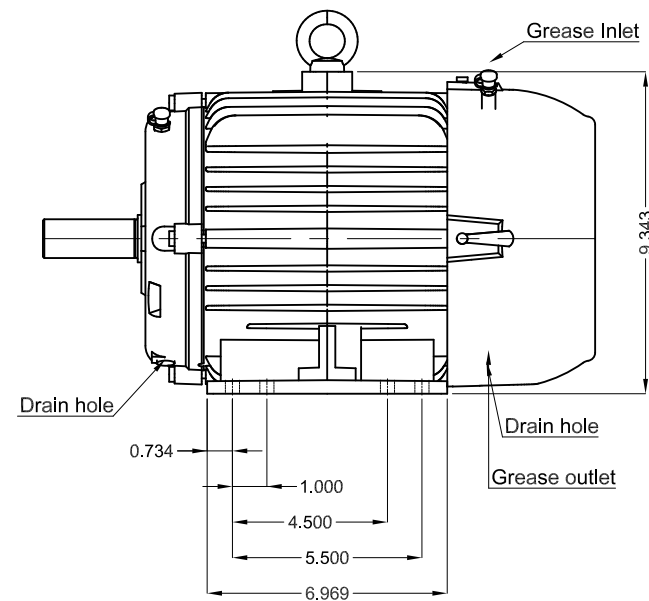




Performance : 575 V 60 Hz 6P

Rated current : 2.58 A
LRC : 7.5
Rated torque : 1.24 kgfm
Locked rotor torque : 300 %
Breakdown torque : 350 %
Rated speed : 1170 rpm

Moment of inertia (J) : 0.0262 kgm²
Duty cycle : Cont.(S1)
Insulation class : F
Service factor : 1.25
Temperature rise : 80 K
Design : B

Rev.	Changes Summary		Performed	Checked	Date
Performed by				Page	Revision
Checked by				2 / 2	
Date					



2 HP 06 Poles 60 Hz										A	
							HYBRISUSER				00
ECM	LOC	SUMMARY OF MODIFICATIONS					EXECUTED	CHECKED	RELEASED	DATE	VER
EXECUTED	HYBRISUSER	<div></div> THREE PH. MOTOR IEEE 841 W22 NEMA PREM. EFF. FRAME 182/4T IP55 TEFC					PREVIEW WDD 00				
CHECKED											
RELEASED											
REL. DATE							SHEET				