

# DATA SHEET

## Three Phase Induction Motor - Squirrel Cage



Customer :

Product line : W22 IEEE 841 NEMA Premium Efficiency Three-Phase Product code : 12373789

Frame	: 182/4T	Locked rotor time	: 28s (cold) 16s (hot)
Output	: 1.5 HP (1.1 kW)	Temperature rise	: 80 K
Poles	: 6	Duty cycle	: Cont.(S1)
Frequency	: 60 Hz	Ambient temperature	: -20°C to +40°C
Rated voltage	: 575 V	Altitude	: 1000 m.a.s.l.
Rated current	: 2.03 A	Protection degree	: IP56
L. R. Amperes	: 15.8 A	Cooling method	: IC411 - TEFC
LRC	: 7.8x(Code M)	Mounting	: F-1
No load current	: 1.30 A	Rotation <sup>1</sup>	: Both (CW and CCW)
Rated speed	: 1170 rpm	Noise level <sup>2</sup>	: 52.0 dB(A)
Slip	: 2.50 %	Starting method	: Direct On Line
Rated torque	: 0.930 kgfm	Approx. weight <sup>3</sup>	: 47.5 kg
Locked rotor torque	: 320 %		
Breakdown torque	: 400 %		
Insulation class	: F		
Service factor	: 1.25		
Moment of inertia (J)	: 0.0206 kgm <sup>2</sup>		
Design	: B		

Output	50%	75%	100%	Foundation loads	
Efficiency (%)	84.0	86.5	87.5	Max. traction	: 54 kgf
Power Factor	0.45	0.54	0.62	Max. compression	: 101 kgf

Losses at normative operating points (speed;torque), in percentage of rated output power

P1 (0,9;1,0)	P2 (0,5;1,0)	P3 (0,25;1,0)	P4 (0,9;0,5)	P5 (0,5;0,5)	P6 (0,5;0,25)	P7 (0,25;0,25)
13.4	10.3	9.3	8.8	5.8	4.8	3.5

	Drive end	Non drive end
Bearing type	: 6207 C3	6206 C3
Sealing	: Inpro/Seal	Inpro/Seal
Lubrication interval	: 20000 h	20000 h
Lubricant amount	: 7 g	5 g
Lubricant type	Mobil Polyrex EM	

Notes

This revision replaces and cancel the previous one, which must be eliminated.

- (1) Looking the motor from the shaft end.
- (2) Measured at 1m and with tolerance of +3dB(A).
- (3) Approximate weight subject to changes after manufacturing process.
- (4) At 100% of full load.

These are average values based on tests with sinusoidal power supply, subject to the tolerances stipulated in NEMA MG-1.

Rev.	Changes Summary	Performed	Checked	Date
Performed by				
Checked by				
Date	22/10/2024		Page 1 / 2	Revision

# LOAD PERFORMANCE CURVE

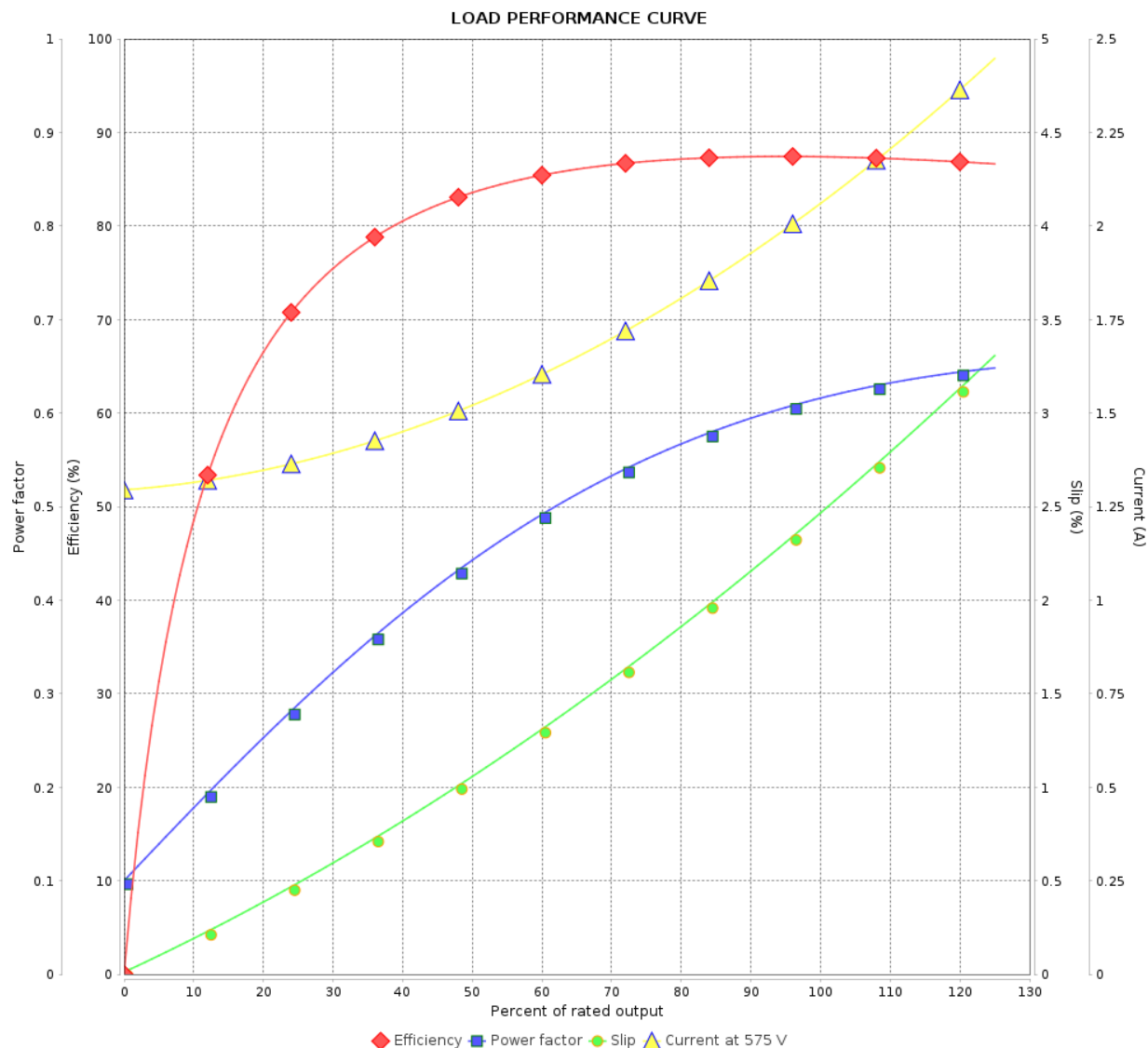
## Three Phase Induction Motor - Squirrel Cage



Customer :

Product line : W22 IEEE 841 NEMA Premium  
Efficiency Three-Phase

Product code : 12373789

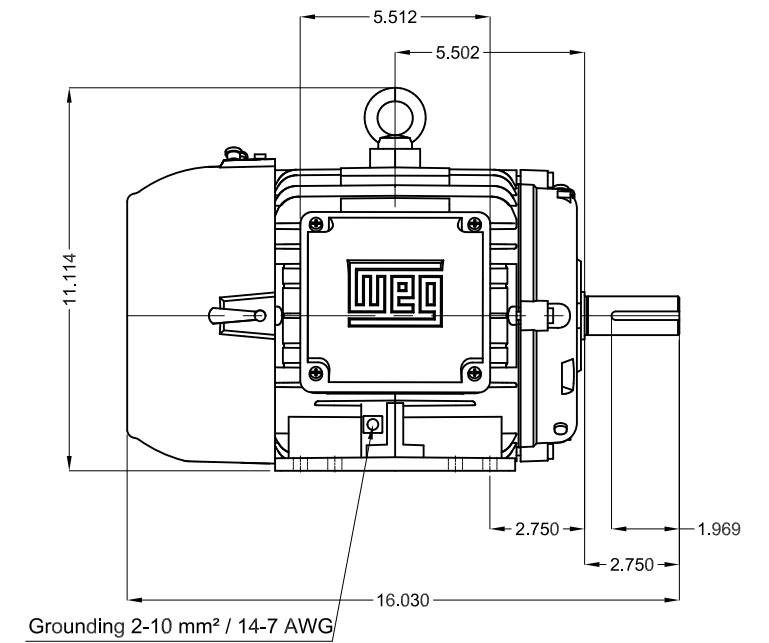
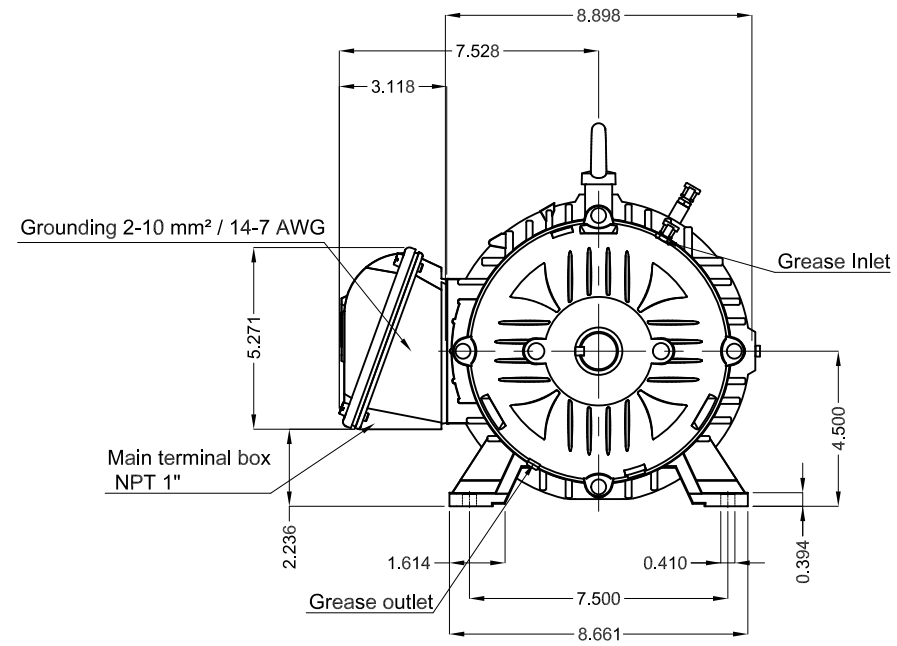
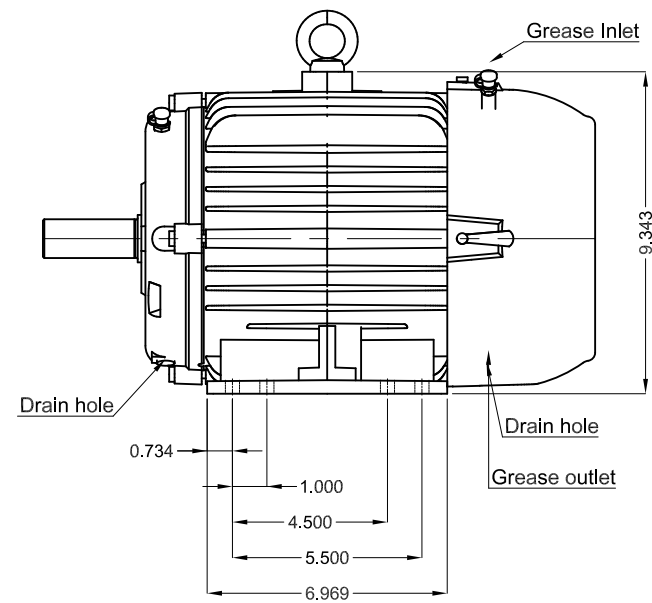


Performance : 575 V 60 Hz 6P

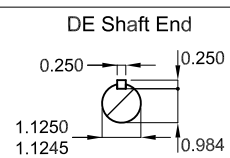
Rated current : 2.03 A  
LRC : 7.8  
Rated torque : 0.930 kgfm  
Locked rotor torque : 320 %  
Breakdown torque : 400 %  
Rated speed : 1170 rpm



Moment of inertia (J) : 0.0206 kgm<sup>2</sup>  
Duty cycle : Cont.(S1)  
Insulation class : F  
Service factor : 1.25  
Temperature rise : 80 K  
Design : B

Rev.	Changes Summary		Performed	Checked	Date
Performed by				Page	Revision
Checked by				2 / 2	
Date					



Grease outlet according to IEEE841
Color RAL 5009
Painting plan 202E
Mounting B3R(D)



1.5 HP   06 Poles   60 Hz										A	
							HYBRISUSER			00	
ECM		LOC	SUMMARY OF MODIFICATIONS				EXECUTED	CHECKED	RELEASED	DATE	VER
EXECUTED	HYBRISUSER		THREE PH. MOTOR IEEE 841 W22 NEMA PREM. EFF. FRAME 182/4T IP56 TEFC					PREVIEW WDD   00			
CHECKED											
RELEASED											
REL. DATE							SHEET		/		