

DATA SHEET

Three Phase Induction Motor - Squirrel Cage



Customer :

Product line : W22 NEMA Premium Efficiency Three-Phase Product code : 12078682

Frame	: 444/5T	Locked rotor time	: 32s (cold) 18s (hot)
Output	: 75 HP (55 kW)	Temperature rise	: 80 K
Poles	: 8	Duty cycle	: Cont.(S1)
Frequency	: 60 Hz	Ambient temperature	: -20°C to +40°C
Rated voltage	: 575 V	Altitude	: 1000 m.a.s.l.
Rated current	: 74.7 A	Protection degree	: IP55
L. R. Amperes	: 478 A	Cooling method	: IC411 - TEFC
LRC	: 6.4x(Code H)	Mounting	: F-1
No load current	: 32.0 A	Rotation ¹	: Both (CW and CCW)
Rated speed	: 890 rpm	Noise level ²	: 63.0 dB(A)
Slip	: 1.11 %	Starting method	: Direct On Line
Rated torque	: 61.2 kgfm	Approx. weight ³	: 678 kg
Locked rotor torque	: 170 %		
Breakdown torque	: 200 %		
Insulation class	: F		
Service factor	: 1.25		
Moment of inertia (J)	: 3.10 kgm ²		
Design	: B		

Output	50%	75%	100%	Foundation loads	
Efficiency (%)	93.0	93.6	93.6	Max. traction	: 731 kgf
Power Factor	0.64	0.74	0.79	Max. compression	: 1408 kgf

Losses at normative operating points (speed;torque), in percentage of rated output power

P1 (0,9;1,0)	P2 (0,5;1,0)	P3 (0,25;1,0)	P4 (0,9;0,5)	P5 (0,5;0,5)	P6 (0,5;0,25)	P7 (0,25;0,25)
6.6	5.2	4.7	3.3	2.2	1.5	1.0

	Drive end	Non drive end
Bearing type	: NU-319 C3	: 6316 C3
Sealing	: WSeal	: WSeal
Lubrication interval	: 15000 h	: 20000 h
Lubricant amount	: 45 g	: 34 g
Lubricant type	: Mobil Polyrex EM	

Notes

This revision replaces and cancel the previous one, which must be eliminated.

- (1) Looking the motor from the shaft end.
- (2) Measured at 1m and with tolerance of +3dB(A).
- (3) Approximate weight subject to changes after manufacturing process.
- (4) At 100% of full load.

These are average values based on tests with sinusoidal power supply, subject to the tolerances stipulated in NEMA MG-1.

Rev.	Changes Summary	Performed	Checked	Date
Performed by				
Checked by				
Date	21/10/2024			

Page 1 / 2
Revision

LOAD PERFORMANCE CURVE

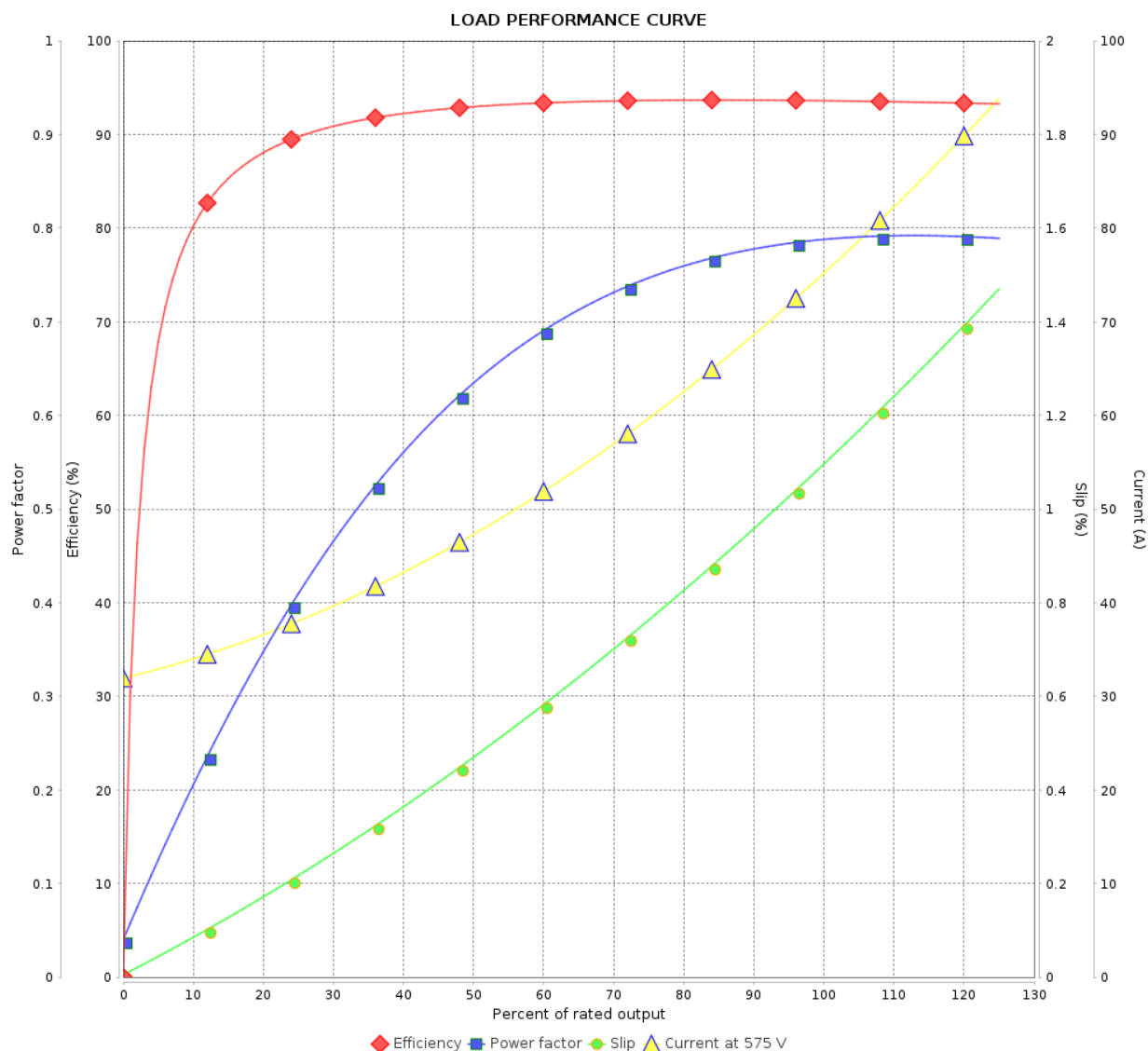
Three Phase Induction Motor - Squirrel Cage



Customer :

Product line : W22 NEMA Premium Efficiency
Three-Phase

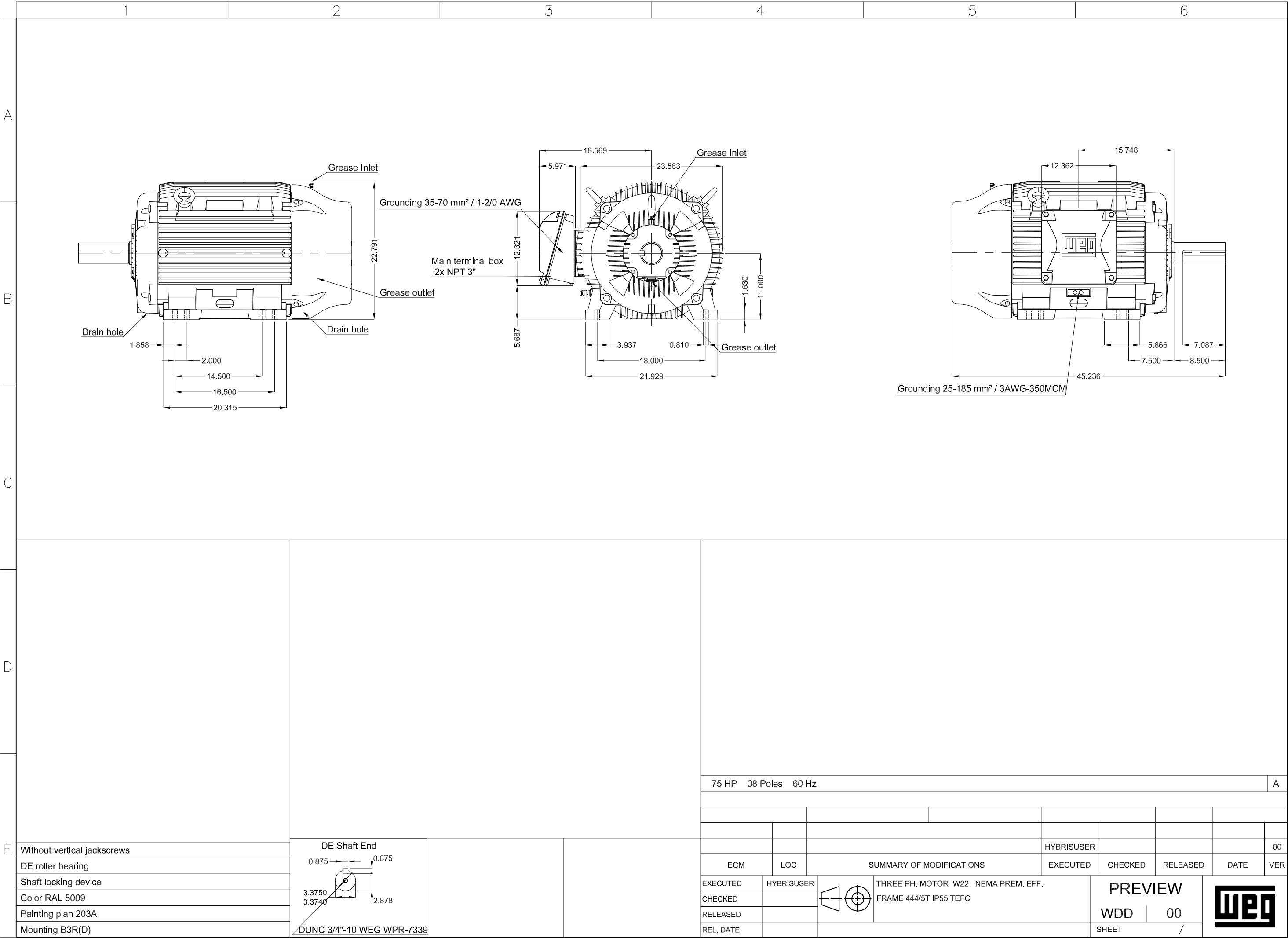
Product code : 12078682



Performance : 575 V 60 Hz 8P

Rated current	: 74.7 A	Moment of inertia (J)	: 3.10 kgm ²
LRC	: 6.4	Duty cycle	: Cont.(S1)
Rated torque	: 61.2 kgfm	Insulation class	: F
Locked rotor torque	: 170 %	Service factor	: 1.25
Breakdown torque	: 200 %	Temperature rise	: 80 K
Rated speed	: 890 rpm	Design	: B

Rev.	Changes Summary	Performed	Checked	Date
Performed by				
Checked by				
Date	21/10/2024		Page 2 / 2	Revision



<