

DATA SHEET

Three Phase Induction Motor - Squirrel Cage



Customer :

Product line : ODP NEMA Premium Efficiency Three-Phase Product code : 14732303

| | | | |
|-----------------------|---------------------------|-----------------------------|------------------------|
| Frame | : 284TSC | Locked rotor time | : 18s (cold) 10s (hot) |
| Output | : 30 HP (22 kW) | Temperature rise | : 80 K |
| Poles | : 2 | Duty cycle | : Cont.(S1) |
| Frequency | : 60 Hz | Ambient temperature | : -20°C to +40°C |
| Rated voltage | : 575 V | Altitude | : 1000 m.a.s.l. |
| Rated current | : 28.0 A | Protection degree | : IP23 |
| L. R. Amperes | : 176 A | Cooling method | : IC01 - ODP |
| LRC | : 6.3x(Code G) | Mounting | : F-1 |
| No load current | : 10.3 A | Rotation ¹ | : Both (CW and CCW) |
| Rated speed | : 3550 rpm | Noise level ² | : 72.0 dB(A) |
| Slip | : 1.39 % | Starting method | : Direct On Line |
| Rated torque | : 6.13 kgfm | Approx. weight ³ | : 156 kg |
| Locked rotor torque | : 180 % | | |
| Breakdown torque | : 260 % | | |
| Insulation class | : F | | |
| Service factor | : 1.15 | | |
| Moment of inertia (J) | : 0.0795 kgm ² | | |
| Design | : B | | |

| | | | | | |
|----------------|------|------|------|------------------|-----------|
| Output | 50% | 75% | 100% | Foundation loads | |
| Efficiency (%) | 90.2 | 91.7 | 91.7 | Max. traction | : 150 kgf |
| Power Factor | 0.73 | 0.82 | 0.86 | Max. compression | : 306 kgf |

| | Drive end | Non drive end |
|----------------------|------------------------|----------------------|
| Bearing type | : 6311 Z C3 | 6211 Z C3 |
| Sealing | : Without Bearing Seal | Without Bearing Seal |
| Lubrication interval | : 20000 h | 20000 h |
| Lubricant amount | : 18 g | 11 g |
| Lubricant type | Mobil Polyrex EM | |

Notes

This revision replaces and cancel the previous one, which must be eliminated.

- (1) Looking the motor from the shaft end.
- (2) Measured at 1m and with tolerance of +3dB(A).
- (3) Approximate weight subject to changes after manufacturing process.
- (4) At 100% of full load.

These are average values based on tests with sinusoidal power supply, subject to the tolerances stipulated in NEMA MG-1.

| Rev. | Changes Summary | Performed | Checked | Date |
|--------------|-----------------|------------------------|---------|------|
| | | | | |
| Performed by | | Page Revision 1 / 2 | | |
| Checked by | | | | |
| Date | 03/05/2025 | | | |

LOAD PERFORMANCE CURVE

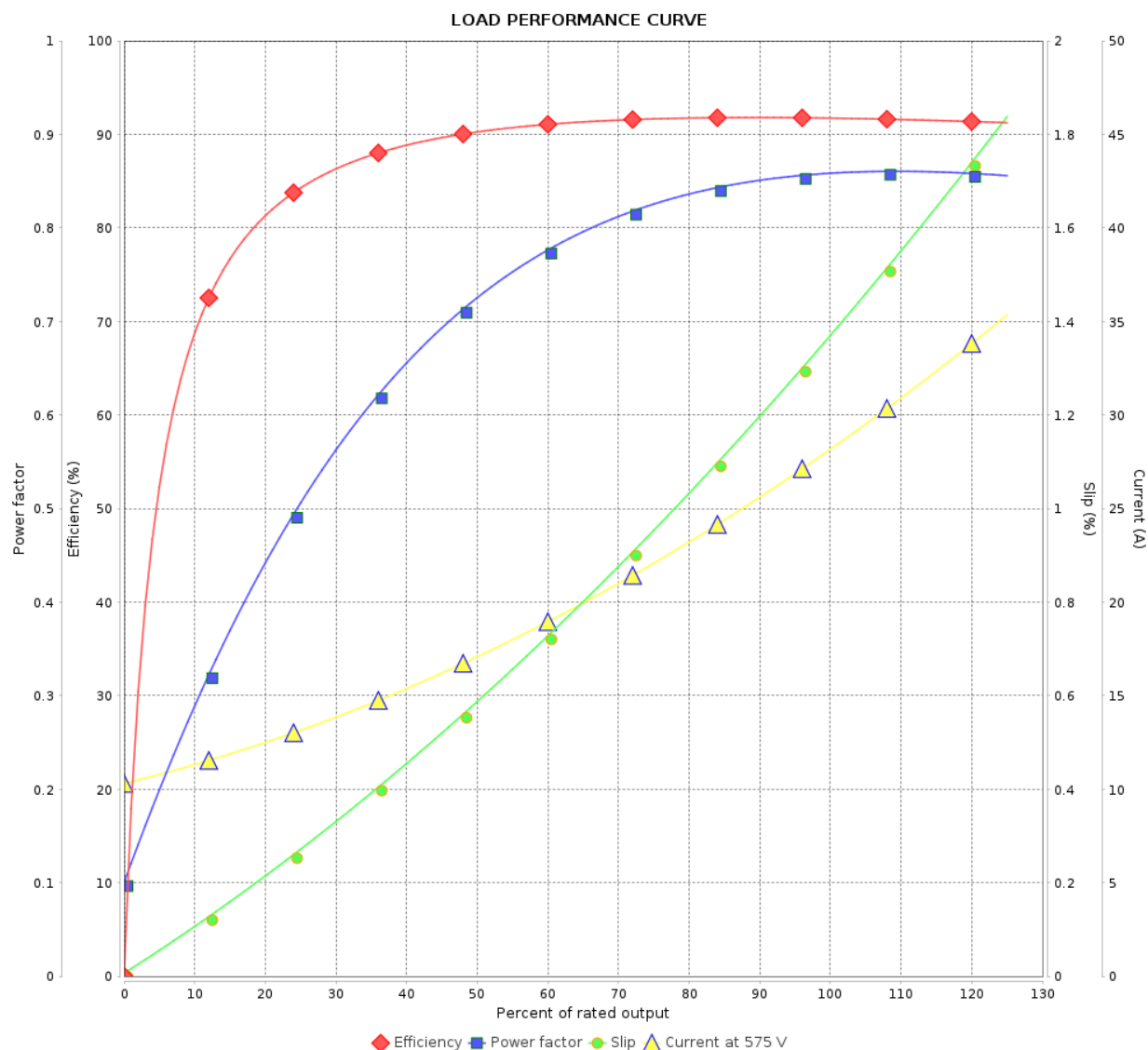
Three Phase Induction Motor - Squirrel Cage



Customer :

Product line : ODP NEMA Premium Efficiency
Three-Phase

Product code : 14732303

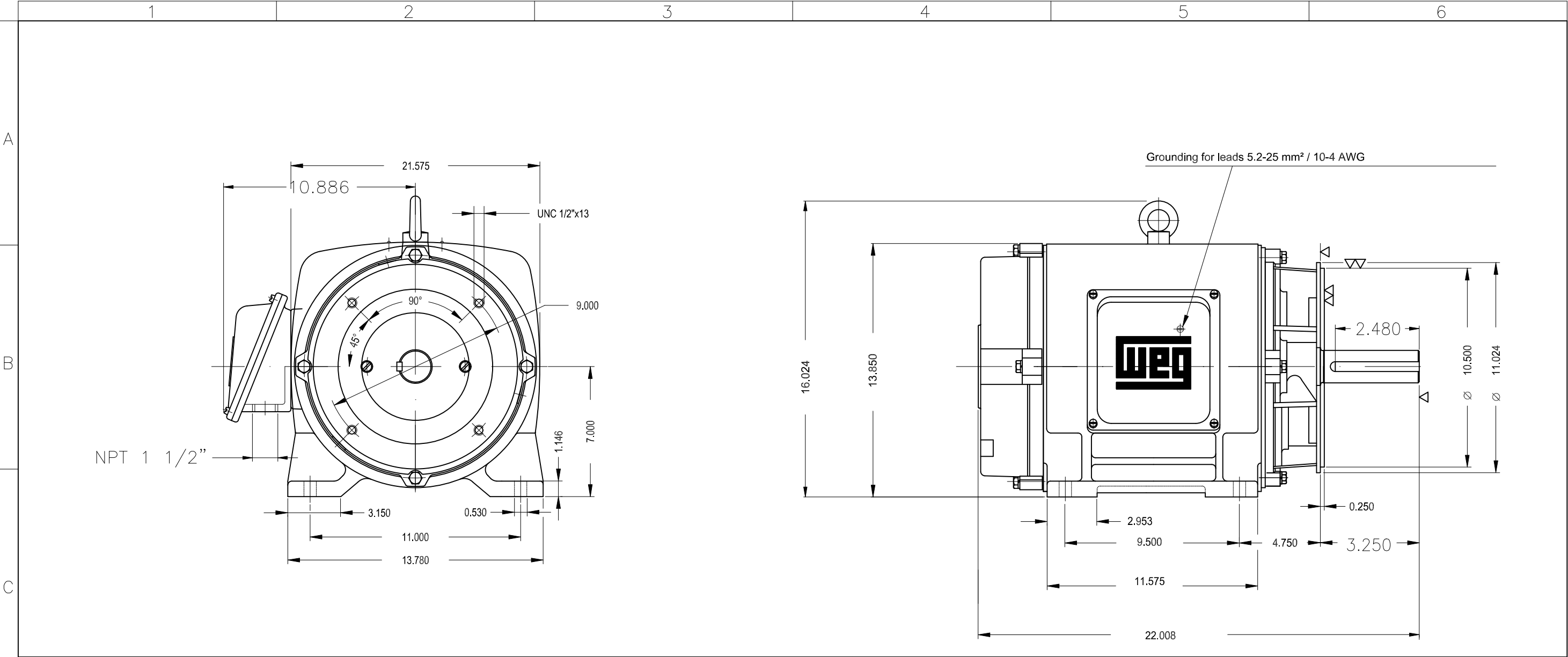


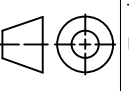

Performance : 575 V 60 Hz 2P

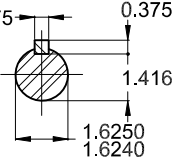
Rated current : 28.0 A
LRC : 6.3
Rated torque : 6.13 kgfm
Locked rotor torque : 180 %
Breakdown torque : 260 %
Rated speed : 3550 rpm

Moment of inertia (J) : 0.0795 kgm²
Duty cycle : Cont.(S1)
Insulation class : F
Service factor : 1.15
Temperature rise : 80 K
Design : B

| Rev. | Changes Summary | Performed | Checked | Date |
|--------------|-----------------|-----------------------|---------|------|
| | | | | |
| Performed by | | Page 2 / 2Revision | | |
| Checked by | | | | |
| Date | 03/05/2025 | | | |



| | | | | | | | | | | | | | | | | |
|---|--|--|--|--|----------------------|------------|--------------------------|---|--|------------|--|----------|---------|---------------------|-------|---|
| D | | | | | 30 HP 02 Poles 60 Hz | | | | | | | | | | A | |
| | | | | | | | | | | | | | | | | |
| | | | | | | | | | | | | | | | | |
| | | | | | | | | | | | | | | | | |
| | | | | | | | | | | HYBRISUSER | | | | | | 00 |
| | | | | | ECM | LOC | SUMMARY OF MODIFICATIONS | | | | | EXECUTED | CHECKED | RELEASED | DATE | VER |
| | | | | | EXECUTED | HYBRISUSER | |  | THREE PH. MOTOR GENERAL NEMA PREM. EFF. FRAME 284TSC IP23 ODP | | | | | PREVIEW | |  |
| | | | | | CHECKED | | | | | | | | | WDD | 00 | |
| | | | | | RELEASED | | | | | | | | | | | |
| | | | | | REL. DATE | | | WMO | Jaragua do Sul | | | | | Product Engineering | SHEET | 1 / 1 |

| | | | | |
|--------------------|--|--|--|--|
| E | | <div>DE Shaft End</div>  | | |
| | | | | |
| | | | | |
| | | | | |
| Color RAL 5009 | | | | |
| Painting plan 203A | | | | |
| Mounting NEMA F-1 | | | | |
| Mounting B34D | | | | |