

DATA SHEET

Three Phase Induction Motor - Squirrel Cage



Customer :

Product line : W22 Brake Motor NEMA Premium Product code : 14815569
Efficiency Three-Phase

Frame	: 284/6TC	Locked rotor time	: 36s (cold) 20s (hot)
Output	: 30 HP (22 kW)	Temperature rise	: 80 K
Poles	: 4	Duty cycle	: Cont.(S1)
Frequency	: 60 Hz	Ambient temperature	: -20°C to +40°C
Rated voltage	: 575 V	Altitude	: 1000 m.a.s.l.
Rated current	: 28.1 A	Protection degree	: IP55
L. R. Amperes	: 171 A	Cooling method	: IC411 - TEFC
LRC	: 6.1x(Code G)	Mounting	: F-1
No load current	: 9.84 A	Rotation ¹	: Both (CW and CCW)
Rated speed	: 1770 rpm	Noise level ²	: 63.0 dB(A)
Slip	: 1.67 %	Starting method	: Direct On Line
Rated torque	: 12.3 kgfm	Approx. weight ³	: 236 kg
Locked rotor torque	: 240 %		
Breakdown torque	: 240 %		
Insulation class	: F		
Service factor	: 1.25		
Moment of inertia (J)	: 0.2467 kgm ²		
Design	: B		

Output	25%	50%	75%	100%	Foundation loads	
Efficiency (%)	0.000	93.0	93.0	93.6	Max. traction	: 304 kgf
Power Factor	0.00	0.70	0.80	0.84	Max. compression	: 540 kgf

Losses at normative operating points (speed;torque), in percentage of rated output power

P1 (0,9;1,0)	P2 (0,5;1,0)	P3 (0,25;1,0)	P4 (0,9;0,5)	P5 (0,5;0,5)	P6 (0,5;0,25)	P7 (0,25;0,25)
6.8	5.8	5.2	3.1	2.2	1.4	0.9

	Drive end	Non drive end
Bearing type	: 6311 C3	6211 C3
Sealing	: V'Ring	Lip Seal
Lubrication interval	: 20000 h	20000 h
Lubricant amount	: 18 g	11 g
Lubricant type	Mobil Polyrex EM	

Notes

This revision replaces and cancel the previous one, which must be eliminated.

- (1) Looking the motor from the shaft end.
- (2) Measured at 1m and with tolerance of +3dB(A).
- (3) Approximate weight subject to changes after manufacturing process.
- (4) At 100% of full load.

These are average values based on tests with sinusoidal power supply, subject to the tolerances stipulated in NEMA MG-1.

Rev.	Changes Summary	Performed	Checked	Date
Performed by				
Checked by				
Date	11/09/2025			
			Page	Revision
			1 / 3	

DATA SHEET

Three Phase Induction Motor - Squirrel Cage



Customer :

Brake information

Voltage: 220-240 V
Brake Torque: 26.5 kgfm

Rev.	Changes Summary		Performed	Checked	Date
Performed by			Page 2 / 3		Revision
Checked by					
Date	11/09/2025				

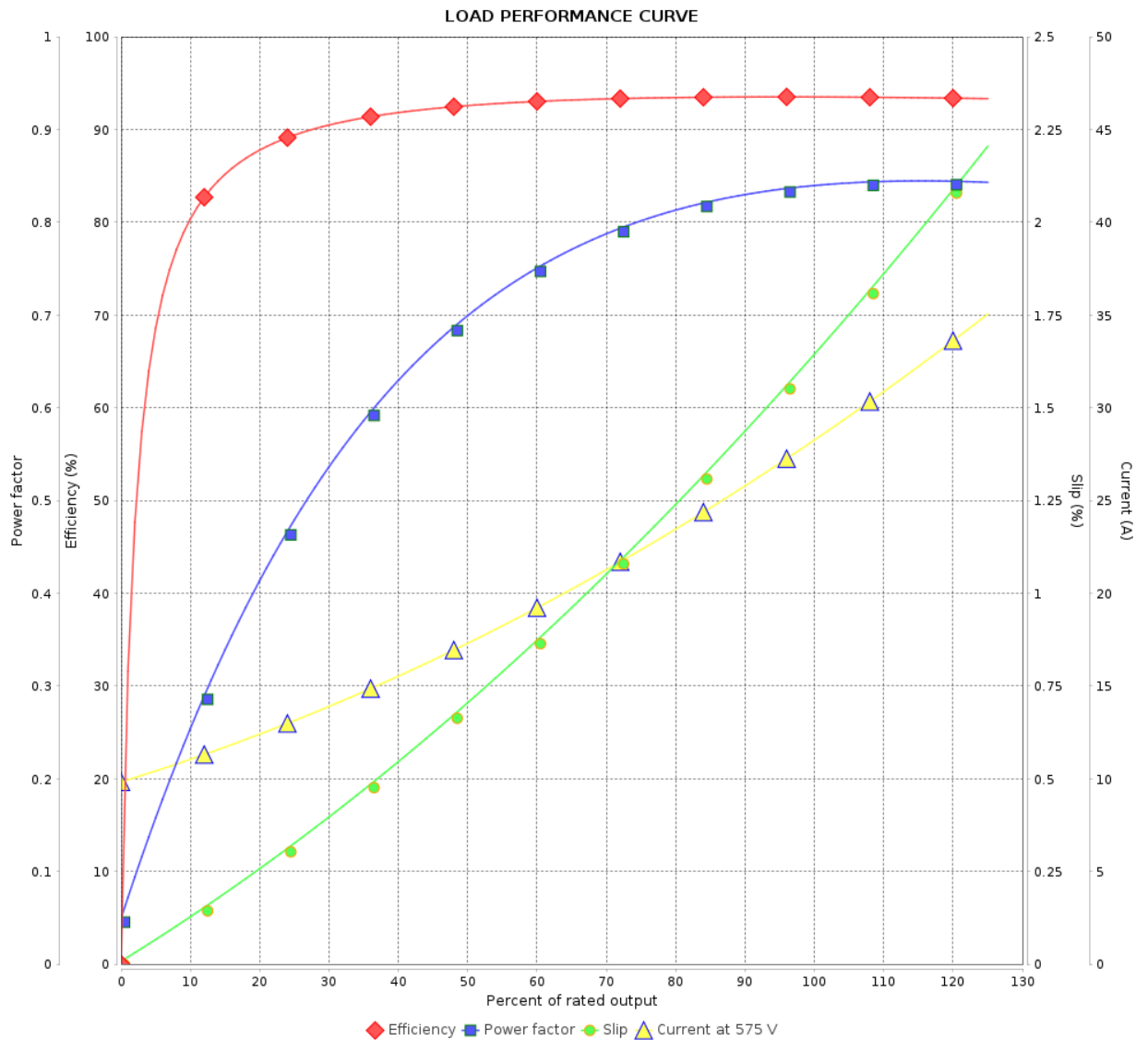
LOAD PERFORMANCE CURVE

Three Phase Induction Motor - Squirrel Cage



Customer :

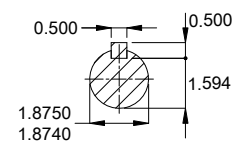
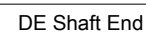
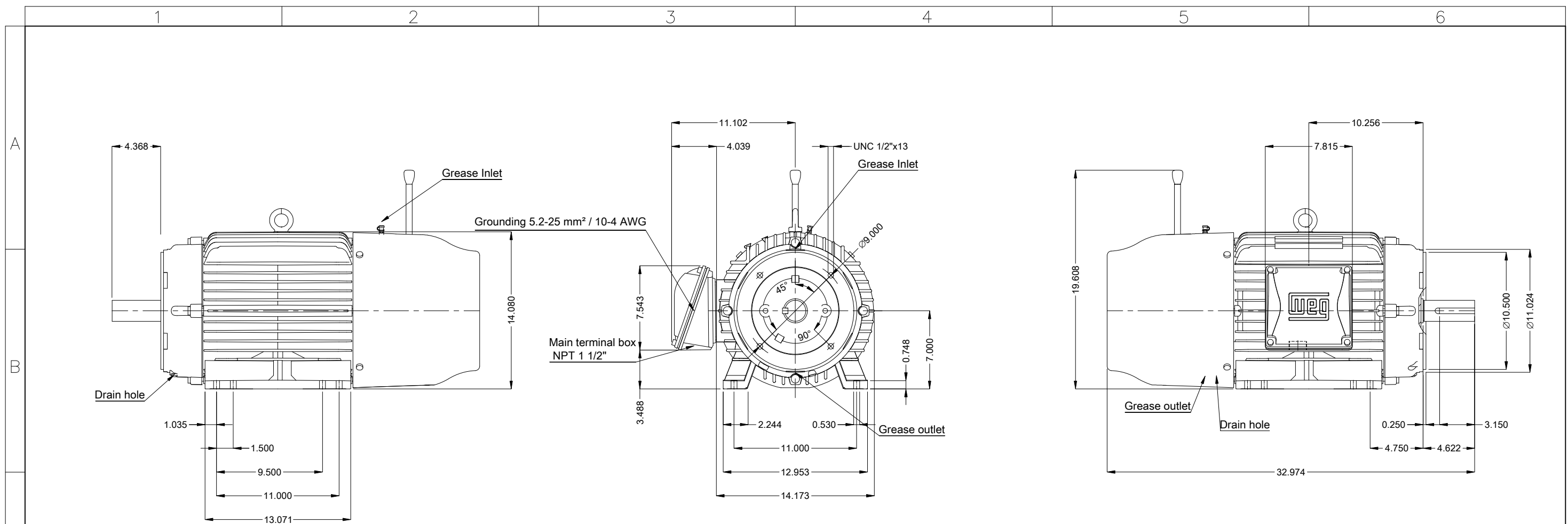
Product line : W22 Brake Motor NEMA Premium Efficiency Three-Phase Product code : 14815569





Performance : 575 V 60 Hz 4P

Rated current	: 28.1 A	Moment of inertia (J)	: 0.2467 kgm ²
LRC	: 6.1	Duty cycle	: Cont.(S1)
Rated torque	: 12.3 kgfm	Insulation class	: F
Locked rotor torque	: 240 %	Service factor	: 1.25
Breakdown torque	: 240 %	Temperature rise	: 80 K
Rated speed	: 1770 rpm	Design	: B

Rev.	Changes Summary	Performed	Checked	Date
Performed by				
Checked by				
Date	11/09/2025		Page 3 / 3	Revision



Brake 20 (260 Nm)
Color RAL 5009
Painting plan 203A
Mounting NEMA F-1
Mounting B34D

30 HP 04 Poles 60 Hz										A
						Scale 1 : 9				
						HYBRISUSER				00
ECM	LOC	SUMMARY OF MODIFICATIONS				EXECUTED	CHECKED	RELEASED	DATE	VER
EXECUTED	HYBRISUSER		THREE PH. MOTOR W22 BRAKE MOTOR NEMA PREM. EFF.				PREVIEW			
CHECKED			FRAME 284/6TC IP55 TEFC							
RELEASED							WDD	00		
REL. DATE							SHEET	1 / 1		