

DATA SHEET



Three Phase Induction Motor - Squirrel Cage

Customer :

Product line : W22 NEMA Premium Efficiency Three-Phase Product code : 12038158

Frame	: 284/6T	Locked rotor time	: 45s (cold) 25s (hot)
Output	: 15 HP (11 kW)	Temperature rise	: 80 K
Poles	: 8	Duty cycle	: Cont.(S1)
Frequency	: 60 Hz	Ambient temperature	: -20°C to +40°C
Rated voltage	: 575 V	Altitude	: 1000 m.a.s.l.
Rated current	: 15.7 A	Protection degree	: IP55
L. R. Amperes	: 86.2 A	Cooling method	: IC411 - TEFC
LRC	: 5.5x(Code G)	Mounting	: F-1
No load current	: 7.84 A	Rotation ¹	: Both (CW and CCW)
Rated speed	: 880 rpm	Noise level ²	: 54.0 dB(A)
Slip	: 2.22 %	Starting method	: Direct On Line
Rated torque	: 12.4 kgfm	Approx. weight ³	: 190 kg
Locked rotor torque	: 200 %		
Breakdown torque	: 229 %		
Insulation class	: F		
Service factor	: 1.25		
Moment of inertia (J)	: 0.3448 kgm ²		
Design	: B		

Output	50%	75%	100%	Foundation loads	
Efficiency (%)	85.5	90.0	90.2	Max. traction	: 312 kgf
Power Factor	0.62	0.72	0.78	Max. compression	: 502 kgf

Losses at normative operating points (speed;torque), in percentage of rated output power

P1 (0,9;1,0)	P2 (0,5;1,0)	P3 (0,25;1,0)	P4 (0,9;0,5)	P5 (0,5;0,5)	P6 (0,5;0,25)	P7 (0,25;0,25)
10.3	8.2	7.6	5.5	3.7	2.7	1.8

		<u>Drive end</u>	<u>Non drive end</u>
Bearing type	:	6311 C3	6211 C3
Sealing	:	V'Ring	V'Ring
Lubrication interval	:	20000 h	20000 h
Lubricant amount	:	18 g	11 g
Lubricant type	:	Mobil Polyrex EM	

Notes

This revision replaces and cancel the previous one, which must be eliminated.

- (1) Looking the motor from the shaft end.
- (2) Measured at 1m and with tolerance of +3dB(A).
- (3) Approximate weight subject to changes after manufacturing process.
- (4) At 100% of full load.

These are average values based on tests with sinusoidal power supply, subject to the tolerances stipulated in NEMA MG-1.

Rev.	Changes Summary	Performed	Checked	Date
Performed by		Page		Revision
Checked by		1 / 2		
Date	21/10/2024			

LOAD PERFORMANCE CURVE

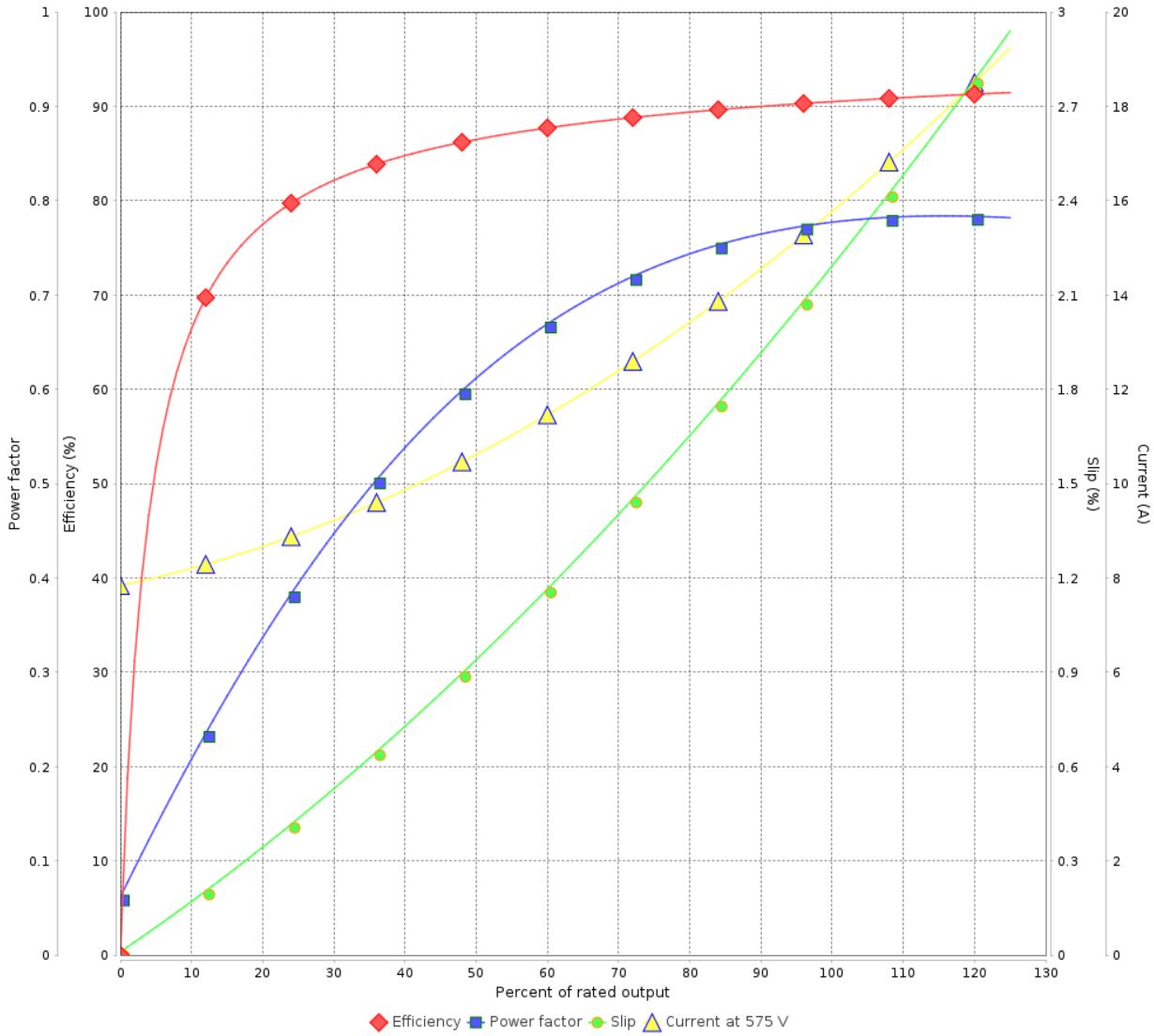
Three Phase Induction Motor - Squirrel Cage



Customer : _____

Product line : W22 NEMA Premium Efficiency Three-Phase Product code : 12038158

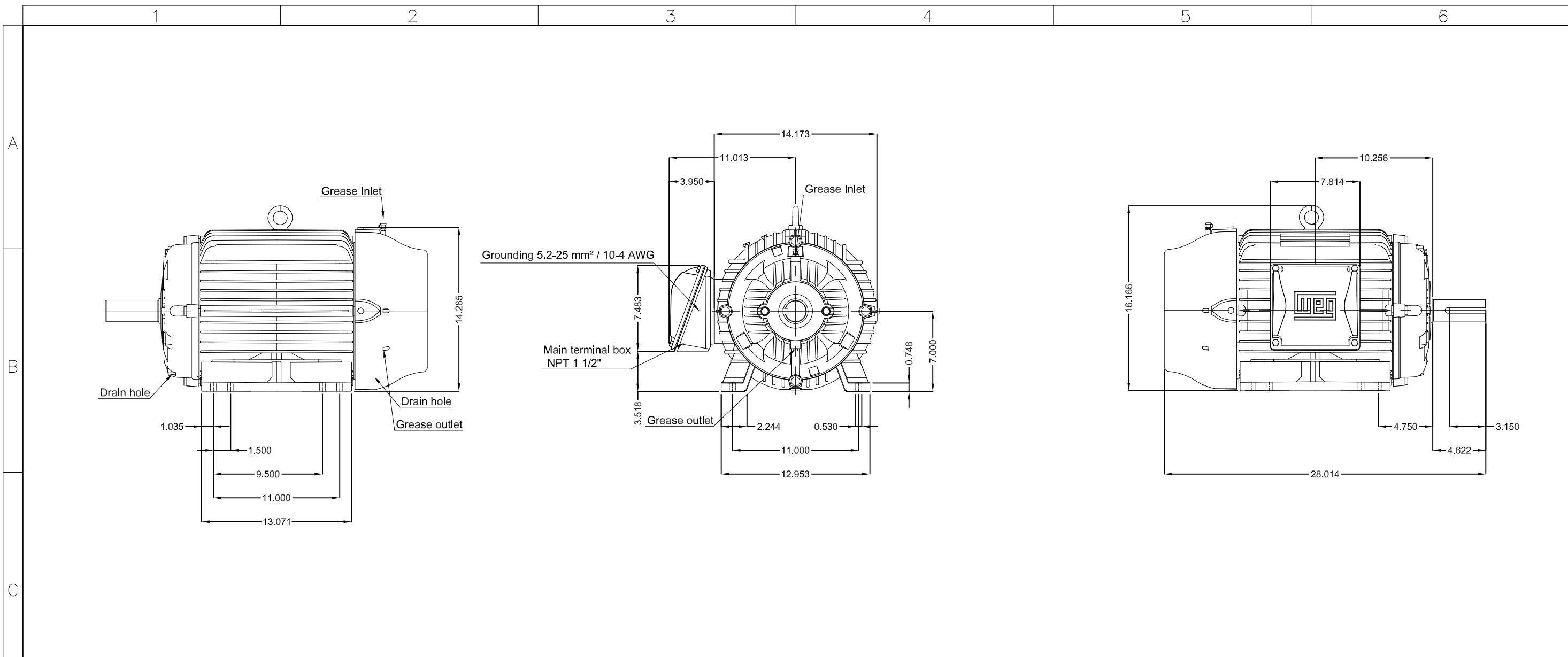
LOAD PERFORMANCE CURVE



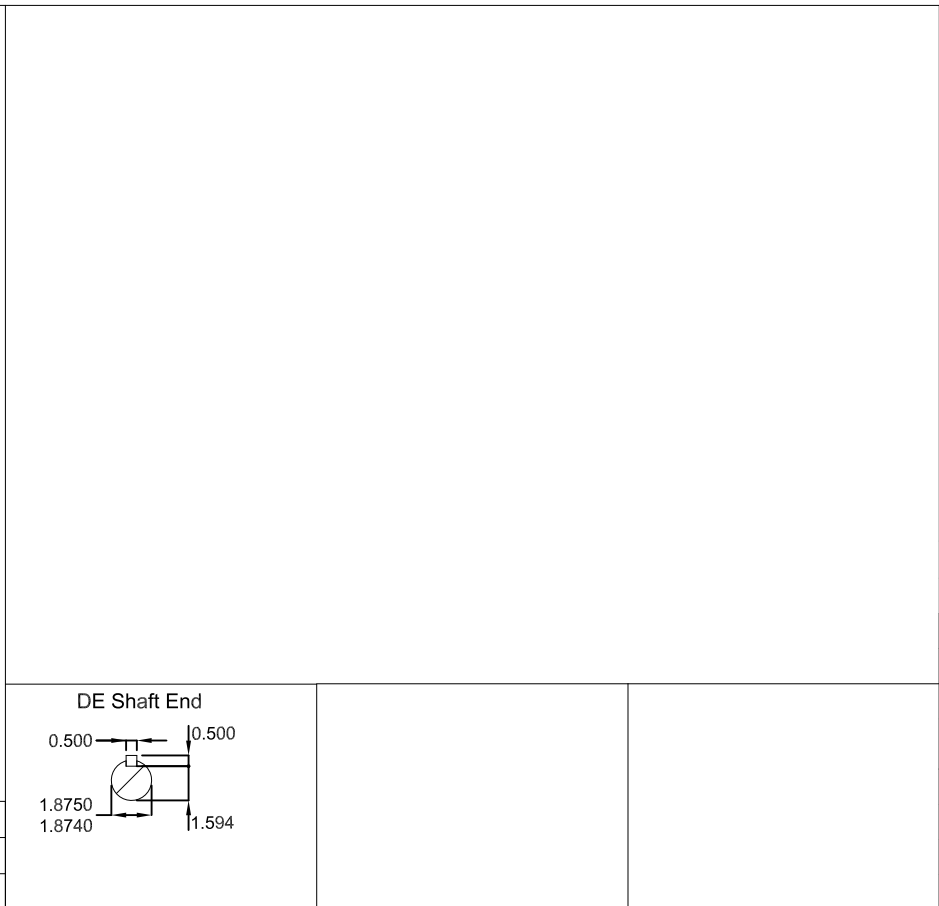
Performance : 575 V 60 Hz 8P

Rated current	: 15.7 A	Moment of inertia (J)	: 0.3448 kgm ²
LRC	: 5.5	Duty cycle	: Cont.(S1)
Rated torque	: 12.4 kgfm	Insulation class	: F
Locked rotor torque	: 200 %	Service factor	: 1.25
Breakdown torque	: 229 %	Temperature rise	: 80 K
Rated speed	: 880 rpm	Design	: B

Rev.	Changes Summary	Performed	Checked	Date
Performed by			Page 2 / 2	Revision
Checked by				
Date	21/10/2024			



Color RAL 5009
Painting plan 203A
Mounting B3R(D)



15 HP 08 Poles 60 Hz										A	
ECM	LOC	SUMMARY OF MODIFICATIONS					HYBRISUSER				00
EXECUTED	HYBRISUSER	THREE PH. MOTOR W22 NEMA PREM. EFF.					EXECUTED	CHECKED	RELEASED	DATE	VER
CHECKED		FRAME 284/6T IP55 TEFC									
RELEASED											
REL. DATE											
						PREVIEW		WDD 00			
						SHEET /					