

DATA SHEET

Three Phase Induction Motor - Squirrel Cage



Customer :

Product line : W22 NEMA Premium Efficiency Three-Phase Product code : 12447062

Frame	: 254/6T	Locked rotor time	: 36s (cold) 20s (hot)
Output	: 15 HP (11 kW)	Temperature rise	: 80 K
Poles	: 2	Duty cycle	: Cont.(S1)
Frequency	: 60 Hz	Ambient temperature	: -20°C to +40°C
Rated voltage	: 575 V	Altitude	: 1000 m.a.s.l.
Rated current	: 13.8 A	Protection degree	: IP55
L. R. Amperes	: 92.4 A	Cooling method	: IC411 - TEFC
LRC	: 6.7x(Code G)	Mounting	: F-1
No load current	: 4.24 A	Rotation ¹	: Both (CW and CCW)
Rated speed	: 3532 rpm	Noise level ²	: 72.0 dB(A)
Slip	: 1.89 %	Starting method	: Direct On Line
Rated torque	: 3.08 kgfm	Approx. weight ³	: 118 kg
Locked rotor torque	: 220 %		
Breakdown torque	: 270 %		
Insulation class	: F		
Service factor	: 1.25		
Moment of inertia (J)	: 0.0530 kgm ²		
Design	: B		

Output	25%	50%	75%	100%	Foundation loads	
Efficiency (%)	0.000	89.5	91.0	91.0	Max. traction	: 72 kgf
Power Factor	0.00	0.77	0.85	0.88	Max. compression	: 189 kgf

Losses at normative operating points (speed;torque), in percentage of rated output power

P1 (0,9;1,0)	P2 (0,5;1,0)	P3 (0,25;1,0)	P4 (0,9;0,5)	P5 (0,5;0,5)	P6 (0,5;0,25)	P7 (0,25;0,25)
9.1	6.6	6.2	5.1	2.8	1.9	1.1

		<u>Drive end</u>	<u>Non drive end</u>
Bearing type	:	6309 C3	6209 C3
Sealing	:	V'Ring	V'Ring
Lubrication interval	:	19000 h	20000 h
Lubricant amount	:	13 g	9 g
Lubricant type	:	Mobil Polyrex EM	

Notes

This revision replaces and cancel the previous one, which must be eliminated.

- (1) Looking the motor from the shaft end.
- (2) Measured at 1m and with tolerance of +3dB(A).
- (3) Approximate weight subject to changes after manufacturing process.
- (4) At 100% of full load.

These are average values based on tests with sinusoidal power supply, subject to the tolerances stipulated in NEMA MG-1.

Rev.	Changes Summary	Performed	Checked	Date
Performed by		Page 1 / 2 Revision		
Checked by				
Date	20/10/2024			

LOAD PERFORMANCE CURVE

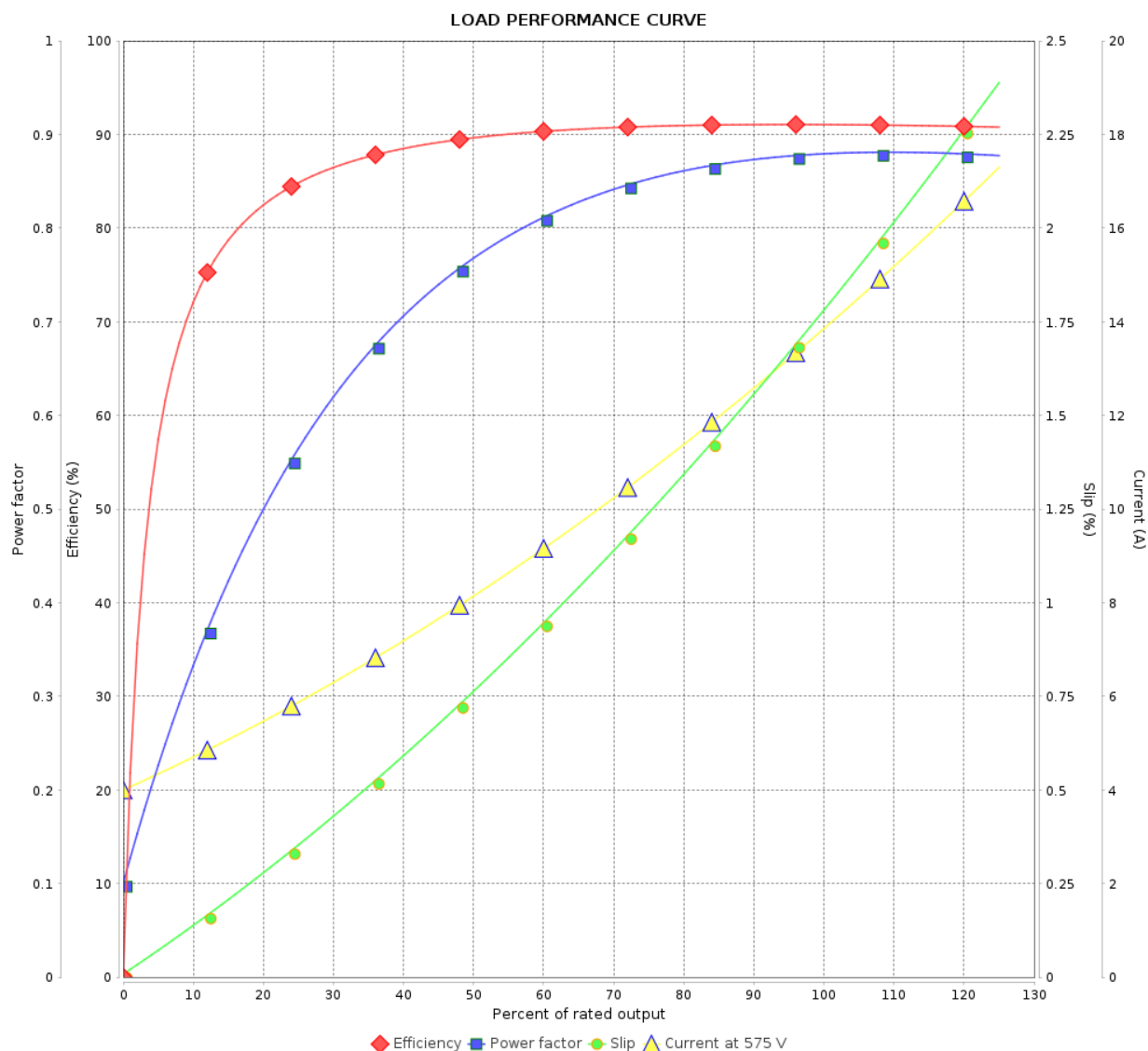
Three Phase Induction Motor - Squirrel Cage



Customer :

Product line : W22 NEMA Premium Efficiency
Three-Phase

Product code : 12447062

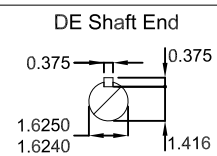
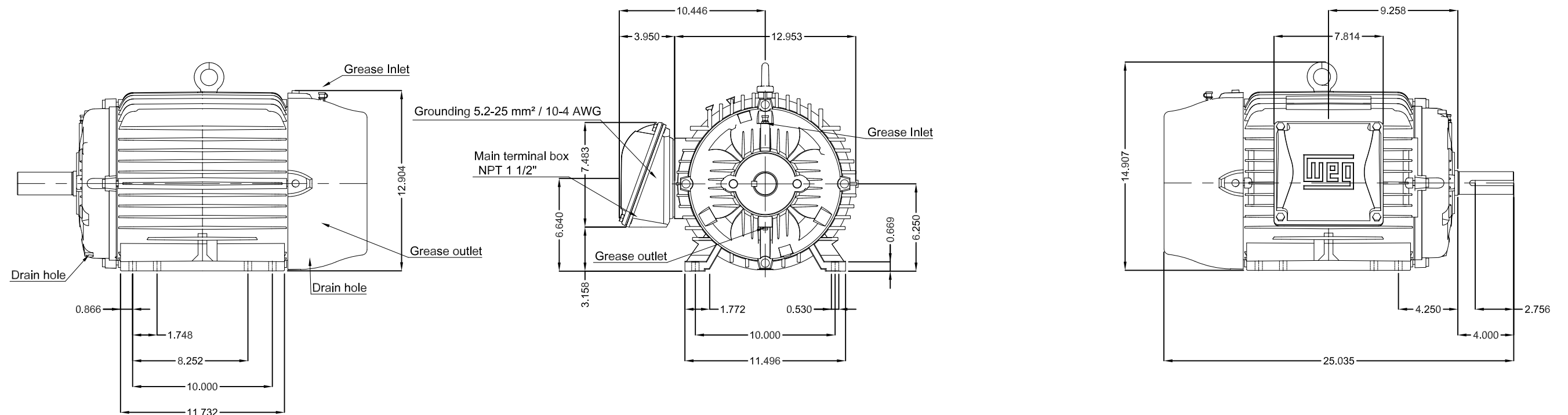


Performance : 575 V 60 Hz 2P



Rated current : 13.8 A
LRC : 6.7
Rated torque : 3.08 kgfm
Locked rotor torque : 220 %
Breakdown torque : 270 %
Rated speed : 3532 rpm

Moment of inertia (J) : 0.0530 kgm²
Duty cycle : Cont.(S1)
Insulation class : F
Service factor : 1.25
Temperature rise : 80 K
Design : B

Rev.	Changes Summary		Performed	Checked	Date
Performed by				Page	Revision
Checked by				2 / 2	
Date					



Color RAL 5009
Painting plan 203A
Mounting B3R(D)

15 HP 02 Poles 60 Hz										A
							HYBRISUSER			
		SUMMARY OF MODIFICATIONS			EXECUTED	CHECKED	RELEASED	DATE	VER	00
ECM	LOC									
EXECUTED	HYBRISUSER		THREE PH. MOTOR W22 NEMA PREM. EFF. FRAME 254/6T IP55 TEFC			PREVIEW WDD 00				A3
CHECKED										
RELEASED										
REL. DATE										
						SHEET	/			