

# DATA SHEET



## Three Phase Induction Motor - Squirrel Cage

Customer :					
Product line		: ODP NEMA Premium Efficiency Three-Phase		Product code : 11914799	
Frame	: 256TC	Locked rotor time	: 16s (cold) 9s (hot)		
Output	: 25 HP (18.5 kW)	Temperature rise	: 80 K		
Poles	: 2	Duty cycle	: Cont.(S1)		
Frequency	: 60 Hz	Ambient temperature	: -20°C to +40°C		
Rated voltage	: 575 V	Altitude	: 1000 m.a.s.l.		
Rated current	: 23.8 A	Protection degree	: IP23		
L. R. Amperes	: 155 A	Cooling method	: IC01 - ODP		
LRC	: 6.5x(Code G)	Mounting	: F-1		
No load current	: 8.80 A	Rotation <sup>1</sup>	: Both (CW and CCW)		
Rated speed	: 3530 rpm	Noise level <sup>2</sup>	: 67.0 dB(A)		
Slip	: 1.94 %	Starting method	: Direct On Line		
Rated torque	: 5.14 kgfm	Approx. weight <sup>3</sup>	: 110 kg		
Locked rotor torque	: 200 %				
Breakdown torque	: 260 %				
Insulation class	: F				
Service factor	: 1.15				
Moment of inertia (J)	: 0.0456 kgm <sup>2</sup>				
Design	: B				
Output	50%	75%	100%	Foundation loads	
Efficiency (%)	91.0	91.7	91.7	Max. traction : 155 kgf	
Power Factor	0.73	0.82	0.85	Max. compression : 265 kgf	
		<u>Drive end</u>	<u>Non drive end</u>		
Bearing type	:	6309 Z C3	6209 Z C3		
Sealing	:	Without Bearing Seal	Without Bearing Seal		
Lubrication interval	:	20000 h	20000 h		
Lubricant amount	:	13 g	9 g		
Lubricant type	:	Mobil Polyrex EM			
Notes					
This revision replaces and cancel the previous one, which must be eliminated. (1) Looking the motor from the shaft end. (2) Measured at 1m and with tolerance of +3dB(A). (3) Approximate weight subject to changes after manufacturing process. (4) At 100% of full load.			These are average values based on tests with sinusoidal power supply, subject to the tolerances stipulated in NEMA MG-1.		
Rev.	Changes Summary		Performed	Checked	Date
Performed by					
Checked by				Page	Revision
Date	02/04/2025			1 / 2	

# LOAD PERFORMANCE CURVE

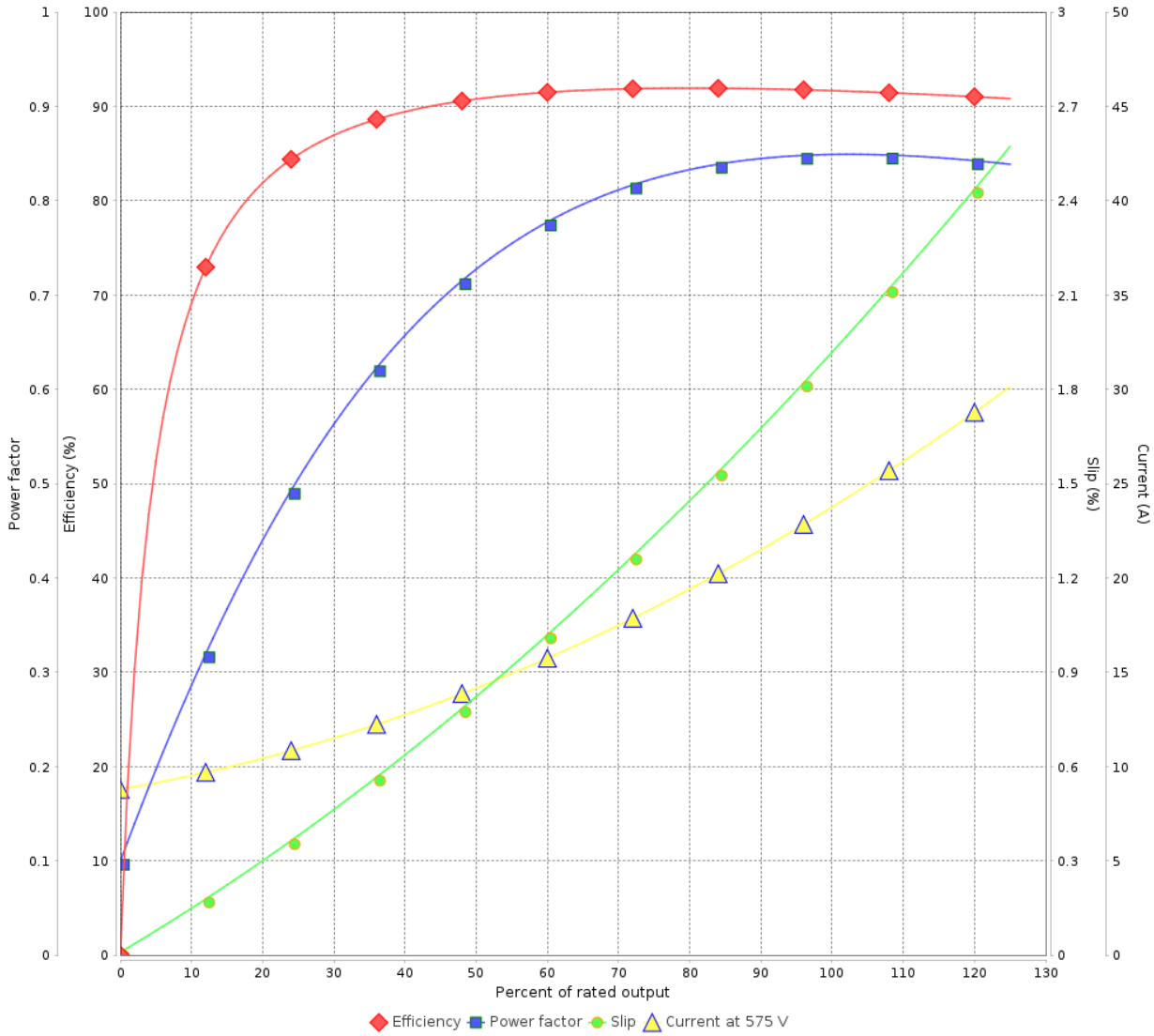
Three Phase Induction Motor - Squirrel Cage



Customer :

Product line : ODP NEMA Premium Efficiency Three-Phase      Product code : 11914799

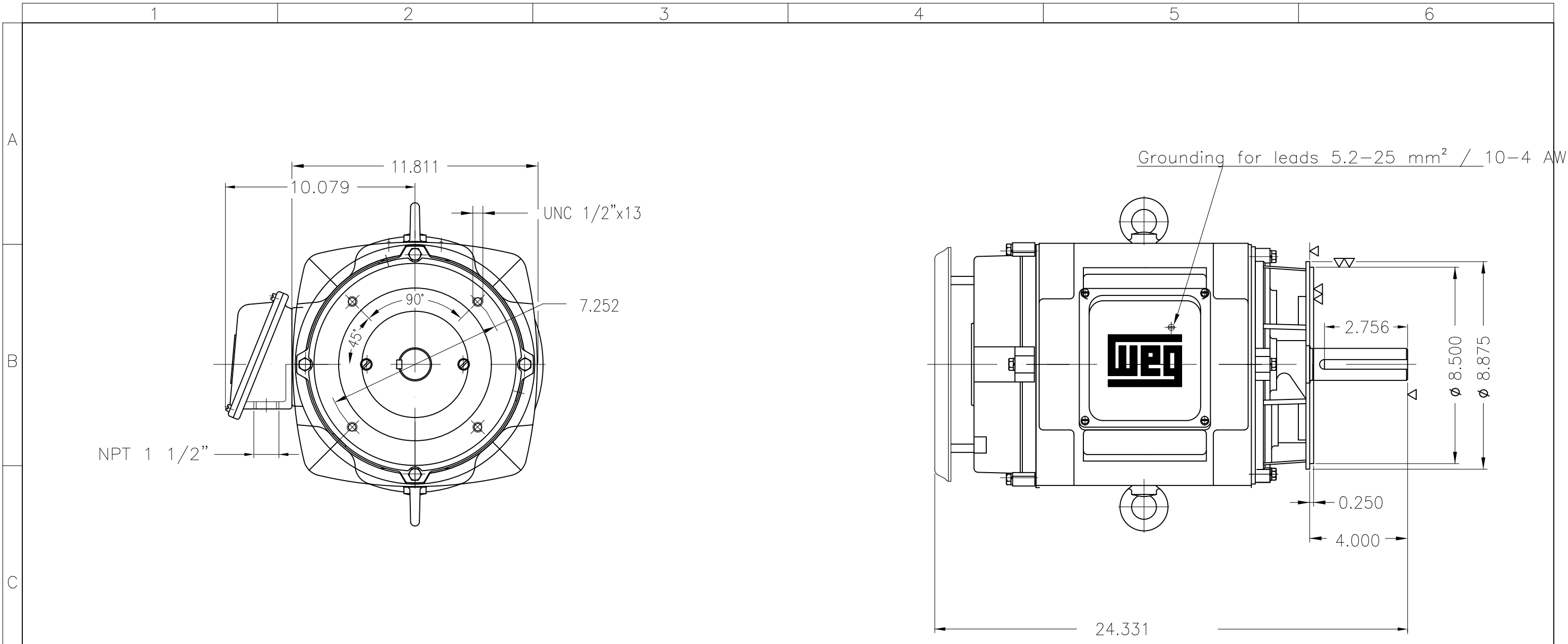
LOAD PERFORMANCE CURVE



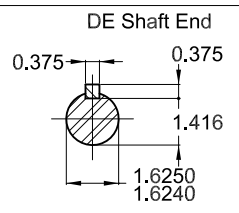
Performance : 575 V 60 Hz 2P

Rated current	: 23.8 A	Moment of inertia (J)	: 0.0456 kgm <sup>2</sup>
LRC	: 6.5	Duty cycle	: Cont.(S1)
Rated torque	: 5.14 kgfm	Insulation class	: F
Locked rotor torque	: 200 %	Service factor	: 1.15
Breakdown torque	: 260 %	Temperature rise	: 80 K
Rated speed	: 3530 rpm	Design	: B

Rev.	Changes Summary	Performed	Checked	Date
Performed by			Page	Revision
Checked by			2 / 2	
Date	02/04/2025			



Color RAL 5009  
 Painting plan 203A  
 Mounting B14R(D)



25 HP 02 Poles 60 Hz										A	
ECM	LOC	SUMMARY OF MODIFICATIONS					EXECUTED	CHECKED	RELEASED	DATE	VER
EXECUTED	HYBRISUSER	THREE PH. MOTOR GENERAL NEMA PREM. EFF.									00
CHECKED		FRAME 256TC IP23 ODP									
RELEASED											
REL. DATE		WMO	Jaragua do Sul	Product Engineering			PREVIEW		WDD   00		
							SHEET		1 / 1		

