

DATA SHEET

Three Phase Induction Motor - Squirrel Cage



Customer :

Product line : W22 NEMA Premium Efficiency Three-Phase Product code : 11611342

Frame	: 213/5T	Locked rotor time	: 32s (cold) 18s (hot)
Output	: 10 HP (7.5 kW)	Temperature rise	: 80 K
Poles	: 2	Duty cycle	: Cont.(S1)
Frequency	: 60 Hz	Ambient temperature	: -20°C to +40°C
Rated voltage	: 575 V	Altitude	: 1000 m.a.s.l.
Rated current	: 9.28 A	Protection degree	: IP55
L. R. Amperes	: 66.8 A	Cooling method	: IC411 - TEFC
LRC	: 7.2x(Code H)	Mounting	: F-1
No load current	: 2.88 A	Rotation ¹	: Both (CW and CCW)
Rated speed	: 3530 rpm	Noise level ²	: 68.0 dB(A)
Slip	: 1.94 %	Starting method	: Direct On Line
Rated torque	: 2.06 kgfm	Approx. weight ³	: 78.9 kg
Locked rotor torque	: 220 %		
Breakdown torque	: 290 %		
Insulation class	: F		
Service factor	: 1.25		
Moment of inertia (J)	: 0.0268 kgm ²		
Design	: B		

Output	50%	75%	100%	Foundation loads	
Efficiency (%)	89.5	90.2	90.2	Max. traction	: 70 kgf
Power Factor	0.79	0.87	0.90	Max. compression	: 149 kgf

Losses at normative operating points (speed;torque), in percentage of rated output power

P1 (0,9;1,0)	P2 (0,5;1,0)	P3 (0,25;1,0)	P4 (0,9;0,5)	P5 (0,5;0,5)	P6 (0,5;0,25)	P7 (0,25;0,25)
10.7	8.7	7.8	5.2	3.3	2.1	1.3

		<u>Drive end</u>	<u>Non drive end</u>
Bearing type	:	6308 ZZ	6207 ZZ
Sealing	:	V'Ring	V'Ring
Lubrication interval	:	-	-
Lubricant amount	:	-	-
Lubricant type	:	Mobil Polyrex EM	

Notes

This revision replaces and cancel the previous one, which must be eliminated.

- (1) Looking the motor from the shaft end.
- (2) Measured at 1m and with tolerance of +3dB(A).
- (3) Approximate weight subject to changes after manufacturing process.
- (4) At 100% of full load.

These are average values based on tests with sinusoidal power supply, subject to the tolerances stipulated in NEMA MG-1.

Rev.	Changes Summary	Performed	Checked	Date
Performed by		Page Revision 1 / 2		
Checked by				
Date	20/10/2024			

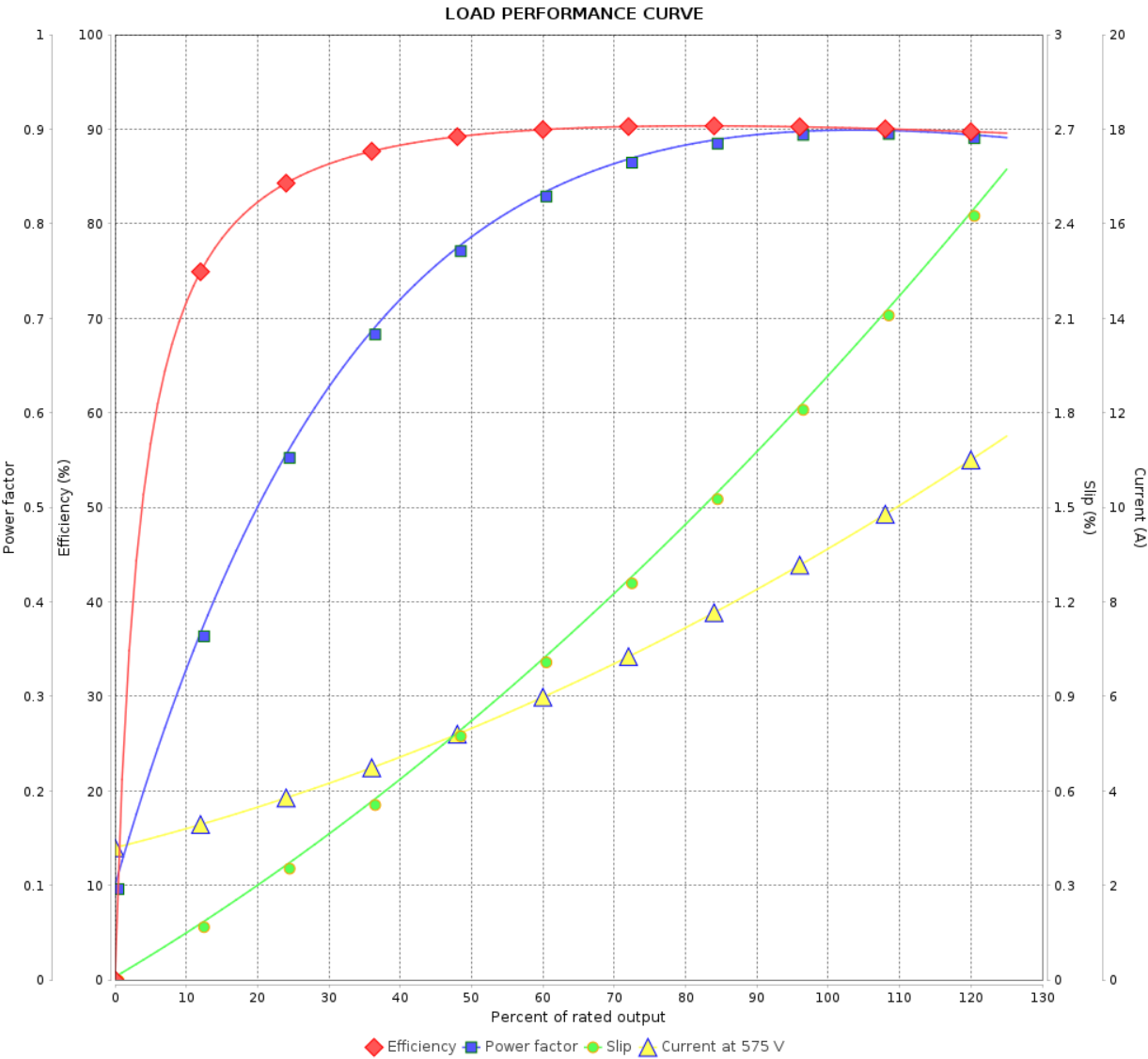
LOAD PERFORMANCE CURVE

Three Phase Induction Motor - Squirrel Cage



Customer :

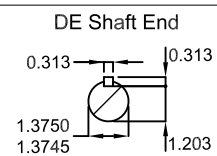
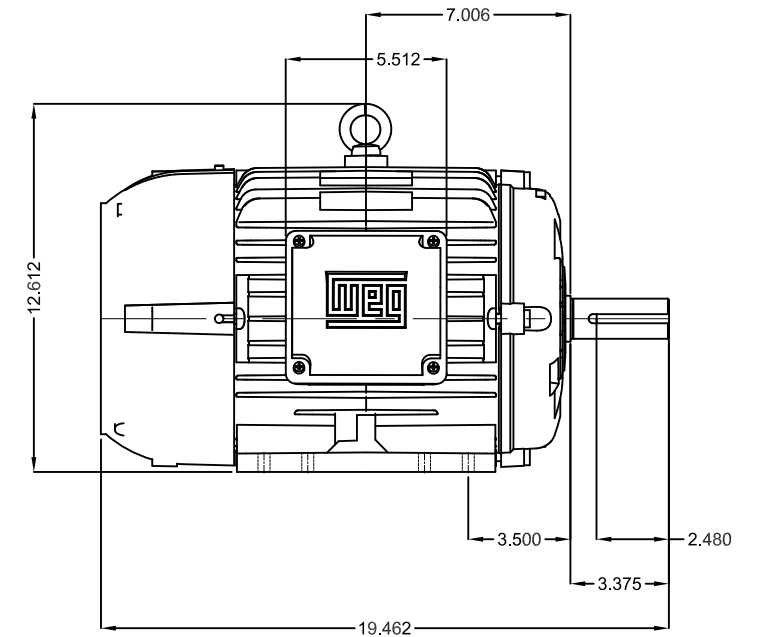
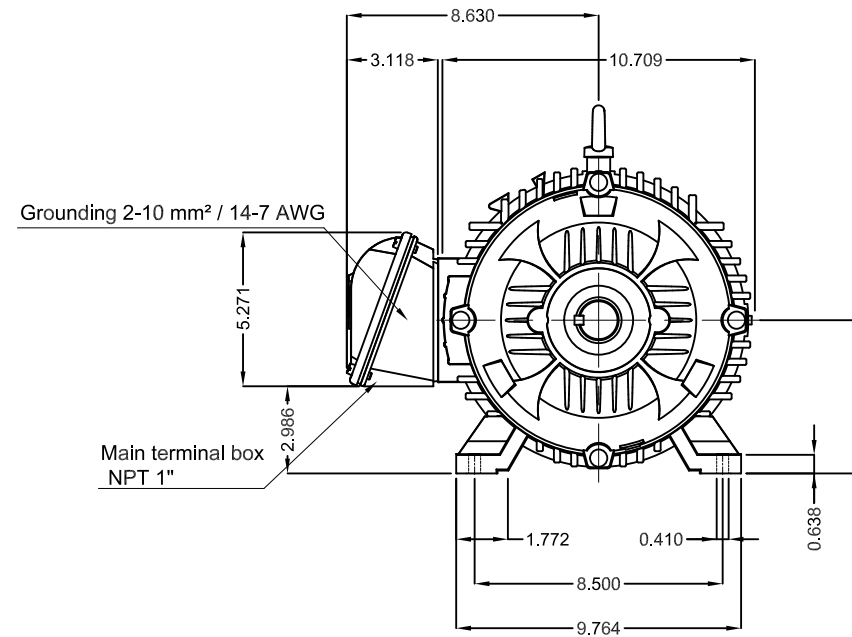
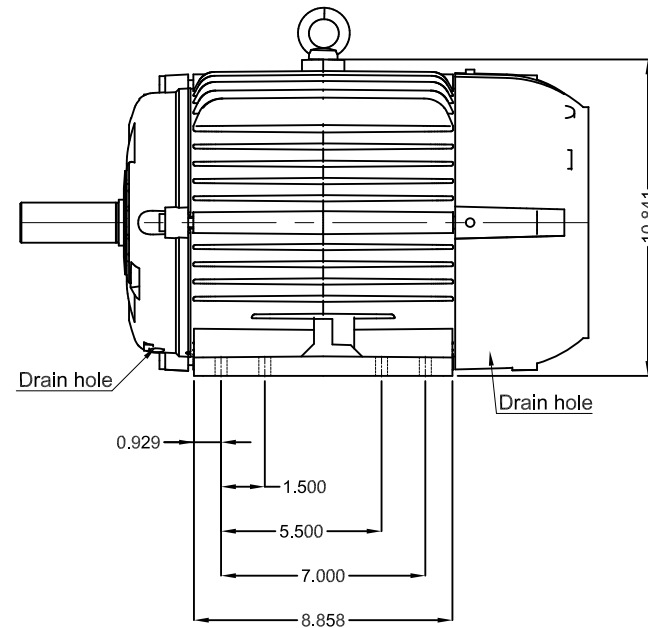
Product line : W22 NEMA Premium Efficiency Three-Phase Product code : 11611342





Performance : 575 V 60 Hz 2P

Rated current	: 9.28 A	Moment of inertia (J)	: 0.0268 kgm ²
LRC	: 7.2	Duty cycle	: Cont.(S1)
Rated torque	: 2.06 kgfm	Insulation class	: F
Locked rotor torque	: 220 %	Service factor	: 1.25
Breakdown torque	: 290 %	Temperature rise	: 80 K
Rated speed	: 3530 rpm	Design	: B

Rev.	Changes Summary		Performed	Checked	Date
Performed by		Page 2 / 2 Revision			
Checked by					
Date	20/10/2024				



Color RAL 5009
Painting plan 207A
Mounting B3R(D)

10 HP 02 Poles 60 Hz										A
							HYBRISUSER			00
ECM	LOC	SUMMARY OF MODIFICATIONS				EXECUTED	CHECKED	RELEASED	DATE	VER
EXECUTED	HYBRISUSER		THREE PH. MOTOR W22 NEMA PREM. EFF. FRAME 213/5T IP55 TEFC					PREVIEW WDD 00		
CHECKED										
RELEASED										
REL. DATE										
						SHEET		/		