

DATA SHEET

Three Phase Induction Motor - Squirrel Cage



Customer :

Product line : ODP High Efficiency Three-Phase Product code : 11997217

Frame	: 284TC	Cooling method	: IC01 - ODP
Insulation class	: F	Mounting	: F-1
Duty cycle	: Cont.(S1)	Rotation ¹	: Both (CW and CCW)
Ambient temperature	: -20°C to +40°C	Starting method	: Direct On Line
Altitude	: 1000 m.a.s.l.	Approx. weight ³	: 0.0 kg
Protection degree	: IP23	Moment of inertia (J)	: 0.1166 kgm ²
Design	: B		

Output [HP]	25	25	25	25
Poles	4	4	4	4
Frequency [Hz]	60	50	50	50
Rated voltage [V]	230/460	380	400	415
Rated current [A]	60.2/30.1	37.4	35.9	34.6
L. R. Amperes [A]	361/181	168	180	187
LRC [A]	6.0x(Code G)	4.5x(Code D)	5.0x(Code E)	5.4x(Code F)
No load current [A]	23.0/11.5	10.8	11.8	12.7
Rated speed [RPM]	1765	1445	1450	1455
Slip [%]	1.94	3.67	3.33	3.00
Rated torque [kgfm]	10.3	12.6	12.5	12.5
Locked rotor torque [%]	220	170	190	210
Breakdown torque [%]	250	180	200	220
Service factor	1.15	1.15	1.15	1.15
Temperature rise	80 K	80 K	80 K	80 K
Locked rotor time	23s (cold) 13s (hot)	21s (cold) 12s (hot)	21s (cold) 12s (hot)	23s (cold) 13s (hot)
Noise level ²	62.0 dB(A)			
Efficiency (%)	25%			
	50%	91.0	88.5	89.5
	75%	91.7	90.2	90.2
	100%	91.7	88.5	89.5
Power Factor	25%			
	50%	0.70	0.75	0.69
	75%	0.79	0.83	0.79
	100%	0.84	0.85	0.83

	Drive end	Non drive end	Foundation loads	
Bearing type	: 6311 Z C3	6211 Z C3	Max. traction	: 392 kgf
Sealing	: Without	Without	Max. compression	: 392 kgf
	Bearing Seal	Bearing Seal		
Lubrication interval	: 20000 h	20000 h		
Lubricant amount	: 18 g	11 g		
Lubricant type	: Mobil Polyrex EM			

Notes

USABLE @208V 66.6A SF 1.15 SFA 76.6A

This revision replaces and cancel the previous one, which must be eliminated.

- (1) Looking the motor from the shaft end.
- (2) Measured at 1m and with tolerance of +3dB(A).
- (3) Approximate weight subject to changes after manufacturing process.
- (4) At 100% of full load.

These are average values based on tests with sinusoidal power supply, subject to the tolerances stipulated in NEMA MG-1.

Rev.	Changes Summary	Performed	Checked	Date
Performed by				
Checked by				
Date	24/08/2025			

Page 1 / 5
Revision

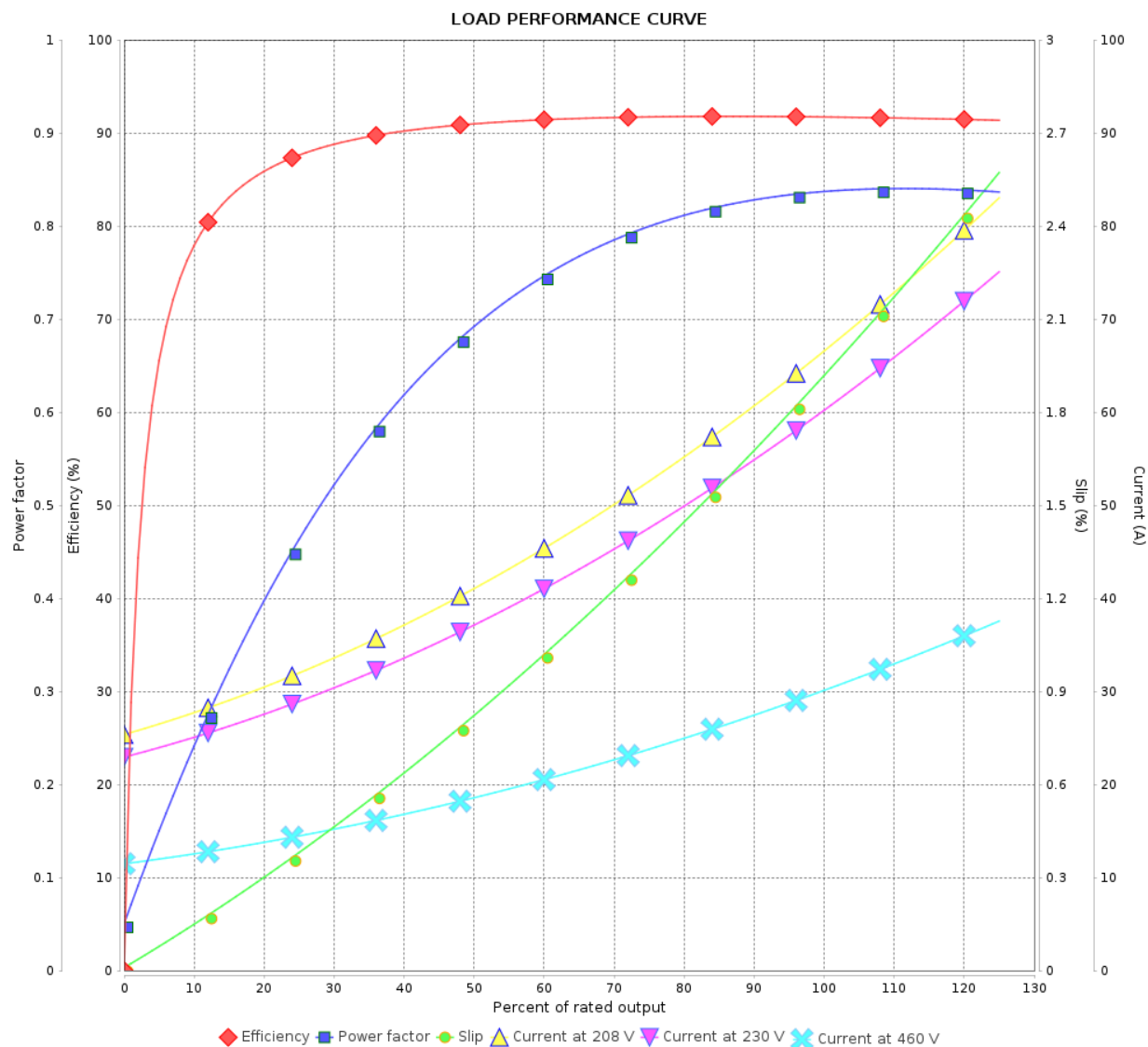
LOAD PERFORMANCE CURVE

Three Phase Induction Motor - Squirrel Cage



Customer :

Product line : ODP High Efficiency Three-Phase Product code : 11997217



Performance : 230/460 V 60 Hz 4P

Rated current : 60.2/30.1 A
LRC : 6.0
Rated torque : 10.3 kgfm
Locked rotor torque : 220 %
Breakdown torque : 250 %
Rated speed : 1765 rpm

Moment of inertia (J) : 0.1166 kgm²
Duty cycle : Cont.(S1)
Insulation class : F
Service factor : 1.15
Temperature rise : 80 K
Design : B

Rev.	Changes Summary		Performed	Checked	Date
Performed by				Page 2 / 5	Revision
Checked by					
Date	24/08/2025				

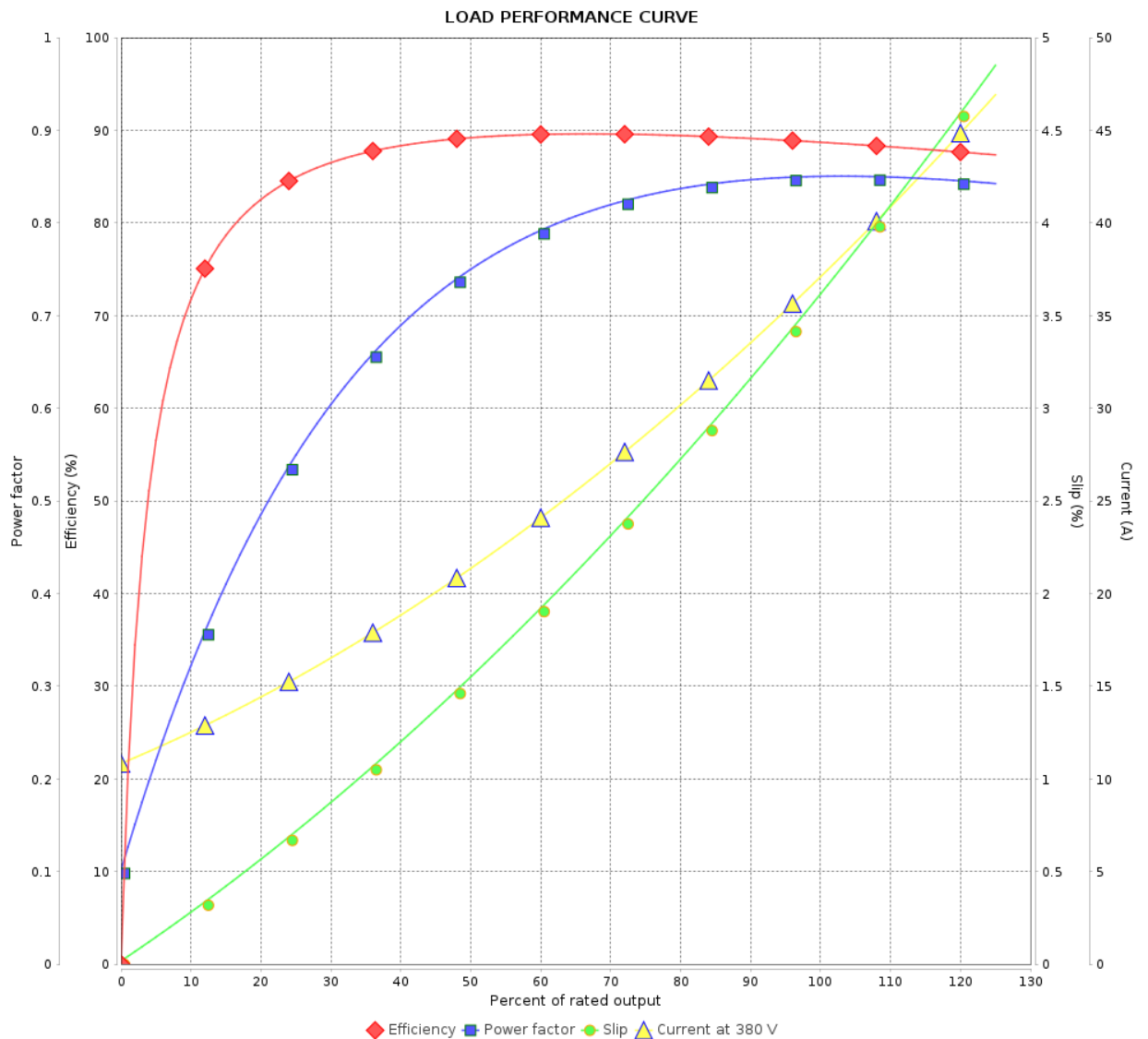
LOAD PERFORMANCE CURVE

Three Phase Induction Motor - Squirrel Cage



Customer :

Product line : ODP High Efficiency Three-Phase Product code : 11997217



Performance : 380 V 50 Hz 4P

Rated current	: 37.4 A	Moment of inertia (J)	: 0.1166 kgm ²
LRC	: 4.5	Duty cycle	: Cont.(S1)
Rated torque	: 12.6 kgfm	Insulation class	: F
Locked rotor torque	: 170 %	Service factor	: 1.15
Breakdown torque	: 180 %	Temperature rise	: 80 K
Rated speed	: 1445 rpm	Design	: B

Rev.	Changes Summary	Performed	Checked	Date
Performed by				
Checked by				
Date	24/08/2025		Page 3 / 5	Revision

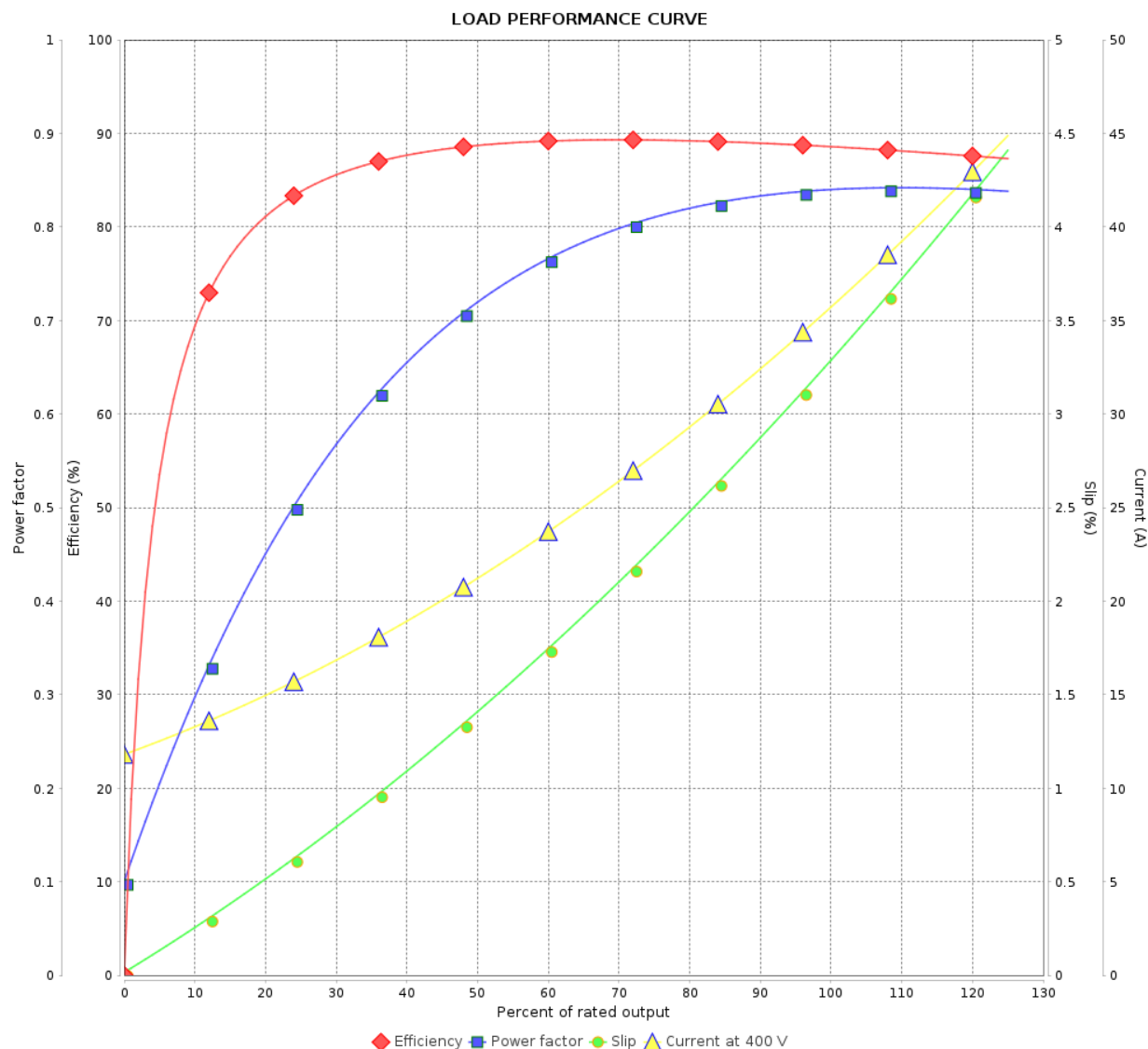
LOAD PERFORMANCE CURVE

Three Phase Induction Motor - Squirrel Cage



Customer :

Product line : ODP High Efficiency Three-Phase Product code : 11997217



Performance : 400 V 50 Hz 4P

Rated current : 35.9 A
LRC : 5.0
Rated torque : 12.5 kgfm
Locked rotor torque : 190 %
Breakdown torque : 200 %
Rated speed : 1450 rpm

Moment of inertia (J) : 0.1166 kgm²
Duty cycle : Cont.(S1)
Insulation class : F
Service factor : 1.15
Temperature rise : 80 K
Design : B

Rev.	Changes Summary		Performed	Checked	Date
Performed by				Page 4 / 5	Revision
Checked by					
Date	24/08/2025				

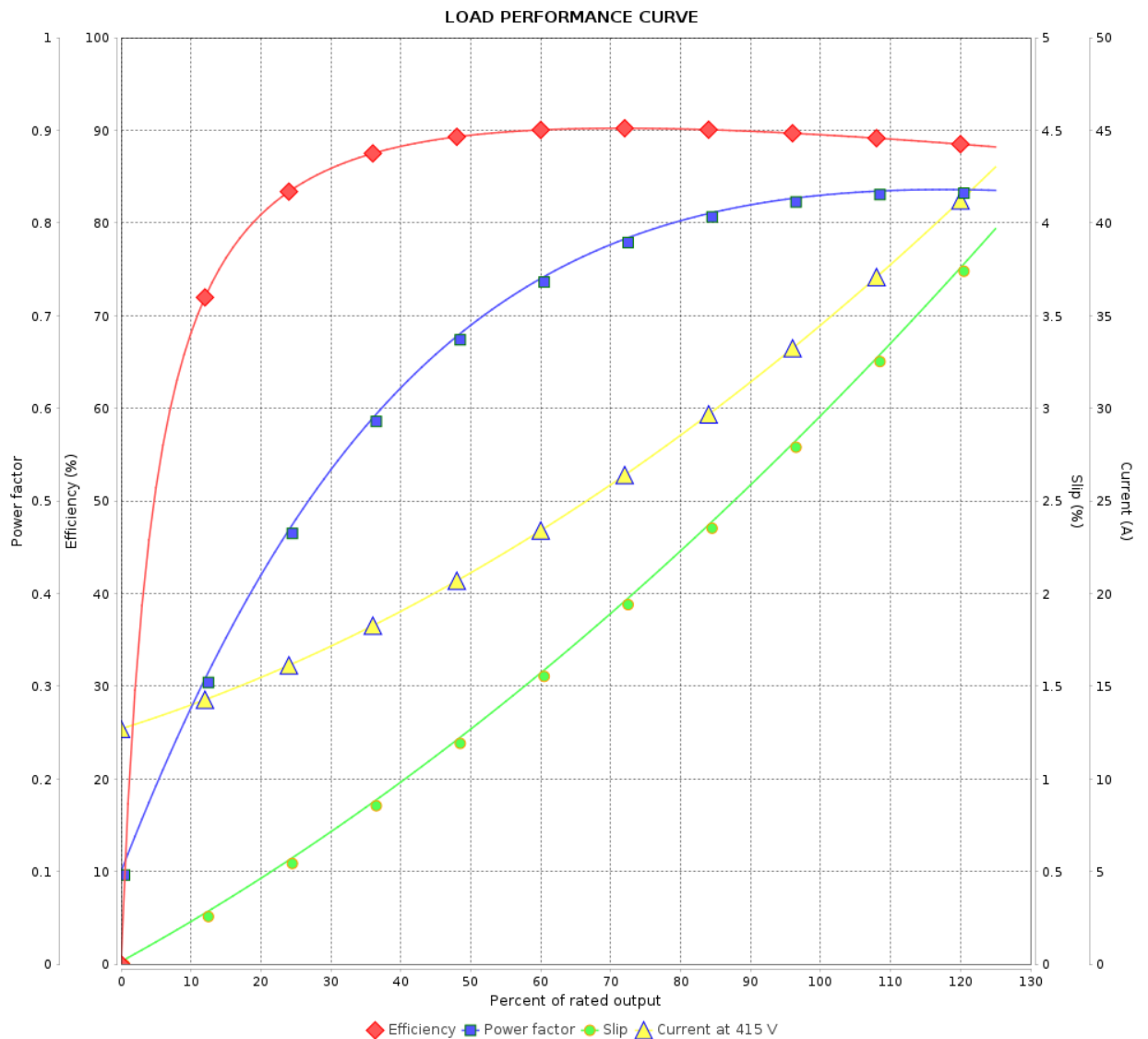
LOAD PERFORMANCE CURVE

Three Phase Induction Motor - Squirrel Cage



Customer :

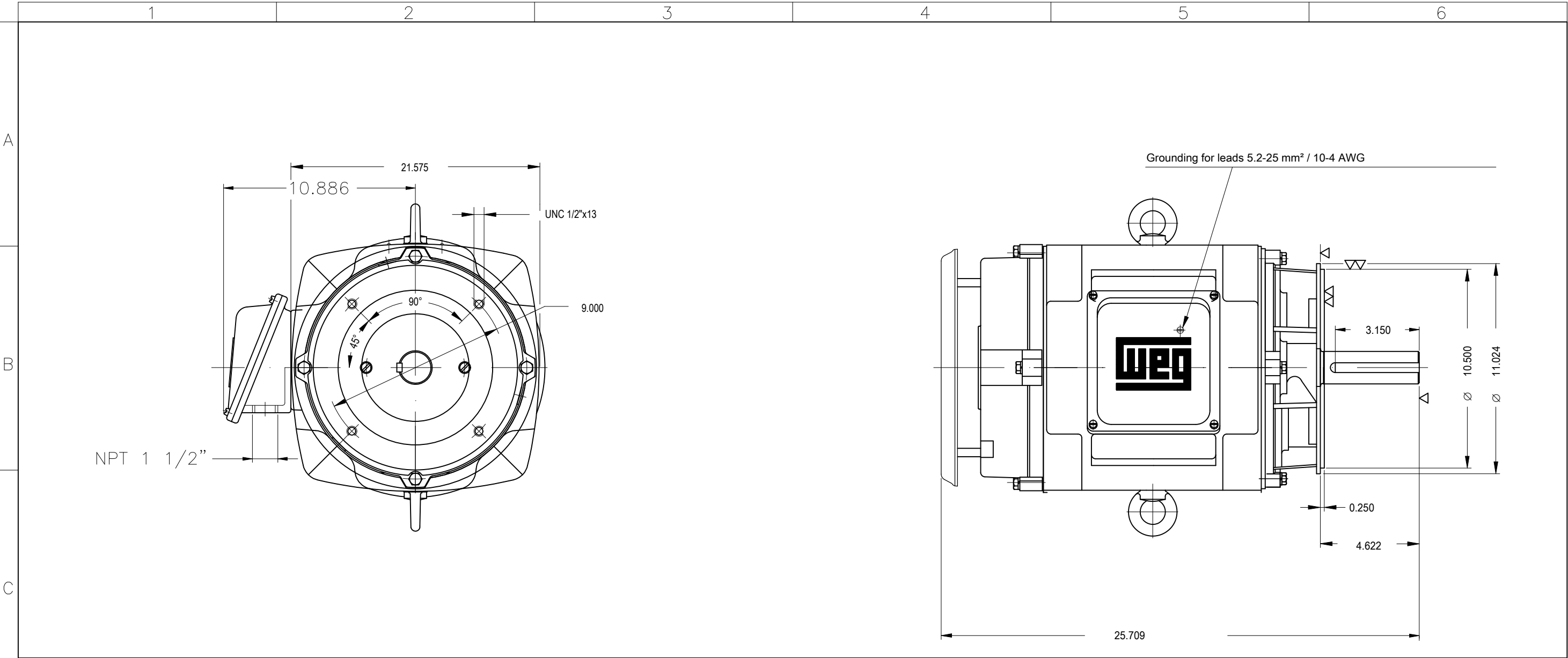
Product line : ODP High Efficiency Three-Phase Product code : 11997217



Performance : 415 V 50 Hz 4P IE1

Rated current	: 34.6 A	Moment of inertia (J)	: 0.1166 kgm ²
LRC	: 5.4	Duty cycle	: Cont.(S1)
Rated torque	: 12.5 kgfm	Insulation class	: F
Locked rotor torque	: 210 %	Service factor	: 1.15
Breakdown torque	: 220 %	Temperature rise	: 80 K
Rated speed	: 1455 rpm	Design	: B

Rev.	Changes Summary	Performed	Checked	Date
Performed by		Page 5 / 5 Revision		
Checked by				
Date	24/08/2025			



				25 HP 04 Poles 60 Hz		A	
				ECM	LOC	SUMMARY OF MODIFICATIONS	HYBRISUSER
				EXECUTED	HYBRISUSER	<div><div></div><div></div></div>	00
				CHECKED			
				RELEASED			
				REL. DATE			
				WMO	Jaragua do Sul	Product Engineering	

Color RAL 5009

Painting plan 203A

Mounting B14R(D)

DE Shaft End

0.500

0.500

1.594

1.8750

1.8740

EXECUTED	HYBRISUSER	<div><div></div><div></div></div>	THREE PH. MOTOR GENERAL HIGH EFF. FRAME 284TC IP23 ODP	PREVIEW		<div><div></div><div></div></div>	
CHECKED				WDD	00		
RELEASED				SHEET 1 / 1			
REL. DATE							