

DATA SHEET



Three Phase Induction Motor - Squirrel Cage

Customer :

Product line : W22 Super Premium Efficiency Three-Phase Product code : 14637591

Frame	: L213/5T	Locked rotor time	: 28s (cold) 16s (hot)
Output	: 10 HP (7.5 kW)	Temperature rise	: 80 K
Poles	: 4	Duty cycle	: Cont.(S1)
Frequency	: 60 Hz	Ambient temperature	: -20°C to +40°C
Rated voltage	: 230/460 V	Altitude	: 1000 m.a.s.l.
Rated current	: 24.0/12.0 A	Protection degree	: IP55
L. R. Amperes	: 202/101 A	Cooling method	: IC411 - TEFC
LRC	: 8.4x(Code K)	Mounting	: F-1
No load current	: 11.0/5.50 A	Rotation ¹	: Both (CW and CCW)
Rated speed	: 1765 rpm	Noise level ²	: 58.0 dB(A)
Slip	: 1.94 %	Starting method	: Direct On Line
Rated torque	: 4.11 kgfm	Approx. weight ³	: 91.0 kg
Locked rotor torque	: 229 %		
Breakdown torque	: 350 %		
Insulation class	: F		
Service factor	: 1.25		
Moment of inertia (J)	: 0.0751 kgm ²		
Design	: A		

Output	25%	50%	75%	100%	Foundation loads	
Efficiency (%)	0.000	91.7	92.4	93.0	Max. traction	: 221 kgf
Power Factor	0.00	0.66	0.78	0.84	Max. compression	: 312 kgf

	Drive end	Non drive end
Bearing type	: 6308 ZZ	6207 ZZ
Sealing	: V'Ring	V'Ring
Lubrication interval	: 0 h	0 h
Lubricant amount	: 0 g	0 g
Lubricant type	: Mobil Polyrex EM	

Notes

This revision replaces and cancel the previous one, which must be eliminated.

- (1) Looking the motor from the shaft end.
- (2) Measured at 1m and with tolerance of +3dB(A).
- (3) Approximate weight subject to changes after manufacturing process.
- (4) At 100% of full load.

These are average values based on tests with sinusoidal power supply, subject to the tolerances stipulated in NEMA MG-1.

Rev.	Changes Summary	Performed	Checked	Date
Performed by		Page		Revision
Checked by		1 / 2		
Date	20/10/2024			

LOAD PERFORMANCE CURVE

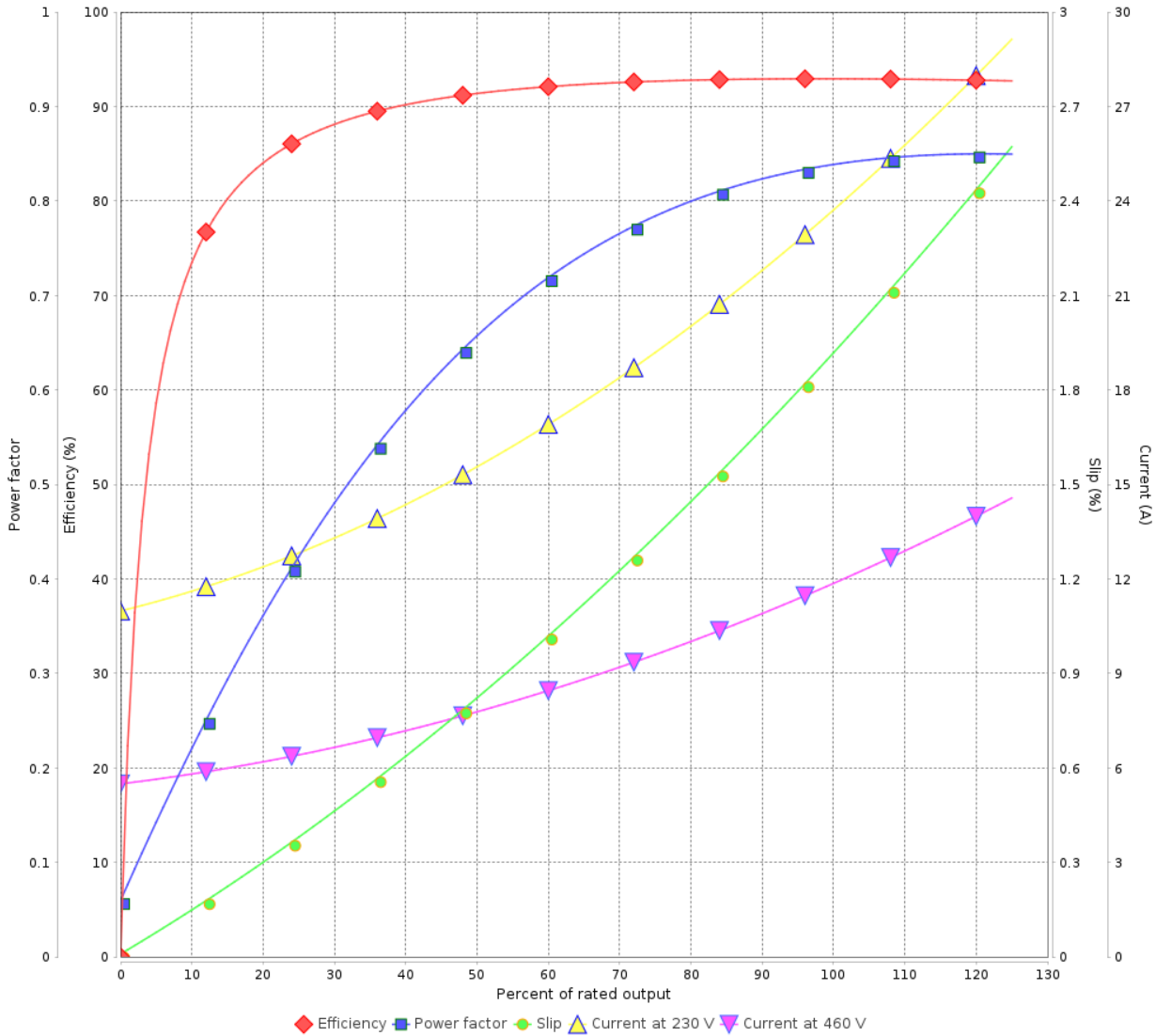
Three Phase Induction Motor - Squirrel Cage



Customer :

Product line : W22 Super Premium Efficiency Three-Phase Product code : 14637591

LOAD PERFORMANCE CURVE

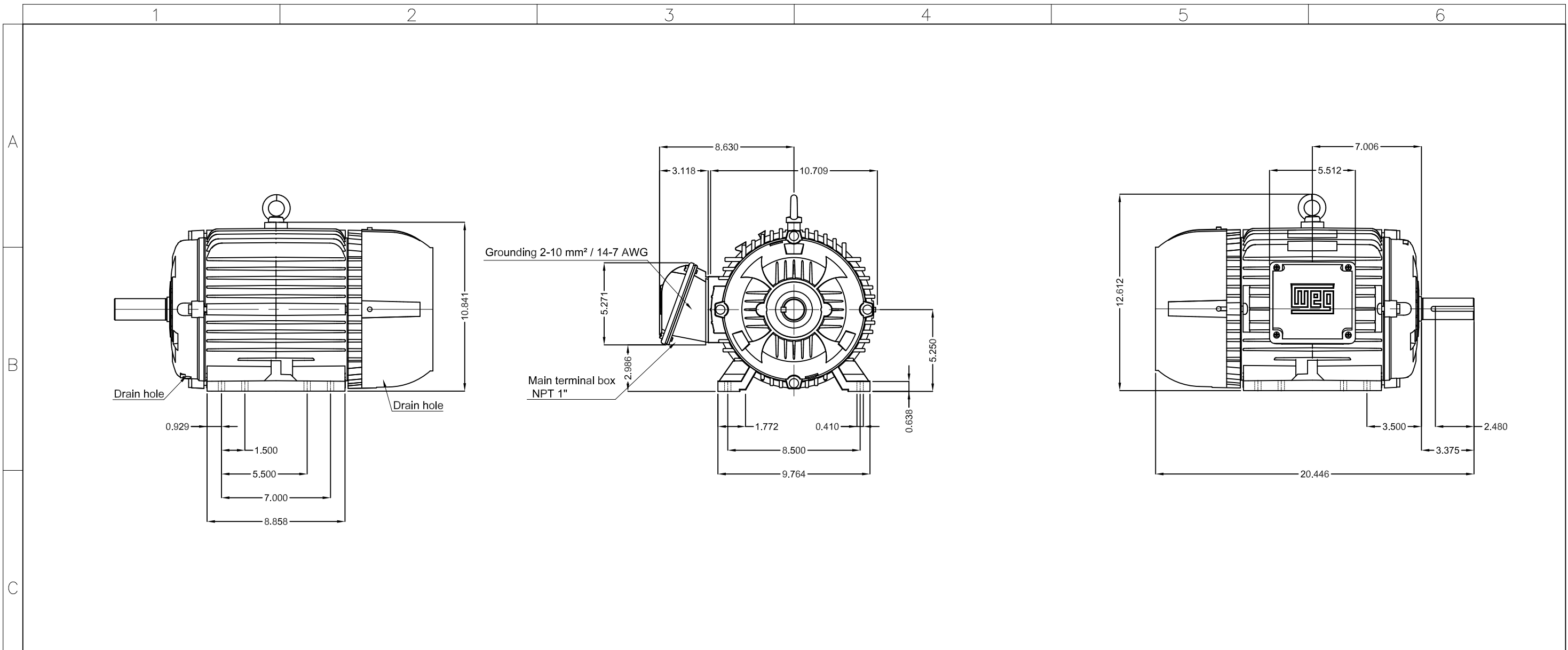


Performance : 230/460 V 60 Hz 4P

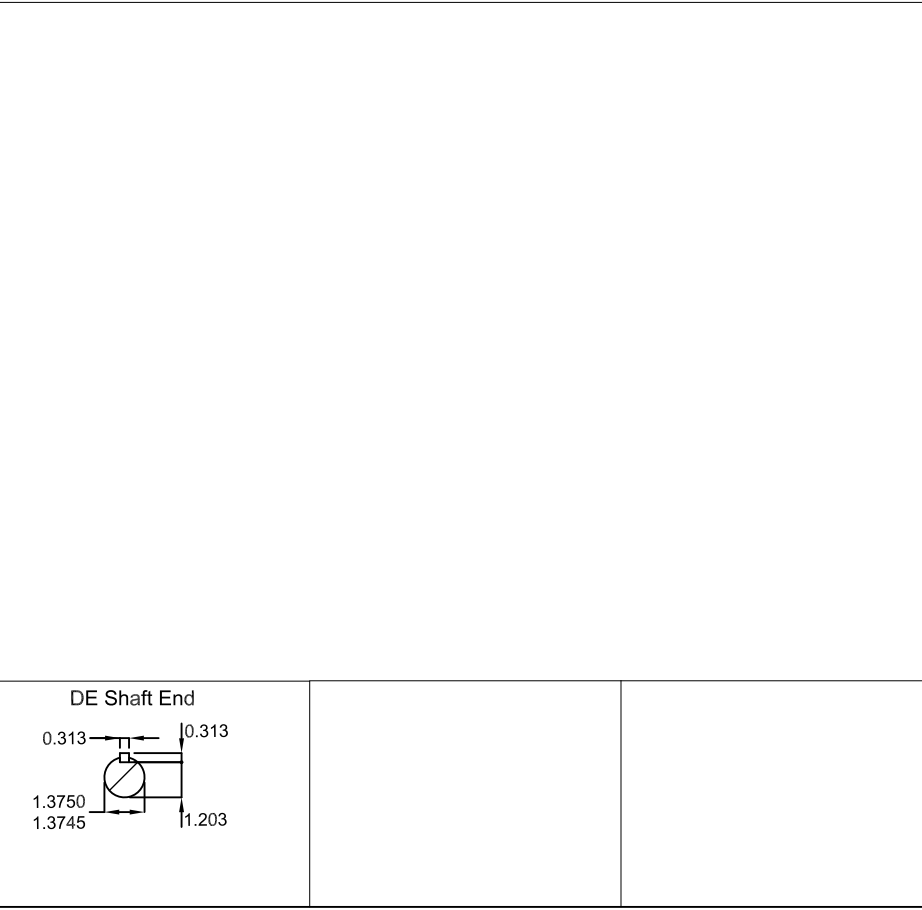
Rated current : 24.0/12.0 A
 LRC : 8.4
 Rated torque : 4.11 kgfm
 Locked rotor torque : 229 %
 Breakdown torque : 350 %
 Rated speed : 1765 rpm

Moment of inertia (J) : 0.0751 kgm²
 Duty cycle : Cont.(S1)
 Insulation class : F
 Service factor : 1.25
 Temperature rise : 80 K
 Design : A

Rev.	Changes Summary	Performed	Checked	Date
Performed by			Page	Revision
Checked by				
Date				



Color RAL 5009
 Painting plan 207A
 Mounting NEMA F-1
 Mounting B3R(D)



10 HP 04 Poles 60 Hz										A	
HYBRISUSER										00	
ECM	LOC	SUMMARY OF MODIFICATIONS					EXECUTED	CHECKED	RELEASED	DATE	VER
EXECUTED	HYBRISUSER	THREE PH. MOTOR W22 SUPER PREM. EFF.					PREVIEW		WDD 00		
CHECKED		FRAME L213/5T IP55 TEFC					SHEET		/		
RELEASED											
REL. DATE											

Dimensions in inches

A3

