

DATA SHEET

Three Phase Induction Motor - Squirrel Cage



Customer :

Product line : ODP High Efficiency Three-Phase Product code : 11996630

Frame	: 254TC	Locked rotor time	: 18s (cold) 10s (hot)
Output	: 20 HP (15 kW)	Temperature rise	: 105 K
Poles	: 2	Duty cycle	: Cont.(S1)
Frequency	: 60 Hz	Ambient temperature	: -20°C to +40°C
Rated voltage	: 575 V	Altitude	: 1000 m.a.s.l.
Rated current	: 19.4 A	Protection degree	: IP23
L. R. Amperes	: 113 A	Cooling method	: IC01 - ODP
LRC	: 5.8x(Code G)	Mounting	: F-1
No load current	: 6.56 A	Rotation ¹	: Both (CW and CCW)
Rated speed	: 3525 rpm	Noise level ²	: 66.0 dB(A)
Slip	: 2.08 %	Starting method	: Direct On Line
Rated torque	: 4.12 kgfm	Approx. weight ³	: 92.8 kg
Locked rotor torque	: 160 %		
Breakdown torque	: 250 %		
Insulation class	: F		
Service factor	: 1.15		
Moment of inertia (J)	: 0.0338 kgm ²		
Design	: B		

Output	50%	75%	100%	Foundation loads	
Efficiency (%)	89.5	90.2	90.2	Max. traction	: 115 kgf
Power Factor	0.74	0.83	0.86	Max. compression	: 208 kgf

		<u>Drive end</u>	<u>Non drive end</u>
Bearing type	:	6309 Z C3	6209 Z C3
Sealing	:	Without Bearing Seal	Without Bearing Seal
Lubrication interval	:	20000 h	20000 h
Lubricant amount	:	13 g	9 g
Lubricant type	:	Mobil Polyrex EM	

Notes

This revision replaces and cancel the previous one, which must be eliminated.

- (1) Looking the motor from the shaft end.
- (2) Measured at 1m and with tolerance of +3dB(A).
- (3) Approximate weight subject to changes after manufacturing process.
- (4) At 100% of full load.

These are average values based on tests with sinusoidal power supply, subject to the tolerances stipulated in NEMA MG-1.

Rev.	Changes Summary	Performed	Checked	Date
Performed by		Page 1 / 2 Revision		
Checked by				
Date	24/08/2025			

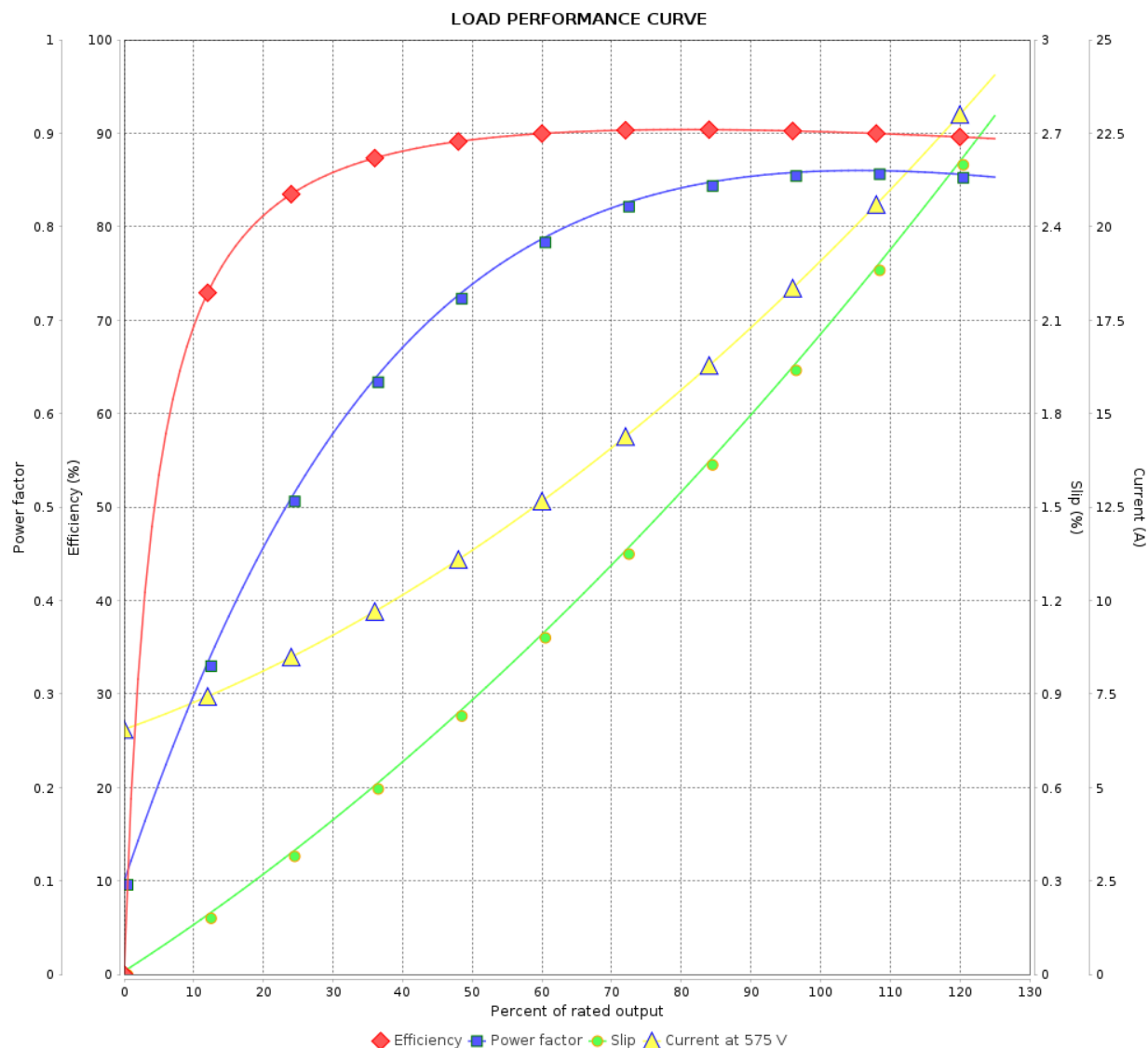
LOAD PERFORMANCE CURVE

Three Phase Induction Motor - Squirrel Cage



Customer :

Product line : ODP High Efficiency Three-Phase Product code : 11996630

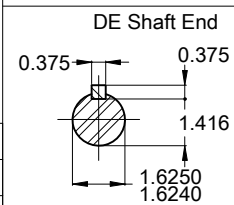
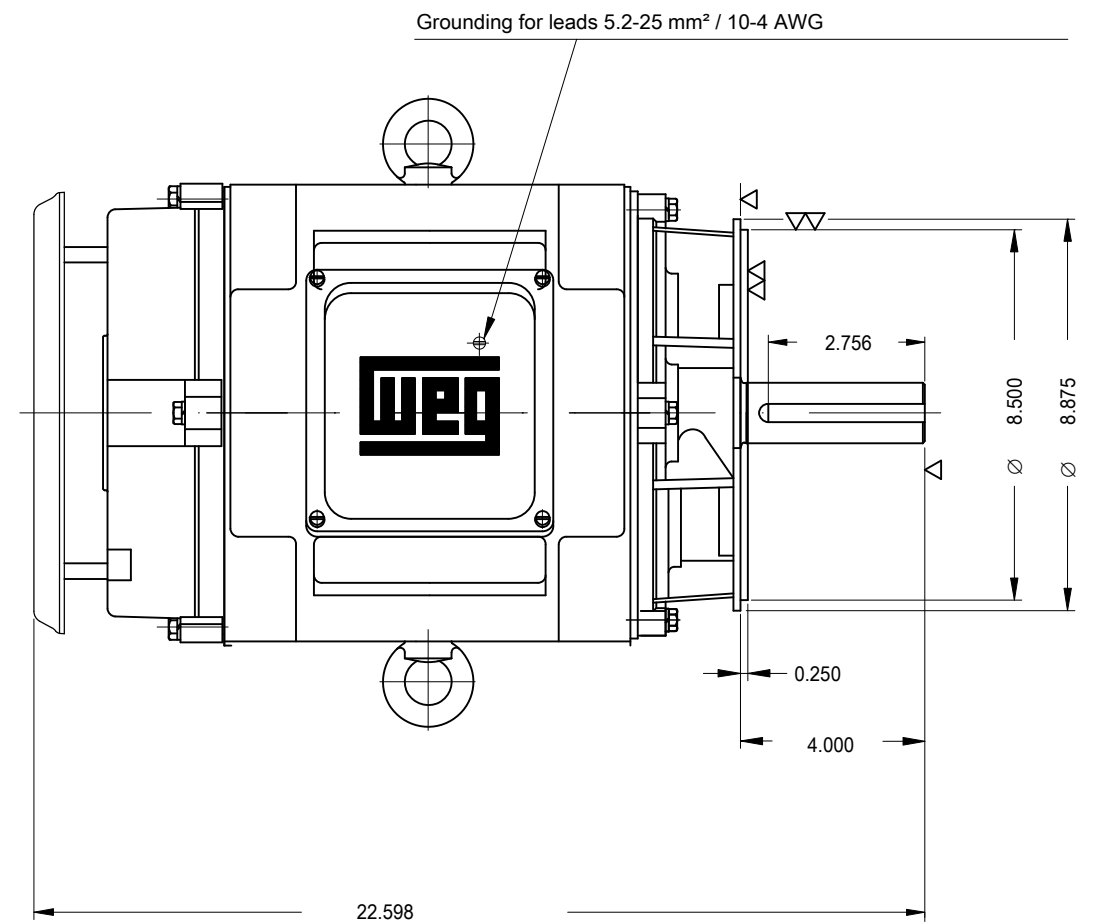
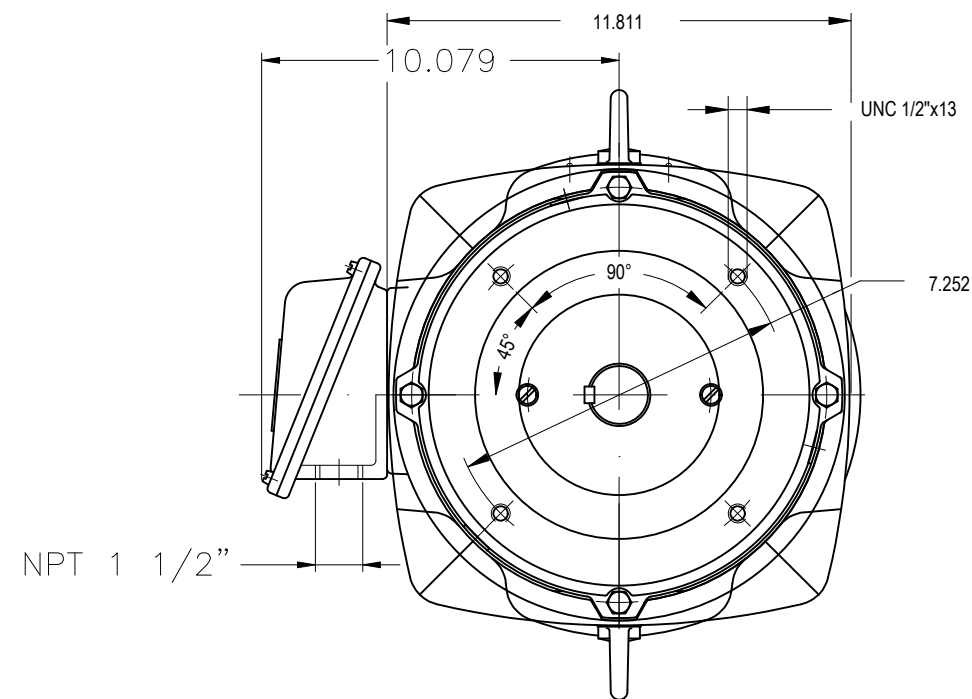


Performance : 575 V 60 Hz 2P



Rated current : 19.4 A
LRC : 5.8
Rated torque : 4.12 kgfm
Locked rotor torque : 160 %
Breakdown torque : 250 %
Rated speed : 3525 rpm

Moment of inertia (J) : 0.0338 kgm²
Duty cycle : Cont.(S1)
Insulation class : F
Service factor : 1.15
Temperature rise : 105 K
Design : B

Rev.	Changes Summary		Performed	Checked	Date
Performed by				Page	Revision
Checked by				2 / 2	
Date					



Color RAL 5009
Painting plan 203A
Mounting B14R(D)

20 HP 02 Poles 60 Hz										A	
							HYBRISUSER				00
ECM	LOC	SUMMARY OF MODIFICATIONS					EXECUTED	CHECKED	RELEASED	DATE	VER
EXECUTED	HYBRISUSER		THREE PH. MOTOR GENERAL HIGH EFF. FRAME 254TC IP23 ODP					PREVIEW			
CHECKED								WDD 00			
RELEASED											
REL. DATE		WMO	Jaragua do Sul				Product Engineering	SHEET	1 / 1		